

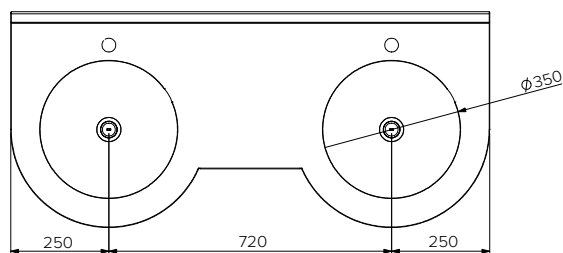
Vanity Bench Secure Round - Access Compliant

Model: SPPL.WB.VB.DA.x.yyyy

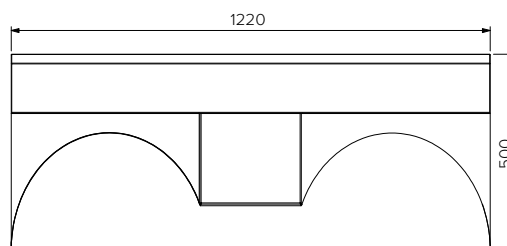
SPPL = Stoddart Plumbing Product
 WB = Wash Basin
 VB = Vanity Bench
 DA = Disabled Access
 x = No. of bowls (refer to table below)
 yyyy = Nominated Length
 eg.: for specification and ordering quote
 Code: SPPL.WB.VB.DA.2.1800

Features and Benefits:

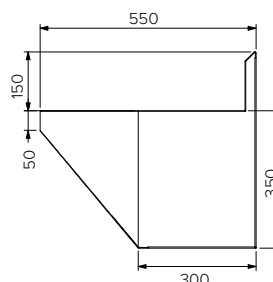
- Designed for access bathrooms in public amenities where vandalism can be a costly problem
- Semicircular shroud with rolled front edges provide user safety
- Vandal resistant, fully welded construction
- Radius front edge minimises risk of user injury
- Designed for access compliance
- All optional tapware are WELS and Watermark approved
- 316 grade variation is available as an optional extra



Plan View



Front View



End View

Specifications:

Construction: Fully welded 2mm thick, 304 grade stainless steel construction, no.4 satin finish

Water Connection: 15mm (1/2" BSP) with water pressure to suit selected tap (dependant on tapware or plumber)

Waste Connection: 40mm PVC waste supplied (trap by others)

Unit Fixing: The unit is supplied with a wall mounting brackets. Recommended fixing height from basin top to finished floor level is 800 - 830mm

Model No.	L x D x H (mm)	No. of Basins
SPPL.WB.VB.DA.2.1220	1220 x 550 x 500	2
SPPL.WB.VB.DA.3.2400	2400 x 550 x 500	3
Custom options available		



Proudly Manufactured in Australia

Due to continuous product research and development, the information contained herein is subject to change without notice.

Revision: B - 16/05/2023

www.stoddart.com.au
 www.stoddart.co.nz