

## TOILETS

### Toilet Pan - Long Drop

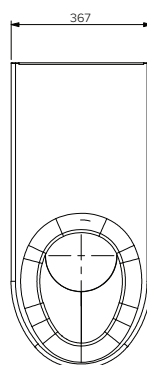
#### Model: SPPL.TP.3.LD

SPPL = Stoddart Plumbing Product  
 TP = Toilet Pan  
 3 = Type 3  
 LD = Long Drop  
 xx = XT = 250mm Long Extension  
 eg.: for specification and ordering quote  
 Code: SPPL.TP.3.LD

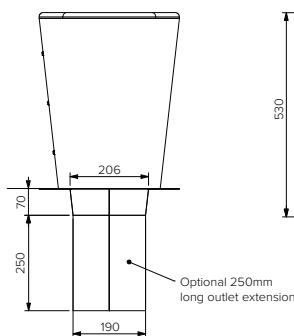


#### Features and Benefits:

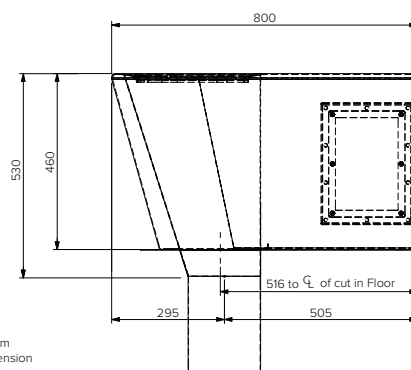
- Standard unit has 2mm stainless steel shroud and formed seat for superior hygiene and strength
- Optional 316 grade stainless steel suitable for highly corrosive and coastal environments
- Base flange allows for easy fastening into place on most floor surfaces
- Plumbing and fixing points are concealed for security and vandal resistance with access to plumbing via side access panel
- Seat has smooth hydraulically formed radius to both outer and inner edges for safety and comfort and has a self draining seat surface for improved hygiene
- Supplied as access compliant height and length to comply with AS1428



Plan View



Front View



End View

#### Specifications:

Construction: Toilet bowl – 304 bright stainless steel. Seat, body and shroud – 2mm 304 stainless steel no.4 satin finish.

Unit Fixing: Designed to be fixed to the rear wall and floor internally or fastened to the floor externally through the base

| Model No.       | L x D x H (mm)  |
|-----------------|-----------------|
| SPPL.TP.3.LD    | 367 x 800 x 530 |
| SPPL.TP.3.LD.XT | 367 x 800 x 780 |

#### Sold Separately

Toilet Seat Options:



CMPL.0814



CMPL.0915



CMPL.1005



Due to continuous product research and development, the information contained herein is subject to change without notice.

Revision: B3 - 16/06/2023

[www.stoddart.com.au](http://www.stoddart.com.au)

[www.stoddart.co.nz](http://www.stoddart.co.nz)



Proudly Manufactured in Australia