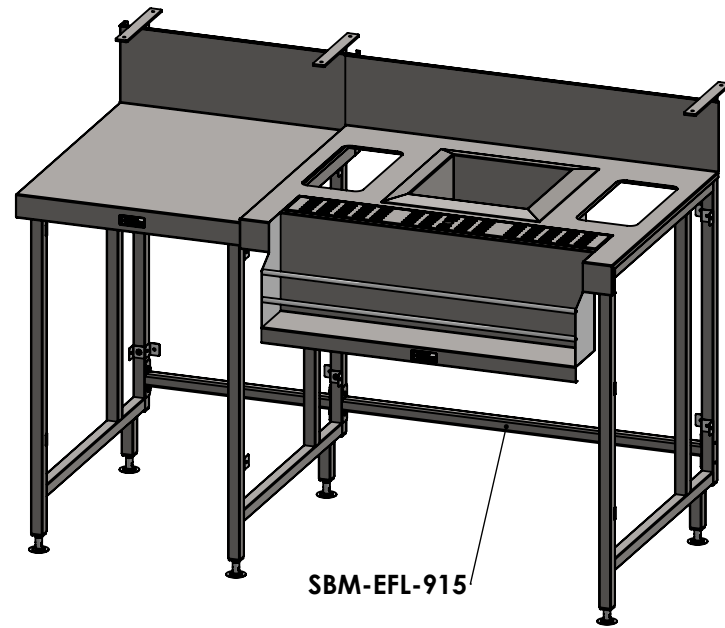
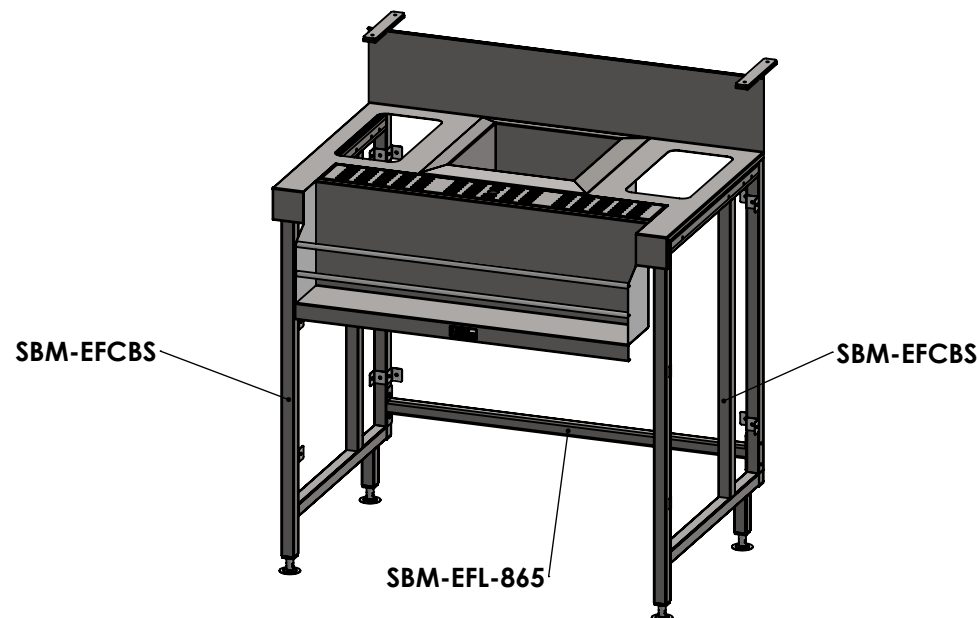


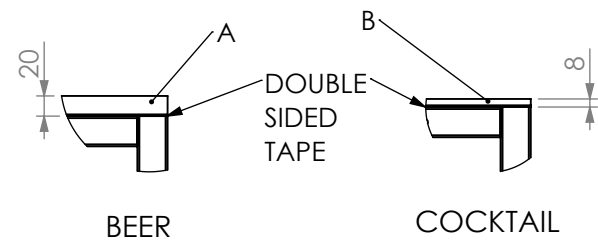
SBM-EFL-1265



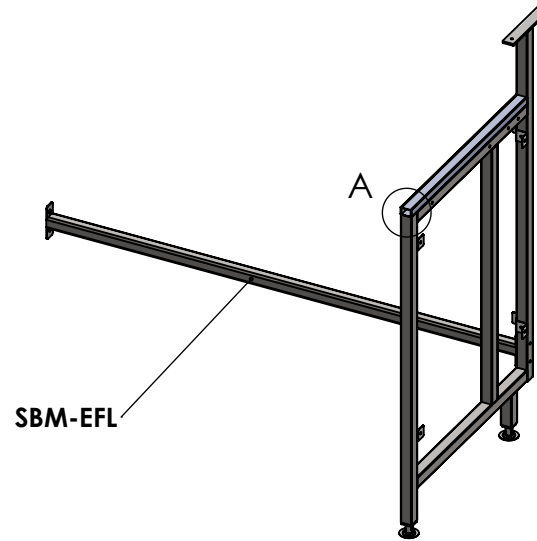
SBM-EFL-915



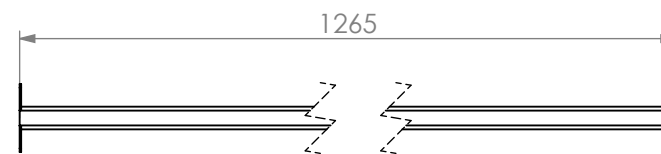
SBM-EFL-865



DETAIL A

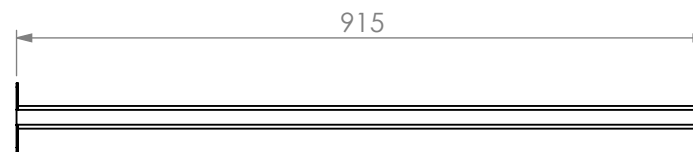


SBM-EFL



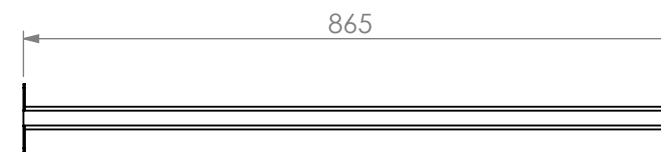
SBM-EFL-1265

END FRAME LINKER - FOR 1300mm BEER STATION



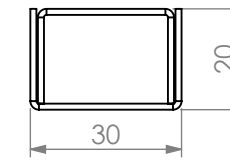
SBM-EFL-915

END FRAME LINKER - FOR 950mm BEER + COCKTAIL STATION

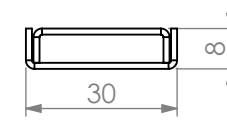


SBM-EFL-865

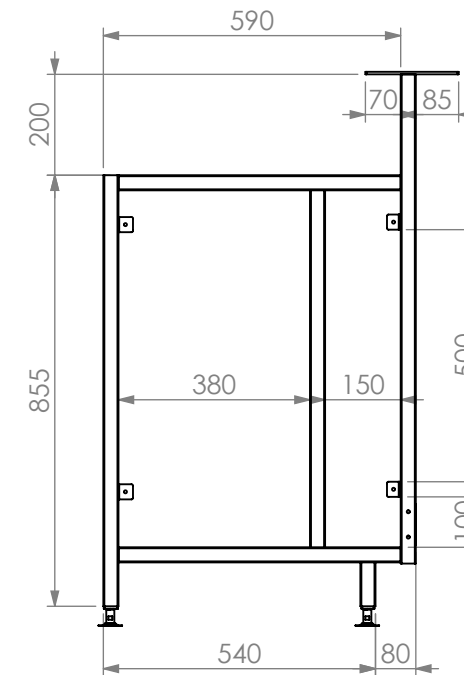
END FRAME LINKER - FOR 950mm BEER + COCKTAIL STATION FREESTANDING



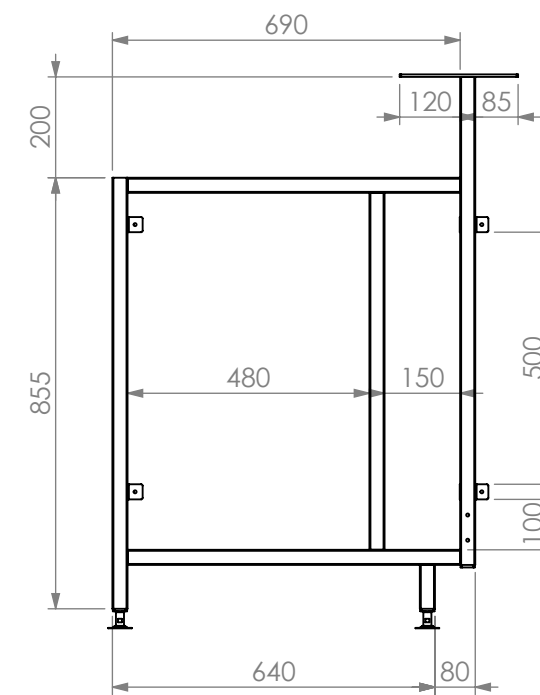
A- PACKER BEER STATION



B - PACKER COCKTAIL STATION



SBM-EFCBS-600



SBM-EFCBS-700



Modular Bar Solutions

COPYRIGHT © 2024

This drawing is the property of CI GROUP PTY LTD. Tradings as SIMPLY BARS and It may not be copied, reproduced or modified in whole or in part without prior written permission of CI GROUP PTY LTD. SIMPLY BARS reserves the right to change specification and design without notice.

SBM-EFCBS
END FRAME COCKTAIL BEER STATION

SIZE: A3

SCALE: NTS

CONSTRUCTION NOTES :

1. FRAMES MADE FROM 30mm STAINLESS STEEL SQ TUBE.
2. FEET ARE ADJUSTABLE STAINLESS STEEL DISC SHAPED FEET.
3. PACKER A FOR USE WITH BEER STATION.
4. PACKER B FOR USE WITH COCKTAIL STATION.



FOR ILLUSTRATION ONLY.