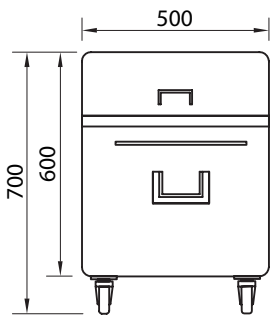


Product Information:

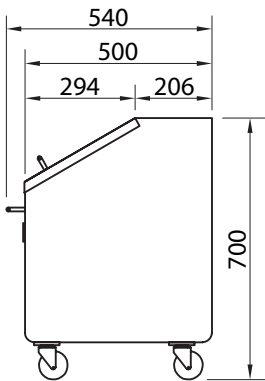
- 1.2mm thick stainless steel construction
- Seamless construction with all radius corners for safety and ease of cleaning
- 100 Litre capacity
- Full width piano hinged bin lid, pivoting at rear
- Stainless steel lift handle fully welded to bin lid
- 75mm diameter swivel castors, with two locking
- Stainless steel tube pull handle welded to front face
- Card slot for itemising contents



General Drawing:



FRONT ELEVATION



SIDE ELEVATION

Specifications

Product Code	W x D x H (mm)	Unit Weight (Kg)	Load Capacity (Kg)
SS26.BIN	500 x 500 x 700	21	20



100%
RECYCLABLE
STAINLESS STEEL



STODDART®