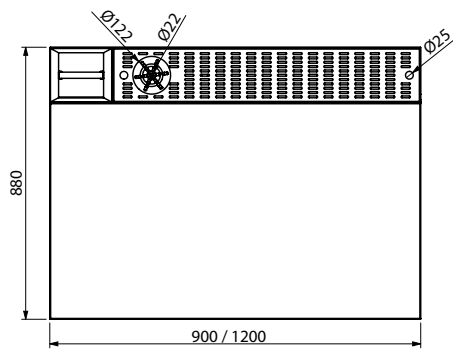
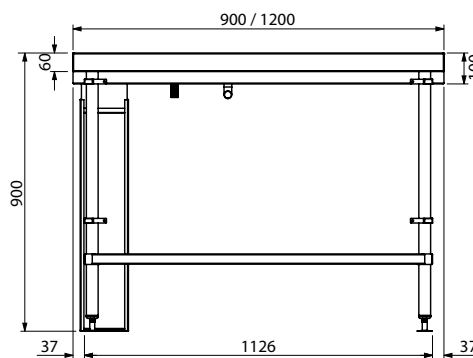


Product Information:

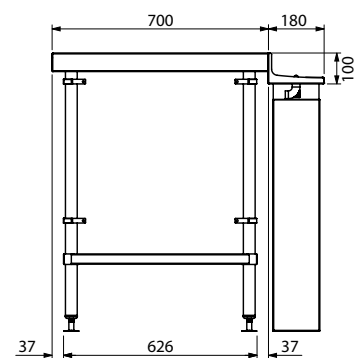
- Work bench supplied with drip tray, coffee knock and bin
- **Watermark Approved** Glass rinser supplied and fitted
- 1.2mm 304 grade stainless steel tops
- 1.2mm adjustable undershelf
- 1.2mm stainless steel reinforcing channel below top
- 38mm, 1.2mm wall thickness round tube legs
- Adjustable stainless steel feet as standard

**General Drawing:**

PLAN



FRONT ELEVATION



SIDE ELEVATION

Specifications

Product Code	W x D x H (mm)	Unit Weight (Kg)	Load Capacity (Kg)
SS42.CS.7.0900	900 x 880 x 900	47	140
SS42.CS.7.1200	1200 x 880 x 900	57	140