

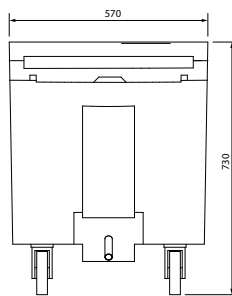
Product Information

- Standing at just 730mm high, makes this caddy ideal for fitting under standard prep tables and countertops.
- Built with double-wall, high-density polyethylene, this unit is impact-resistant and won't dent, crack, bubble, chip, or break. It's also easy to clean.
- The thick polyurethane foam insulation ensures ice stays frozen for days, reducing the need for frequent restocking and enabling quick, convenient service.
- The unique slant-top lid slides up and back into a secure position, providing easy access to the ice. Four sturdy thumbscrews keep the top tightly secured during transport and when the lid is slid back.
- Holds up to 45.5kg of ice.
- A durable nylon front latch keeps the lid in place during transport, protecting contents and ensuring optimal temperature retention. It's rust-resistant and built to last.
- NSF-listed, no-drip, recessed, threaded faucet with standard hose hookup for quick and convenient draining and cleaning.
- Includes an unbreakable polycarbonate drain shelf, allowing water to drain instantly so ice lasts longer.
- Moulded-in side grips provide controlled handling and manoeuvring, while front and back lift grips offer comfortable lifting on and off transport vehicles.
- Equipped with four 127mm casters for easy manoeuvring across various surfaces, including poolside, campus, or banquet floors. Front swivel casters include locking brakes.
- Model ICS100L: 2 fixed, 2 swivel with brakes.
- No assembly required.
- **12 months parts and labour warranty**

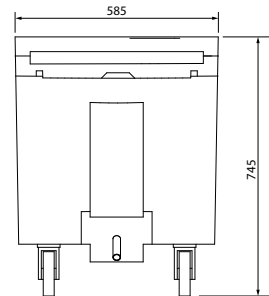


Specifications

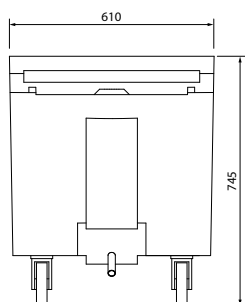
Model	W x D x H (mm)	Weight
ICS100L110	550 x 770 x 730	23kg
ICS125L110	585 x 800 x 745	29kg
ICS175L110	610 x 955 x 745	33kg
ICS200TB110	585 x 865 x 1005	41kg



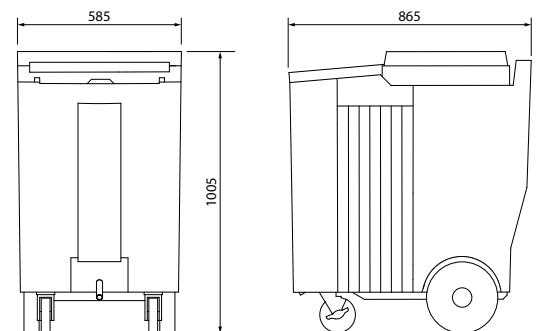
ICS100L110



ICS125L110



ICS175L110



ICS200TB110