

Adande units must positioned on a level surface. Ensure floor is level before installing

1. Position the Adande where it is to be used
2. Check the Adande is level from left to right (unit may need to be rolled forward slightly to place the level)
3. Check the Adande is level from front to back (may need to check level using the side of the unit depending on installation location)

If the Adande unit is not level adjustments can be made to the castors/rollers.

Rollers - Adjustment 0-14mm

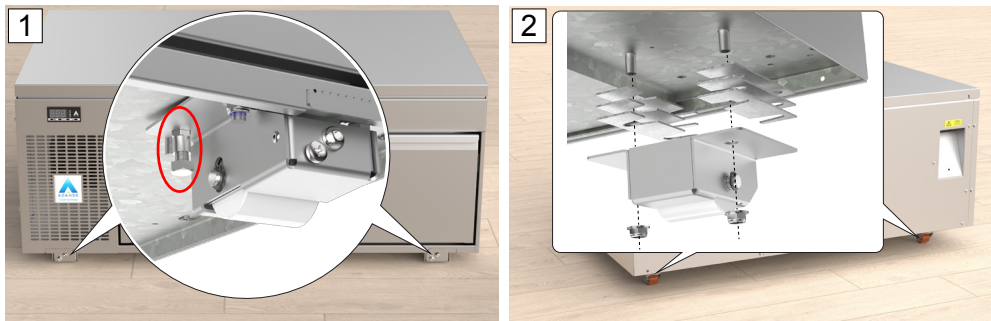
1. Unlock the brakes by with the provided 'Phillips head key' and rotate the locking screw clockwise
2. Adjust the rollers with the provide 'Hex key' by turning the adjustment screw clockwise to increase the height and counter clockwise to decrease the height
3. Lock the brakes by with the provided 'Phillips head key' and rotate the locking screw counter clockwise



Rollers Extra Height Increase

If the Adande rollers have been set to their max height, further height can be achieved by following the below

1. On each of the front rollers use the supplied spanner to wind the two raising bolts in, this will push the roller down from the Adande increasing the height by 6mm
2. If the unit needs to be lifted at the rear, the provided shims will need to be installed between the roller bracket and base of the Adande. A maximum stack of 3 shims (shim thickness 1.5mm) for each side of the roller bracket can be added.



Castors - Adjustment 0-20mm

1. Adjust the castors by turning to the left to increase the height, and turning to the right to decrease the height (front and back castors can be adjusted)
2. Do not wind the castors more then 20mm from the base plate to the sleeve

