

Metro Dual - Wall Mounted

Model: SPPL.DF.MD.WM.xx

SPPL = Stoddart Plumbing Product
 DF = Drinking Fountain
 MD = Metro Dual
 WM = Wall Mounted
 xx = BF - Bottle Filler Position (bottle filler supplied separately)
 eg. for specification and ordering quote
 Code: SPPL.DF.MD.WM.BF

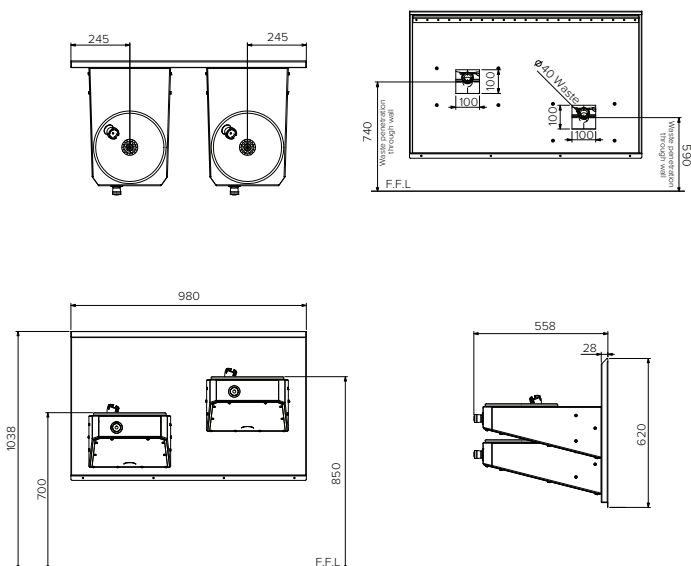
Features and Benefits:

- Ideal for Schools, Shopping malls and outdoor areas
- Easy-Push buttons & valves supply a regulated flow of fresh drinking water while reducing water waste
- Large rounded collection bowl prevents excess water on the ground
- Wall mounted drinking fountain can be easily mounted to most wall surfaces at heights suitable to the application
- Wheelchair accessible as per the requirements advised in AS1428.2
- A Backflow Prevention Device is connected to the appliance for connecting to mains water supply
- A trap must be used for connection to the outlet, when connecting to waste
- Plumbing components used with this product meet or exceed the performance requirements of WMTS-105



Specifications:

- Construction:** 1.5mm 304 grade stainless steel construction, no.4 satin finish. Unit is pre-plumbed with button and bubbler
- Water Connection:** Single 15mm (1/2" BSP) per fountain arm
- Waste Connection:** 40mm waste connection
- Unit Fixing:** The unit is supplied with a wall mounting bracket. Access panels provide secured access to plumbing under each fountain
- Disabled Access:** The preferred fixing height for Disabled Access is 850 - 890mm from the top of unit to finished floor level to allow clear leg space under the unit. This height is also suited for most adults, while 700mm provides access for most children



Model No.	L x D x H (mm)
SPPL.DF.MD.WM	980 x 558 x 620
SPPL.DF.MD.WM.BF	980 x 558 x 620



Due to continuous product research and development, the information contained herein is subject to change without notice.

Revision: C - 13/02/2025 - 04

www.stoddart.com.au

www.stoddart.co.nz