

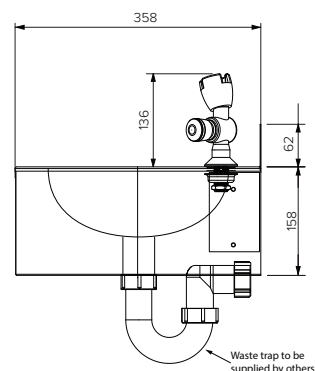
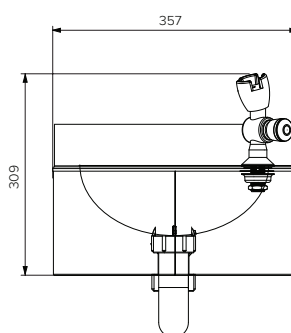
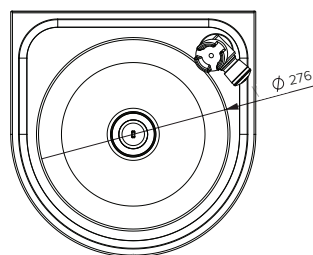
## Round - Wall Mounted

### Model: SPPL.DF.R.WM.xxx.yy

SPPL = Stoddart Plumbing Product  
 DF = Drinking Fountain  
 R = Round  
 WM = Wall Mounted  
 xxx = 300 = 300mm splashback (optional)  
 yy = BF - Bottle Filler Position (bottle filler supplied separately)  
 eg: for specification and ordering quote  
 Code: SPPL.DF.R.WM.300.BF

### Features and Benefits

- Approved design drinking fountain for government schools
- Economical design makes this the affordable solution for schools and institutions
- Easy mount bracket system for quick installation
- No sharp edges ensuring safe use and cleaning
- WELS rated supplied bubbler for easy and efficient water access
- When connecting to a waste, a trap must be used for connection to the outlet
- Plumbing components used with this product meet or exceed the performance requirements of WMTS-105



### Specifications:

Construction: 1.2 304 grade stainless steel construction, no.4 satin finish.  
 Water Connection: Single 15mm (1/2" BSP)  
 Waste Connection: 40mm waste connection  
 Unit Fixing: The unit is supplied with a stainless steel wall mounting bracket with 8mm diameter fix 6mm stainless steel fixings.

Model No.	L x D x H (mm)
SPPL.DF.R.WM	357 x 358 x 309
SPPL.DF.R.WM.BF	357 x 358 x 309
SPPL.DF.R.WM.300	360 x 358 x 458
SPPL.DF.R.WM.300.BF	360 x 358 x 458



Tapware components supplied for this appliance are Watermarked and WELS rated



Due to continuous product research and development, the information contained herein is subject to change without notice.

Revision: A - 13/02/2025 - 03

[www.stoddart.com.au](http://www.stoddart.com.au)

[www.stoddart.co.nz](http://www.stoddart.co.nz)