

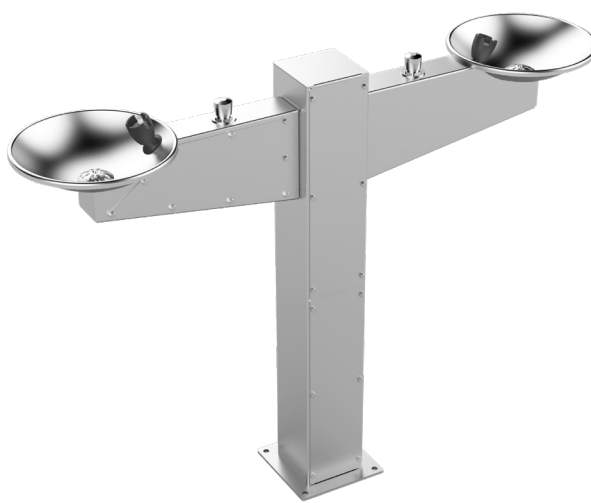
## **Specification, Installation and Operation Manual**

### **Metro - Freestanding Drink Fountain**

Model Family:  
SPPL.DF.M



SPPL.DF.MS.FS



SPPL.DF.MD.FS

A guide on the use, care and maintenance  
of your quality Stoddart product

1.0 Introduction

1.1 Your New Stoddart Product . . . . . 3

1.2 Australia and New Zealand Warranty . . . . . 4

    1.2.1 Warranty Period

    1.2.2 Warranty Registration . . . . . 4

1.3 Recommendations . . . . . 4

1.4 Responsibilities. . . . . 4

2.0 Installation

2.1 Installation . . . . . 5

    2.1.1 Water & Waste Requirements

    2.1.2 Installation . . . . . 6

2.2 Troubleshooting . . . . . 6

3.0 Maintenance

3.1 Spare Parts - Exploded . . . . . 7

    3.1.1 SPPL.DF.MS.FS.SP

    3.1.2 SPPL.DF.MS.SP.DB

3.2 Cleaning Instructions . . . . . 7

### 1.1 Your New Stoddart Product

Thank you for choosing this quality Stoddart product.

All Stoddart products are designed and manufactured to meet the needs of consumers. By caring for and maintaining your new Stoddart product in accordance with these instructions, will provide many years of reliable service.

Stoddart is a wholly Australian owned company, which manufactures and/or distributes a comprehensive range of food service equipment for kitchens, food preparation and presentation. Stoddart products are manufactured and engineered to provide excellent results whilst offering value-for-money, ease-of-use and reliability.

**Carefully read this instruction booklet, as it contains important advice for safe installation, operation and maintenance. Keep this booklet on hand in a safe place for future reference by other operators or users.**

#### Disclaimer

The manufacturer/distributor cannot be held responsible or liable for any injuries or damages of any kind that occur to persons, units or others, due to abuse and misuse of this unit in regards to installation, removal, operation, servicing or maintenance, or lack of conformity with the instructions indicated in this documentation.

All units made by the manufacturer/distributor are delivered assembled, where possible, and ready to install. Any installation, removal, servicing, maintenance and access or removal of any parts, panels or safety barriers that is not permitted, does not comply in accordance to this documentation, or not performed by a **TRAINED AND AUTHORISED SPECIALIST** will result in the **IMMEDIATE LOSS OF THE WARRANTY.**

The manufacturer/distributor cannot be held responsible or liable for any unauthorised modifications or repairs. All modifications or repairs must be approved by the manufacturer/distributor in writing before initiating. All modifications or repairs performed to this unit must be performed at all times by a **TRAINED AND AUTHORISED SPECIALIST.**

**Stoddart design, manufacture & distribute Food Service Equipment (appliances) and Plumbing products exclusively for the commercial market.**

**This unit is not designed nor intended for household or domestic use & must not be used for this purpose.**

Read these instructions carefully and retain for future reference.

- All units **MUST** be installed according to the procedures stated in the installation section of this manual
- In the case of new personnel, training is to be provided before operating the equipment
- **DO NOT** use this unit for any other purpose than its intended use
- Keep fingers out of "pinch point" areas
- **DO NOT** remove any cover panels that may be on the unit (unless directed as per user manual)
- If any fault is detected, refer to troubleshooting
- The manufacturer declines any liability for damages to persons and/or things due to an improper/wrong and/or unreasonable use of the machine



## Warranty & Registration

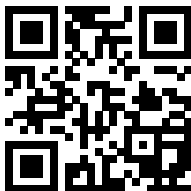
### 1.2 Australia and New Zealand Warranty

#### 1.2.1 Warranty Period

All Stoddart manufactured and distributed products are covered by Stoddart's standard Australia and New Zealand Product Warranty (minimum 12 month on-site parts and labour, terms and conditions apply). Further to this standard warranty, certain products have access to an extended warranty. Full terms, conditions and exclusions can be found using the below Link/QR code.

#### 1.2.2 Warranty Registration

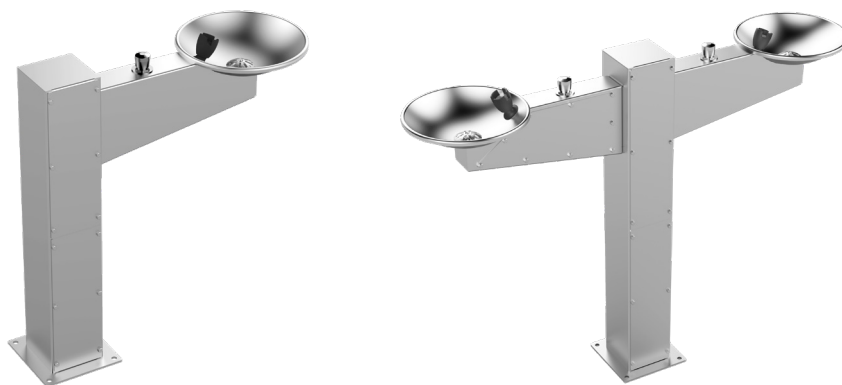
To register your new product, Follow the below Link/QR code.



[www.stoddart.com.au/warranty-information](http://www.stoddart.com.au/warranty-information)

### 1.3 Recommendations

Upon receiving a Stoddart product, inspect immediately for any visible signs of shipping damage and notify the carrier immediately. When removing the product from its packing, be careful not to dent or scratch outer surface. Any concealed damage should be noted and reported immediately to the freight carrier. A claim should be filed with carrier if appropriate.



### 1.4 Responsibilities

Stoddart thoroughly inspect all products that are despatched from our factory.

The Plumber is responsible to ensure that the system is installed in accordance with all specific requirements of local codes and regulations (including AS 3500).

If questions or complications should arise during the installation of a Stoddart product that cannot be solved using the accompanying instructions, please contact our offices or local representatives.

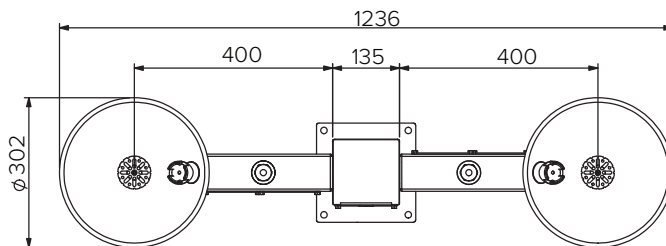
### 2.1 Installation

#### 2.1.1 Water & Waste Requirements

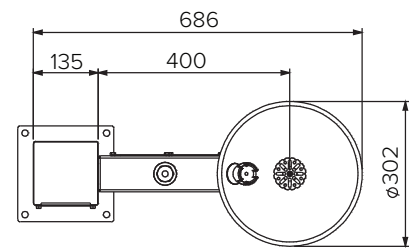
- Flow pressure 300kPa – 500kPa
- Max. static pressure 500 kPa
- 1/2" BSP water supply connection (Isolation valve & Braided hose supplied by others)
- Waste connection is NB40. Trap included

#### 2.1.2 Installation

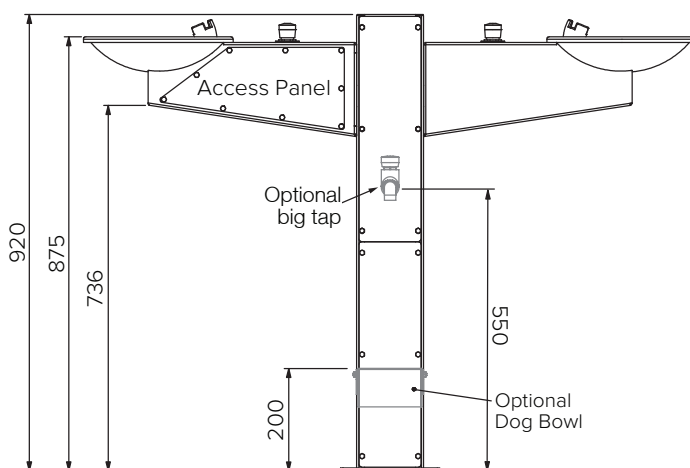
1. Unpack the product and check for damage. Photograph and report any damage immediately.
2. Remove the access panels.
3. Place a template of mounting plate on the mounting surface & mark fixing positions.
4. Ensure the water supply and waste are in the required zone.
5. Flush the water supply to ensure there is no debris in the line.
6. Position the unit & secure the fixings & ensure the unit is installed level.
7. Connect the water supply and waste as required.
8. Test the water flow and drain. Fix any leaks. Adjust the flow valve for correct water stream.
9. Refit the access panels
10. Clean the surfaces.
11. Take a photo of the completed installation for record.



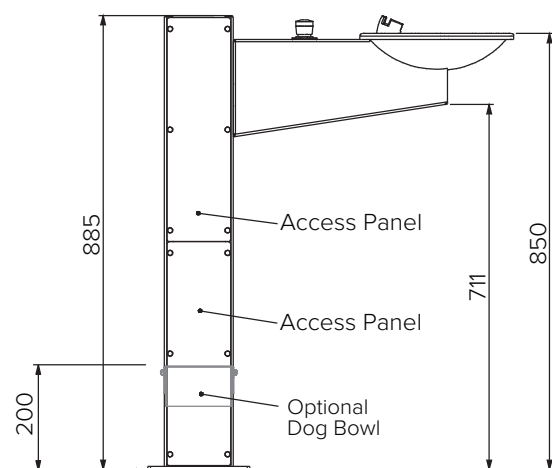
Plan View



Plan View



Front View

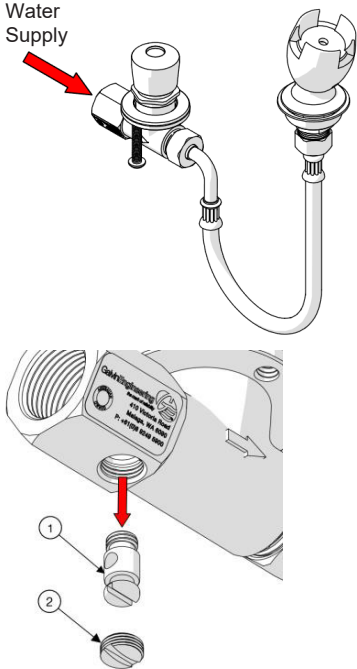


Front View

Due to continuous product research and development,  
the information contained herein is subject to change without notice.

## 2.2 Troubleshooting

PROBLEM	CAUSE	RECTIFICATION
Inconsistent flow	Blocked top assembly	Remove top assembly and clean
Water is not flowing from tap	Water is turned off	Turn on water
	Blocked flow regulating screw	Remove flow regulating screw and clean
Continuous flow	Top assembly loose or internally obstructed or damaged	Remove top assembly, clean with water, and regrease spindle if required
Rate of flow inadequate	The flow regulating screw may not be adjusted correctly	Remove blanking screw and adjust flow regulating screw as described above
Button hard to press	The mains pressure may be too high	Reduce to below 500kPa (70PSI). Regrease spindle if required



The diagram illustrates the installation and adjustment of the drinking tap. The top part shows the 'Water Supply' connection with a red arrow pointing to the inlet. The bottom part shows the 'Flow Regulating Screw' adjustment process, with a red arrow pointing to the screw and a numbered list (1, 2) indicating the steps to remove the blanking screw and adjust the water height.

**TESTING**

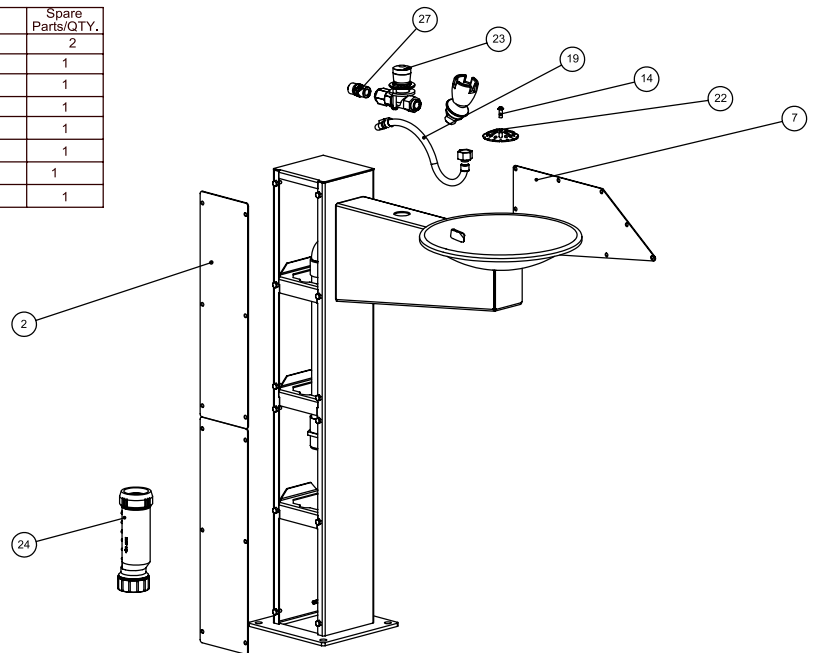
- Once the drinking tap has been installed and tested for leaks, the water height may be adjusted to suit the available pressure.
- To adjust water flow:
  1. Remove the blanking screw
  2. Adjust the water height by turning the regulating screw
  3. Once desired height has been achieved, replace blanking screw.

**NOTE:** The full range from minimum flow to maximum flow is only 1/4 turn

### 3.1 Spare Parts - Exploded

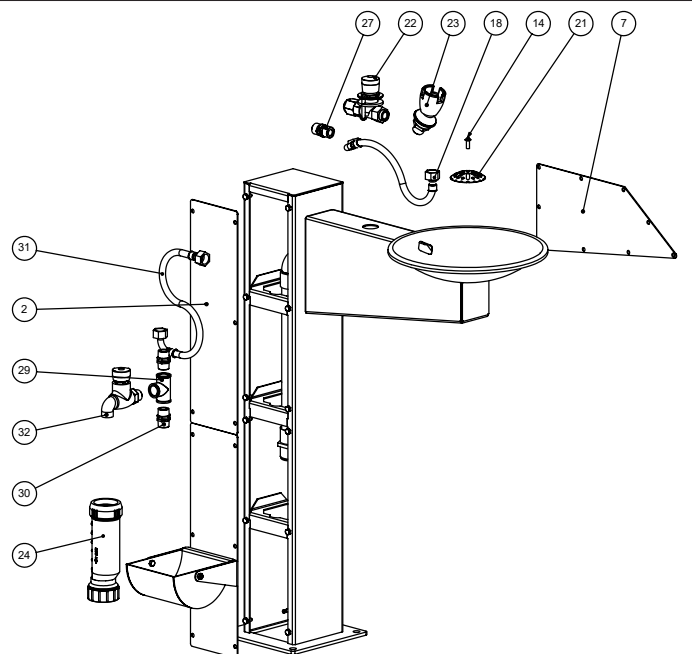
#### 3.1.1 SPPL.DF.MS.FS.SP

ITEM NO.	PART NUMBER	Spare Parts Description	Spare Parts/ QTY.
2	SPPL-DF-MS-FS-SP-p03 A	Post Access Panel	2
7	SPPL-DF-MS-FS-SP-p08 B	Access Panel	1
14	CMFA-0503	Security Screw	1
19	CMPL-0429	Braided Hose	1
22	CMPL-0517	Perforated Waste Cover	1
23	CMPL-0595	Bubbler and Push Button	1
24	CMPL-0634	40mm, Self Sealing Waste Valve	1
27	CMPL-1291 A	Dual-Check Valve 1/2"	1



#### 3.1.2 SPPL.DF.MS.SP.DB

ITEM NO.	PART NUMBER	Spare Parts Description	QTY.
2	SPPL-DF-MS-FS-SP-p03 A	Post Access Panel	2
7	SPPL-DF-MS-FS-SP-p08 B	Access Panel	1
14	CMFA-0503	Security Screw	1
18	CMPL-0429	Braided Hose	1
21	CMPL-0517	Perforated Waste Cover	1
22	CMPL-0595-1	Drink Bubbler & Valve	1
23	CMPL-0595-2	Drink Bubbler & Valve	1
24	CMPL-0634	40mm, Self Sealing Waste Valve	1
27	CMPL-1291 A	Dual-Check Valve 1/2"	1
29	CMPL-0286	Tee; Cast; Brass; 1/2" BSP; Female; 35p	1
30	CMPL-0384	1/2" Hex Nipple	2
31	CMPL-0509	Braided Hose	1
32	CMPL-0615	STD Bib Tap	1



### 3.2 Cleaning Instructions

- All surfaces of the product should be cleaned with mild soap and water or a neutral product
- Carefully rinse away all surplus cleaning product
- **IMPORTANT:** Never use harsh or abrasive cleaners on stainless steel. Do not use chlorinated or bleach water

Due to continuous product research and development,  
the information contained herein is subject to change without notice.

[www.stoddart.com.au](http://www.stoddart.com.au)

[www.stoddart.co.nz](http://www.stoddart.co.nz)

## Australia

Australian Business Number: 16009690251

### Service / Spare Parts

<https://customerservice.stoddart.com.au>

### Sales

Tel: 1300 79 1954

Email: [sales@stoddart.com.au](mailto:sales@stoddart.com.au)

Web: [www.stoddart.com.au](http://www.stoddart.com.au)



Customer  
Service Portal

---

## New Zealand

New Zealand Business Number: 6837694

### Service / Spare Parts

<https://customerservice.stoddart.com.au>

### Sales

Tel: 0800 79 1954

Email: [sales@stoddart.co.nz](mailto:sales@stoddart.co.nz)

Web: [www.stoddart.co.nz](http://www.stoddart.co.nz)



Customer  
Service Portal