

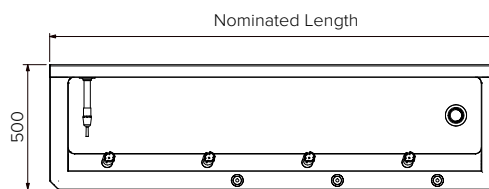
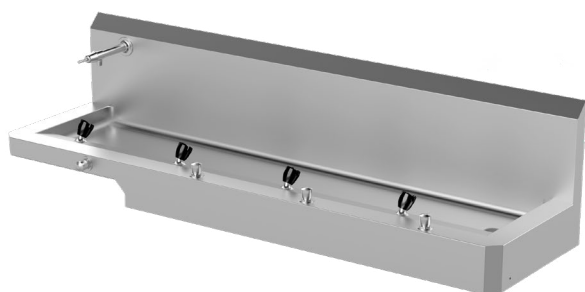
## Disabled Drinking Trough

### Model: SPPL.DT.D.PG.xxxx.yy

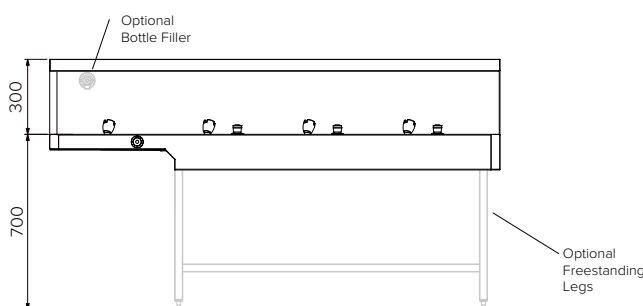
SPPL = Stoddart Plumbing Product  
 DT = Drink Trough  
 D = Disabled  
 PG = Pre-plumbed  
 xxxx = Nominated Length  
 yy = FS - Freestanding  
 eg.: for specification and ordering quote  
 Code: SPPL.DT.D.PG.2000

### Features and Benefits:

- Designed for schools and sports clubs
- Radius corners for easy cleaning, hygiene and safety
- Concealed plumbing and fixings for vandal resistance
- Bubblers are fitted with unique mouth guards to protect teeth from damage
- Disabled access compliant
- Optional bottle filler requires 300mm splashback



Plan View



Front View

### Specifications:

Construction: Fully welded seamless 304 grade 1.2mm thick stainless steel construction, no.4 satin finish.

Water Connection: 1/2" BSP water connection required

Waste Connection: 50mm, PVC waste supplied, trap is not included

Unit Fixing: The trough is standard with stainless steel wall mounting brackets with 11mm fixing holes and stainless steel Z clips for splashback.

Model No.	L x D x H (mm)
SPPL.DT.D.PG.xxxx	Nominated x 500 x 292
SPPL.DT.D.PG.xxxx.FS	Nominated x 500 x 850

### Sold Separately

Tapware Options:



CMPL.0931



Due to continuous product research and development, the information contained herein is subject to change without notice.

Revision: A - May 29, 2025 10:38 AM

[www.stoddart.com.au](http://www.stoddart.com.au)

[www.stoddart.co.nz](http://www.stoddart.co.nz)

