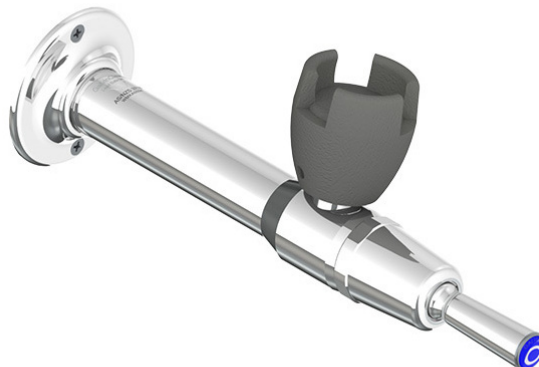


Features

- Manufactured using high quality DZR solid brass with less than 0.25% lead content
- A specially designed rubber mouthguard made from a durable, AS 4020-approved nitrile compound offers strong protection against bacteria, fungi, sunlight, and environmental wear, making it ideal for long-term use in schoolyards and playgrounds
- Vandal resistant design
- Inbuilt adjustment for consistency of water flow
- Easy to use handsfree self-closing mechanism
- High quality chrome finish for easy cleaning and hygiene maintenance



Technical Information

• WaterMark	AS 3718 Lic. WMKA0034
• WELS	6 Star Rating (2L/min)
• Nominal Flow Rate (LPM)	1.7
• Inlet	1/2" BSP - Female
• Outlet	Rubber Mouthguard
• Headwork	Lever Action
• Working Pressure Range (kPa)	50 Min - 500 Max
• Working Temperature Range (°C)	5 Min - 70 Max
• Construction	DZR Brass
• Finish	Chrome

