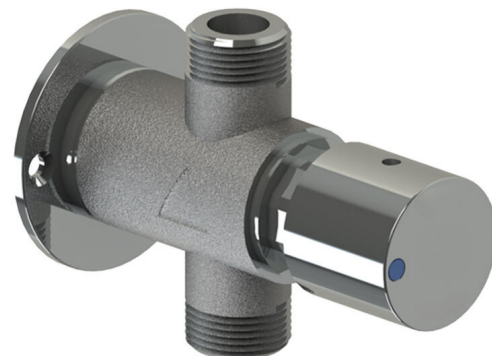


Features

- Manufactured using high quality DZR solid brass with less than 0.25% lead content
- Vandal resistant design
- Operate at full mains pressure
- Easy to use self-closing mechanism
- High quality chrome finish for easy cleaning and maintain hygiene



Technical Information

• WaterMark	AS 3718 Lic. WMKA0034
• Inlet	1/2" BSP - Male
• Outlet	1/2" BSP - Male
• Headwork	Time Flow Cartridge
• Working Pressure Range (kPa)	100 Min - 500 Max
• Working Temperature Range (°C)	5 Min - 65 Max
• Construction	Lead Safe™ DZR Brass
• Finish	Chrome

