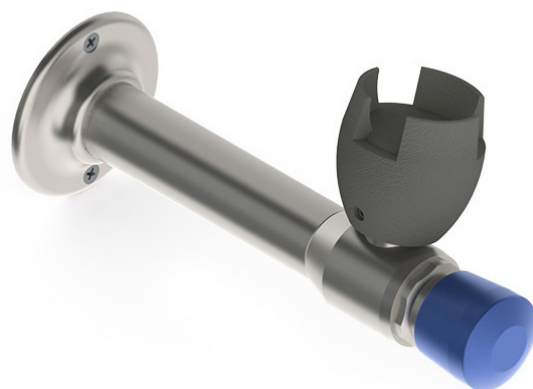


## Features

- Lead free 316 stainless steel construction
- A specially designed rubber mouthguard made from a durable, AS 4020-approved nitrile compound offers strong protection against bacteria, fungi, sunlight, and environmental wear, making it ideal for long-term use in schoolyards and playgrounds
- Vandal resistant design
- Inbuilt adjustment for consistency of water flow
- Easy to use self-closing mechanism



## Technical Information

• <b>WaterMark</b>	AS 3718 Lic. WMKA0034
• <b>WELS</b>	6 Star Rating (2.0L/min)
• <b>Nominal Flow Rate (LPM)</b>	1.7
• <b>Inlet</b>	1/2" BSP - Female
• <b>Outlet</b>	Rubber Mouthguard
• <b>Headwork</b>	Push Button
• <b>Working Pressure Range (kPa)</b>	50 Min - 500 Max
• <b>Working Temperature Range (°C)</b>	5 Min - 60 Max
• <b>Construction</b>	361 Stainless Steel
• <b>Finish</b>	Stainless Steel

