

**Steam  
BOX**  
EVOLUTION

ESSENCE OF EVOLUTION **COMBI OVENS**



**STACKED INSTALLATION**

(READ ALL INSTRUCTIONS BEFORE USE)

TO BE USED IN CONJUNCTION WITH USER MANUAL SUPPLIED WITH OVEN

**Electric Models:**

SERE061WT / SERE062WT  
SERE101WT / SERE102WT

**Page Intentionally Left Blank**


**Installation**


Setting Up Information . . . . . 3  
    *Handling*  
    *Unpacking*  
Positioning . . . . . 4  
    *General Information*  
    *Spacing*  
    *Levelling*  
Stacking Kit . . . . . 6  
    *Hardware*  
    *Assembly*  
Water Connection . . . . . 8  
    *Stoddart Standard Filter*  
    *Stoddart Supplied Reverse Osmosis Filter*  
Drainage Connection . . . . . 12

**Notes**

## Setting Up Information

	<b>IMPORTANT</b>
	<b>THIS MANUAL IS TO BE USED IN CONJUNCTION WITH THE USER MANUAL SUPPLIED WITH THE OVEN</b>

	<b>IMPORTANT</b>
	<b>To be installed only by an authorised service technician</b>

	<b>WARNING</b>
	<b>Improper installation, adjustments, alterations, service or maintenance can cause property damage, injury or death</b>

### **Handling**

- Use suitable means to move the unit;
  - For smaller items use two people
  - For large items a fork lift, pallet trolley or similar (the forks should reach completely beneath the pallet)

### **Unpacking**

- Check the unit for damage before and after unpacking. If unit is damaged, contact the distributor and manufacturer
- Should any item have physical damage, report the details to the freight company and to the agent responsible for the dispatch within seven (7) days of receipt. No claims will be accepted or processed after this period
- Remove all protective plastic film, ties and packers before installing and operating
- Clean off any remaining residue from the interior/exterior of the unit using a clean cloth dampened with warm soapy water

## Positioning

	<b>IMPORTANT</b>
	<p><b>Do not install unit under a bench. Under bench installation will void warranty</b></p>

### General Information

- The oven must be installed under an extraction canopy that meets AS 1668.2.
- Have a smooth, level floor which can bear the weight of the appliance at full load
- Have a room temperature above +4°C with a maximum humidity of 70%;
- Comply with the regulations in force in terms of safety in the workplace and the systems;
- Not contain potentially explosive materials or substances;
- Be dedicated to food preparation. In addition, a gas-fired appliance requires, by law, rooms with a surface area and ventilation that are suitable for the power of the oven and that have a means of externally evacuating flue gases
- Please consult national and local standards to ensure that your unit is positioned and ventilated in accordance with any existing requirements
- Do not allow cables or other items to rest/hang over the exhaust vents
- Do not install unit under a bench
- No equipment is to be installed/placed on the Service compartment (top of oven) excluding stacked applications using a Stoddart stacking kit and/or Stoddart Recirculating Hood. The service compartment must be easily accessible. Failure to adhere may add service costs due to lack of access.

### Spacing

To allow access to service panel and protection of the control components, the service side of the Combi oven must have the following minimum clearances:

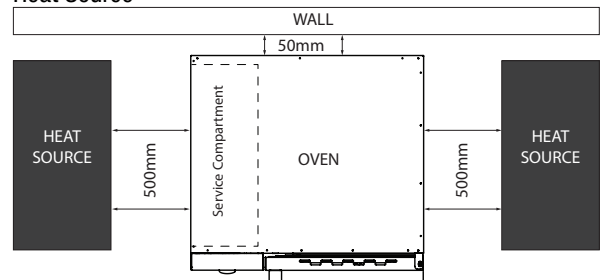
#### Service compartment Heat Source

500mm clearance from another heat source, in order to protect the oven control components and allow access to the service panel. For distances under 500mm, it is mandatory for Stoddart heat shields to be fitted (for a minimum distance of 300mm from the service compartment). Failure to adhere to minimum clearances may void the oven warranty and add service costs due to lack of access

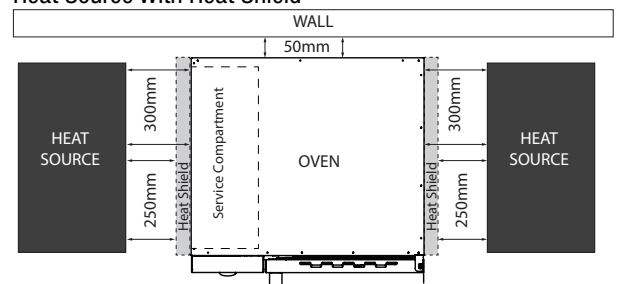
#### Service compartment Non-Heat Source

300mm clearance from a non-heat source to allow access to the service panel. Any distance under 300mm, will add service costs due to lack of access

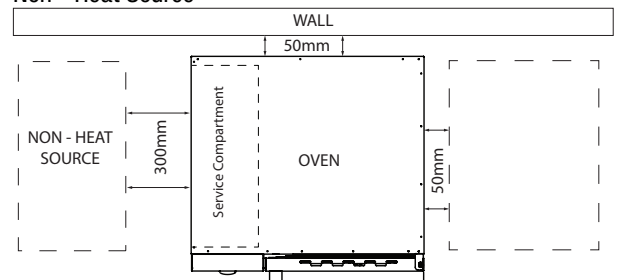
Heat Source



Heat Source With Heat Shield



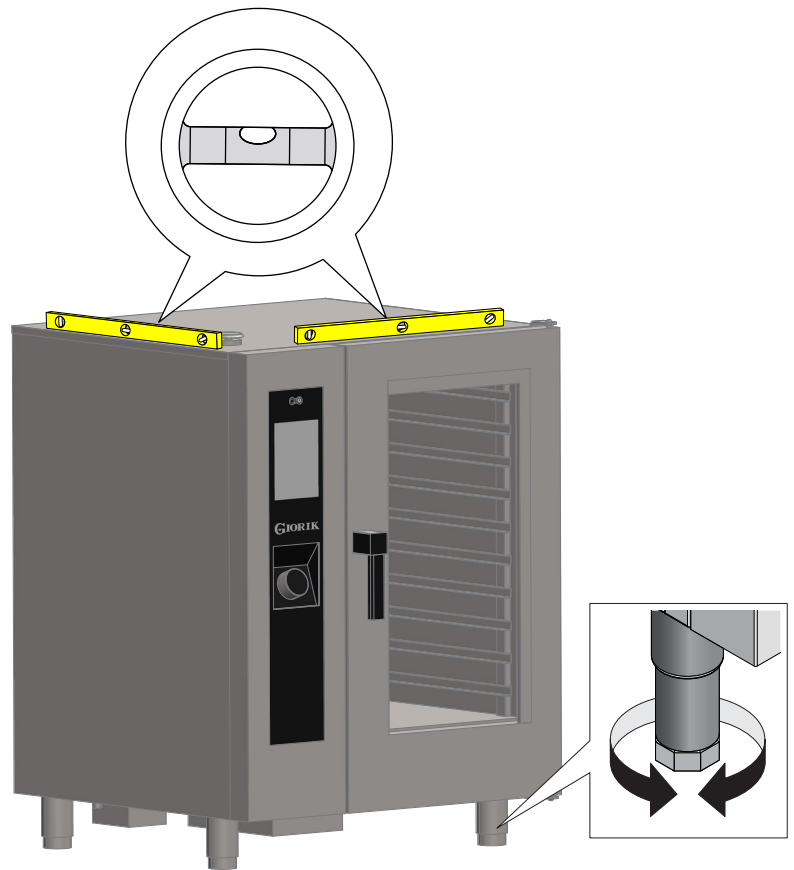
Non - Heat Source



Due to continuous product research and development, the information contained herein is subject to change without notice.

**Levelling**

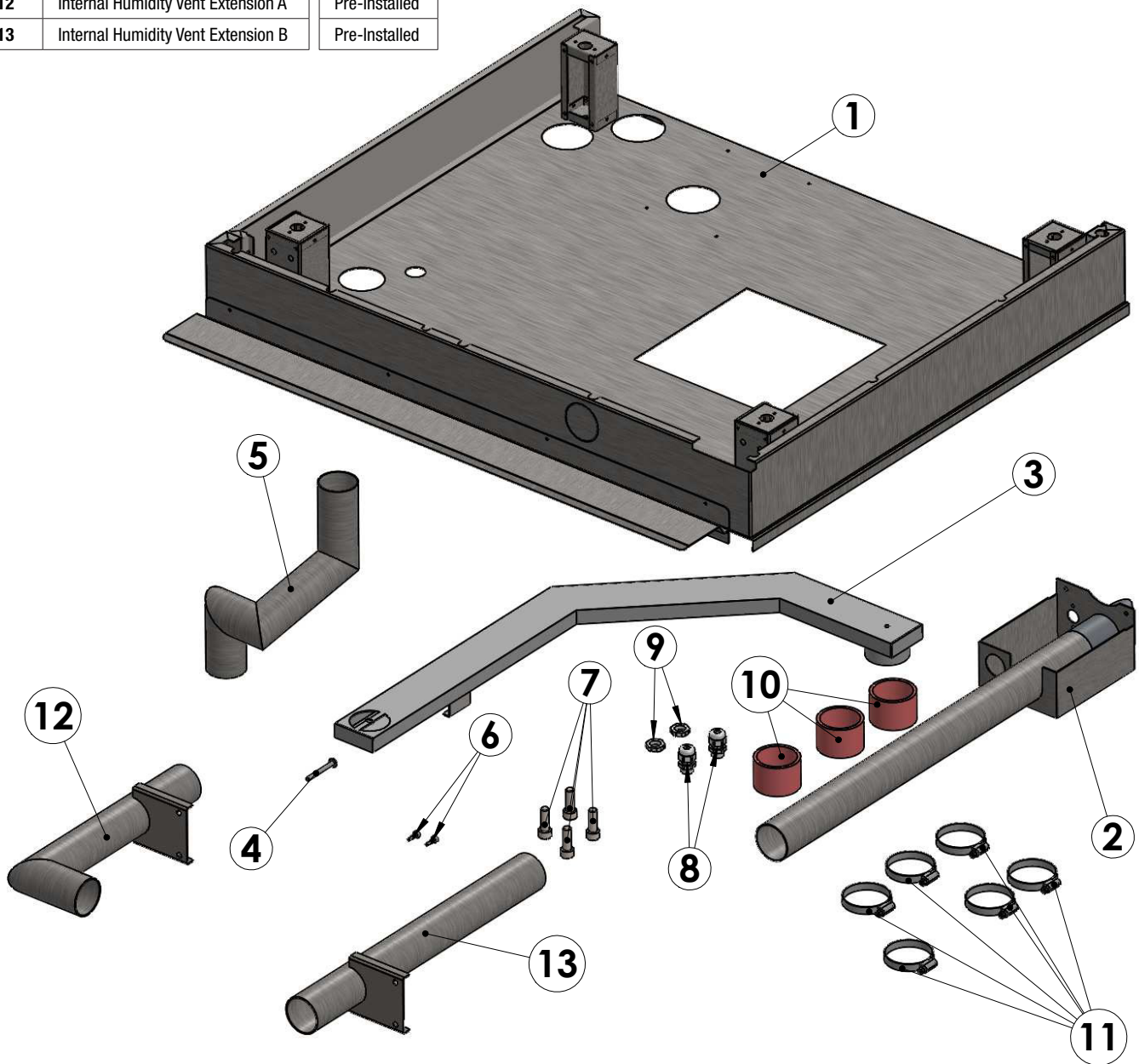
- Before assembling the stacking kit the base combi oven must be level
- Using a spirit level, ensure that the Combi oven is level. Adjust the foot height to level Combi oven if required



## Stacking Kit

### Hardware

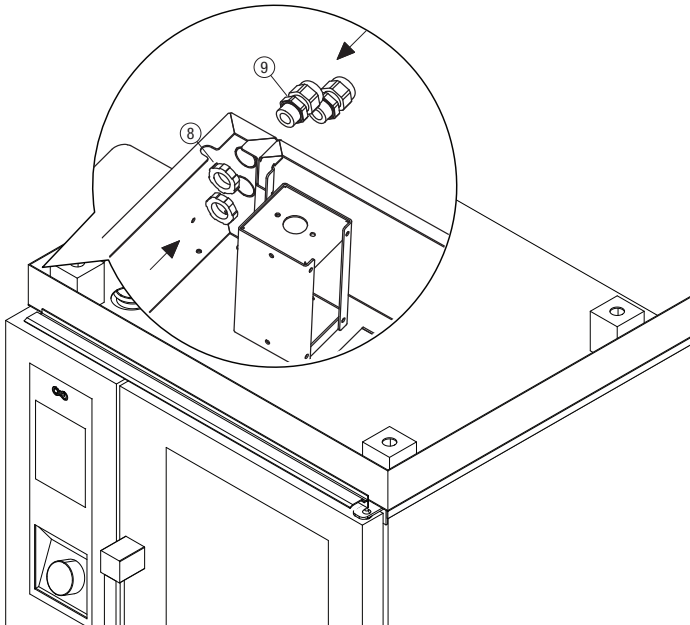
1	Base Unit	Pre-Installed
2	Upper Humidity Vent Extension	
3	Boiler Vent Extension	Pre-Installed
4	Boiler Screw M5 x 50mm	Pre-Installed
5	Lower Humidity Vent Extension	Pre-Installed
6	Self Tapping Screws x 2	
7	Small Feet	
8	Cable Gland Nut x 2	
9	Cable Gland x 2	
10	Silicone Tube	Pre-Installed
11	Hose Clamp Large x 6	
12	Internal Humidity Vent Extension A	Pre-Installed
13	Internal Humidity Vent Extension B	Pre-Installed



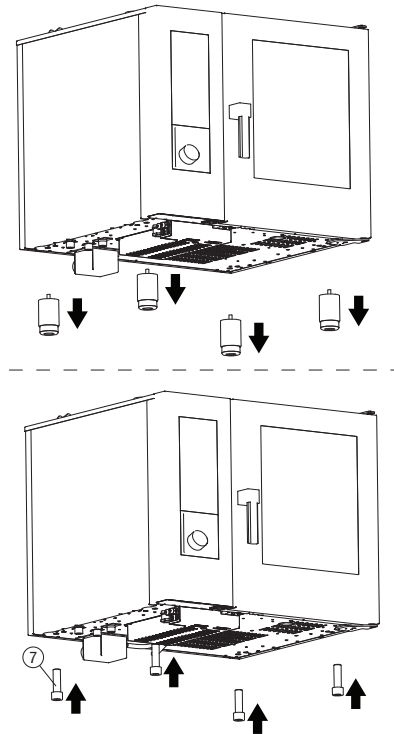
Due to continuous product research and development, the information contained herein is subject to change without notice.

**Assembly**

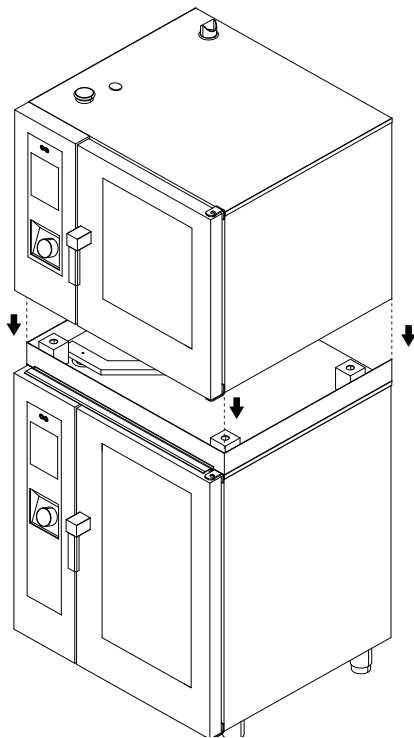
1. Insert the gland nuts into the stacking base and secure with gland nuts



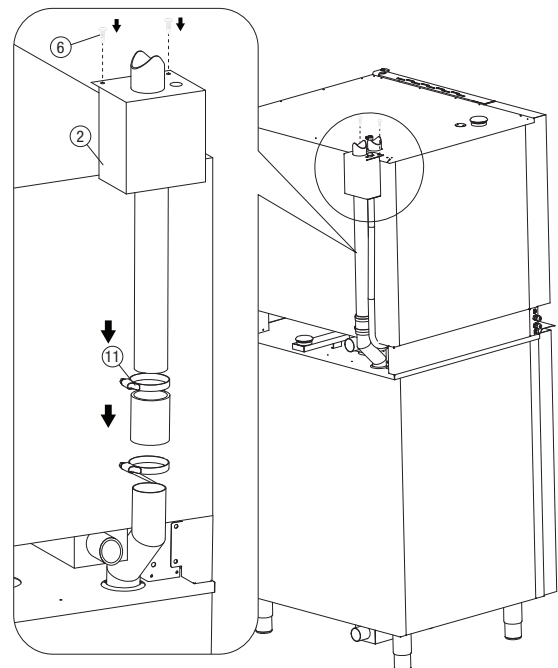
2. Replace the four feet on the oven with the four small feet (wind the feet all the way in)



6. Place upper oven on the stacking kit (minimum four people) Ensure the four small feet sit in the locating holes



3. Attach silicone tube to the lower humidity extension, secure with hose clamp
4. Insert the upper humidity extension into the silicone tube, secure with hose clamp
5. Secure the top of the humidity vent to the oven using the self tapping screws



## Water Connection

### Stoddart Standard Filter

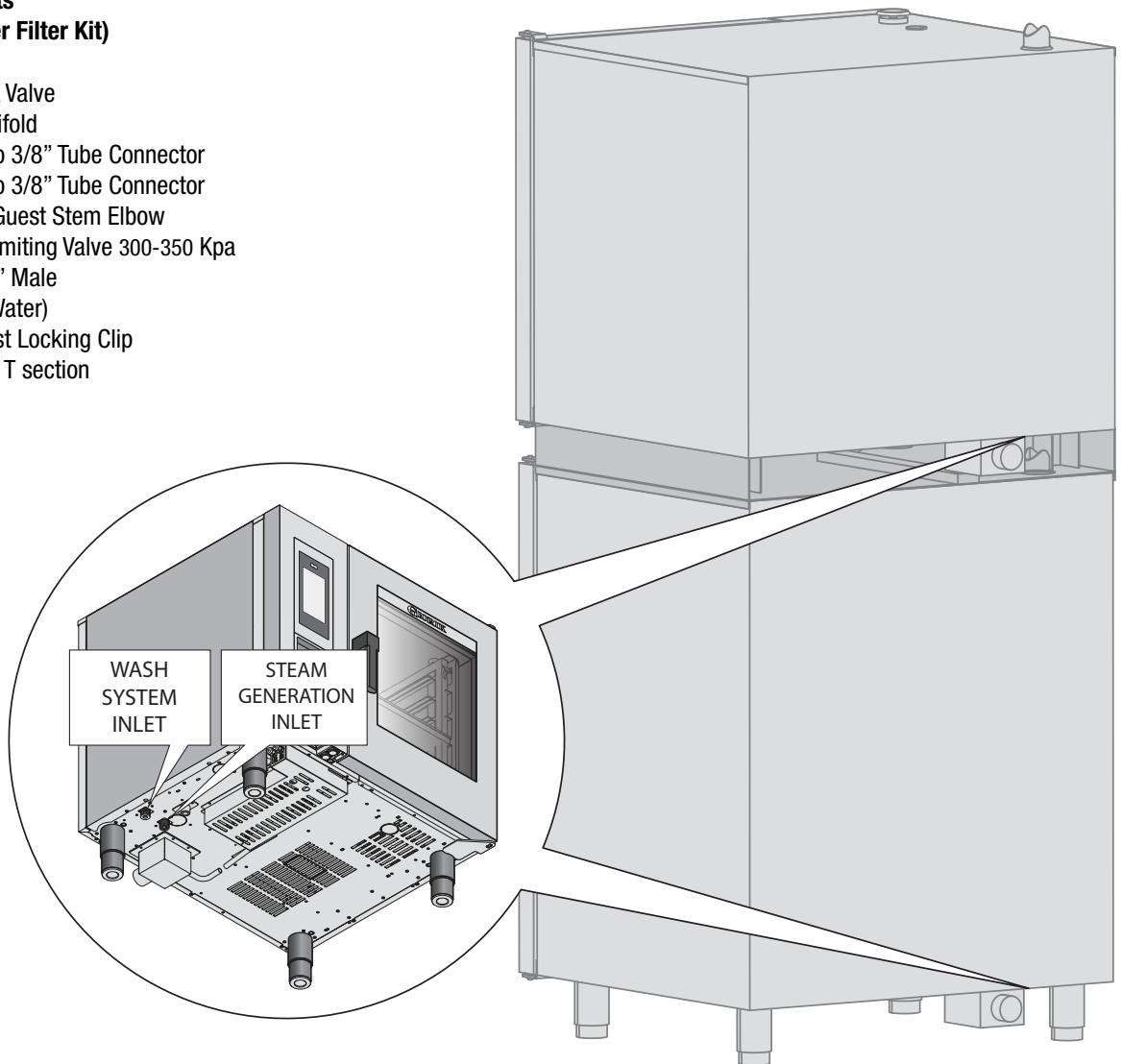
	<b>IMPORTANT</b>
	<p>This oven must be installed in accordance with AS/NZS 3500.1 The Oven must be installed with the supplied Dual Check Valve, Water Filter and Pressure Limiting Valves</p>

- Water connections are labelled on the oven
- Isolation valve must be installed at the water supply outlet
- **Water Temperature:**  
Cold water connection - Min 10°C, Max 35°C
- **Steam Generation:**  
The Combi oven requires filtered water supplied to its steam generation system. Water pressure must be 150-350 kPa at oven connection. This is controlled with the supplied PLV
- **Wash System:**  
The Combi oven requires unfiltered water supplied to its wash system.  
Water pressure must be 150-350 kPa at oven connection. This is controlled with the supplied PLV
- Refer to the Stoddart Standard Filter user manual for filter setup

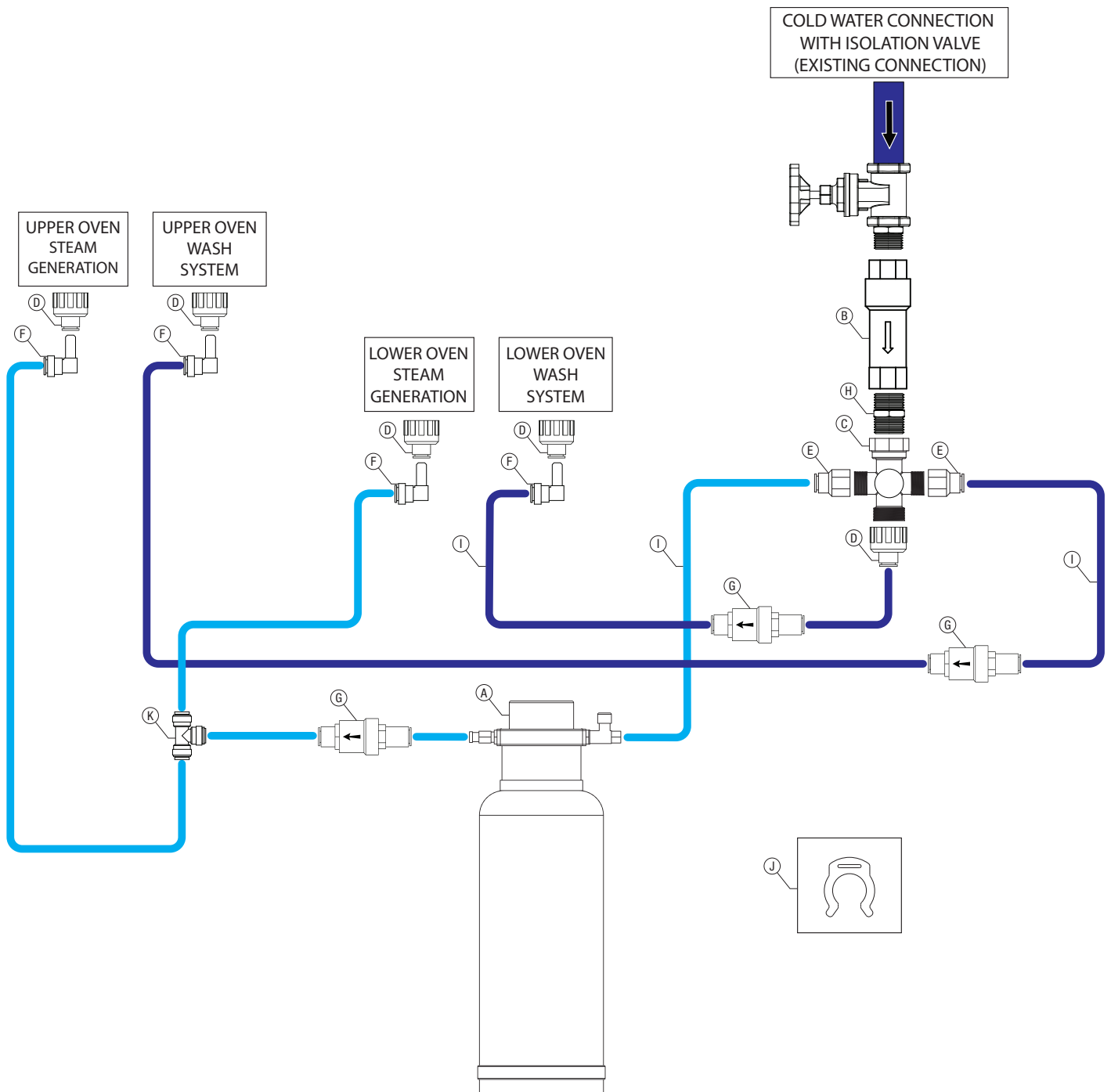
### Supplied Components

#### (Plumbing Kit / Water Filter Kit)

- A. 1 x BWT Filter
- B. 1 x Dual Check Valve
- C. 1 x 4 Way Manifold
- D. 5 x 3/4" BSP To 3/8" Tube Connector
- E. 2 x 1/2" BSP To 3/8" Tube Connector
- F. 4 x 3/8" John Guest Stem Elbow
- G. 3 x Pressure Limiting Valve 300-350 Kpa
- H. 1 x Nipple, 3/4" Male
- I. 1 x 3/8 Tube (Water)
- J. 21 x John Guest Locking Clip
- K. 1 x John Guest T section



Due to continuous product research and development, the information contained herein is subject to change without notice.



## Stoddart Supplied Reverse Osmosis Filter

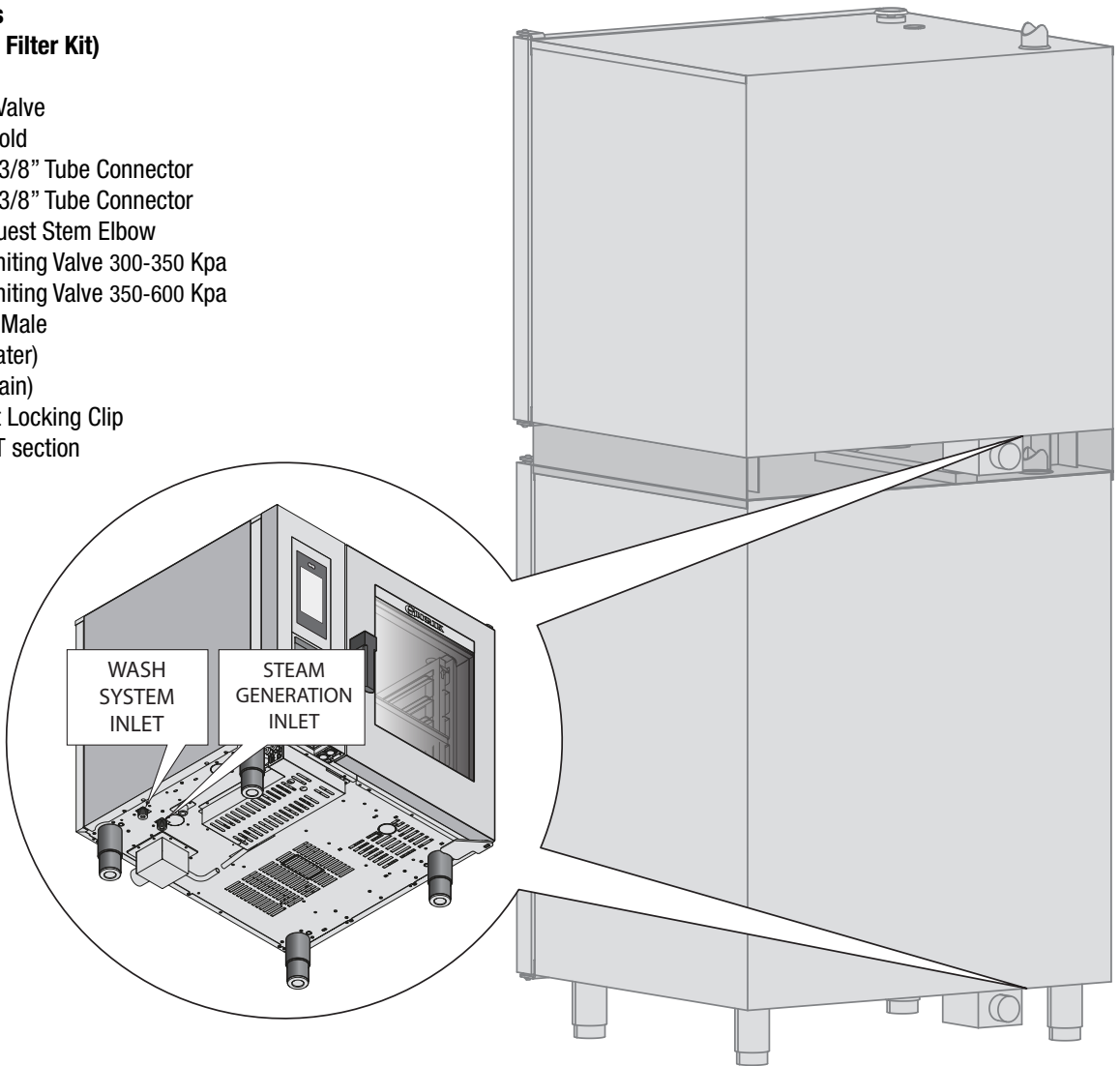
	<b>IMPORTANT</b>
	<p><b>This oven must be installed in accordance with AS/NZS 3500.1</b>  <b>The Oven must be installed with the supplied Dual Check Valve, Water Filter and Pressure Limiting Valves</b></p>

- Water connections are labelled on the oven
- Isolation valve must be installed at the water supply outlet
- **Water Temperature:**  
Cold water connection - Min 10°C, Max 35°C
- **Steam Generation:**  
The Combi oven requires filtered water supplied to its steam generation system. Water pressure must be 150-350 kPa at oven connection. This is controlled with the Stoddart RO system
- **Wash System:**  
The Combi oven requires unfiltered water supplied to its wash system.  
Water pressure must be 150-350 kPa at oven connection. This is controlled with the supplied PLV
- Refer to the Stoddart supplied RO user manual for filter setup

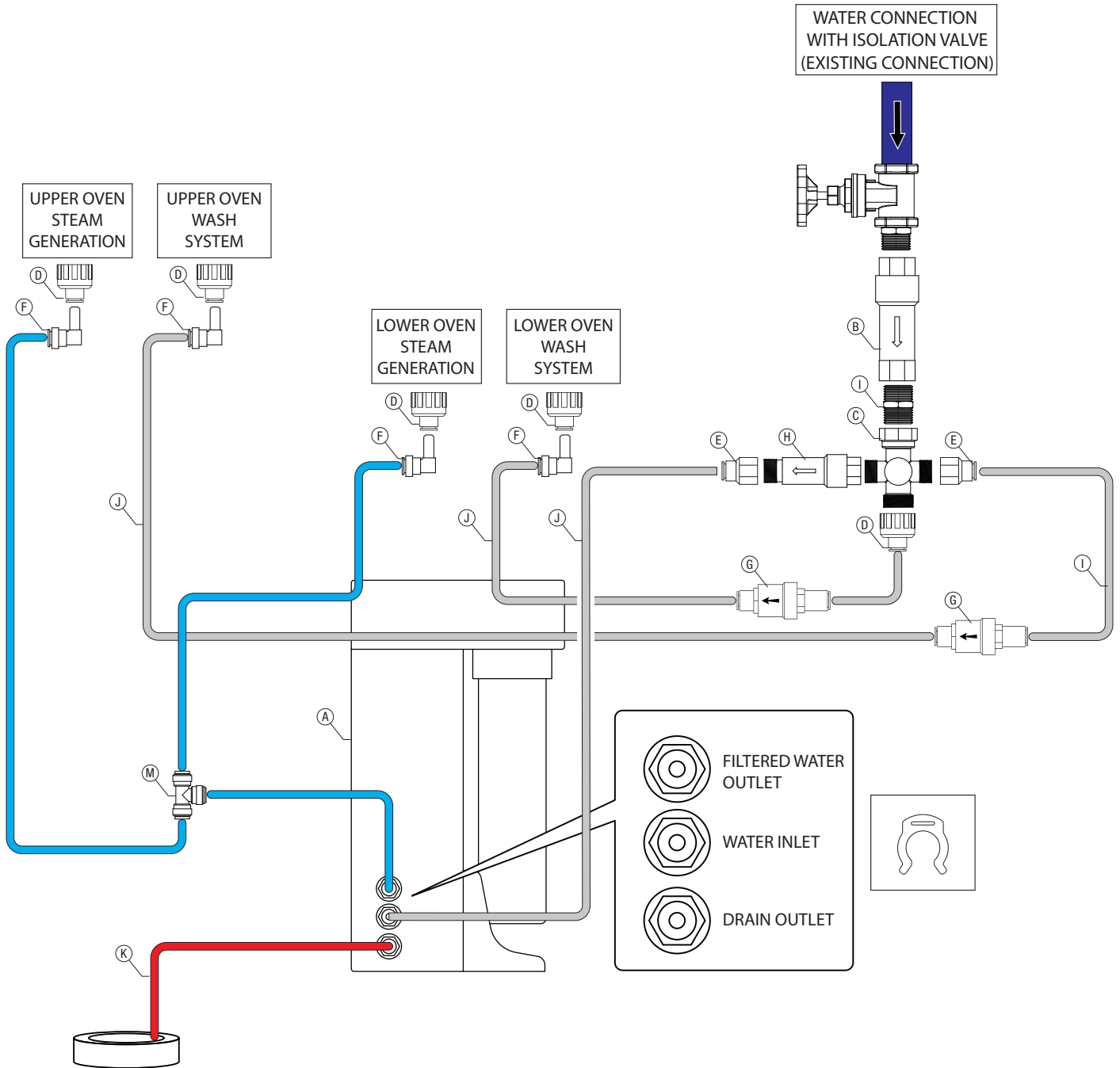
### Supplied Components

#### (Plumbing Kit / Water Filter Kit)

- A. 1 x Ro Unit
- B. 1 x Dual Check Valve
- C. 1 x 4 Way Manifold
- D. 5 x 3/4" Bsp To 3/8" Tube Connector
- E. 2 x 1/2" Bsp To 3/8" Tube Connector
- F. 4 x 3/8" John Guest Stem Elbow
- G. 2 x Pressure Limiting Valve 300-350 Kpa
- H. 1 x Pressure Limiting Valve 350-600 Kpa
- I. 1 x Nipple, 3/4" Male
- J. 1 x 3/8 Tube (Water)
- K. 1 x 1/4 Tube (Drain)
- L. 21 x John Guest Locking Clip
- M. 1 x John Guest T section

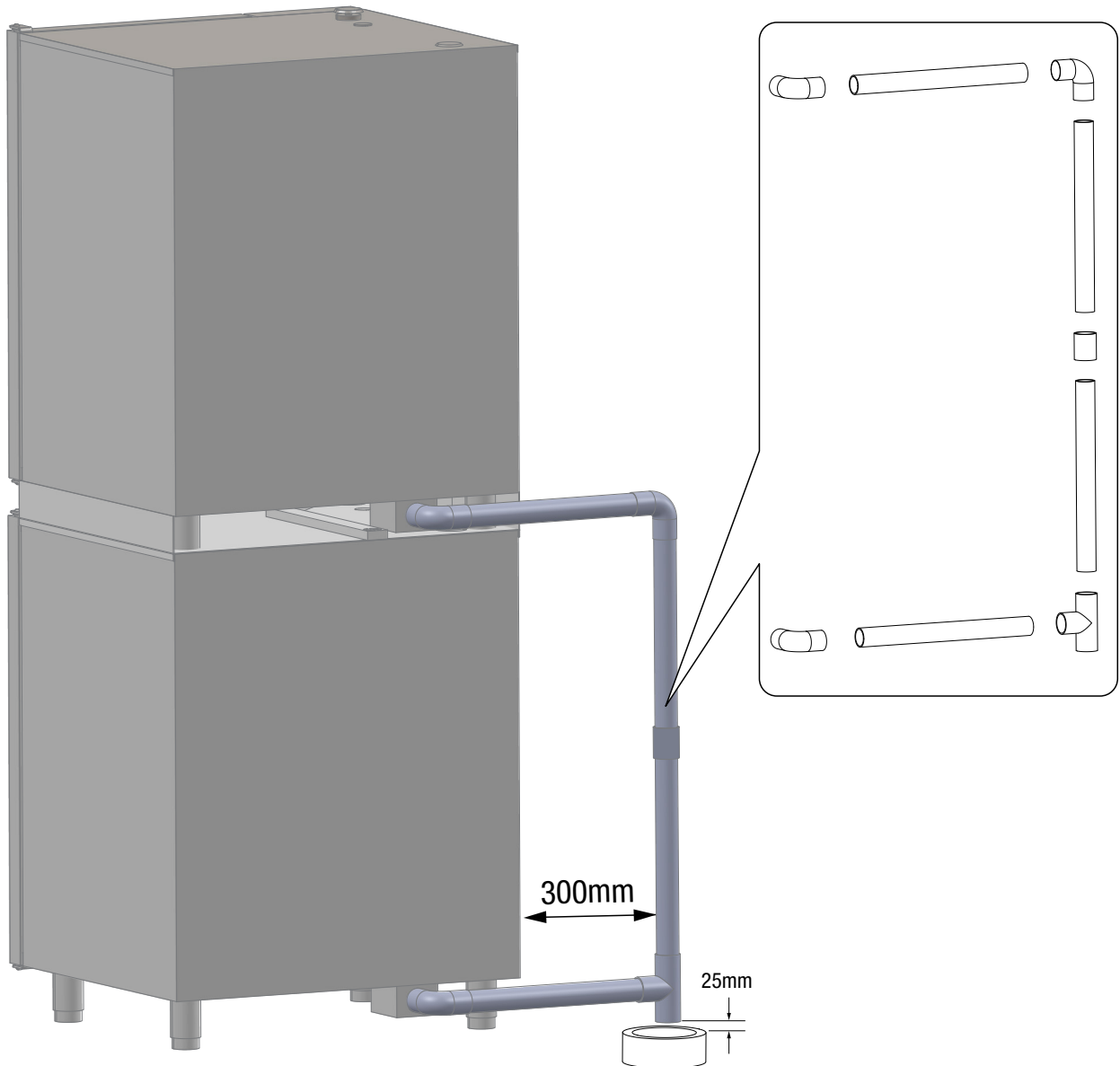


Due to continuous product research and development, the information contained herein is subject to change without notice.



## Drainage Connection

- Drain kit is supplied with oven as illustrated. Any modification or extension to the kit must be able to resist temperatures up to 100°C
- Plumb supplied waste pipes to the Tundish
- Tundish needs to be a minimum of 300mm from the outlet on the service side of the oven
- Tundish should never be located directly below the waste outlet, or close to or under the oven control compartment. Steam from drainage should not be allowed to rise up underneath the oven control compartment
- Waste pipe must sit 25mm above the Tundish
- Secure waste pipe to the Combi oven. Securing bracket is attached to top of the Combi oven. Remove screw, reposition bracket, then secure in place with previously removed screw



Due to continuous product research and development, the information contained herein is subject to change without notice.





## Australia

Australian Business Number: 16009690251

### Service / Spare Parts

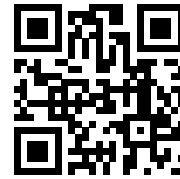
<https://customerservice.stoddart.com.au>

### Sales

Tel: 1300 79 1954

Email: [sales@stoddart.com.au](mailto:sales@stoddart.com.au)

Web: [www.stoddart.com.au](http://www.stoddart.com.au)



Customer  
Service Portal

---

## New Zealand

New Zealand Business Number: 6837694

### Service / Spare Parts

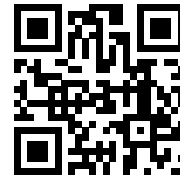
<https://customerservice.stoddart.com.au>

### Sales

Tel: 0800 79 1954

Email: [sales@stoddart.co.nz](mailto:sales@stoddart.co.nz)

Web: [www.stoddart.co.nz](http://www.stoddart.co.nz)



Customer  
Service Portal