

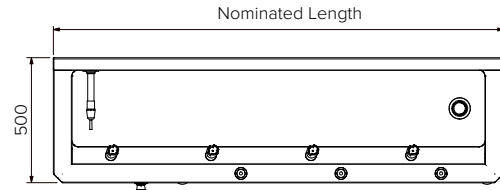
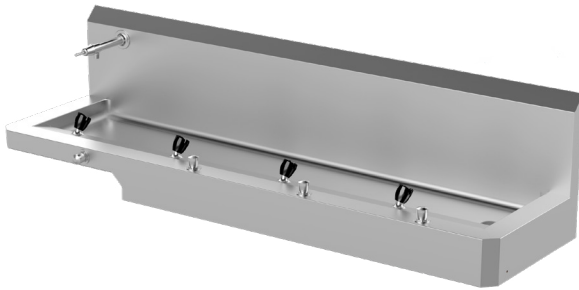
# Disabled Drinking Trough

**Model: SPPL.DT.D.PG.xxxx.yy**

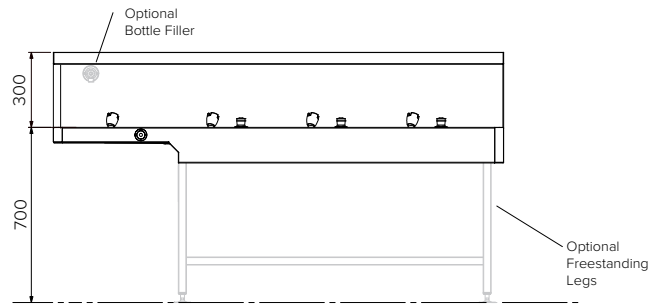
SPPL = Stoddart Plumbing Product  
 DT = Drink Trough  
 D = Disabled  
 PG = Pre-plumbed  
 xxxx = Nominated Length  
 yy = FS - Freestanding  
 eg: for specification and ordering quote  
 Code: SPPL.DT.D.PG.2000

**Features and Benefits:**

- Designed for schools and sports clubs
- Radius corners for easy cleaning, hygiene and safety
- Concealed plumbing and fixings for vandal resistance
- Bubblers are fitted with unique mouth guards to protect teeth from damage
- Disabled access compliant
- Optional bottle filler requires 300mm splashback



**Plan View**



**Front View**

**Specifications:**

Construction: Fully welded seamless 304 grade 1.2mm thick stainless steel construction, no.4 satin finish.  
 Water Connection: 1/2" BSP water connection required  
 Waste Connection: 50mm, PVC waste supplied, trap is not included  
 Unit Fixing: The trough is standard with stainless steel wall mounting brackets with 11mm fixing holes and stainless steel Z clips for splashback.

Model No.	L x D x H (mm)
SPPL.DT.D.PG.xxxx	Nominated x 500 x 292
SPPL.DT.D.PG.xxxx.FS	Nominated x 500 x 850

Sold Separately - Tapware Options:



CMPL.0931

Tapware components supplied for this appliance are Watermarked and WELS rated



Due to continuous product research and development, the information contained herein is subject to change without notice.

Revision: C - 01/05/2026 - 01

www.stoddart.com.au  
 www.stoddart.co.nz

