

## Wash Basin Knee Operated - Type 3

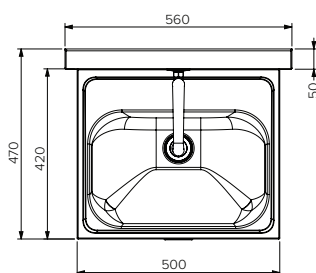
### Model: SPPL.WB.KO3.xxx

SPPL = Stoddart Plumbing Product  
 WB = Wash Basin  
 KO3 = Knee operated, with lower plumbing shroud wall spout  
 xxx = TV = Tempering valve  
 =TMVE = Thermostatic mixing valve  
 eg: for specification and ordering quote  
 Code: SPPL.WB.KO3.TV

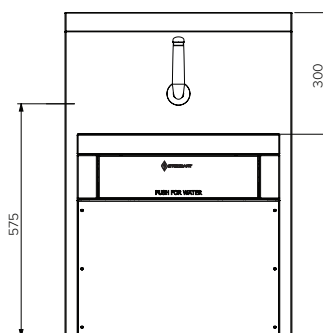


### Features and Benefits:

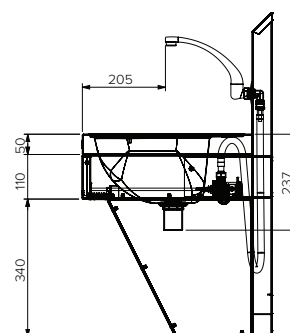
- Meets the requirements for hand washing in food premises as detailed in AS4674:2004 (4.4)
- Hygienic hands free use with knee operated front panel
- Timed flow valve provides effective hand washing and saves water
- Lead free compliant
- Includes hygienic, aerated, WELS rated high rise spout for easy access and minimal splash
- Integrated splashback, spout and shroud enclose plumbing for maximum hygiene
- Optional tempering valve and thermostatic mixing valve can be supplied, loose
- Easy mount stainless steel bracket has multiple fixing holes for quick installation by plumber
- Complies with AS 1428.1-2001 for disabled access



Plan View



Front View



End View

### Specifications:

**Construction:** 304 grade stainless steel construction, Knee operated valve and spout are pre-plumbed.

**Water Connection:** 15mm, 1/2" BSP. For addition of optional TV or TMVE, hot and cold supplies are required. Component claimed temperature control;  
 • Thermostatic Mixing Valve = +/- 2 deg C  
 • Tempering Valve = +/-3 deg C  
 Additional water strainer/filter to protect valves from water-borne dirt and scale is fitted as standard.

**Waste Connection:** 40mm PVC waste supplied (Trap by others)

**Unit Fixing:** Unit is supplied with wall mounting bracket with 10mm fixing holes. Optional TV or TMVE is supplied as a loose kit part for plumber to install in compliance with regulations.

**Fixing Height:** The unit should be mounted at 800 – 830mm above finished floor level for disabled user access

Model No.	L x D x H (mm)
SPPL.WB.KO3.xxx	560 x 469 x 800



Due to continuous product research and development, the information contained herein is subject to change without notice.

Revision: C - 29/20/2026 - 03

www.stoddart.com.au  
 www.stoddart.co.nz