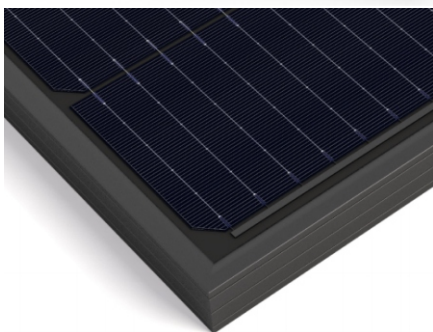


High Efficiency, High Qaulity PV Module

182' CELL HALF-CUT MONO 410Wp



MODULE CHARACTERISTICS

- ◆ Solar Cell: High efficiency crystalline solar cell. Even if under the weak light, the solar module can produce maximum power output.
- ◆ Tempered glass: Anti-reflecting coating and high transmission rate glass increase the power output and mechanical strength of solar module.
- ◆ EVA and TPT: Using high quality EVA and TPT to prevent destroying and water.
- ◆ Al frame: Without screw, corner connection. 8 holes on the frame can be installed easily.
- ◆ Junction box: Multi function junction box with water proof and bypass diode, which protects the module from burning caused by hot-spot effect because of shading
- ◆ High reliability with guaranteed 0~+5W power output tolerance, ensuring return on investment
- ◆ Withstands high wind-pressure 3800Pa and snow load 5400Pa (passed IEC mechanical loading test), and extreme temperature variations. Resisting moisture and etching effectively, not effect by geology.
- ◆ Rigorous quality control meeting the highest international standards ISO 9001:2000 (Quality Management System) and ISO 14001:2004 (Environmental Management System) certified factories manufacturing world class products.
- ◆ 12-year product quality guarantee and 25-year power output transferable guarantee. Long lifetime: ≥25 years; Less power decrease.

ELECTRICAL PARAMETERS

Model No.	BL-SP410M-B
Maximum Power at STC (Pmax)	410 Wp
Open Circuit Voltage (Voc)	37.32 V
Short Circuit Current (Isc)	13.95 A
Optimum Operating Voltage (Vmp)	31.45 V
Optimum Operating Current (Imp)	13.05 A
Module Efficiency	21.00 %
Power Tolerance	0~+5 W
Operating Temperature	-40°C to +85°C
Maximum System Voltage	1500V DC

SOLAR PHOTOVOLTAIC MODULE

MODEL: BL-SP410M-B (all in black with 10BB 182 cells)

SKANBATT

COMPLY WITH ISO9001:2008

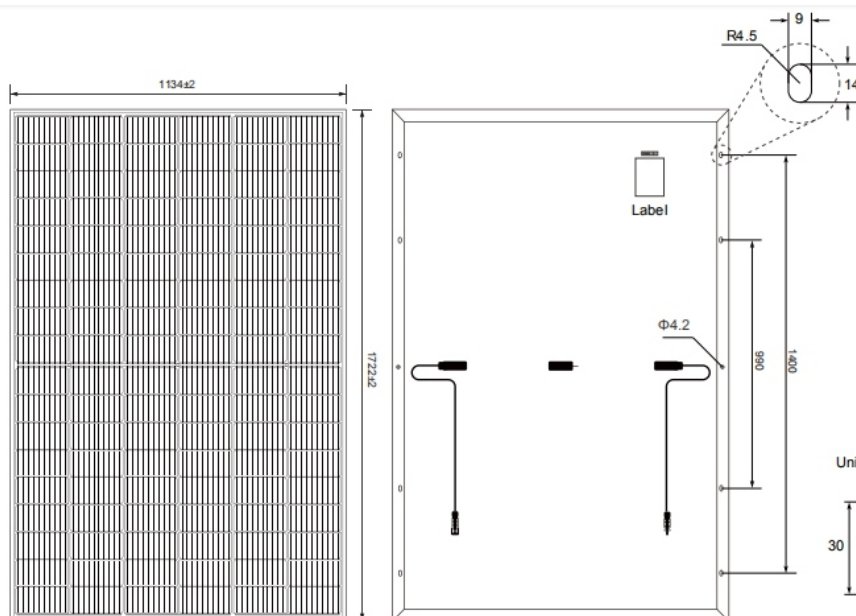
MECHANICAL PARAMETERS

Cell Type	Mono-crystalline silicon 182x91mm
No. of Cells and Connection	108 (2x54)
Dimensions of Module	1722x1134x30mm
Weight	20.5 kg
Area	1.95 m ²
Cable & Connector Type	4.0mm ² , 30cm (+), 30cm (-),
Junction Box Type	IP 68 Pass TUV
Front Class	3.2mm tempered glass
Frame	Anodized Aluminium Alloy
Max.Series Fuse Rating	20 A
Surface Max.Load Capacity	2400-5400 Pa
Max. Hail Load	23m/s, 7.53g
Standard Test Condition	AM1.5 1000W/m ² 25 ±2°C

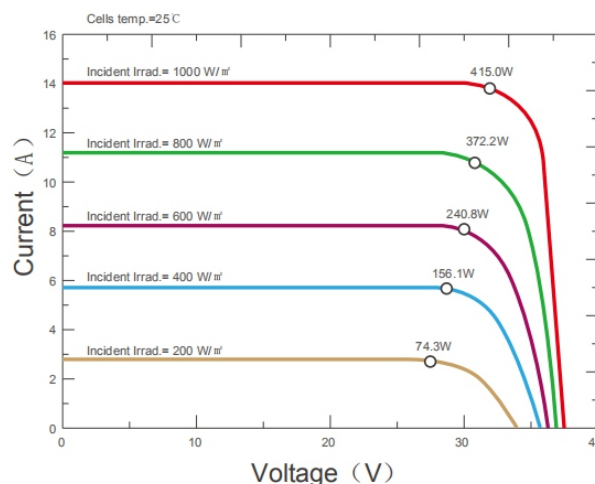
TEMPERATURE COEFFICIENTS

NOCT	45±2°C
Peak Power Tk(Wp)	-0.36 %/°C
Open Circuit Voltage Tk(Voc)	-0.33 %/°C
Short Circuit Current Tk(Isc)	0.05 %/°C

MECHANICAL DIMENSIONS



I-V CURVE



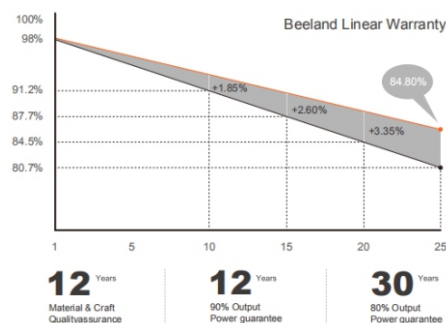
PRODUCT GARANTEE

Product Quality	12 years
Power Output	Not less than 90% in 12 years Not less than 80% in 25 years
Certificate	ISO9001, IEC61215&61730, CE

PACKING AND LOADING

Packing Way	Wooden box or Carton
1*20' Container	216pcs
1*40HQ Container	936pcs

SOLAR POWER SYSTEM SUPPLIER



12 Years
Material & Craft
Quality assurance

12 Years
90% Output
Power guarantee

30 Years
80% Output
Power guarantee

