

# ADVENTURES WITH **ROSIE & GIBBS** *the lost penguins*



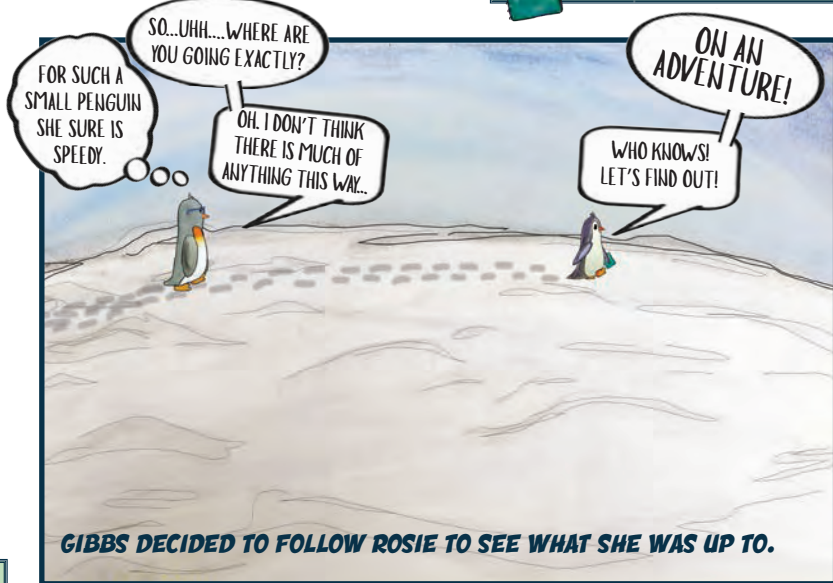
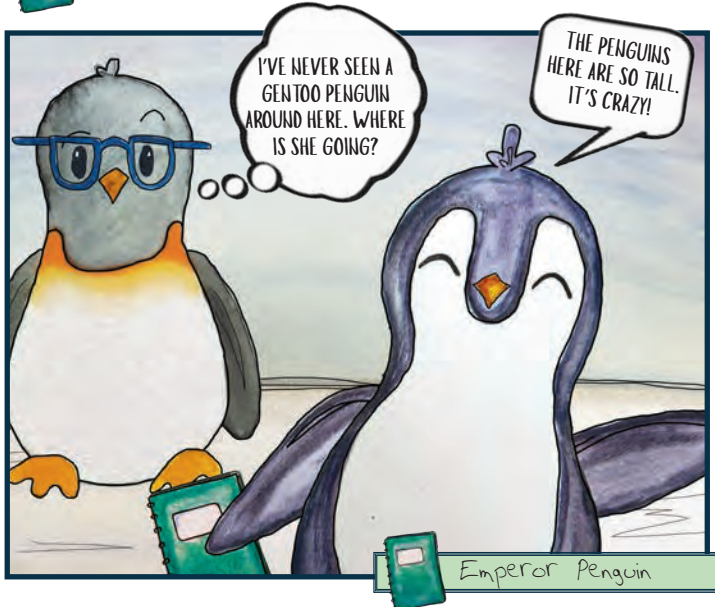
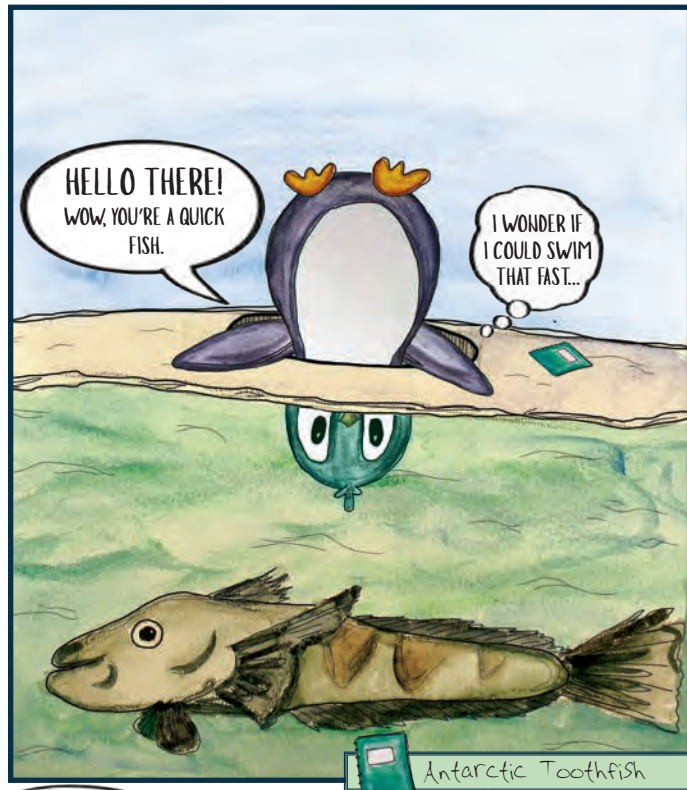
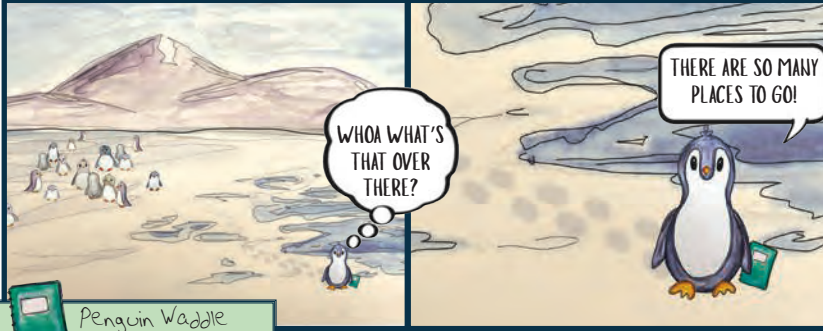
**ADVENTURE 1: THE JOURNEY TO THE SOUTH POLE**

**MARCH 2018**

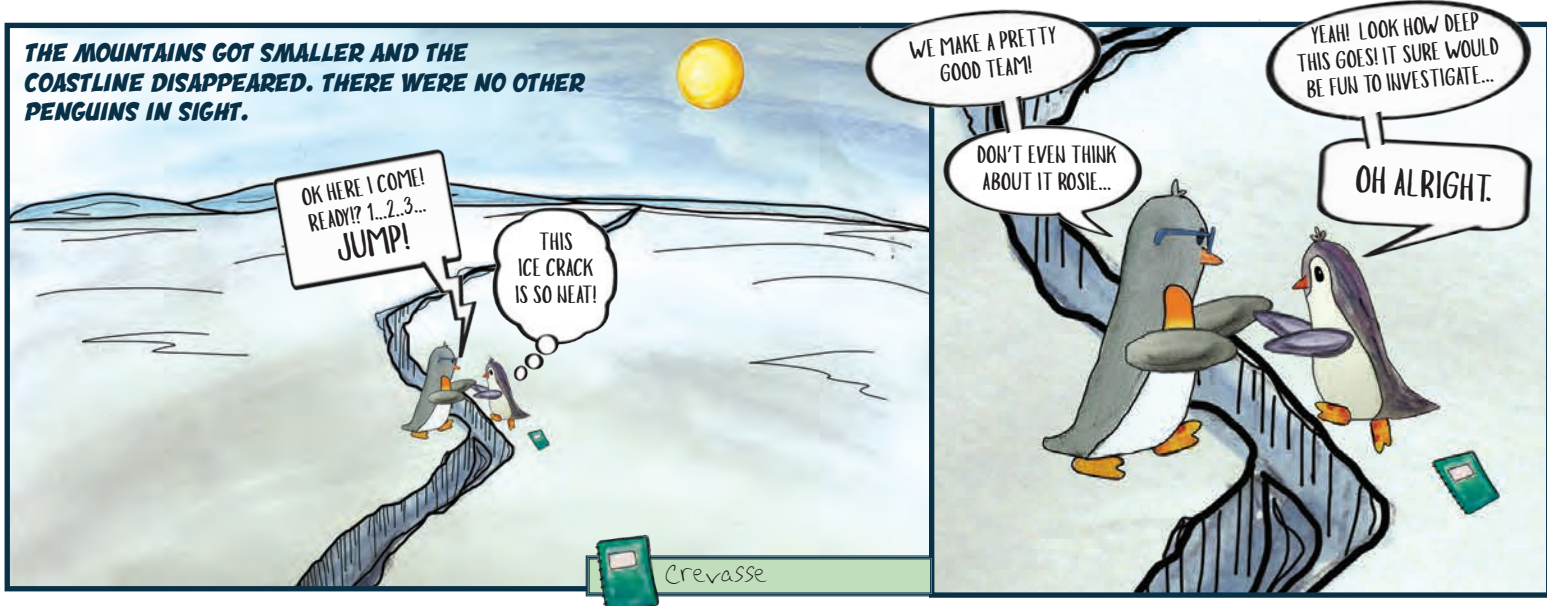
## MEET ROSIE.

ROSIE IS A CURIOUS AND ADVENTUROUS PENGUIN THAT LIVES IN ANTARCTICA. SHE LOVES TO EXPLORE AND WRITE DOWN EVERYTHING SHE FINDS IN HER SPECIAL GREEN NOTEBOOK.

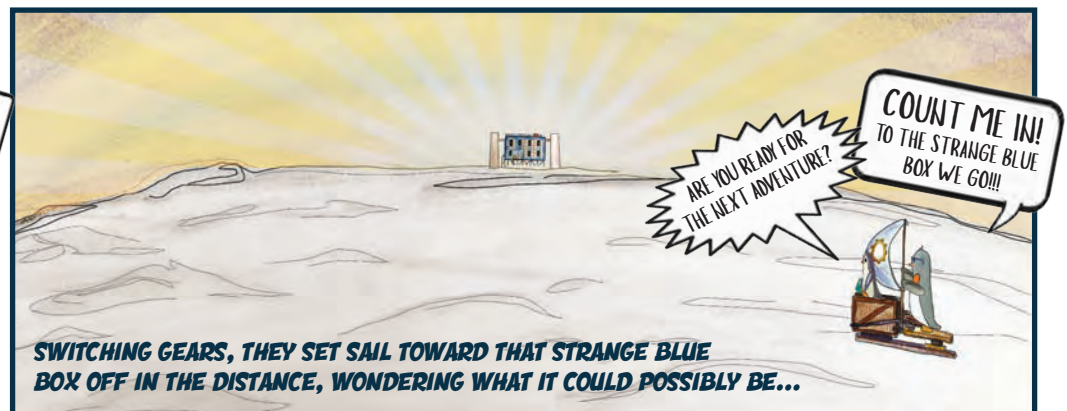
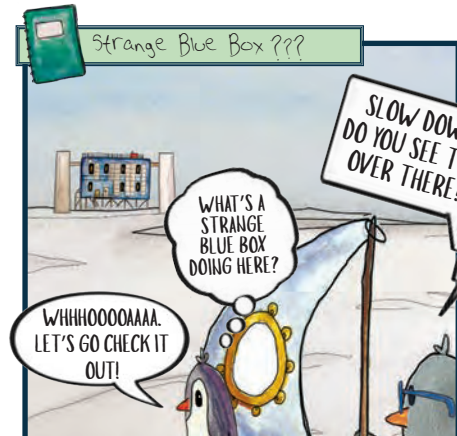
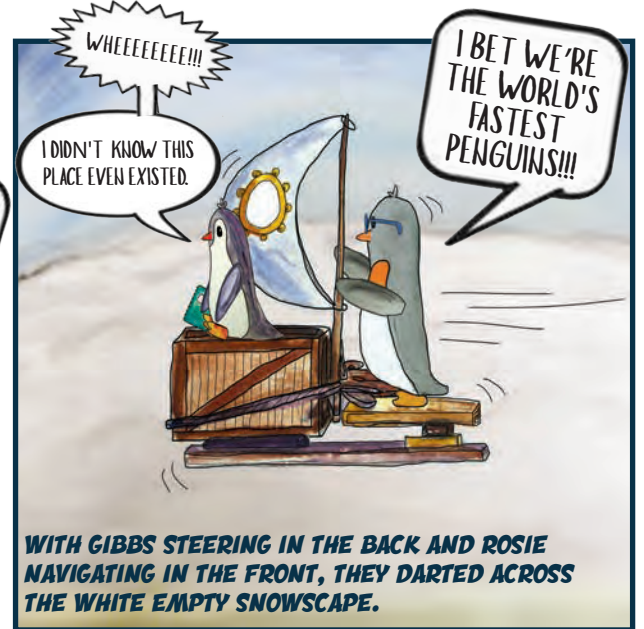
SHE TENDS TO WANDER A BIT FAR FROM HOME... WAY TOO FAR!



THE MOUNTAINS GOT SMALLER AND THE COASTLINE DISAPPEARED. THERE WERE NO OTHER PENGUINS IN SIGHT.



DAYS PASSED WITHOUT ANY SIGN OF FISH. THEY HAD NO CLUE WHERE THEY WERE, AND THEY NEEDED TO MOVE FAST...



# Rosie's Discoveries

## Antarctic toothfish:

A species of cod icefish that swims in extremely cold water. They can grow up to the size of a small human. And they are very delicious.

## Emperor penguin:

The tallest penguin! They are known for their bright yellow and orange markings near their face. Male emperors will sit on their eggs in the freezing cold for two whole months. That's so neat!

## Gentoo penguin:

That's me! We love to eat krill and fish. We are lighter in color when we are younger. I thought by now I would already have the cool white marks that older penguins have by their eyes, but I guess I will have to wait longer.

## Penguin waddle or colony:

A group of penguins on land is called a waddle. In the water it is a raft of penguins. Other words include a rookery, a huddle, and a colony.

## Crevasse:

A large crack that forms from stresses in the ice. Crevasses can be really deep and are sometimes hidden under the snow.

## Antarctic expeditions:

In 1911, two expeditions were racing to be the first people to the South Pole. One was led by Roald Amundsen and the other by Robert Falcon Scott. Roald beat Robert by only a few weeks. I wonder if we are the first penguins to be in this part of Antarctica.

Strange blue box: ???