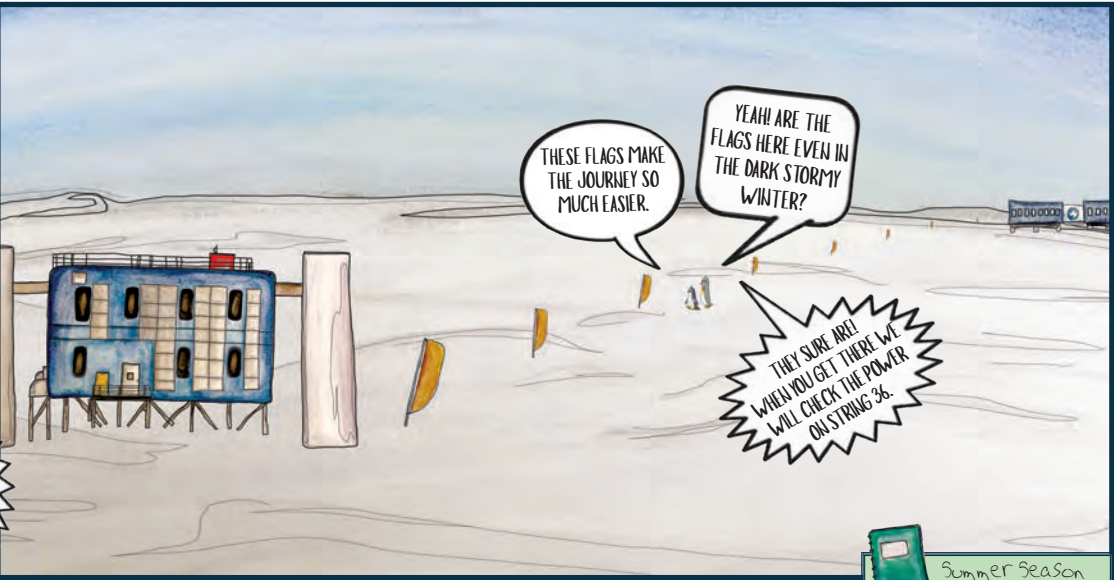


NOVEMBER STARTS THE SUMMER SEASON AT THE SOUTH POLE. MANY PEOPLE ARRIVE, INCLUDING NEW ICECUBE WINTEROVERS, WHO BEGIN THEIR YEARLONG JOB OF TAKING CARE OF ICECUBE.

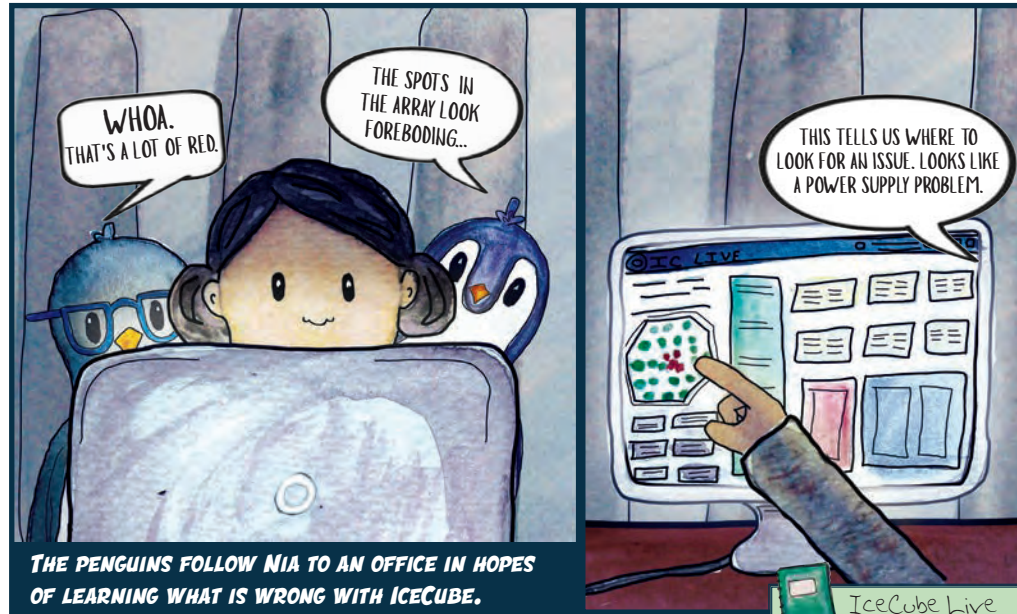


Hercules Aircraft

WINTEROVERS HAVE TO BE READY FOR ANY AND ALL PROBLEMS THAT MIGHT COME THEIR WAY.



Summer Season

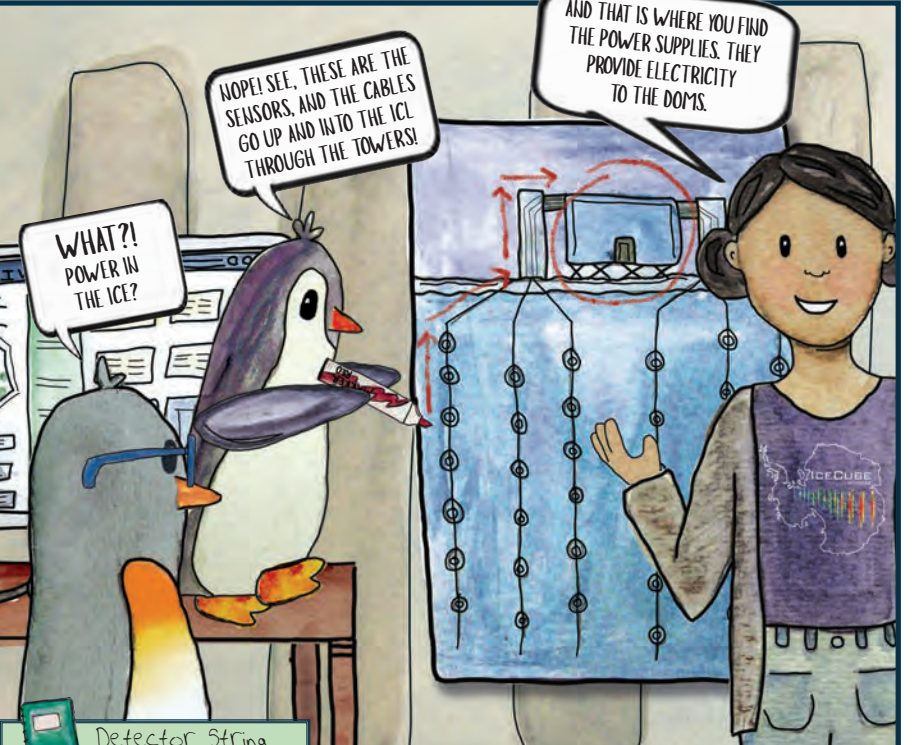


THE PENGUINS FOLLOW NIA TO AN OFFICE IN HOPES OF LEARNING WHAT IS WRONG WITH ICECUBE.

IceCube Live



Equipment Room



Detector String



ROSIE AND GIBBS HEAD TO THE STATION EXIT, EXCITED FOR THEIR FIRST REAL WINTEROVER TASK.



Rosie's Discoveries

Hercules aircraft

The Hercules planes, or "Hercs" as they're called, come and go bringing people and supplies to the Pole between November and February. It is so neat how they can land and take off from the ice! It is always an exciting day when one lands. I want to learn how to park one at the fuel pit.

IceCube Live

There is a ton of information coming from the IceCube detector every minute. IceCube Live is the program that collects and displays all that information. It is a big help to winterovers at the Pole and IceCubers all over the world to see what is happening under the ice.

Detector string

Power and information is carried from the ICH to the in-ice sensors by strings. The strings are in a hexagonal grid and hold 60 sensors each. They go as deep as 2450 m into the ice!

Summer season

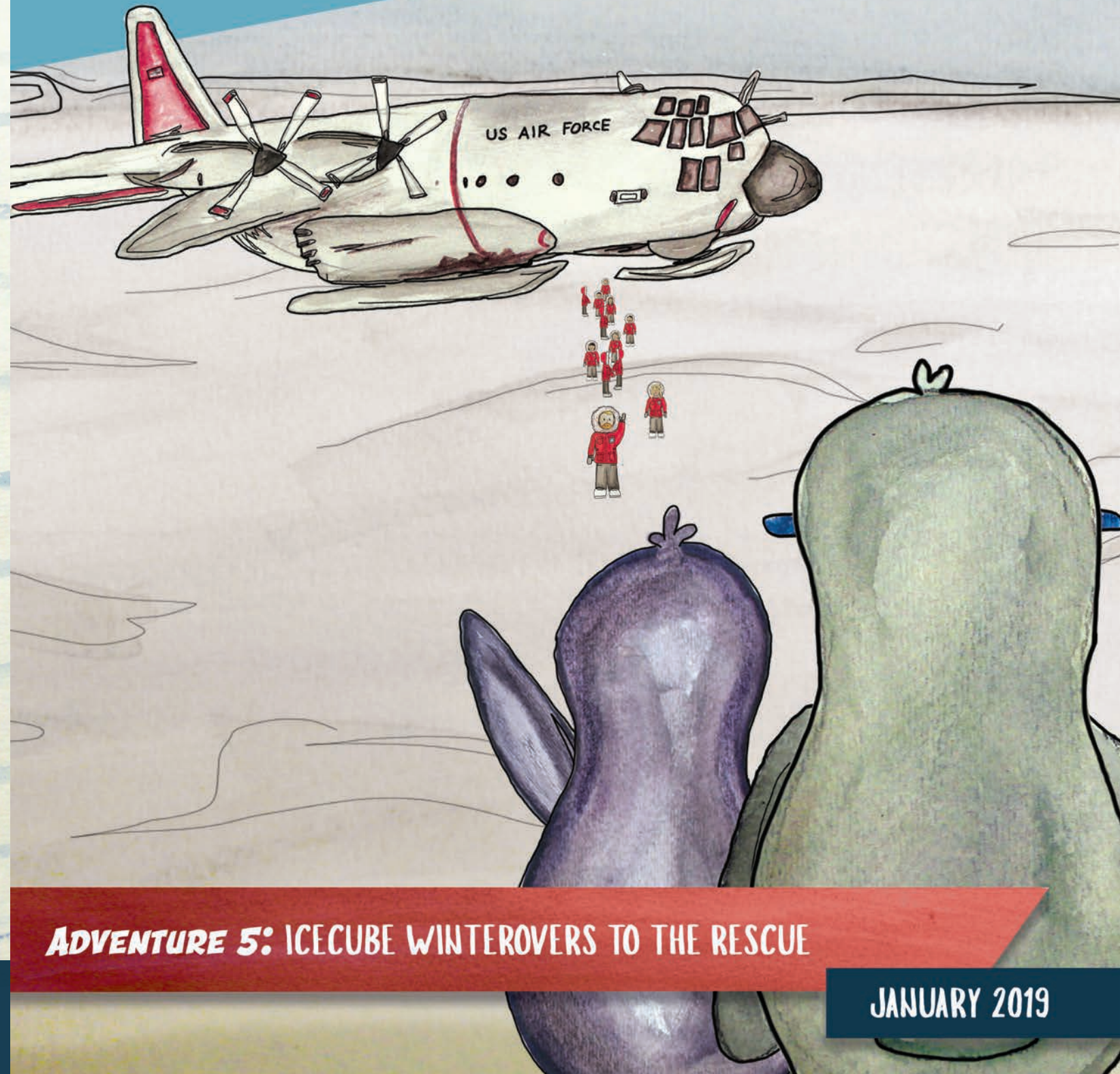
Summer at the Pole is one loooooong day, lasting 6 months. There is only one sunrise and sunset a year! When the sun is up, IceCubers are hard at work while the weather is manageable. When the sun sets, winter comes and the conditions are too harsh for anyone to travel, or be outside for very long.

Equipment room

The ICH is full of equipment. For each string, there is a computer box that contains the power supply and lots of other technical parts needed for the detector to run. I was happy we found the box we were looking for before the weather got bad.

ADVENTURES WITH ROSIE & GIBBS

the lost penguins



ADVENTURE 5: ICECUBE WINTEROVERS TO THE RESCUE

JANUARY 2019

ILLUSTRATIONS BY: Savannah Guthrie

STORY BY: Silvia Bravo Gallart, Jean DeMerit & Savannah Guthrie

ADVISORS: John Kelley, Jim Madsen, Jean Penningcook & Annie E. Schmidt

icecube.wisc.edu

