



January 2024

	SUN	MON	TUE	WED	THU	FRI	SAT
	31	1	2	3	4	5	6
Seeing Double							
Credit: Marc Lacquart , IceCube/NSF	7	8	9	10	11	12	13
Winterovers train for various duties to keep things running smoothly while stationed at the South Pole. Here we see a winterover marshalling an incoming flight carrying cargo and personnel for the summer season. The photo's main "interest," perhaps, is the cleverly staged LEGO scene in the foreground.	14	15	16	17	18	19	20
	21	22	23	24	25	26	27
	28	29	30	31	1	2	3
	4	5	6	7	8	9	10

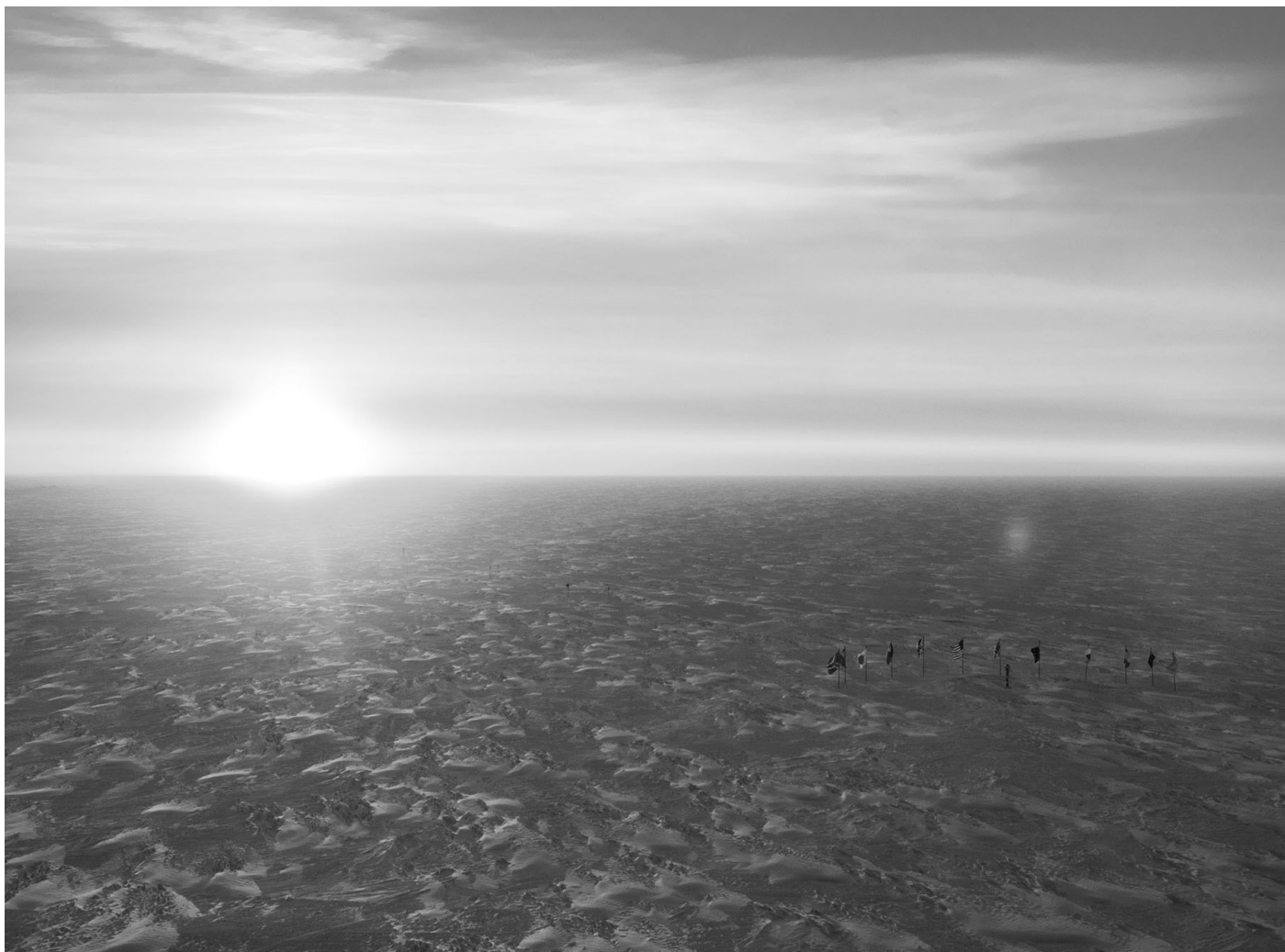




February 2024

	SUN	MON	TUE	WED	THU	FRI	SAT
	28	29	30	31	1	2	3
Let's Go Fly a Kite							
Credit: Marc Jacquart, IceCube/NSF	4	5	6	7	8	9	10
The flags flying at the ceremonial South Pole represent the twelve countries that made up the original signatories of the Antarctic Treaty, signed in 1959, which protects Antarctica as a place for peaceful, scientific explorations. The ceremonial Pole is routinely a great place for photo opportunities but also a good place to just fly a kite.	11	12	13	14	15	16	17
	18	19	20	21	22	23	24
	25	26	27	28	29	1	2
	3	4	5	6	7	8	9

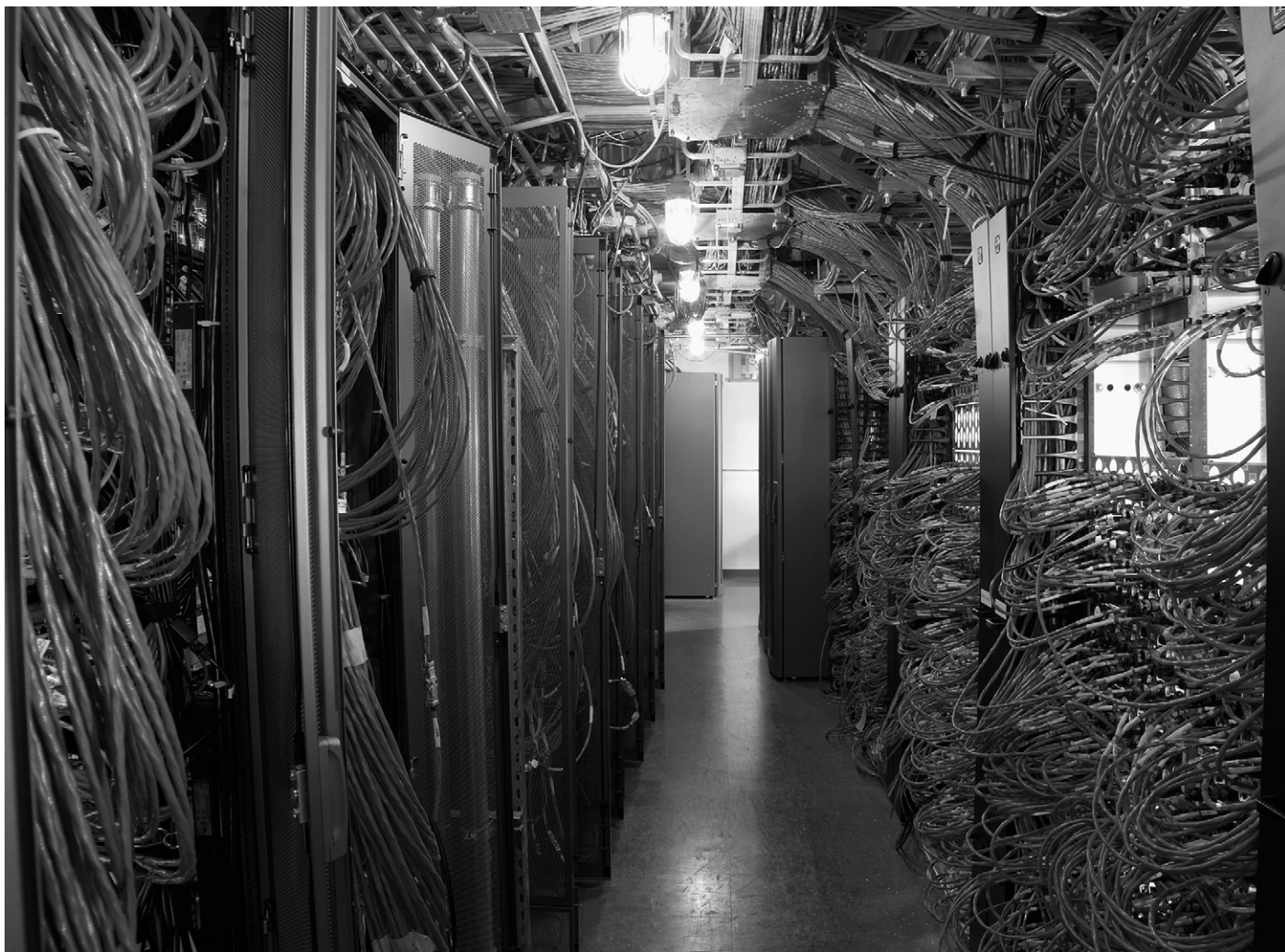




March 2024

	SUN	MON	TUE	WED	THU	FRI	SAT
	25	26	27	28	29	1	2
Sunset at the South Pole							
Credit: Josh Veitch-Michaelis, IceCube/NSF	3	4	5	6	7	8	9
A large, very bright sun sits on the horizon as it sets at the South Pole. This happens only once per year, at the end of March. Before the Pole is engulfed in darkness, there is a period of twilight that lasts for weeks as shadows slowly lengthen and colors change in the sky. In this twilight image, the flags of the ceremonial Pole are barely noticeable.	10	11	12	13	14	15	16
	17	18	19	20	21	22	23
	24	25	26	27	28	29	30
	31	1	2	3	4	5	6





April 2024

	SUN	MON	TUE	WED	THU	FRI	SAT
	31	1	2	3	4	5	6
That's a Lot of Orange							
Credit: Marc Jacquart, IceCube/NSF	7	8	9	10	11	12	13
The IceCube Lab houses the computers that collect data from all the detector's buried sensors. The lab is located approximately a kilometer from the station, and IceCube workers must trek out there whenever hands-on attention is required.	14	15	16	17	18	19	20
	21	22	23	24	25	26	27
	28	29	30	1	2	3	4
	5	6	7	8	9	10	11





May 2024

	SUN	MON	TUE	WED	THU	FRI	SAT
	28	29	30	1	2	3	4
Glorious Skies							
Credit: Yuya Makino, IceCube/NSF	5	6	7	8	9	10	11
Oh, the wonderful views! Thanks to clear weather and near-maximum darkness, the IceCube Lab is seen under an extremely starry sky that includes the Milky Way and some low auroras.	12	13	14	15	16	17	18
	19	20	21	22	23	24	25
	26	27	28	29	30	31	1
	2	3	4	5	6	7	8





June 2024

	SUN	MON	TUE	WED	THU	FRI	SAT
	26	27	28	29	30	31	1
Midwinter Festivities							
Credit: John Hardin, IceCube/NSF	2	3	4	5	6	7	8
Midwinter is an annual celebration held across Antarctica. It comes in the middle (hence the name) of winter on the shortest day of the year and marks the pivot point of the period of continuous darkness inside the Antarctic Circle. The South Pole station galley is shown all decked out for the long-established midwinter feast.	9	10	11	12	13	14	15
	16	17	18	19	20	21	22
	23	24	25	26	27	28	29
	30	1	2	3	4	5	6





July 2024

	SUN	MON	TUE	WED	THU	FRI	SAT
	30	1	2	3	4	5	6
You're a Wizard, Harry							
Credit: Marc Jacquart, IceCube/NSF	7	8	9	10	11	12	13
On a day with a perfectly clear sky, the winterovers were treated to one of the brightest auroras of the season. One of them can be seen practicing their wizardry skills, perhaps inspired by the eight-movie Harry Potter marathon organized by the station. With a swish and flick of the wrist, a bright green aurora is flawlessly cast from a wand.	14	15	16	17	18	19	20
	21	22	23	24	25	26	27
	28	29	30	31	1	2	3
	4	5	6	7	8	9	10





August 2024

	SUN	MON	TUE	WED	THU	FRI	SAT
	28	29	30	31	1	2	3
Snow Angels							
Credit: Marc Jacquart, IceCube/NSF	4	5	6	7	8	9	10
Winterovers are tasked with making sure the IceCube detector is up and running 24/7, and so they must make the trip outside to the IceCube Lab to resolve any hands-on issues. Here, a bright moon illuminates the winterovers as they take a moment to “relax” on a snowdrift.	11	12	13	14	15	16	17
	18	19	20	21	22	23	24
	25	26	27	28	29	30	31
	1	2	3	4	5	6	7





September 2024

	SUN	MON	TUE	WED	THU	FRI	SAT
	1	2	3	4	5	6	7
The Ceremonial South Pole							
Credit: Marc Jacquart, IceCube/NSF	8	9	10	11	12	13	14
Only days away from the official sunrise at the South Pole, the horizon looks striking. In the foreground, the ceremonial South Pole awaits the sun's arrival.	15	16	17	18	19	20	21
	22	23	24	25	26	27	28
	29	30	1	2	3	4	5
	6	7	8	9	10	11	12





October 2024

	SUN	MON	TUE	WED	THU	FRI	SAT
	29	30	1	2	3	4	5
A World of Flags							
Credit: Yuya Makino, IceCube/NSF	6	7	8	9	10	11	12
A winterover walks along a flag line, adjusting the spacing between the flags for summer machine operations. The winterovers rely on flag lines to safely traverse the barren landscape, especially in winter, and so the flags are regularly maintained.	13	14	15	16	17	18	19
	20	21	22	23	24	25	26
	27	28	29	30	31	1	2
	3	4	5	6	7	8	9





November 2024

	SUN	MON	TUE	WED	THU	FRI	SAT
	27	28	29	30	31	1	2
Sun, Halo, and Balloon							
Credit: Marc Jacquart, IceCube/NSF	3	4	5	6	7	8	9
A winterover launches a weather balloon in order to measure the wind, temperature, humidity, and pressure in the atmosphere. A sun halo, caused by light interacting with suspended ice crystals in the atmosphere, provides the perfect backdrop.	10	11	12	13	14	15	16
	17	18	19	20	21	22	23
	24	25	26	27	28	29	30
	1	2	3	4	5	6	7





December 2024

	SUN	MON	TUE	WED	THU	FRI	SAT
	1	2	3	4	5	6	7
New Arrivals							
Credit: Hrvoje Dujmovic, IceCube/NSF	8	9	10	11	12	13	14
Summer at the South Pole means more people arriving at the station. Here, a group of people is seen getting off a ski-equipped Lockheed LC-130 Hercules.	15	16	17	18	19	20	21
	22	23	24	25	26	27	28
	29	30	31	1	2	3	4
	5	6	7	8	9	10	11

