

IceCube Collaboration Governance Document

Revision 9.5, May 2024

Collaboration Objectives

The IceCube Collaboration (the Collaboration) is an organization of scientists who collectively participate in a research program with the IceCube Observatory at the NSF South Pole Amundsen-Scott station. IceCube consists of a surface array, IceTop, and a deep ice array IceCube. Henceforth, IceCube stands for the IceCube Observatory. The primary goal is the study of high-energy neutrinos from cosmic sources, but the program also encompasses a broader array of topics made possible by the IceCube observatory.

Definitions

The Host Institution for the IceCube project is the University of Wisconsin-Madison (UW) with the P.I. defined by the M&O grant to the Host Institution. Responsibilities are defined in the Cooperative Agreement with NSF. The Operations Phase of IceCube is specified as the period when activities are governed by the M&O Cooperative Agreement between UW and the NSF. The Memorandum of Understanding (MoU) governing institutional responsibilities for M&O consists of a single MoU between the host institution and each constituent institution. The International Oversight and Finance Group functions are defined in the Maintenance and Operations Plan (excerpt attached in Appendix D). The organization for the operation of IceCube is shown in the organization chart of Appendix C.

Operation of the IceCube detector is organized within the IceCube Coordination Committee (ICC) chaired by the Associate Director for Science and Instrumentation. The main functions are Detector Maintenance & Operations; Computing and Data Management; Data Processing and Simulation Services; Software; and Calibration, as shown in the Organization chart. Some key positions in the ICC are appointments of the host institution; most positions are filled by collaboration scientists chosen for their expertise by the Chair of the ICC in consultation with the Spokesperson.

Collaboration Membership

The IceCube Collaboration consists of scientists at Collaboration Constituent Institutions. The condition for membership and for institutional recognition is that the group makes a significant contribution to IceCube. Significant contributions will include a contribution to the common fund proportional to the number of Ph.D. scientists in the group as well as contributions to detector operations and data analysis.

The proposed contributions, role in the scientific program, and personnel are to be detailed in the MoU that is updated annually. If an IceCube institution fails to comply with this requirement on two consecutive occasions it will be assumed that the manpower available for IceCube has decreased below a critical level. In this case steps will be taken to declare the institution dormant. The decision will be taken by the ICB upon a proposal presented by the spokesperson, and requires approval by two-thirds of the sum of weighted votes cast. Dormancy implies removal of the institution from the IceCube author list after a delay of one year following the ICB decision. Individuals from dormant institutions can remain on the author list if approved by an ICB vote. Dormant institutions can regain their active status by submitting an application prior to an IceCube Collaboration meeting, where a

representative presents future plans to the ICB. Regaining active status requires approval by two-thirds of the sum of weighted votes cast.

Current members of the Collaboration as of the date of revision of this document come from the institutions listed in Appendix A. (This Appendix also lists the initial institutions of IceCube.) Any scientist or group of scientists may apply to the Spokesperson of the Collaboration for membership of their institution in IceCube. Admission of new institutions requires approval by a two-thirds majority of the IceCube Constituent Institutions, under consideration of the proposed contributions and role in the research program. New institutions are assigned a 5-year probationary period during which the addition of new senior personnel, with the exception of current IceCube collaboration authors, will require approval by the IceCube Collaboration Board. Once an institution's probationary period concludes in good standing, senior personnel who join the member group will automatically be accepted as members of the collaboration. New senior personnel at all institutions are presented to the ICB at the time of their on-boarding.

An individual scientist or a group of scientists may be accepted as associate members of IceCube if they are sponsored by an IceCube collaborating institution to work on a specific aspect of analysis and/or service. The arrangement should be clarified in an MoU that describes the subject in which the associate will participate, the term of association and any other details.

Membership of an individual or Institution may be revoked by the Spokesperson for just cause, e.g. actions detrimental to IceCube. A concurring vote by two-thirds of all Constituent Institutions is required. Only active votes will be counted.

Collaboration Board

1. Functions and Responsibilities

The Collaboration Board is the policy-making entity that guides and governs the scientific activities of the Collaboration. It establishes, and as necessary amends, governance procedures and has oversight and authority over:

- science policy and goals
- membership
- data access
- publication
- representation of IceCube at topical and general conferences
- analysis teams
- education and outreach

The Collaboration Board, through the Collaboration Spokesperson, maintains contact and communication with the Director of Operations at the host institution.

It advises the Director on the detector operation for scientific investigations and maintenance, and participates in the discussion, as articulated by the Director of Operations, of the potential or possible use of the IceCube facility as a resource for new initiatives.

The Collaboration Board ratifies the Collaboration Governance document and may introduce amendments to it.

The Collaboration Board ratifies the Cooperative Agreement between the NSF and Host Institution, and may suggest amendments to it.

The Collaboration Board, during the operation phase of IceCube, advises the Director of Operations on selection of personnel that hold key responsibilities for the Maintenance and Operation of the detector.

Concerns of the Collaboration members are addressed to Collaboration Board members who, when appropriate, bring those before the Collaboration Board for its consideration.

At the request of a Board member the Board may require a detailed verbal, or written, report from the Spokesperson on any action.

2. Membership

Each Collaboration Constituent Institution is represented on the Collaboration Board by at most two members of whom one is voting whereas the other is a non-voting adjunct member. The number of votes per institution depends on number of Ph.D. physicists (see for the key section 6 below).

Early Career scientists in the Collaboration are represented by two additional, at-large, members chosen collectively by Early-Career Collaboration participants. The term of service is two years, not renewable, and the terms overlap - i.e. one new representative is elected every year. Election rules for Early Career scientists are given in [Appendix B](#). Of the two members, one is voting whereas the other is a non-voting adjunct member. Information of who is voting should be given to the Spokesperson before each meeting of the Collaboration Board.

During the IceCube operation phase, the P.I. of the M&O grant from NSF (the IceCube P.I.) and the Associate Director for Science are ex-officio members of the Collaboration Board.

3. Officers

The Collaboration Board is chaired by the Collaboration Spokesperson. The Spokesperson is an ex-officio, non-voting member of the Collaboration Board. The Spokesperson is elected by the Ph.D. members of the collaboration. The election procedure is as follows:

- The Spokesperson appoints two Collaboration members who serve as a nomination commission.
- Nominations are sought from the Collaboration at large. Each constituent Institution may offer any number of candidate nominees.
- The nomination commission notifies each nominee that she/he has been proposed. Within two weeks each nominee shall inform the nomination commission if he/she is willing to be listed as a nominee. All who do so, compose the final slate of viable nominees.
- The Spokesperson is chosen by majority vote of all Ph.D. physicists in the Collaboration.
- If none of the candidates gets more than 50% of the votes in the first round the choice between the two names with the most votes is decided in a second round.

Each nominee is urged to prepare a statement that contains her/his assessment of the state of IceCube, goals and plans for action to be taken during his/her tenure as Spokesperson. The

text of the statement should accompany the nominee's acceptance notice to the nomination commission who will distribute it with the ballot to the Collaboration membership.

The Spokesperson may select a Deputy Spokesperson. The Board ratifies the choice. The Deputy performs the duties of the Spokesperson when necessary if the Spokesperson is unable to do so. The Deputy is an ex-officio, non-voting member of the Collaboration Board. If the Spokesperson or Deputy is a regular Collaboration Board member, a replacement is chosen by the affected Institution. The period of office of the Spokesperson and the Deputy Spokesperson is two years, renewable - but at most four consecutive years.

The Spokesperson, as Collaboration Executive

- organizes and chairs Collaboration Board meetings
- during the IceCube operations phase is the interface between the collaboration Board and the Director of Operations at the Host Institution, communicating with the Director on behalf of the Collaboration Board.
- arranges general Collaboration meetings
- speaks for the Collaboration in interaction with the scientific community
- speaks for the Collaboration in interaction with the general public
- selects members of Collaboration advisory committees subject to concurrence by Collaboration Board majority vote
- communicates with the International Oversight and Finance Group (see Appendix D) on behalf of the Collaboration Board.
- calls for and oversees formal votes on particular issues

4. Executive Committee

The Spokesperson, in consultation with the Collaboration Board and, with the P.I. and the Director of Operations, appoints and chairs an Executive Committee of the Collaboration Board. The term of the Executive members is two years, coinciding with the term of the Spokesperson. The job of the Executive Committee is to advise the Spokesperson in proposing actions to the Collaboration Board and in making interim decisions. The members of the Executive Committee should represent major groups, functions and competences within the Collaboration.

5. Meetings

The Collaboration Board meets in the period coincident with each general collaboration meeting. The meetings may be scheduled before, during or after the collaboration meeting, and may be held via teleconference and/or in person, as conditions may apply. More frequent telephone or video conferences may be called by the Spokesperson, with normally two weeks prior notice having been given Board members. At a minimum, representation of two-thirds of all Constituent Institutions is required to constitute a quorum. The Spokesperson will appoint a secretary to each Collaboration Board Meeting for writing the minutes. The minutes will include all decisions that were taken. Minutes will be posted on the IceCube private www site within one week following the meeting, following approval by the Collaboration Board members.

6. Voting procedure

In general, matters before the Collaboration Board are settled by consensus of its members. At a meeting of the Collaboration Board, a show of hands will be called for to determine if there is consensus. If there is no consensus, a formal vote will be ordered by the Spokesperson. A formal poll can also be requested by a Collaboration Board member. In both cases, the polling will be done by Email within one week of the meeting. Each institution has one vote weighted by a factor depending on the number of affiliated PhD physicists. The weight is equal to the square root of the number of PhD physicists, rounded to the nearest integer. The weights are fixed once per year. In case of a tie vote, the Spokesperson casts a vote. Only active votes will be counted. Abstentions or absences do not count. Results will be announced to the Collaboration Board by the Spokesperson. All votes will be open, except where persons are concerned. The voting procedure for the Spokesperson is described in section 3.

7. Education and Outreach

The IceCube collaboration collectively and individually participates in and provides support for efforts in public outreach and education on subjects related to its science. The Spokesperson, with Collaboration Board concurrence, responds to requests for information from the media or may take the initiative providing material. The Director of Operations, with Collaboration Board concurrence, appoints a Collaboration member to lead an education program for students and teachers at all levels. The Collaboration maintains coordination and cooperation with other ongoing education initiatives. All new scientific material to be released for purposes of public outreach or education containing other than previously published data or results must have been agreed upon by the Collaboration Board.

8. Collaboration Policies and Procedures

Meetings

Collaboration meetings are held at least two times in a year. Locations are distributed among Collaboration Constituent institutions, chosen by the Spokesperson, and ratified by Board concurrence. The hosting institution is responsible for physical meeting arrangements. Agendas are set by the Spokesperson together with the hosting institution, the Analysis Coordinator, the working group leads and the operations managers (i.e. members of the ICC), with concurrence of the Collaboration Board.

Data Reduction and Analysis

Raw, unfiltered data written to tape at Pole are transported to the UW data center for archival storage unless directed otherwise by the Collaboration Board. Filtered data are transmitted daily via satellite link to the UW data center and stored on disk. Additionally, the filtered data will be copied via internet to DESY and stored on disk as a second official copy.

All current IceCube members have access to archived data. Associate membership in IceCube gives the Associate access to IceCube data and software for the sole purpose of pursuing a particular analysis. The analysis should augment the science that can be done with IceCube alone.

The Collaboration Board consents to the appointment of Collaboration members as Analysis Coordinator, Deputy Analysis Coordinator, Technical Coordinator, and Working Group

conveners. Duties, terms and appointment procedures for the Analysis Coordinator, Deputy Analysis Coordinator, Technical Coordinator, and Working Group conveners are described on Appendix C.

It is the intention of the Collaboration to place the data in the public domain as soon as it is reasonable to do so from a scientific point of view (see appendix E). The Collaboration Board shall determine rules for access to the data.

Detector operations and monitoring

The Spokesperson with Collaboration Board concurrence appoints a Collaboration member to organize and lead a group responsible for detector Monitoring, Maintenance and Calibration. The term of service is one year, renewable. Detector monitoring is a collaboration-wide shared responsibility.

9. Topical and General Conference Presentations

The Spokesperson, with concurrence of the Collaboration Board, appoints a Collaboration member to chair a Speakers Committee. The period of office of the chair is 2 years, renewable – but at most 4 consecutive years. The duration is counted from the day the chair assumes office, independent of possible prior Speakers Committee membership. The designated chairperson chooses at least three other members of this Speakers Committee. At least one of the Speakers Committee members must be an Early Career Scientist. The term of the members of the Speakers Committee is 2 years, renewable – but at most 4 consecutive years. A later re-accession, with the consensus of the chair, is possible after a break of at least 2 years. A rapid decision channel (chair + Spokesperson) can be enabled if there is insufficient time to involve the whole committee. Invitations to present Collaboration results, or performance reviews, are submitted to the Speakers Committee. The Speakers Committee chooses the speaker.

The Speakers Committee maintains records of conference presentations. The conference organization is notified by the Spokesperson of the identity of the nominated speaker and the subject of the talk and its approval is sought.

In order to present previously unreported data and/or results approval must be obtained from the Spokesperson, with Collaboration Board concurrence. The Spokesperson has the right to hold new results in order to approve final text, figures, and tables.

Transcriptions of verbatim reports of approved presentations to be included in conference proceedings are posted on the IceCube www site not later than two weeks before the editorial deadline to allow review, comments and suggestions for revisions by the Collaboration. Such controls do not normally apply to colloquium or seminar talks at members' home or other institutions on personal invitation but the Analysis Coordinator must be made aware of any new results which differ from results already public or might be controversial. For presenting such results Analysis Coordinator approval must be obtained.

Many papers published by the collaboration present data analysis conducted by IceCube PhD students as part of their thesis. In such cases, although the thesis itself is not a collaboration publication, the student's analysis will usually have undergone the process for internal review and approval laid out above. However, in unusual circumstances it may be necessary for a student to graduate before the analysis has matured sufficiently for collaboration review and approval. Such cases will be governed by the following rules.

The analysis coordinator and the convener(s) of the relevant working group(s) shall work with the student and the student's advisor to devise a solution enabling the student to graduate in a timely manner while preserving the collaboration's ability to conduct an unbiased analysis of the data. The student and the student's advisor are responsible for alerting the convener(s) and analysis coordinator to the situation with sufficient time to find an acceptable solution before the student's thesis must be completed.

The details of the solution will vary depending on the nature of the analysis and the requirements of the student's institution, but could include use of pseudo-data, a public or reduced data set, an embargo or an agreement not to publicly distribute results until the collaboration's result is published, or other methods. In any case, the working group convener(s) shall ensure that the results presented in the thesis do not bias any ongoing or planned collaboration analysis. The student and the student's advisor are responsible for cooperating with the convener(s) in this effort.

The student's thesis must make clear that the results presented are the student's own and are not endorsed by the IceCube collaboration, and the limitations of the analysis should be presented. Unless embargoed, the thesis shall not include sufficiently detailed data to enable independent analysis prior to the publication of the collaboration's own analysis.

Reports in proceedings are normally bylined by a single name (the presenter's) followed by "for the IceCube Collaboration". The complete author list in alphabetic order should if possible be included. Otherwise a reference is made to the complete author list elsewhere. Deviations from this rule are possible on a case by case basis but require justification. Requests are handled by the Publication Committee. The Collaboration Board constructs the author list from compilations provided it by Constituent Institution representatives. Others who have contributed to a particular effort may be included as authors. Individual requests not to be included as authors are acceded to without prejudice. Any Constituent Institution representative may request a variance from the default listing to allow a conference presentation authored by a subset of members and others who have contributed to a particular special (usually technical) subject. A concurring vote by two-thirds of all Constituent Institutions is required for approval. Only active votes will be counted.

10. Publications

The Spokesperson, with concurrence of the Collaboration Board, appoints a Collaboration member to chair a Publications Committee. The period of office of the chair is 2 years, renewable – but at most 4 consecutive years. The duration is counted from the day the chair assumes office, independent of possible prior Publication Committee membership. The designated chairperson chooses nine other members of this Publications Committee. The term of the members of the Publication Committee is 2 years, renewable – but at most 4 consecutive years. A later re-accession with the consensus of the chair is possible after a break of at least 2 years.

The Publication Committee oversees and coordinates submission of papers and proceedings reports in coordination with the analysis coordinator and the working group leaders as described in Appendix C.

Results are to be submitted for publication in refereed journals. Drafts of research results are prepared by the analysis teams; drafts of papers on technical matters are prepared by the cognizant individuals. The internal review procedure is described in Appendix C. Journal articles are bylined by the full author list in alphabetical order. The Collaboration Board constructs the author list from compilations provided it by Constituent Institution representatives. As a rule collaborators may become authors six months after joining the collaboration. They are normally removed from the list one year after leaving. This period may be extended in special cases of former collaborators who contributed essential effort to the construction of IceCube. Others who have contributed to a particular effort may be included as authors. Individual requests not to be included as authors are acceded to without prejudice. Any Constituent Institution representative may request a variance from the default listing to allow submission of a paper for publication authored by a subset of members and others who have contributed to a particular special (usually technical) subject. A concurring vote by two-thirds of all Constituent Institutions is required for approval. Only active votes will be counted.

In certain circumstances, an IceCube institution may be prevented from publishing by non-science-related policies set by the said institution or by the country in which the institution is based. IceCube shall make publication decisions independently of national or institutional politics not related to science. The spokesperson and the chair of the Publications Committee shall be informed by the appropriate institutional lead of any publication, including proceedings and peer-reviewed publications, that conflicts with the host country or institutional policies. The institutional lead will promptly inform their group members of the conflict between local institutions or country policies with an IceCube publication.

Associate members only appear on the author list for the publication(s) directly related to their analysis and agree not to publish independently results based on private IceCube software or data.

11. Ph.D. Research

Research topic assignments are the responsibility of the students and faculty supervisors. Discussions among faculty supervisors and Collaboration Board members are encouraged to avoid serious overlaps in subject matter and/or analysis methodology. The Spokesperson maintains a list of completed and current theses. Texts of theses are posted to the IceCube private www site and may be posted at the institution www site. Titles and author names are posted on the official IceCube www site.

12. Amendments

This document will be reviewed for proposed amendments as necessary. Any member of the collaboration may bring such proposals to the Collaboration Board's attention. Proposed amendments to this charter will be considered during regular meetings of the Collaboration Board. A concurring vote by two-thirds of all Constituent Institutions is necessary to pass an amendment. Only active votes will be counted.

Appendix A: IceCube Institutions

(Ordered alphabetically according to location)

- a. Initial IceCube Institutions (application 1999 to NSF):
 - i. CTSPS, Clark-Atlanta University, Atlanta, USA
 - ii. Southern University and A&M College, Baton Rouge, USA
 - iii. Lawrence Berkeley National Laboratory, Berkeley, USA
 - iv. University of California-Berkeley, Berkeley, USA
 - v. Université Libre de Bruxelles, Brussels, Belgium
 - vi. University of California-Irvine, Irvine, USA
 - vii. University of Kansas, Lawrence, USA
 - viii. University of Wisconsin, Madison, USA
 - ix. Universität Mainz, Mainz, Germany
 - x. Bartol Research Institute, University of Delaware, Newark, USA
 - xi. University of Pennsylvania, Philadelphia, USA
 - xii. Institute for Advanced Studies, Princeton, USA
 - xiii. Stockholm Universitet, Stockholm, Sweden
 - xiv. Uppsala Universitet, Uppsala, Sweden
 - xv. BUGH Wuppertal, Wuppertal, Germany
 - xvi. DESY-Zeuthen, Zeuthen, Germany

- b. IceCube Institutions as of May 2024:
 - i. III Physikalisches Institut, RWTH Aachen University, Aachen, Germany
 - ii. Adelaide School of Chemistry and Physics, University of Adelaide, Adelaide, Australia
 - iii. Dept. of Physics and Astronomy, University of Alabama, Tuscaloosa, USA
 - iv. Dept. of Physics and Astronomy, University of Alaska Anchorage, Anchorage, USA
 - v. CTSPS, Clark-Atlanta University, Atlanta, USA
 - vi. School of Physics and Center for Relativistic Astrophysics, Georgia Institute of Technology, Atlanta, USA
 - vii. Dept. of Physics, Southern University, Baton Rouge, USA
 - viii. Dept. of Physics, University of California, Berkeley, USA
 - ix. Lawrence Berkeley National Laboratory, Berkeley, USA
 - x. Institut für Physik, Humboldt-Universität zu Berlin, Berlin, Germany
 - xi. Fakultät für Physik & Astronomie, Ruhr-Universität Bochum, Bochum, Germany
 - xii. Université Libre de Bruxelles, Brussels, Belgium
 - xiii. Vrije Universiteit Brussel, Brussels, Belgium
 - xiv. Dept. of Physics, Chiba University, Chiba, Japan
 - xv. Dept. of Physics and Astronomy, University of Canterbury, Christchurch, New Zealand
 - xvi. Niels Bohr Institute, University of Copenhagen, Copenhagen, Denmark
 - xvii. Dept. of Physics, University of Maryland, USA
 - xviii. Dept. of Physics and Center for Cosmology and Astro-Particle Physics, Ohio State University, Columbus, USA
 - xix. Dept. of Physics, TU Dortmund University, Dortmund, Germany
 - xx. Particle Physics at Drexel, Drexel University, Philadelphia, PA, USA
 - xxi. Dept. of Physics, University of Alberta, Edmonton, Alberta, Canada
 - xxii. Friedrich-Alexander-Universität Erlangen-Nürnberg, Erlangen, Germany

- xxiii. Dépt. physique nucléaire et corpusculaire, Université de Genève, Geneva, Switzerland
- xxiv. Dept. of Subatomic and Radiation Physics, University of Gent, Gent, Belgium
- xxv. Dept. of Physics and Astronomy, University of California, Irvine, USA
- xxvi. Dept. of Physics & Astronomy, Nevada Center for Astrophysics and, University of Nevada, Las Vegas, USA
- xxvii. Dept. of Physics and Astronomy, University of Kansas, Lawrence, USA
- xxviii. Dept. of Physics, University of Wisconsin, Madison, USA
- xxix. Institute of Physics, University of Mainz, Mainz, Germany
- xxx. Dept. of Physics, Marquette University, Milwaukee, WI, USA
- xxxi. Dept. of Physics, Mercer University, Macon, GA, USA
- xxxii. Massachusetts Institute of Technology, Cambridge, MA, USA
- xxxiii. Exzellenzcluster Universe, Technische Universität München, Munich, Germany
- xxxiv. Bartol Research Institute and Department of Physics and Astronomy, University of Delaware, Newark, USA
- xxxv. Department of Physics and Astronomy, Michigan State University, East Lansing, MI, USA
- xxxvi. Dept. of Physics, University of Oxford, Oxford, UK
- xxxvii. Dept. of Physics, University of Wisconsin, River Falls, USA
- xxxviii. Dept. of Physics, South Dakota School of Mines and Technology, Rapid City, SD, USA
- xxxix. Department Of Physics and Astronomy, University of Rochester, Rochester, NY, USA
 - xl. Oskar Klein Centre and Dept. of Physics, Stockholm University, Stockholm, Sweden
 - xli. Dept. of Physics and Astronomy, Stony Brook University, Stony Brook, NY, USA
 - xlii. Dept. of Physics, Pennsylvania State University, University Park, USA
 - xliii. Dept. of Physics and Astronomy, Uppsala University, Uppsala, Sweden
 - xliv. Dept. of Physics, University of Wuppertal, Wuppertal, Germany
 - xlv. Dept. of Physics, Yale University, New Haven, CT, USA
 - xlvi. DESY, Zeuthen, Germany
 - xlvii. Dept. of Physics, Engineering Physics, and Astronomy, Queen's University, Kingston, Ontario, Canada
 - xlviii. Universität Münster, Münster, Germany
 - xlix. Institute for Astroparticle Physics, Karlsruhe Institute of Technology, Karlsruhe, Germany
 - l. Dept. of Physics, Loyola University Chicago, Chicago, IL, USA
 - li. Dept. of Physics, Harvard University, Cambridge, MA, USA
 - lii. Dept. of Physics & Astronomy, University of Utah, Salt Lake City, UT, USA
 - liii. Dept. of Physics & Astronomy, University of Padova, Padova, Italy
 - liv. Institute of Physics, Academia Sinica, Taipei City, Taiwan
 - lv. Centre for Cosmology, Particle Physics and Phenomenology – CP3, Université Catholique Louvain, Louvain-la-Neuve, Belgium
 - lvi. Department of Physics, Sungkyunkwan University, Seoul, Republic of Korea
 - lvii. Department of Physics, Chung-Ang University, Seoul, Republic of Korea
 - lviii. Columbia Astrophysics and Nevis Laboratories, Columbia University, New York, NY, USA

Appendix B: IceCube Early Career Scientist Elections

- a. **Definition of IceCube EC Scientist:** An Early Career scientist is a member of the IceCube collaboration who has received their Ph. D. within 7 years of the most recent past January 1st, but who has not received an assistant professor or tenured position; or who is a graduate student who has been on the author list for two years.

- b. **Election Oversight Committee:** The EC representatives will annually and prior to the elections appoint a committee of two members taken from the entire collaboration, excluding persons eligible, to oversee the election.
- c. **Nominations for EC Representative:** The current year's representatives will solicit nominations collaboration-wide for EC representatives. These nominations will be collected by the members of the oversight committee and posted. Self-nomination is permitted. Only Early Career scientists who have received their Ph. D. can be nominated.
- d. **Voting:** Each EC scientist possesses one vote. The vote is sent to the oversight committee. One is allowed to vote for one's self. Votes are counted privately by the oversight committee. The person receiving the top vote count will be announced by this committee as the new EC scientist representative. In the event of a tie, a tie-breaking round of voting with the ballot containing just the tie-holders will be held.

Appendix C: IceCube Maintenance, Operations and Data Analysis Plan

This document sets forth the plan for the organization and implementation for M&O and Data Analysis during the operations phase of IceCube.

M&O and Physics Analysis

- Planning Documentation
- Analysis Coordination
- Internal review Process
- Talks

Planning Documentation

Planning documentation is composed of this document in its entirety, which lays out the plan for M&O and data analysis of IceCube data. This plan will be reviewed by the IceCube Director of Operations and the IceCube collaboration and once approved will be implemented. Approval and/or modification requires the data analysis plan to be accepted by:

1. IceCube PI
2. IceCube Collaboration Spokesperson
3. IceCube Director of Operations
4. IceCube Collaboration Board

This document should not conflict with the IceCube collaboration governance document. If there are any conflicts the collaboration governance document takes precedent.

Analysis Coordinator and Deputy Analysis Coordinator

a) Selection of Analysis Coordinator and Deputy Analysis Coordinator

The procedure for selecting the Analysis Coordinator is by appointment from the Spokesperson with concurrence of the Collaboration Board. The Spokesperson appoints, with concurrence of the Collaboration board, the Deputy Analysis Coordinator. When the term of service of the Analysis Coordinator expires, the Deputy Analysis Coordinator normally rotates into the role of Analysis Coordinator.

b) Term of Analysis Coordinator

The term of the Analysis coordinator will be 18 months non-renewable.

c) Term of the Deputy Analysis Coordinator. The term of the Deputy Analysis Coordinator will be 18 months, non-renewable.

d) Responsibilities of Analysis Coordinator

The responsibilities of the analysis coordinator are the overall organization and oversight of the working groups and physics analysis of the IceCube data. Specifically the Analysis Coordinator will:

1. Have oversight of the physics analysis
2. Aid in defining the physics working groups
3. Aid in selection of working group leaders
4. Have input on internal review processes for publications and talks
5. Have input on the distribution of talks
6. Have oversight of analysis documentation

e) Responsibilities of the Deputy Analysis Coordinator. The Deputy Analysis Coordinator will assist the Analysis Coordinator as appropriate.

Technical Coordinator

The technical coordinator is appointed by the Spokesperson with concurrence of the Collaboration Board. The technical coordinator serves a term of two years that can be renewed for a maximum of one term. The technical coordinator is responsible for

- a) Co-leading, with the ICC chair, the Weekly Technical call (aka Tuesday call)
- b) Overseeing the approval of preliminary technical material for conferences at the Weekly Technical Call
- c) Overseeing the approval of the outline of technical papers at the Weekly Technical Call
- d) Coordinating with the analysis coordinator on the presentation of technical papers and technical material for conferences at the Analysis Call.

Working Groups

a) Preliminary list of working groups

Working groups are organized a) according to event topologies and the related filter and reconstruction methods and b) according to physics topics. Topology-driven groups can be, for instance:

1. Muons
2. Cascades

3. Hybrid events
4. ...

with the physics topics such as AGN, GRB, WIMPs etc... as subcategories in each working group with the same physics topic across groups. A possible grouping according to physics topics would be:

1. Diffuse cosmic and atmospheric neutrinos
2. Point Source Searches
3. GRB neutrinos
4. neutrinos from WIMP annihilation
5. Cosmic ray studies
6. Exotic particles like magnetic monopoles or Q-balls
7. MeV neutrinos from Supernova bursts
8. Extremely High Energy Phenomena (EHE)

with detector and reconstruction methods as tools to be developed across different working groups. Definition of groups will be kept dynamically, with the list above representing the 2010 status.

b) Selection of Working Groups & Group Leaders

The Analysis Coordinator will coordinate and implement the analysis effort for the IceCube detector in order for it to accomplish its scientific mission. The analysis coordinator, with input from the entire collaboration, will determine the physics benchmarks and processes and organize physics working groups to ensure that these processes are measured. The Analysis Coordinator together with the Spokesperson will select the working group leaders with input from the IceCube collaboration and IceCube Director of Operations. The term of office of a working group leader is 2 years, renewable.

c) Responsibilities at Working Group Level

The physics working group leaders have direct responsibility for organizing the individual data analyses of the IceCube detector. They will:

1. Organize their physics working group
2. Define & verify standard datasets for their particular physics processes
3. Verify the operation and performance of the IceCube detector, primarily as it pertains to their physics processes of interest
4. Document the physics analysis and approved results with memos
5. Document analysis tools with memos
6. Place memos on Docushare for collaboration access and maintain the Docushare areas related to their working group
7. In addition to memos on Docushare, maintain a (possibly separate) web page that describes the status of the WGs activities
8. Approve standard results from their group to be submitted to the collaboration board for publication and presentation.
9. Request a paper committee for journal publication of approved results

The people within a physics working group should generally be organized by the working group leader, with a mailing list established. However, all physics working group activity is

open to the entire collaboration at any time. Regular meeting times and activities should be established whenever possible to encourage all who are interested to be able to plan on participation. The working groups are encouraged to schedule regular biweekly teleconferences and/or videoconferences.

Internal Review Process

Internal review is the process by which the IceCube collaboration will assure uniform and high standards for the publication and communication of physics results to the community. Analyses of IceCube data and preparation of physics results require three levels of approval:

1. Approval of analysis before application to data samples
2. Approval as preliminary result for communication at conferences and talks
3. Approval of final results for publication in refereed journals

a) Approval of analysis

The IceCube collaboration requires that precautions are taken that prevent the analyzer from biasing the analysis results toward their own preconceptions while their analysis is under development. Physics working groups are charged with ensuring that analyses are developed in an unbiased manner through the application of the appropriate techniques (e.g. blindness).

Analyses undergo review by at least two dedicated reviewers, one working group appointed, and one analysis coordinator appointed. While all collaboration members are encouraged to review and comment on analyses, the reviewers are charged to follow the analysis through the:

1. Review and approval in the working group.
2. Presentation, review and approval at the weekly analysis call.
3. Initial presentation of results at the weekly analysis call.

A period of at least two weeks is required between the first presentation of an analysis for review at the weekly analysis call before analysis approval can be granted to allow sufficient time for collaboration review. Review and approval of the working group is granted by the working group convener(s) and final analysis approval is granted by the analysis coordinator.

b) Approval of preliminary results for talks

For approval of preliminary results to be disseminated to the community at scientific talks and conferences the following must happen:

1. Approval by physics working group.
2. Presentation at two consecutive weekly analysis calls where approval is sought from the collaboration.
3. Approval by the Analysis Coordinator.

Normally, a memo or wiki page with supporting information should be disseminated to the collaboration no less than two weeks before the decision on the analysis call.

Upon approval, the result becomes an official preliminary result that is available for use in talks and conferences by any collaboration member. The result will be placed in a common collaboration area on the IceCube web pages by the physics working group.

4. Approval of preliminary plots and figures of technical nature.

Technical plots that result from significant analysis work require approval for their presentation at conferences. An example of a technical plot that requires approval is “Uncertainty of the relative DOM efficiency” (result of a flasher data study). An example of a technical plot that does not require approval is the “Charge spectrum for a PMT”.

The approval of technical plots follows this procedure:

1. Approval by a working group. If no working group is appropriate for the technical topic, this step may be waived by the Technical Coordinator.
2. Presentation at two consecutive Weekly Technical Calls (aka Tuesday Calls) where approval is sought from the collaboration.
3. Concurrent with presentation at the Weekly Technical Call, proposed material is presented once at the Analysis Call (aka Thursday Call).
4. Approval by the Technical Coordinator.

Normally, a memo or wiki page with supporting information should be disseminated to the collaboration no less than two weeks before the decision on the technical call.

Upon approval, the result becomes an official preliminary result that is available for use in talks and conferences by any collaboration member. The result will be placed in a common collaboration area on the IceCube web pages by the working group.

c) Publication of papers

The publication of a result in a paper is initiated within a physics working group. The results to be published must be approved by the collaboration as described above. An outline for the paper will have been presented and discussed on the weekly analysis call for approval by the collaboration. Once a draft of the paper exists, the working group leader(s) will contact the chair of the publication committee to jointly appoint a referee panel consisting of one working group internal expert and one collaboration member from outside the working group. The panel will be led by a publication committee member. The task of the referee panel will be to review the draft and see to it that any remaining physics issues are resolved. Once the draft is deemed mature, the referee panel (extended at this stage to include an additional collaboration member) then oversees and approves the steps 3-6 listed below, leading to journal submission.

1. A paper outline is created and approved within the physics working group, outlining the paper contents, key figures and conclusions being drawn.
2. The paper outline is presented at the weekly analysis call, and 1 week is permitted for comments and discussion before the paper outline is approved.
3. The mature draft of the paper is sent to the collaboration. Two weeks are allowed for all comments on the paper. The paper, the comments, and answers to the comments are all to be posted on the paper’s webpage.

4. When the collaboration review results in substantial requested changes to the paper, a new version of the paper that addresses these changes will be posted to the paper's webpage and circulated to the collaboration. This may result in an extension to the original two week review period.
5. When the referee panel is satisfied that questions and comments have been satisfactorily addressed, the final draft of the paper is presented to the collaboration for approval.
6. The publication committee considers the paper for submission. The decision to submit is made by the Spokesperson and the chair of the publication committee.

Technical papers follow a very similar path as steps 1-6 above. The differences are:

- A. Authors are expected to initiate a paper outline approval at technical or a physics working groups. If no appropriate working group exists, with the Technical Coordinator consent, this can be initiated at Technical Weekly Call (aka Tuesday Call).
- B. Collaboration review and approval of technical paper outlines happens in 2 consecutive Technical Weekly calls. In concurrence with the presentations at the Technical Calls, there will be one presentation at the Analysis Call.

d) Unusual physics topics or topics of a general nature

In the event of an analysis that does not fall within a physics working group, the analysis coordinator will contact the chair of the publication committee to jointly appoint a referee panel.

A topic of a general nature or a physics topic which should be dealt with in publication but is not being addressed can be brought before the Collaboration Board by the Spokesperson, the chair of the publication committee and/or the analysis coordinator. The Collaboration Board appoints an individual (or individuals) responsible for producing a paper outline followed by a draft paper and if necessary for performing the analysis.

e) Public list of internal reports

An internal report repository will be maintained. Internal reports can be of any nature pertaining to IceCube construction, operation, data analysis, etc. Internal reports can be authored by any IceCube collaboration member. The title, report number, authors, and abstract of the internal reports can be made public on an IceCube webpage. Authors of internal reports will be listed alphabetically. The publications committee will review the title, authors, and abstract so that they are suitable for public use. The publications committee will verify that the content of the report matches the work described in the title, and abstract. All IceCube members who conduct data analysis are encouraged to post their analysis memos (aka analysis wiki) as internal reports.

f) Circumstances requiring express analysis

If a case arises that would require an express analysis of IceCube data in order to increase the impact in a timely way (e.g. A strong flaring object such as occurred for the "naked-eye" GRB) the Analysis Coordinator and/or Spokesperson have the authority to circumvent the

normal time periods for review. The Analysis coordinator and Spokesperson can at their discretion ask for concurrence from the executive committee and/or ICB.

g) Publication under exceptional circumstances

In exceptional circumstances, e.g., to increase the impact in a timely way, the Spokesperson and the Publications Committee Chair can appoint an editor or editors to lead the drafting of a publication. A plan and intended timeline for journal submission will be developed and presented to the ICB. Any ICB member will be able to ask for a vote on the formulated plan of action. The collaboration will subsequently be informed of the procedure. Analyzers will collaborate with the editor(s) in preparing the draft. During the drafting, the editor(s) or analyzers will regularly present updates at the analysis call, regarding both the contents of the paper and the timeline.

Non-IceCube publications by IceCube members

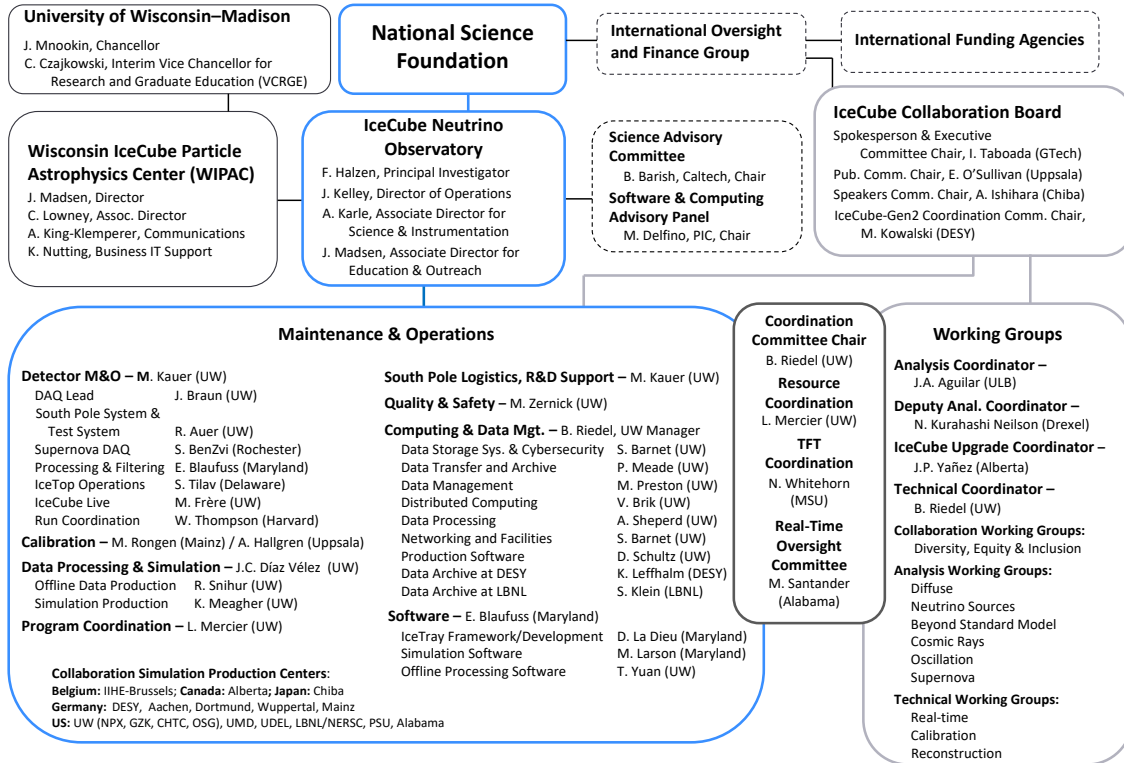
Collaboration members authoring or co-authoring publications which relate to IceCube (including, but not limited to, publications that use public or non-public event-by-event information, that rely on internal discussions within IceCube, or that use IceCube infrastructure (hardware or software)) must submit to the IceCube Publication Committee the paper outline as early as possible and the manuscript no later than a week prior intended submission to archive or journal. The Publication Committee may propose to the ICB that a full IceCube collaboration author list and normal IceCube review procedure is required. Submission of the paper without approval from the Publication Committee may result in imposed sanctions on collaboration privileges as determined by the ICB.

Talks

The policy on talks and presentations and on the speakers committee is set forth in section 9.

IceCube M&O Organization

IceCube Collaboration Governance Document



October 2, 2023

Appendix D: International Oversight and Finance Group - IOFG

The International Oversight and Finance Group (IOFG) is a committee created in 2004 to provide oversight and financial support for the IceCube Neutrino Observatory (including Construction phase, Maintenance & Operations and Research phases). The Group organizes annual oversight reviews of the operations and meets annually to discuss detector performance and physics. The Group also sets policies for receiving periodic progress reports on all aspects of the detector operation and by all the performers in the collaboration, and for conducting external reviews when appropriate.

Membership

A representative of the National Science Foundation chairs the IOFG. Membership is comprised of representatives of the funding agencies in the partner countries supporting the construction and operation of IceCube Neutrino Observatory, currently comprised of funding agencies from Belgium, Germany, Sweden, and the United States. The Group is informed by the Spokesperson of the Collaboration, the Director of Operations, the Principal Investigator and others as appropriate.

Decisions

The Group is committed to operate through discussion and consensus. The Executive Agent (the NSF) will make final decisions on matters before the group related to the operation of IceCube.

Issues that may come before the Group include:

- Approval of a formal charter for the Group.
- Review of Memoranda of Understanding (MOU) between the various institutions.
- Concurrence on the Maintenance and Operations Plan.
- Funding issues.
- Concurrence on the Collaboration's plans for new membership in the collaboration.
- Data sharing and data management policies.
- Coordination regarding press releases and education and outreach activities.
- Input on seasonal flight and personnel logistics planning.
- Other matters related to successful operation of the IceCube Neutrino Observatory for science.

Appendix E: Dissemination and Sharing of IceCube Research Results and Data

This defines the IceCube strategy for providing access to research results and data by the broader research community. NSF policies and guidance promote efforts by grantees to produce the timely publication of results and to make data and software available to other researchers. In addition, the Parties to the Antarctic Treaty agree that, to the greatest extent feasible and practicable, scientific observations and results from Antarctica shall be exchanged and made freely available.

IceCube is a facility-class experiment with the primary goal to identify sources of astrophysical neutrinos. NSF supports a wide range of approaches to the release of facility data, e.g., the particle physics model where data is exclusively available to members of the collaboration and the astronomy model where data are readily made public.

The Large Hadron Collider experiments follow the particle physics model; the Atacama Large Millimeter/submillimeter Array (ALMA) – the astronomy model; and, the Wilkinson Microwave Anisotropy Probe (WMAP) – an intermediate model. IceCube is similar to WMAP and large air shower experiments where data is collected, analyzed, published and released.

The public release of data in a scientifically meaningful way is not a trivial undertaking. Currently there are three ways to access IceCube data:

1. IceCube Collaboration Membership
2. Associate Membership
3. Direct Access to IceCube Public Data Pages

IceCube Collaboration Membership – The IceCube Collaboration consists of scientists at Collaboration Constituent Institutions. The condition for membership and for institutional recognition is that the group makes a significant contribution to IceCube.

Any scientist or group of scientists may apply to the Spokesperson of the Collaboration for membership of their institution in IceCube. Details on these arrangements can be found elsewhere in this IceCube Collaboration Governance Document. New groups join the IceCube Collaboration every year providing evidence that membership is a proven way to access IceCube data.

Associate Membership – Scientists outside the IceCube Collaboration who have a concept for a particular analysis can apply to the Collaboration for Associate Membership for the purpose of performing a particular analysis or class of analyses within the Collaboration. Papers that cover the research in question are co-signed by the associate and the collaboration. The Associate Member has no other rights or responsibilities within IceCube. Associate Membership may be preferred over joining the Collaboration, a rather lengthy process that requires financial and service contributions operations.

There are a number of active Associate Members including the University of Tokyo.

Direct Access to IceCube Public Data Pages – Raw data is securely stored and backed up, consistent with NSF policy. Extracting science from the data requires the use of elaborate hardware and software tools developed by the Collaboration. Like any other particle physics detector, data directly relevant to a scientific issue are obtained after analysis chains that typically require the coordinated efforts of several members of the Collaboration.

In order to be responsive to both the scientific communities' need for usable scientific data and to the NSF requirement for public access to unselected data, IceCube plans to release data in two ways.

1. Release of event reconstruction information for events selected as neutrinos from the overwhelming background of cosmic ray muons.
2. Release of primary event data on all events transferred north over the satellite and used as the basis for analyses.

Data will be made available upon publication of results. For example, when the initial searches for point sources, neutrinos from transient sources, and diffuse astrophysical neutrinos are published the relevant event information associated with this analysis will be made available in an easy to read format. The event information will include reconstructed direction (right ascension, declination), time, reconstructed energy, and quality information of these events. Partial information may be made available earlier.

The IceCube Collaboration has created a data release webpage that serves as the entry point for future data releases to the scientific community, <http://www.icecube.wisc.edu/science/data>. Initially, this webpage contains release of the 2000-2006 AMANDA data. The URL to IceCube data release webpage is an explicit reference in the corresponding journal publication and will remain the same during IceCube operations (Abbasi *et al* (IceCube Collaboration) Phys.Rev.D79:062001, 2009. e-Print: arXiv:0809.1646). A second, similar, entry point will be developed and made available to the public for the release of "primary" data.

IceCube data releases will follow a similar procedure as the process used to release the AMANDA data. The first paper completed on the combined seven-year data set was the point source analysis. The initial release included right ascension and declination. A second update included identifiers for events included in a publication on atmospheric neutrinos and the Lorentz invariance. This sample is a subset of the full point source data set and meets the highest purity requirements. The final update to the data release page for AMANDA included the event times at full precision after a time dependent analysis on this event sample was completed.

During the operations phase of IceCube it is anticipated that IceCube neutrino data will be released within two to three years after the completed run in which the data are acquired. It is anticipated that the event information will consist of the reconstructed event information and quality information, including the likelihood that an event is caused by a neutrino. The event information might also include a measurement on the probability of the event being a muon or a cascade.

Important requirements for data release are: 1) the IceCube Collaboration's analyses are completed in accordance with the Collaboration's internal approval processes, which include adhering to the principles of blind analyses where practical, and, 2) the calibrations and reconstructed event information is high quality and it is unlikely the information will need to be changed or corrected.

Once IceCube is in steady state operation we continue to plan on annual cycles of data runs beginning in April. Data runs will consist of defined conditions of triggers, thresholds and operational conditions of the detector. The working groups analyze these data sets for the various physics analyses. A reasonable assumption is that ten to fifteen publications will be

made using the annual data set and completed on a time scale of two years. Approximately two years after the annual data run is complete it is reasonable to expect that event information can be released. The data release cycle will follow the run completion cycle with a fixed time delay.

The sequence from data taking to publication can be summarized as follows:

1. Data Taking Run (~12 months)
2. Data Processing by Adding IceCube Event Reconstructions
3. Data Analyses for Specific Science Goals
4. Preparation of the Final Data Set
5. Perform Final Physics Analyses and Un-Blind Results
6. Publish Results
7. Release Data Set 1
8. Release Data Set 2

Data Release Set 1 – reconstructed events for the scientific community

The released data that is already reconstructed and most background events will have been removed from the final dataset published, will consist of the following quantities:

Event Time (MJD)

Direction (RA, Dec)

Directional Error

Degrees of Freedom in Fit

Energy Estimator

Flags to Indicate Event Type (e.g., track like, cascade like, etc.)

We plan to release these data in versions of event catalogs. We may revise a catalog of an earlier year to update information to include better reconstruction algorithms and filtering processes to offer a combinable set of data to the scientific community. Based on feedback from this community we may add more information in later releases to accommodate all types of community requests.

Data Release Set 2 – Public access of primary data

The release that contains all the primary detector data, which is calibrated, but not reconstructed, will consist of the following quantities:

Run/Event header with trigger information, event data and time, etc...

Array of all DOM signals with calibrated position, time, and charge (x,y,z,t,q)

We plan to release these events as yearly sets with the entire primary data in binary files on a time scale consistent with the release of data set 1. We will also supply on the website additional documentation to the public including a description of the binary data format, a general description of the detector quantities and what they represent, some illustrative event display pictures, links to relevant publications documenting the detector, and may possibly supply an event reader for a single platform and language. The anticipated size of one full year primary data is several to ten Terabytes, and may optionally require a small charge to cover the cost of physical media or internet server usage.

Appendix F: IceCube Collaboration Code of Conduct*

*Policy adapted from the Anti-Harassment Guidelines of the LIGO Scientific Collaboration for use by the IceCube Collaboration (https://dcc.ligo.org/public/0115/M1400285/003/lsc_harassment-final.pdf)

The IceCube Collaboration strives to create a collaborative, inclusive, and professional environment to promote discovery, cooperation, and personal growth. All members of the IceCube Collaboration will treat each other with respect and consideration and conduct themselves in a professional manner that is welcoming to all and free from any form of discrimination, harassment, or retaliation.

Scope

This document is intended to reaffirm that the IceCube Collaboration repudiates and does not tolerate any form of harassment among its members. In all collaboration related interactions, whether in person or digitally, members will avoid any inappropriate actions or statements.

Creating a supportive environment to enable scientific discourse is the responsibility of all. This policy also applies to all participants at any collaboration associated event, including attendees, presenters, vendors, staff, volunteers, and all other stakeholders. If a violation is committed by an event participant that is not an IceCube collaborator, it should be reported to event organizers or staff and/or a member of the IceCube Diversity Task Force.

Definitions of Harassment

For the purposes of this document, the IceCube Collaboration adopts the definition of sexual harassment and other harassment of the *Anti-Harassment Policy for Meetings and Activities* of the American Astronomical Society and Divisions (<http://aas.org/policies/antiharassmentpolicy>).

Sexual harassment

“Sexual harassment refers to unwelcome sexual advances, requests for sexual favors, and other verbal or physical conduct of a sexual nature. Behavior and language that are welcome/ acceptable to one person may be unwelcome/offensive to another. This is especially important for those in positions of authority since individuals with lower rank or status may be reluctant to express their objections or discomfort regarding unwelcome behavior. Sexual harassment does not refer to occasional compliments of a socially acceptable nature. It refers to behavior that is not welcome, is personally offensive, debilitates morale, and therefore, interferes with work effectiveness. The following are examples of behavior that, when unwelcome, may constitute sexual harassment: sexual flirtations, advances, or propositions; verbal comments or physical actions of a sexual nature; sexually degrading words used to describe an individual; a display of sexually suggestive objects or pictures; sexually explicit jokes; unnecessary touching.”

Other harassment

“Harassment on the basis of any other protected characteristic [such as age, race, ethnicity, sexual orientation, gender expression, physical appearance, nationality, political affiliation, ability status, educational background, or any other characteristic protected by applicable laws] is also strictly

prohibited. This conduct includes, but is not limited to: epithets, slurs or negative stereotyping; threatening, intimidating or hostile acts; [photography without permission or stalking;] demeaning jokes and display or circulation of written or graphic material that demeans or shows hostility or aversion toward an individual or group.”

Expectations

Any individual defined by the scope of this document asked to stop any harassing behavior is expected to comply immediately. Harassment may constitute a willful and/or egregious violation of the IceCube Collaboration code of conduct. If an individual engages in behavior that meets the above definition of harassment, collaboration leadership may take any action they deem appropriate, ranging from warning the offender to initiating a procedure of expulsion from the collaboration.

If you perceive you have been the subject of harassment...

This section offers some advice and guidance to a member in the unfortunate case harassment has occurred. The following suggestions are not in order of importance or priority. Remember that every situation is different and the steps you follow should be adjusted to meet your situation and level of comfort. *Safety is the first priority.* If you feel endangered, act immediately to leave the situation, attract attention, or seek help. Depending on the nature and severity of the incident, the member may want to report it immediately to appropriate law enforcement agencies and/or to the relevant office of their institution. IceCube Collaboration leadership will act to ensure that there are no negative consequences for members reporting an incident. On the contrary, members are strongly encouraged to report instances of harassment, and retaliation for such reports will not be tolerated.

If you perceive yourself to have been the subject of harassment in the performance of IceCube Collaboration activities, you should consider doing some or all of the following:

1. Consult the Ombudsperson for confidential and informal advice. The Ombudsperson will assist a member at any time in identifying and evaluating options for resolving and managing the incident and make referrals to other appropriate academic and community resources. Confidentiality will be honored unless you explicit request an action that requires otherwise (see IceCube Collaboration Ombudsperson Policy).
2. If possible, and you feel comfortable, inform the perpetrator that his/her behavior is unwelcome. Explain what is bothering you, identify the behavior as harassment, and state that you want that behavior to stop. If you are uncomfortable talking to the harasser face-to-face, you may write a brief note or email. Be sure to keep a copy. However, you are not required or expected to confront your harasser prior to reporting an harassment related incident and are welcome to consult the ombudsperson for advice on this step. Confront your harasser only if you feel comfortable doing so.
3. If you want to initiate a formal complaint or request actions to be taken by IceCube Collaboration Leadership, inform the IceCube Spokesperson. After consulting with leadership while still maintaining anonymity for the involved parties, the Spokesperson may, at their sole discretion, contact affected parties and, in instances of unresolved or serious conflicts, institutional resources of the accused party for a formal investigation. Any further action by leadership following the

IceCube Collaboration Governance Document

conclusion of the formal investigation by these institutional resources will conform to the IceCube Collaboration Formal Complaint Policy.

4. Talk to your advisor, the Human Resource Department, Ombudsperson, or equivalent entity at your home institution.

5. If appropriate, consider reporting the incident to the fair employment agency in your jurisdiction, or equivalent authorities. In the United States, if you plan to file a lawsuit against a coworker, you must first file a sexual harassment complaint with these entities.

6. Report the incident to the appropriate law enforcement agencies.

If you witness a case of harassment...

This section offers some advice and guidance to a member witnessing an instance of harassment. As in the previous section, the following suggestions should be adjusted to meet each particular situation.

If you witness a colleague being subjected to harassment during the performance of IceCube Collaboration activities, you should:

1. If you believe that someone's safety is in jeopardy, immediately contact local law enforcement. When reporting the incident, provide as much information as is available, such as the name of the harasser, the nature and approximate time of the incident, the circumstances surrounding the incident, and the names of other people involved in the incident.

2. If violations of this code of conduct occur and personal intervention seems appropriate and safe, proceed to do so in a cautious manner. Note that a third party should be considerate of all parties involved before intervening.

3. Talk to your advisor, the Human Resource Department, Ombudsperson, or equivalent entity at your home institution.

4. Report the harassment incident to the Ombudsperson. The Ombudsperson will inform the IceCube Spokesperson unless you request otherwise. All reports to the Ombudsperson are confidential and no information will be released but to the IceCube Spokesperson without your previous consent. Please do not disclose information about the incident publicly until the Ombudsperson has had sufficient time to address the situation.

Related IceCube Documents

[IceCube Diversity Statement](#)

[Diversity Task Force definition and member list](#)

[Diversity Task Force Confidentiality Agreement](#)

IceCube Collaboration Ombudsperson Definition and Policy

IceCube Collaboration Governance Document

IceCube Collaboration Formal Complaint Policy

Other Resources

Know Your Rights: Workplace Sexual Harassment, The American Association of University Women (AAUW), <https://www.aauw.org/what-we-do/legal-resources/know-your-rights-at-work/workplace-sexual-harassment/>

Sexual Harassment policies in different countries <http://hrmpractice.com/sexual-harassment-countries/>

Facts on Sexual Harassment, EEOC, <https://www.eeoc.gov/eeoc/publications/fs-sex.cfm>

Sexual Harassment, RAINN, <https://www.rainn.org/articles/sexual-harassment>

Sexual Harassment in the Workplace, National Women's Law Center, <https://nwlc.org/issue/sexual-harassment-in-the-workplace/>

Anti-Harassment Policy for Meetings and Activities of the American Astronomical Society and Divisions, <https://aas.org/policies/anti-harassment-policy>

University of Wisconsin-Madison, Sexual Assault Campus & Community Sexual Assault Resources <https://www.uhs.wisc.edu/prevention/violence-prevention/resources/>

Relevant Literature

Campus Sexual Assault: Suggested Policies and Procedures of the American Association of University Professors (AAUP), <https://www.aaup.org/report/campus-sexual-assault-suggested-policies-and-procedures>

Here's What to Include in Your Meeting's Harassment Policy, Professional Convention Management Association, <http://www.pcmaconvene.org/features/heres-what-to-include-in-your-meetings-harassment-policy/>

Conference anti-harassment/Policy resources, Geek Feminism Wiki, http://geekfeminism.wikia.com/wiki/Conference_anti-harassment/Policy

Reporting Harassment at a Convention: A First-Person How To, <https://whatever.scalzi.com/2013/06/28/reporting-harassment-at-a-convention-a-first-person-how-to/>

Conference anti-harassment campaigns do work: Three existence proofs from SF&F, atheism/skepticism, and open source, <https://adainitiative.org/2013/08/23/conference-anti-harassment-campaigns-do-work-three-existence-proofs-from-sff-atheismskepticism-and-open-source/>

Appendix G: IceCube Collaboration Ombudsperson Policy and Definition*

*Policy adapted from the LSC Ombudsperson: Role and Function of the LIGO Scientific Collaboration for use by the IceCube Collaboration (<https://dcc.ligo.org/public/0099/M1300006/001/LSCOmbudsperson.pdf>)

The IceCube Collaboration Ombudsperson provides confidential, informal, independent, and neutral dispute resolution advisory services for all members of the IceCube Collaboration. (The IceCube collaboration policy for formally addressing interpersonal concerns or problems is described in *IceCube Collaboration Policy for Formal Complaints*.) The Ombudsperson assists all members in identifying and evaluating options for resolving and managing conflicts, provides various types of informal mediation services, and makes referrals to other appropriate academic and community resources. The IceCube Ombudsperson is meant to help with conflicts that arise in IceCube working groups or events, not in problems internal to an academic institution, which usually can be mediated by the appropriate offices in the host institution.

The Ombudsperson is familiar with the organizational structure of the collaboration and can provide current information about services, programs, policies, and procedures. Due to its informal, confidential, and independent role outside the administrative structure of the collaboration, notifying an Ombudsperson about a problem does not result in the generation of records, nor does it constitute legal notice to the member host institution about the existence of a problem. For those interested in making official complaints to host institution about a problem, the Ombudsperson can assist by making appropriate referrals.

The IceCube Ombudsperson reports only to the IceCube Spokesperson, but does not share any confidential information. The IceCube Ombudsperson may be a member of IceCube, but should not have any other leadership or supervisory role that may compromise the Ombudsperson's impartiality.

IceCube adopts the role definitions from the International Ombuds Association adopted below from <http://www.ombudsassociation.org/Resources/Frequently-Asked-Questions/What-is-an-Organizational-Ombudsman.aspx>:

The Organizational Ombudsperson—Role and Function

The primary duties of an organizational ombudsperson are (1) to work with individuals and groups in an organization to explore and assist them in determining options to help resolve conflicts, problematic issues or concerns, and (2) to bring systemic concerns to the attention of the organization for resolution.

An organizational ombudsperson operates in a manner to preserve the confidentiality of those seeking services, maintains a neutral/impartial position with respect to the concerns raised, works at an informal level of the organizational system, and is independent of formal organizational structures. Successfully fulfilling that primary function in a manner consistent with the IOA Standards of Practice requires a number of activities on the part of the ombudsperson while precluding others.

Activities and functions most frequently undertaken by an ombudsperson include, but are not limited to:

- Listens and understands issues while remaining neutral with respect to the facts. The ombudsperson doesn't listen to judge or to decide who is right or wrong. The ombudsperson listens to understand the issue from the perspective of the individual. This is a critical step in developing options for resolution.
- Assists in reframing issues and developing and helping individuals evaluate options. This helps individuals identify the interests of various parties to the issues and helps focus efforts on potential options to meet those interests.
- Guides or coaches individuals to deal directly with other parties, including the use of formal resolution resources of the organization. An ombudsperson often seeks to help individuals improve their skill and their confidence in giving voice to their concerns directly.
- Refers individuals to appropriate resolution resources. An ombudsperson may refer individuals to one or more formal organizational resources that can potentially resolve the issue.
- Assists in surfacing issues to formal resolution channels. When an individual is unable or unwilling to surface a concern directly, the ombudsperson can assist by helping give voice to the concern and /or creating an awareness of the issue among appropriate decision-makers in the organization.
- Facilitates informal resolution processes. An ombudsperson may help to resolve issues between parties through various types of informal mediation.
- Identifies new issues and opportunities for systemic change for the organization. The unique positioning of the ombudsperson serves to provide unfiltered information that can produce insight to issues and resolutions. The ombudsperson is a source of detection and early warning of new issues and a source of suggestions of systemic change to improve existing processes.

What an ombudsperson does not do:

- Because of the informal, neutral, confidential and independent positioning of an ombudsperson in an organization, they typically do not undertake the following roles or activities:
- Participate in formal investigations or play any role in a formal issue resolution process
- Serve in any other organizational role that would compromise the neutrality of the ombudsperson role
- Receive notice for the organization
- Make binding decisions or mandate policies
- Create or maintain records or reports for the organization

Selection of the IceCube Ombudsperson

The IceCube Ombudsperson office will be staffed by two representatives, with one representative male and one female. Ombudsperson candidates can volunteer themselves or be nominated by a member of the IceCube Collaboration Board (ICB). The two representatives should ideally come from different working groups to help further eliminate overlap in conflicts

of interest.

Once volunteered or nominated, Ombudsperson candidates will be appointed by the ICB. New representatives should be nominated six months before their term is to begin to allow for them to complete Ombudsperson training facilitated by the collaboration. Ombudsperson terms of service will last two years and are renewable.

Appendix H: IceCube Collaboration Policy for Formal Complaints

Overview

This document describes the policy of the IceCube Collaboration for formally addressing interpersonal concerns or problems that may arise in the performance of collaboration activities. This policy applies to an instance in which any member of the IceCube Collaboration perceives an unfair act has occurred which leads to an injustice or harm.

Any exception to this policy requires the approval of the IceCube Spokesperson. Although the Collaboration encourages open communication between its members, a formal Grievance Procedure for resolution of collaboration-related grievances has been established in order to provide fairness and equity. The IceCube Spokesperson and the IceCube Ombudspersons are available to assist the collaboration members with advice on matters of policy interpretation, rights of members, and use of the Grievance Procedure.

There will be no negative consequences, and no retaliation tolerated, for members using or participating in the collaboration problem resolution process in good faith.

Definitions

For purposes of this policy, a grievance is defined as any difference arising between two members as peers or in the organization hierarchy, as to the interpretation or application of an IceCube Collaboration rule, policy, or procedure.

An IceCube Collaboration activity is defined as any activity performed by members in support of the Collaboration, including presence and contributions at an IceCube-related event or conference; observation; outreach; and technical and/or analysis contributions.

Applicability

The intent of this procedure is to provide members with a way to discuss and address concerns or problems involving the Collaboration. The procedure applies only when other formal processes do not exist. It does not take the place of any of the IceCube institutions' grievance procedures nor is it intended to replace reporting to appropriate law enforcement agencies.

In particular, members who believe they have been subject to discrimination in matters of employment or matters of sexual harassment should take the matter to the attention of the appropriate office of the institution where the injustice or harm has occurred. In these cases, members may also seek informal advice from the IceCube Ombudspersons (see the IceCube Collaboration Ombudsperson Policy and Definition), their institutional Ombudsperson, and/or the IceCube Spokesperson.

IceCube Collaboration Governance Document

Issues not addressed by this policy

This policy does not apply to (a) grievances unrelated to IceCube activities and (b) grievances between members from the same IceCube institution. Where there is a question of applicability, the IceCube Spokesperson will determine whether or not an issue may be dealt with through this grievance process.

Eligibility

This procedure is available to all members during the performance of their IceCube Collaboration activities, as described in point 2 above.

Additional Resources

Should the aggrieved member not wish to pursue this formal grievance process, the Collaboration also offers the option of seeking confidential, informal discussion outside this formal grievance process for resolving complaints. Those seeking this option for assistance should check with an IceCube Ombudsperson, who have their own mandate and guidelines for providing help. (See the IceCube Collaboration Ombudsperson Policy and Definition).

Informal Resolution

The mutual interest of all the parties involved in a grievance is best served when there is regular, forthright communication.

A member who believes a justifiable collaboration-related complaint exists shall take steps to resolve the problem in a discussion with the other party. An IceCube Ombudsperson may provide confidential, non-binding advice in the informal resolution. Should informal attempts at resolution not be satisfactory, the member may then file a grievance according to the formal procedure.

Grievance Procedure

The procedure described below only applies to grievances related to IceCube activities and between members of different IceCube institutions. Grievances between members of the same institution should be resolved by their IceCube institutional lead (IL) or by the appropriate institutional office. Formal complaints against the IceCube Spokesperson follow the special procedure described in Step III below.

Grievance between collaboration members, Step I

1. If the grievance is of a scientific nature and between two members of a single working group, the aggrieved collaboration member should bring the concern to the working group lead(s). The working group lead(s) will look into the problem and make an effort to resolve it, providing the complainant with a written answer within 10 working days.
2. Similarly, a grievance of a scientific nature between members of different working groups should be brought to the attention of the leaders for the relevant working groups and to the analysis coordinator. These individuals will look into the problem and make an effort to resolve it. The analysis coordinator will provide the complainant with a written answer within 10 working days.

3. Complaints of non-scientific nature should be brought by the aggrieved collaboration member to the attention of their IL. The IL will inform the IceCube Spokesperson of the receipt of the grievance and look into the problem, making an effort to resolve it within a reasonable time. The IL will provide the complainant with a written answer within 10 working days after the matter has been brought to their attention, with a copy to the Spokesperson.

4. If the circumstances of the grievance are such that it would be inappropriate for the IL to address the complaint, the member may bring their complaint directly to the IceCube Spokesperson (step II).

Grievance between collaboration members, Step II

If the grievance is not satisfactorily resolved in Step I, the collaboration member may request an additional review by the spokesperson. In this case the complainant should submit a written appeal including:

- a description of the concern, with a reference to the policy that they believe was violated or not followed
- suggestions about ways in which the problem may be resolved
- a copy of the written responses received in Step I, if any
- the IL's, group leaders(s)' or analysis coordinator's proposed resolution, if any
- any other pertinent documents or information.

The Spokesperson will review this information, determine if the appeal should be considered further, and inform the member of the decision.

If the Spokesperson deems that further action is motivated, a meeting will be scheduled with the complainant and the working group lead(s), the analysis coordinator or the IL, as appropriate. Other individuals may be invited by the Spokesperson to assist in the resolution of the problem. The meeting will be closed. If a resolution is not possible at this meeting, the Spokesperson will have 10 working days in which to make a final decision. The decision will be promptly communicated in writing to the involved parties.

Grievance against the IceCube Spokesperson, Step III

In order to file a formal grievance against the IceCube Spokesperson, a member must bring the concern or problem to the attention of the IceCube PI. The PI will inform the IceCube Executive Committee of the receipt of the grievance and look into the problem, making a reasonable effort to resolve it. The PI will provide the member with a written answer within 10 working days after the matter has been brought to their attention, with a copy to the Executive Committee.

If the member is not satisfied with the PI's resolution and requires an additional review, they must submit a written appeal to the Executive Committee, within 10 days of receiving the PI's response. The Executive Committee will appoint a senior member with no perceived conflict of interest to act as a Review Committee Chair for this specific case. The Review Committee Chair may be a member of the Executive Committee when appropriate. The Review Committee Chair in consultation with the Executive Committee will schedule a meeting with the member and any other individuals who might be of assistance in the resolution of the problem. The meeting shall be held within 10 working days from receipt of the written grievance. The meeting will be closed. If possible, the Review Committee Chair will resolve the problem at this meeting. If a resolution is not possible, the Review Committee Chair will have 10 working days in which to make a final decision in consultation with the Executive Committee. The decision will be promptly communicated in writing to the complainant, to the Executive Committee and to the IceCube Spokesperson.

During this procedure concerning a formal grievance against the IceCube Spokesperson, the *ex officio* membership of the Spokesperson in the Executive Committee will be suspended.

Records

The official records of the progress of a grievance and the established time limits are kept by the IceCube Spokesperson (or the PI for a grievance filed against the IceCube Spokesperson). A written grievance which is not answered within the time allowed may be sent on to the next step by the aggrieved party. The Spokesperson may extend any time limit in the grievance process with the mutual agreement of the parties.

No external legal representatives, such as attorneys, will be permitted to attend interviews or meetings with IceCube members or management during the problem resolution process. No tape or other recordings will be made.

Appendix I: Legacy Authorship and Emeritus Authorship

Legacy authorship: Individuals who have made exceptional and lasting contributions to IceCube construction or science may be nominated for “legacy authorship”. Legacy authors would be added to the author list for any paper reporting a significant discovery. Nominations of individuals eligible for legacy authorship can, at any time, be submitted to the spokesperson by any institutional lead in the collaboration. The nominations will be reviewed and evaluated by a committee chaired by the spokesperson, ensuring that at least one of the following criteria is satisfied:

- The nominee has at some point held the primary responsibility for a vital part of IceCube design/hardware/construction
- The nominee has held the primary responsibility for a vital part of data acquisition/data handling/simulation
- The nominee has provided recognized leadership contributions to the development and/or operations of the IceCube project

The committee will, apart from the spokesperson (ex-officio), consist of three voting collaboration members selected by the spokesperson in consultation with the Executive Committee, and one or more (non-voting) advisory members. The period of office of the voting members is two years, renewable. Following a positive committee decision, consent from each of the proposed legacy authors will be sought. Nominations declined by the committee may be resubmitted by any collaboration member for reconsideration - but at most once during a two-year period.

Emeritus authorship: Individuals who have retired from a position at their home institution but continue to provide recognized active contributions to the scientific mission of IceCube will be designated “emeritus authors” and included by default in the author list of all IceCube publications. Emeritus authors should be identified as a part of an institution’s Statement of Work. After consultation with the spokesperson and the ICNO PI for M&O, they may be excluded from the IceCube M&O head count.

Appendix J

Current status of IceCube and Gen2 as collaborations is one of adiabatic merging. However, this is insufficient in some cases. Coordinated merging of Gen2 and IceCube should enable Gen2 members to have a say on new Gen2 members, establishing working groups, good information flow to members of the collaboration, etc. The regulations in this appendix are intended as an interim stage and is not a full merger of Gen2 and IceCube.

This appendix regulates the interaction of the **IceCube Collaboration** with the **IceCube-Gen2 Collaboration**. This appendix has a validity of 4 years after it has been approved by the IceCube Collaboration Board, which can be renewed. This appendix will be amended at the time funding is obtained to commence the construction of IceCube-Gen2.

IceCube-Gen2 Collaboration Board (aka ICB+)

The ICB+ is the final authority on scientific and collaboration matters of IceCube-Gen2, except where explicitly delegated.

The ICB+ is a superset of the IceCube Collaboration Board (ICB). All members of the ICB are members of the ICB+, including ICB ex-officio members. In addition, institutions that are members of IceCube Gen2, but are not full members of IceCube are also represented at the ICB+. Representations of institutions at the ICB+ follow the same rules as for representations of institutions at the ICB. The lists of IceCube-Gen2 member institutions, as of December 2021, are provided at the end of this appendix.

The ICB+ votes and deliberates on all matters that are specific to the IceCube-Gen2 collaboration. Items that concern simultaneously IceCube and IceCube-Gen2 are discussed and voted on at the ICB+. Voting rules for the ICB+ are identical to those established for the ICB in this governance document.

ICB+ meetings are chaired by the IceCube Spokesperson. The IceCube Spokesperson role in the ICB+, including voting, is identical to that of the ICB.

For simplicity's sake, ICB+ Institutional Leads will be added to the ICB mailing list.

Membership in IceCube-Gen2

The IceCube-Gen2 collaboration consists of scientists at IceCube-Gen2 member institutions. The condition for membership and for institutional recognition is that the group makes a significant contribution to IceCube-Gen2. Full IceCube member institutions are members of IceCube-Gen2.

Any scientist or group of scientists may apply to the IceCube Spokesperson for membership in IceCube-Gen2. Admission to IceCube-Gen2 rules are identical to those of admission in IceCube, but the admission vote is held by the ICB+. Institutions that are nominated for IceCube-Gen2 membership will also be considered for Associate Membership in IceCube. This associate membership will be discussed and voted by the ICB following the statutes in this governance document. A scientist or group of scientists will only be accepted as a member of IceCube-Gen2 if both ICB and ICB+ are positive on their votes.

IceCube's Spokesperson, in collaboration with WIPAC, maintains a list of the IceCube-Gen2 member institutions. The authorlist for IceCube-Gen2 is maintained by WIPAC. It is the responsibility of IceCube-Gen2 Institutional Leads to maintain the authorlist for their institutions following the same rules as for IceCube that are described in this governance document.

IceCube-Gen2 membership of an individual or Institution may be revoked by the IceCube Spokesperson for a just cause, e.g., actions detrimental to IceCube-Gen2. A concurring vote by two-thirds of all IceCube-Gen2 member institutions is required. Only active votes will be counted.

IceCube-Gen2 Collaboration Committee (G2CC)

The IceCube-Gen2 Collaboration Committee advises the ICB+. Members of this committee are: a) The G2CC Chair elected by the ICB+ b) the IceCube-Gen2 PI c) The IceCube-Gen2 project scientist d) The IceCube Spokesperson e) IceCube's publications committee chair, plus additional members appointed by the chair. The initial formation of the G2CC committee eliminates the positions of 'Future IceCube Upgrade Coordinators'.

IceCube-Gen2 Collaboration Committee Officers

The **chair of the G2CC** is elected by the ICB+. The chair of the G2CC vote is organized by the IceCube's spokesperson. Nominations for chair of the G2CC are sought from the collaboration at large. Each member institution of IceCube-Gen2 may offer any number of candidates. The IceCube's spokesperson notifies each nominee that they have been proposed. Each nominee responds if they are willing to run for the election. Each nominee is urged to prepare a statement to be circulated to the ICB+, stating their goals. The winning candidate must have more than half of the weighted institutional votes cast in IceCube-Gen2. A quorum of two-thirds of the institutions must be satisfied for the G2CC chair election. If no candidate wins more than half of the weighted institutional votes, a second round is conducted with the top two weighted vote winners as contenders. The chair of the G2CC vote is organized by the IceCube's spokesperson. The chair of the G2CC serves for a period of two years and can be reelected for a maximum of one additional period.

The Chair of the G2CC appoints, in consultations with the G2CC and ICB+, (co)leaders of the IceCube-Gen2 working groups. As of May 2022, these working groups are:

- Surface array working group

- Simulation working group

- Radio working group

The chair of the G2CC reports to the ICB+ as appropriate.

The **IceCube-Gen2 Project Scientist** collaborates with IceCube's Analysis coordinator and other collaboration meeting organizers in setting up the IceCube-Gen2 part of the collaboration meeting. The IceCube-Gen2 Project Scientist arranges for timely and appropriate information to the IceCube and IceCube-Gen2 collaborations on the scientific aspects of IceCube-Gen2. This can happen, e.g., at presentations on the collaboration meeting, telecons, emails to the collaboration-wide lists in IceCube and/or IceCube-Gen2. The IceCube-Gen2 Project Scientist Collaborates with IceCube's Spokesperson, IceCube's Publications Committee chair and IceCube's Speakers Committee Chair to ensure that IceCube-Gen2 is properly represented in publications and conferences.

IceCube-Gen2 Publications

An IceCube-Gen2 member will be included as an ex-officio member of IceCube's Publications Committee. This member assists in the coordination of publications related to IceCube-Gen2. The Publication Committee operates as spelled out elsewhere in this governance document.

IceCube's Speakers Committee and IceCube-Gen2

The IceCube Speakers Committee provides coordination of IceCube-Gen2 speaking opportunities following the guidelines established elsewhere in this governance document. An IceCube-Gen2 member will be included as an ex-officio member of IceCube's Speakers Committee. This member assists in the coordination of conferences related to IceCube-Gen2.

IceCube-Gen2 institutional members as of July 2022

All IceCube-member institutions listed in Appendix A of this document are IceCube-Gen2 members. In addition, the following Institutions are IceCube-Gen2 members:

1. Department of Physics and Kavli Institute for Cosmological Physics, University of Chicago, Chicago, Illinois
2. Department of Physics and Astronomy, University of Notre Dame du Lac, Notre Dame, Indiana
3. Graduate School of Science, & Nambu Yoichiro Institute for Theoretical and Experimental Physics, Osaka Metropolitan University, Osaka, Japan
4. Department of Physics and Astronomy, Whittier College, Whittier, California