

Smart Chair Installation Guide

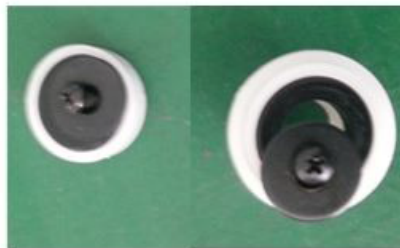


A: ATTACHING THE ARMRESTS:

OPEN THE MAIN BOX AND PLACE THE CHAIR BODY ON THE FLOOR AS SHOWN



UNSCREW THE (2) SETS OF SCREW/BOLTS FROM THE LEFT SIDE OF THE MAIN CHAIR BODY (BLACK SCREWS + WHITE PLASTICS)



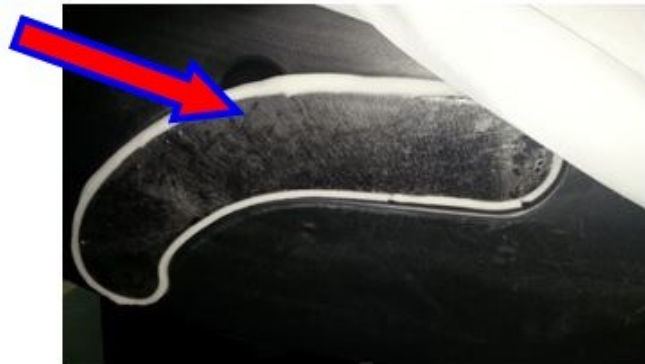
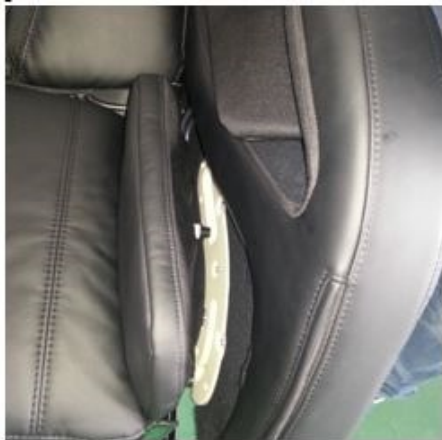
CONNECT THE LEFT AIR HOSE CONNECTOR WITH THE BLACK AIR HOSES FROM THE LEFT ARMREST (MATCH THE NUMBERS ON THE HOSES) AND PUT THE HOSES UNDER THE MAIN BODY



LATCH THE LEFT ARMREST ONTO THE PIN ON THE MAIN CHAIR BODY BACKREST



PUSH THE LEFT ARMREST FORWARD ONTO THE MAIN BODY AND UNZIP THE ARMREST COVER AND REMOVE THE CURVED BLACK PLASTIC PART SHOWN BELOW



NOW RE-INSTALL THE SCREWS AND WHITE PLASTICS WHICH WERE REMOVED IN THE ABOVE STEP AND RE-INSTALL THE CURVED BLACK PLASTIC COVER. FINISH THIS STEP BY ZIPPERING THE ARMREST COVER BACK UP



UNSCREW THE (4) SCREWS FROM THE ARMREST AND INSTALL THE REMOTE HOLDER WITH THE REMOVED SCREWS.



NOW REPEAT THE PROCEDURE ON THE RIGHT ARMREST (REMOTE HOLDER ONLY ON LEFT ARMREST)

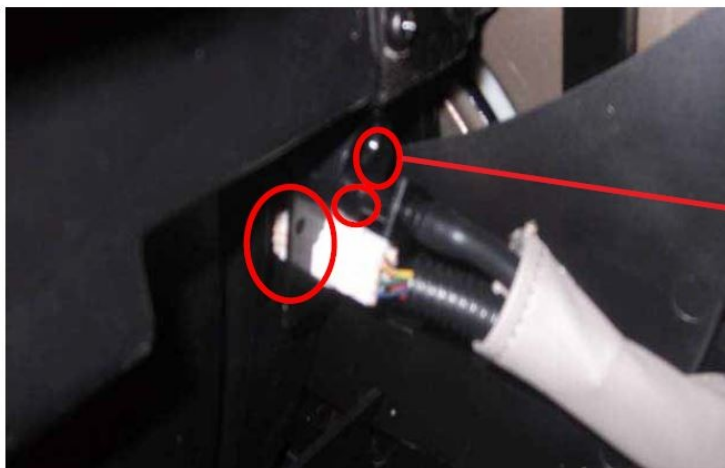
B: ATTACHING THE LEGREST:

REMOVE THE LEGREST FROM ITS PACKAGING AND POSITION IT IN FRONT OF THE MAIN CHAIR BODY.

Legrest →



INSERT THE POWER CABLE TILL IT CLICKS, THEN INSERT THE AIR HOSE INTO THE BOTTOM AIR HOSE OPENING (THERE ARE 2 OPENINGS, THE TOP IS NOT USED AND HAS NO FUNCTION)



* The air hose should be inserted into the bottom air hose opening slot shown here.

ON THE TOP LEFT AND RIGHT OF THE LEGREST ARE TWO BOLTS HOLES. INSERT THE HEX SCREW THROUGH THE BOLT HOLES TO FASTEN ONE SIDE OF THE LEG REST TO THE BODY OF THE MASSAGE CHAIR. REPEAT ON THE OTHER SIDE.



NOW ZIP THE LEGREST TO THE SEAT CUSHION AND THE LEGREST IS COMPLETE.

C: ATTACHING THE BACK CUSHION:

ZIP THE TOP OF THE BACK CUSHION TO THE TOP OF THE BACKREST. WHILE LOOKING AT THE CHAIR FROM THE FRONT THERE ARE THREE AIR HOSES IN THE BACK LEFT OF THE BACKREST CUSHION THAT NEED TO BE CONNECTED. BOTH ENDS OF THE AIR HOSES ARE NUMBERED. CONNECT THE MATCHING NUMBERS TO EACH OTHER, 5 TO 5, 6 TO 6, 11 TO 11.



WHILE LOOKING AT THE CHAIR FROM THE FRONT THERE IS ONE AIR HOSE AND ONE POWER CONNECTION IN THE BACK RIGHT OF THE BACK CUSHION THAT NEED TO BE CONNECTED. CONNECT THE AIR HOSE 12 TO 12 AND CONNECT THE POWER CABLE AS SHOWN



D: ATTACHING THE SPEAKER / AIRBAG UNITS:

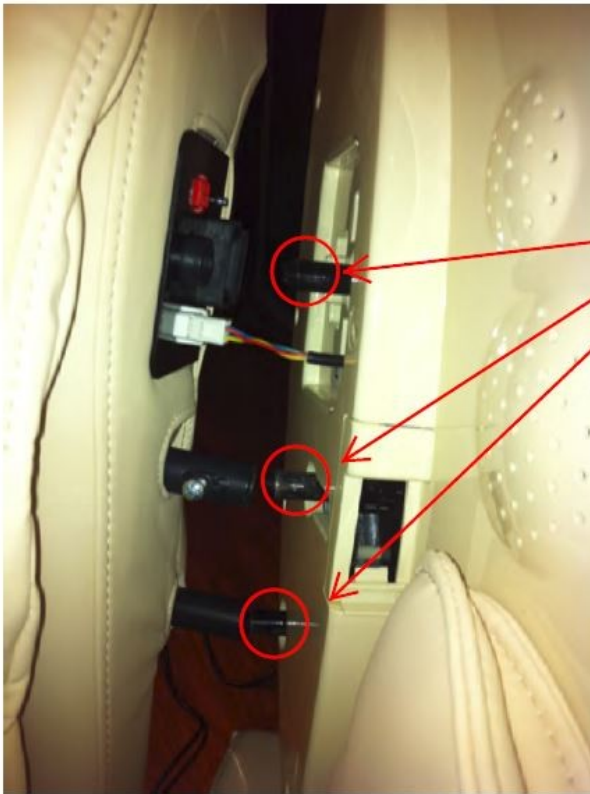
THE SPEAKER UNITS ARE LABELED L FOR LEFT AND R FOR RIGHT AS IF YOU ARE SITTING IN THE CHAIR



CONNECT THE WHITE SPEAKER CONNECTOR TO THE WHITE CONNECTOR ON THE CHAIR. PUSH ON TILL IT CLICKS

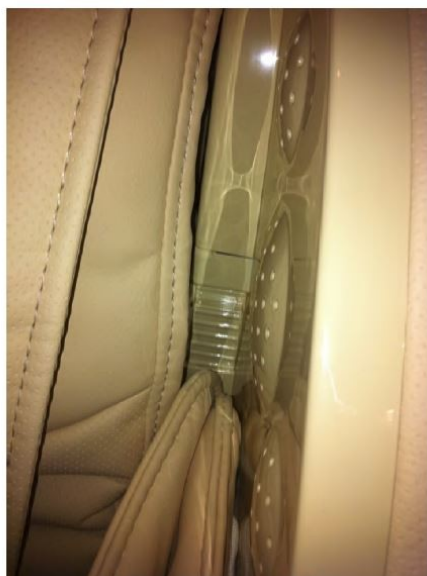


INSERT THE 3 JOINT PINS IN THE SPEAKER UNIT INTO THE THREE MATCHING CONNECTING TUBES ON THE CHAIR



Three Connecting
Tubes

AFTER THE JOINT PINS ARE FULLY INSERTED, MOVE THE SLIDER TO EXPOSE THE LOCKING SCREW. TIGHTEN THE SCREW AND MOVE THE SLIDER BACK TO COVER THE SCREW



AFTER PLUGGING IN POWER CORD AND REMOTE CONTROL CORD TO THE BACK OF THE CHAIR YOUR INFINITY SMART CHAIR IS READY FOR USE!



ENJOY!



WELLNESS FOR LIFE®

Infinity Massage Chairs
72 Stard Road
Seabrook, NH, 03874

603-910-5000
www.infinitymassagechairs.com