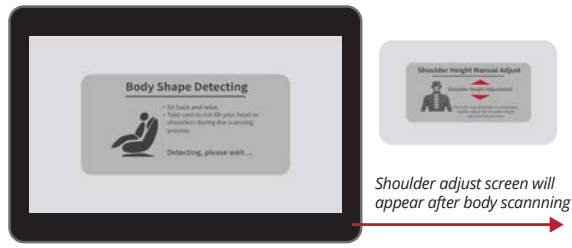


In-Use Screen



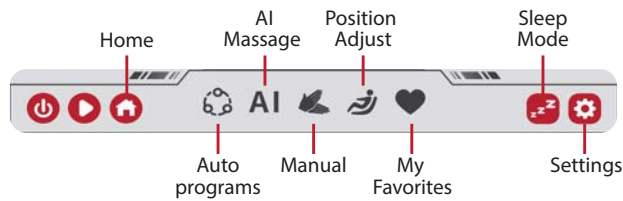
With Advanced AI, Body Scanning is now set up and down the back adjusting the depth of the 4D all along the back as well as scanning for the user height at the top of the shoulders. The result is an optimized setting specific to each user.

To begin, select any auto program. The chair will automatically begin scanning your body, mapping your back, shoulders, and neck. During this process it is important to remain seated back into the chair without lifting your head.



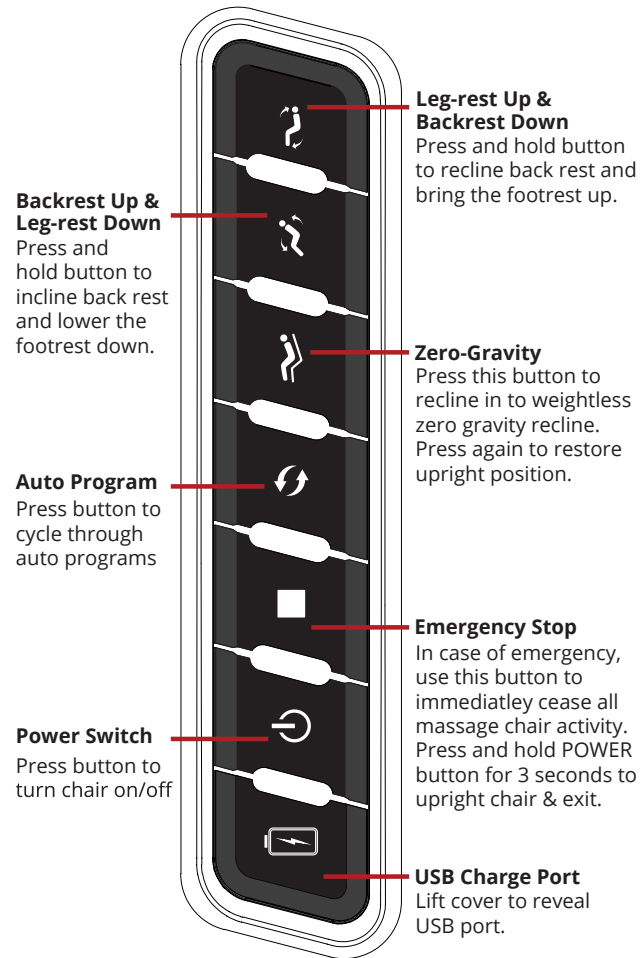
- 1 Program Name
- 2 Time Remaining
- 3 Foot Roller Speed
- 4 4D Intensity
- 5 Menu Screen Nav Icons
- 6 Voice Control/My Favorite
- 7 Active Airbags
- 8 Lumbar Heat
- 9 Airbag Pressure
- 10 Back Roller Position

After adjusting your shoulder height, you will be taken to the **In-use screen** where you can observe all current settings and session information. To personalize your massage to your exact needs, use the menu screen navigation to switch between the **Auto Program, AI Massage, Air Setting, Manual, Position Adjust, My Favorite, Sleep Mode** and **Settings** menu screens.



Quick Access Panel

The Quick Access Panel allows you to turn the chair on and off, control chair angles, cycle through auto programs, emergency stop the massage chair, and charge your USB devices



Backrest Up & Leg-rest Down
Press and hold button to incline back rest and lower the footrest down.

Leg-rest Up & Backrest Down
Press and hold button to recline back rest and bring the footrest up.

Zero-Gravity
Press this button to recline in to weightless zero gravity recline. Press again to restore upright position.

Auto Program
Press button to cycle through auto programs

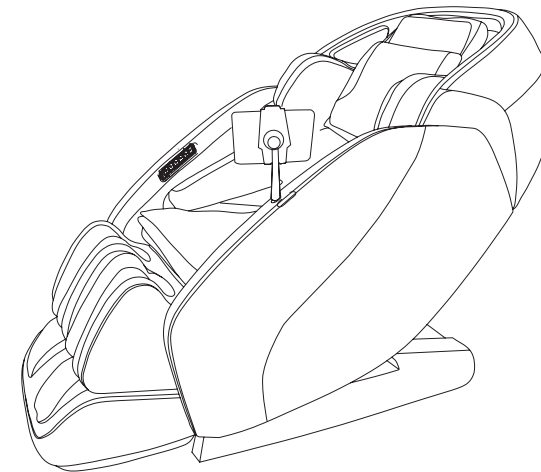
Emergency Stop
In case of emergency, use this button to immediately cease all massage chair activity. Press and hold POWER button for 3 seconds to upright chair & exit.

Power Switch
Press button to turn chair on/off

USB Charge Port
Lift cover to reveal USB port.

KYOTA®

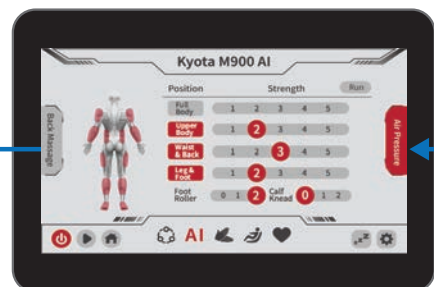
Quick Start Guide



Alternatively, scan the QR code to watch a remote tutorial video.

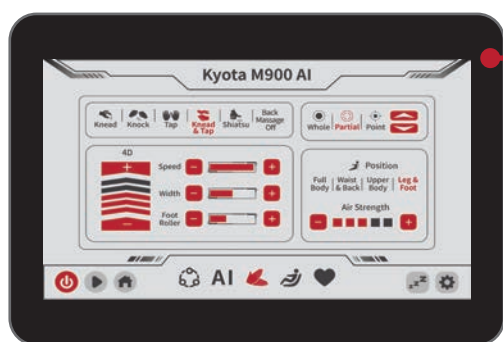
Hatsume M900 AI 4D Massage Chair

KYOTA®



AI Massage - With AI massage you can use the **Robotic massage** screen, or the **Air pressure** screen to customize your massage to your body. To switch between, tap the corresponding tab on the left and right edges of the screen.

Make all desired selections and tap rub to have the chair build the specific program you directed.

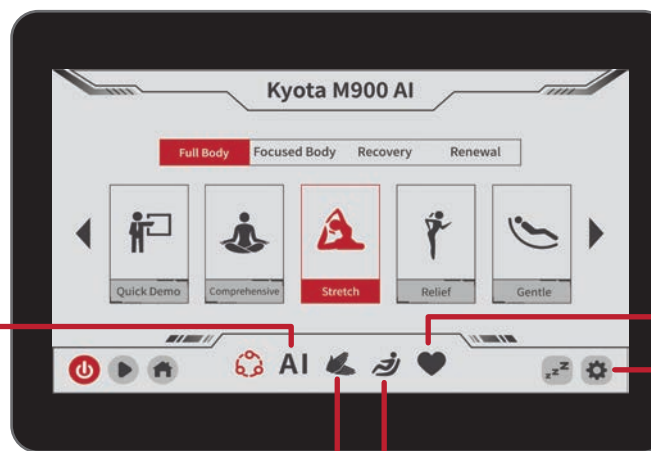


Manual Settings - Have a particular spot that needs more work? Take the power of massage into your own hands with Manual Settings. Use this screen to fully customize your own massage and find the perfect treatment for you.

For either AI Massage or Manual Settings, you can save the program you have created by tapping FAVORITE after the display reverts to the In-Use screen. There are 5 My Favorite storage slots.

Auto Program Page - After turning on your chair, and pressing the power button on your tablet, this is the first screen you will see. Use this screen to select from 20 pre-set auto programs nested into 4 categories. To select, simply tap the screen with your finger.

You can also use this screen to navigate all menu options using the nav-bar icons on the bottom of the page.



My Favorite - Your chair has the ability to save your favorite customized massage programs to memory. Use this page to access or delete your saved memory programs.



Position Adjustment - While your massage program is running, use this screen to make adjustments to chair angles, and Zero Gravity recline settings.



System Settings - Use this screen to adjust and personalize your chair and remote control settings. Tap the double carrot arrows to switch between **Settings screen, Chromotherapy lights screen, and SoothMe™ sound therapy screen.**