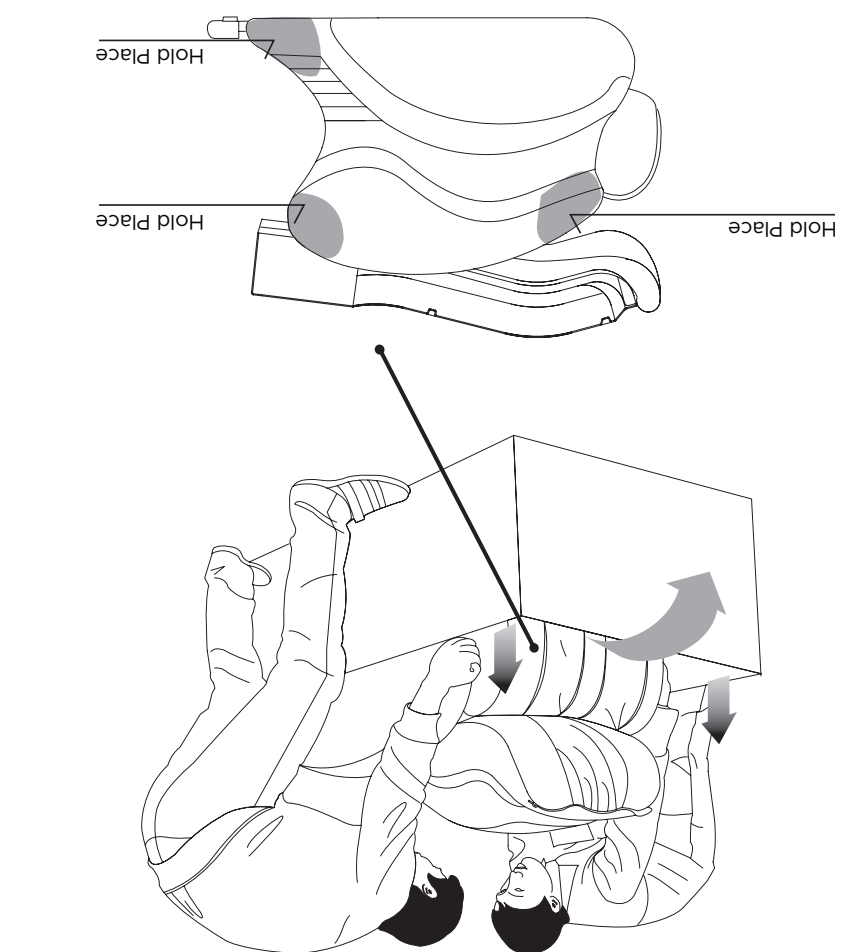



Step 1: Prior to assembly, carefully unpack all box contents. Check box contents to the detail below. Make sure all contents are accounted for. If anything is missing, please contact INFINITY at 603-910-5000. Do not return to the place of purchase.

Before assembling your chair, watch an assembly video at: www.infinitymassagechairs.com/assembly-tutorials

Alternatively, scan the QR code to go directly to the URL above.

SCAN CODE



Step 2: Open the box and remove packaging materials. Remove protective covering from the chair. With a partner, lift the chair out of the box.

INFINITY®

MASSAGE CHAIRS

Assembly Guide

IT-9810 Massage Chair

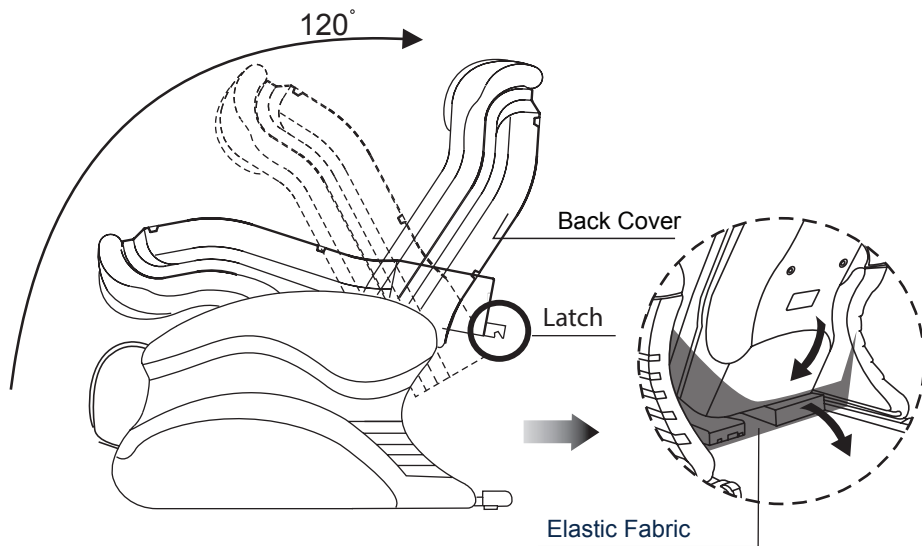
INFINITY

MASSAGE CHAIRS

3

Step 3:

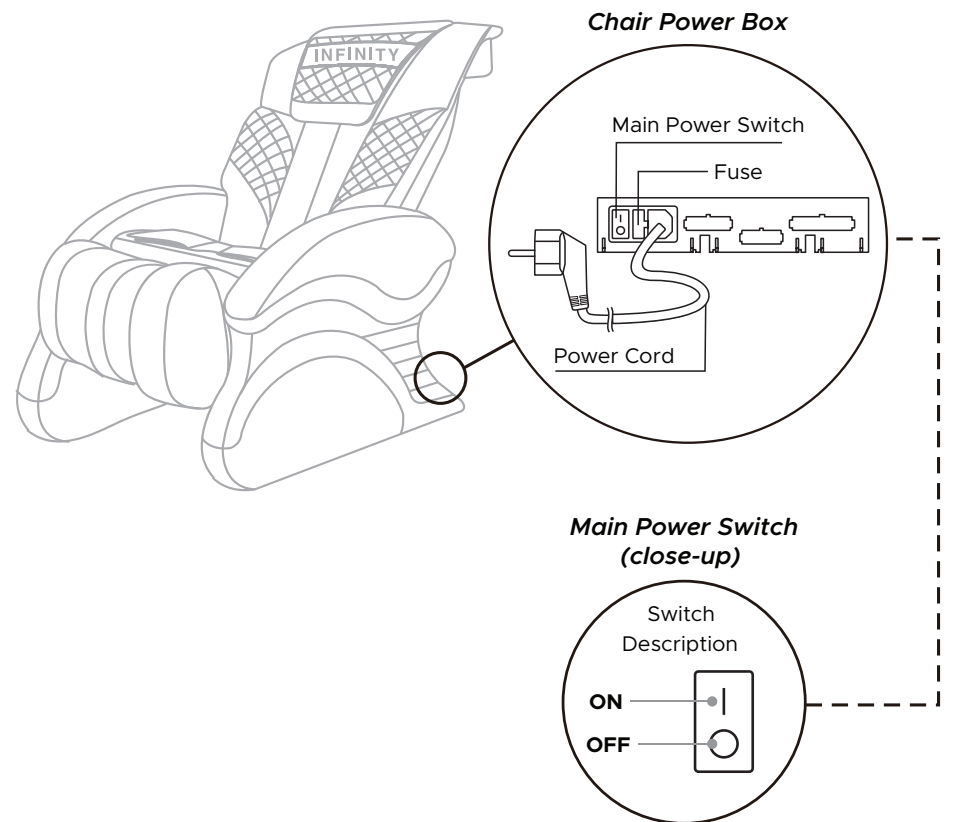
When raising the backrest, please pull the elastic fabric outward to cover the whole back cover until reaching the required position as shown in the below picture. Raise the backrest to approx. 120°, until a "CLICK" Sound is heard, to fix the backrest into position.



4

Step 4:

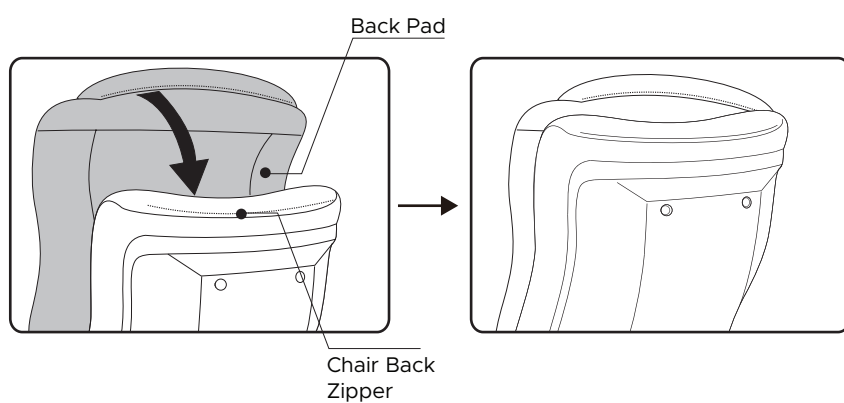
Connect the chair's power cord to a grounded 110V electrical outlet and plug it into the respective port in the chair power box, located on the back side of the base of the chair. Flip the main power switch on.



5

Step 5:

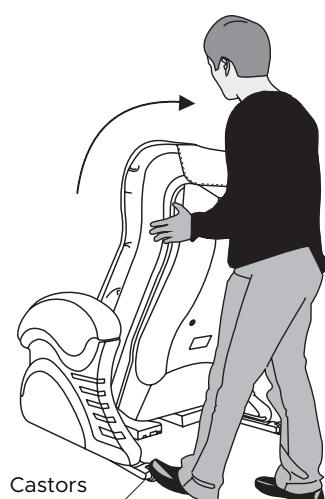
To properly install the back pad, align the zipper on the top of the back pad with the zipper on the chair back and zip together.



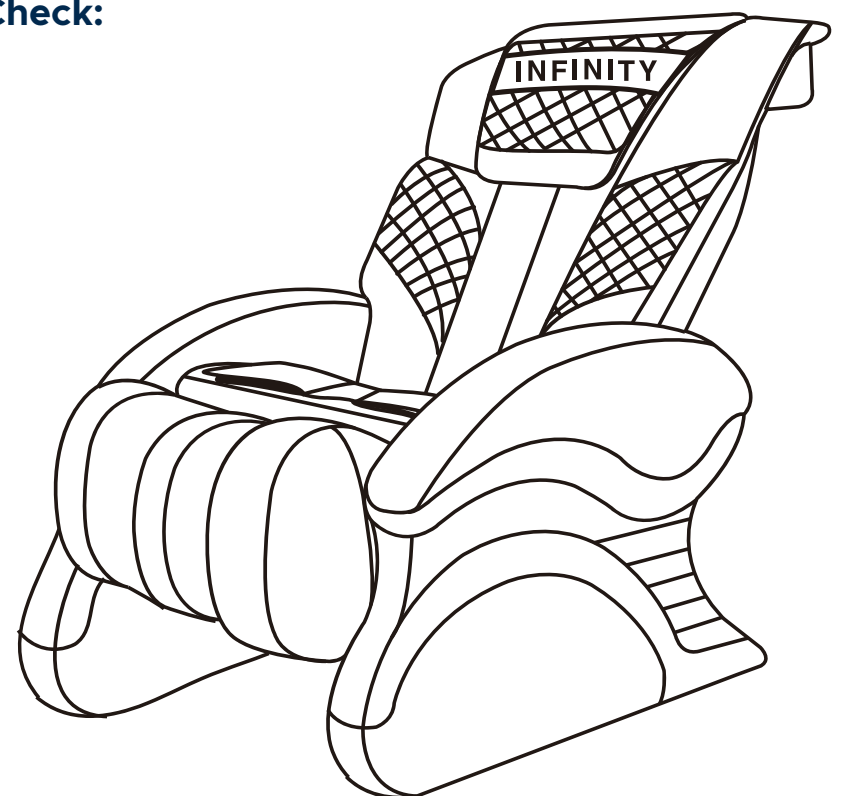
6

Step 6:

To move your chair around, apply pressure to the back of the massage chair from behind to pivot on the Castors. Have a second person up front to guide the Footrest until in the correct position. Gently lower into place.



Final Check:



Power on the remote and select a program to start a session.



Review chair for smooth operation. If things are not operating correctly, review all assembly steps. Call Infinity support at 1-603-910-5000 if you need live US-based support.

You are done; time for a Massage!



SCAN CODE

Register your product at www.infinitymassagechairs.com/warranty to ensure it is in our system. This will simplify the warranty process should you ever need it.

Alternatively, **scan the QR code** to go directly to the URL above.