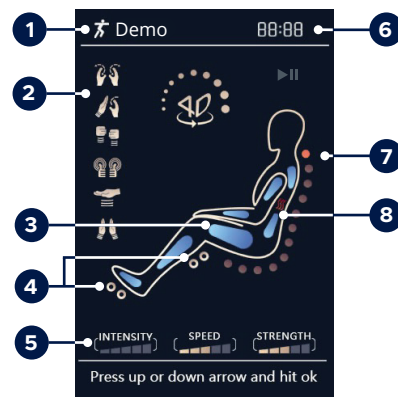


In-Use Screen

After a Massage program is selected, In-use screen displays all settings to that program.

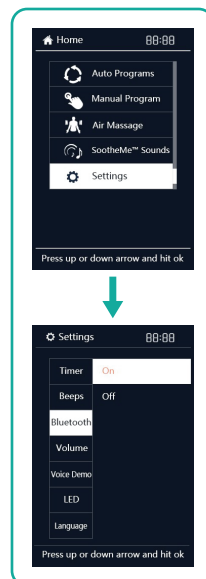


- | | |
|----------------------------|------------------------------------|
| 1 Program | 5 Indicators |
| 2 Active massage technique | 6 Time remaining |
| 3 Active airbags | 7 Back-roller position & direction |
| 4 Active rollers | 8 Lumbar heat indicator |

Bluetooth Audio

Your massage chair includes Bluetooth compatibility so you can play and enjoy your favorite music. To enable Bluetooth connectivity, press **HOME** button on remote control, then use the up or down button to select **Settings**. Press **OK** to select. Use the up or down button to select **Bluetooth**, press right button, then use the up or down button to select desired Bluetooth setting: **On** or **Off**. Press **OK** button to select.

To connect your Bluetooth enabled audio device, go into your audio device settings, navigate to Bluetooth settings and pair with the device named **Riage 4D**. The chair will beep when a connection is made.



SoothMe™ Nature Sounds

No need to find something to stream with on-board SootheMe™ Nature Sounds to choose from. Envelop yourself in soundscapes that are designed to help you relax.

Press **HOME** button on remote control. Select **SoothMe™ Sounds** from Menu display, then use the up or down button to select your desired Nature Sound.

- | | |
|---------------|----------------|
| - White Noise | - Airplane |
| - Ocean Surf | - Car Ride |
| - Crickets | - Fireplace |
| - Rain | - Thunderstorm |
| - Nature | - Windy Night |

Share a photo and tag us:

@Infinitymassagechairs

@infinity_chairs

@Infinitymassagechairs

Don't forget to use **#lovemyinfinitychair**

INFINITY®

72 Stard Road, Seabrook, NH 03874
603-910-5000
www.infinitymassagechairs.com
Version 1.3

INFINITY®

Quick Start Guide

Riage®

4D Massage Chair

INFINITY®

Color Display Screen

Use the directional buttons below to navigate these menu screens. Then press OK to select.

On/Off – Press to power up the remote or power down the remote and return the chair to the exit position.

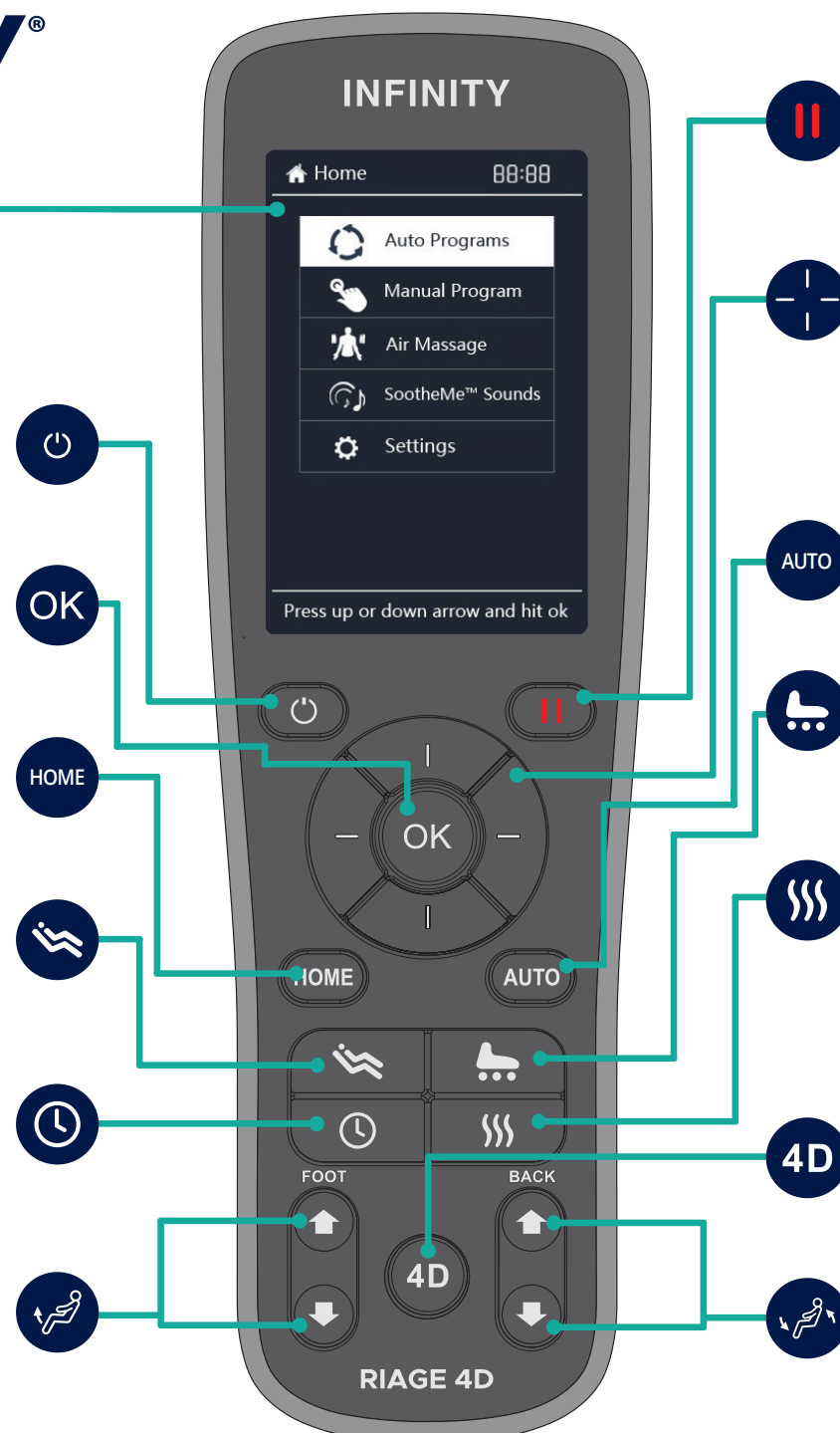
OK – After navigating to the command desired on the display, push OK to confirm selection.

Home – Shortcut to the home page of all menu screens.

Zero Gravity – Press once to enter ZG position 1. Press again to enter ZG position 2. Press once more to return chair to upright position.

Timer – Press button to manually adjust massage program timer. Maximum is 30 minutes.

Feet Adjust – Press and hold up arrow to bring foot rest up, press and hold down arrow to bring foot rest down.



Pause – Press once to pause massage program, press again to resume massage program.

Directional Buttons – Four directional buttons navigate through menu options. While the **In-Use screen** is showing, left and right buttons can be used to adjust *airbag intensity*, and the up and down buttons to adjust *massage speed*.

AUTO – Press this button to cycle through auto programs.

Foot Rollers – Press this button to toggle Dual Reflexology Foot Rollers and Calf Kneading on or off.

Heat – Press to start the heating function. The indicator screen will light up. Press again to turn off the heating function. The indicator will turn off.

4D – Press to increase or decrease maximum 4D intensity of back mechanism. In-use screen displays intensity dial.

Seat Back Position – Press and hold down arrow to recline the seat back, press and hold the up arrow to upright the seat back.