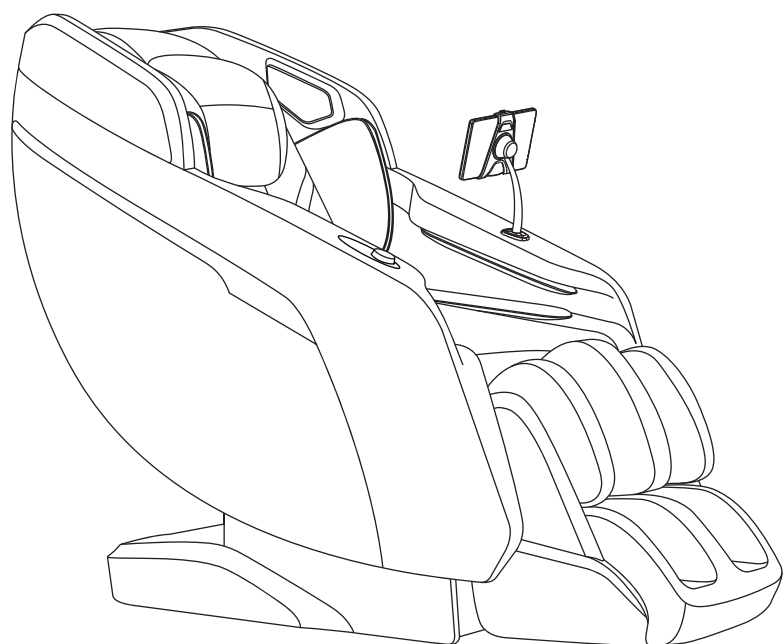




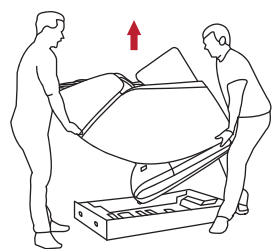
SCAN CODE



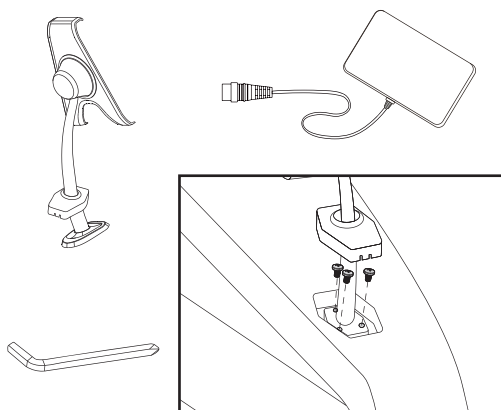
# Assembly Guide

## Kiyomi™ M698 4D Massage Chair

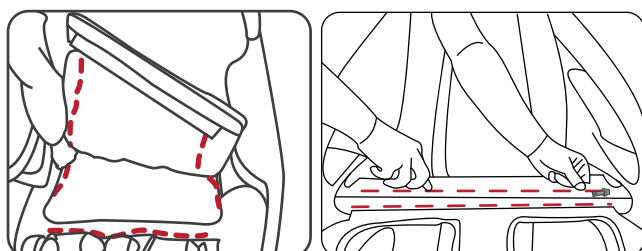
- 3 Step 3:**  
You'll need two people to lift the chair out of the box. Lift from the back and the base, do not grab the chair's arm panels to move or position.



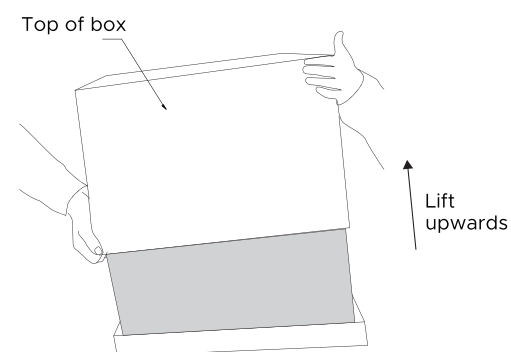
- 5 Step 5:**  
Locate the tablet holder and the tablet. Use the screwdriver to unscrew the 3 pre-installed screws in the tablet holder platform. Place the tablet holder onto the platform, re-screw each of the 3 screws back into place. Gently clip the cover into place over the screws.



- 7 Step 7:**  
Locate the zippers on the front and sides of the seat pad. Start by zipping the right side, then the left, and finish with the front zipper.

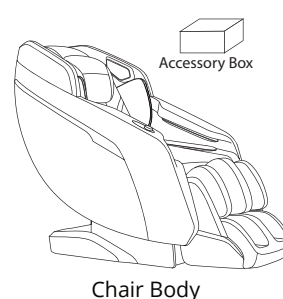


- 1 Step 1:**  
Slide the top of the box and lift upwards. The chair will be positioned in the box with its footrest up. Remove the packaging materials and the protective cover over the chair.

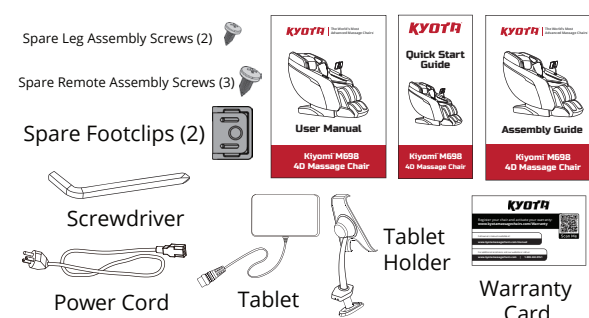


- 2 Step 2:**  
Carefully check the accessory box contents and make sure all items are accounted for.  
**If anything is missing, please contact Kyota Massage Chairs at (603) 910-5333. Do not return to the place of purchase.**

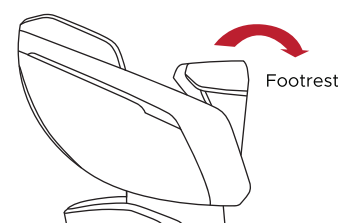
### Box 1 Contents



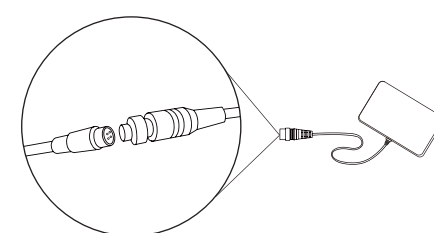
### Accessory Box Contents



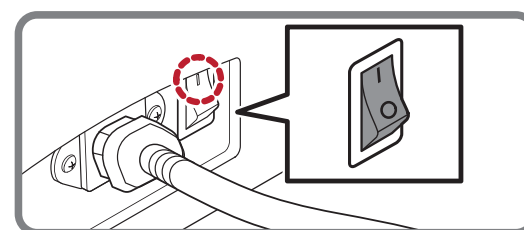
- 4 Step 4:**  
Gently fold the footrest down from the seatpad.



- 6 Step 6:**  
Attach the tablet cord to the connection port on the left side of the chair seat. Be careful to line up the pins and key, then push together when aligned — do not force.



- 8 Step 8:**  
Plug the power cord into the back of the chair, plug the other side into a grounded 110v outlet. Press the power switch to "I" (on). The tablet will power on showing a yellow warning screen. Tap to confirm safety warning. Now, press an auto program on the tablet.



If you wish to use an App to control the chair, download the "Kyota Kiyomi M698" App from the Apple or Google App store and follow pairing instructions found within the App.

Review chair for smooth operation. If things are not operating correctly, review all assembly steps. Call Kyota support at (603) 910-5333 if you need live US-based support.

**You are done; time for a Massage!**



SCAN CODE

Register your product at [www.kyotamassagechairs.com/warranty/registration](http://www.kyotamassagechairs.com/warranty/registration) to ensure it is in our system. This will simplify the warranty process should you ever need it.

Alternatively, **scan the QR code** to go directly to the URL above.