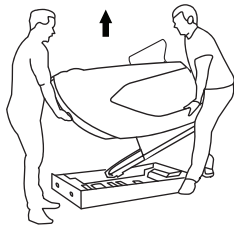


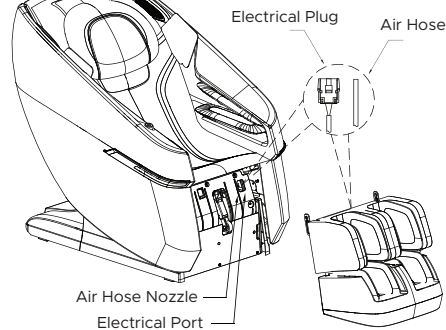
Assembly Guide

Zenyu M338 Massage Chair

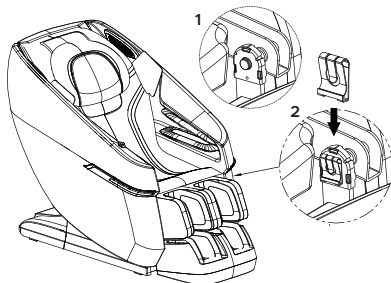
- 2 Step 2:**
You'll need two people to lift the chair out of the box. Lift from the back and the base, do not grab the chair's arm panels to move or position. Lift the footrest from the seat and place it on the floor, next to the chair body.



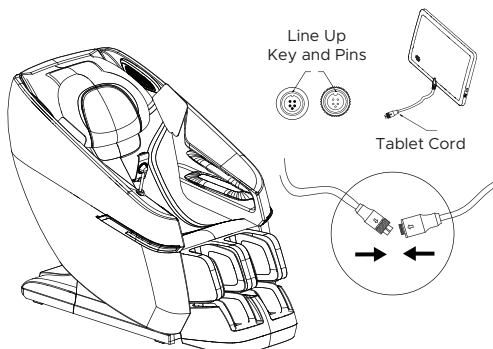
- 4 Step 4:**
On the base of the chair where the footrest will be installed, you will find an electrical port and air hose nozzle. Move the footrest closer towards the chair's base. Plug in both the electrical plug and air hose.



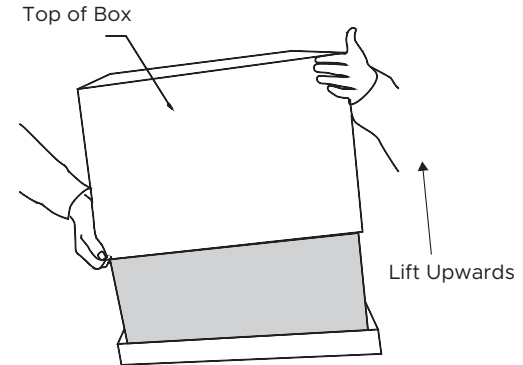
- 6 Step 6:**
Lift the footrest and slide one side of the mounting bracket onto the chair pin. Secure with footrest clip. Align and slide the other side onto the opposite chair pin, center the footrest, and fasten the second clip. There are 2 spare footrest clips in the accessories box.



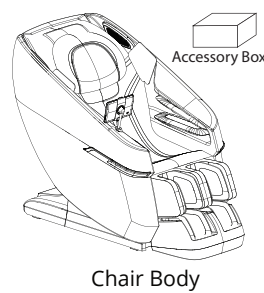
- 8 Step 8:**
Position the tablet into the tablet holder, place in bottom, clip on top. Find the tablet cord in the seat cushion. Align the tablet's key and pins, push in gently, and twist to secure. Turn the chair's power switch to **ON**, then press the power button on the tablet.



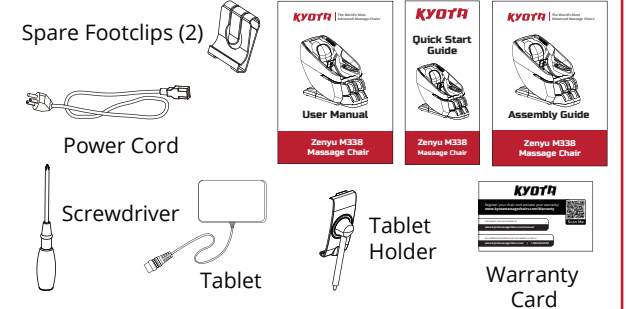
- 1 Step 1:**
Grab the box and lift upwards, place the box and its packaging materials to the side. Carefully check the accessory box contents and make sure all items are accounted for.
If anything is missing, please contact Kyota Massage Chairs at (603) 910-5333. Do not return to the place of purchase.



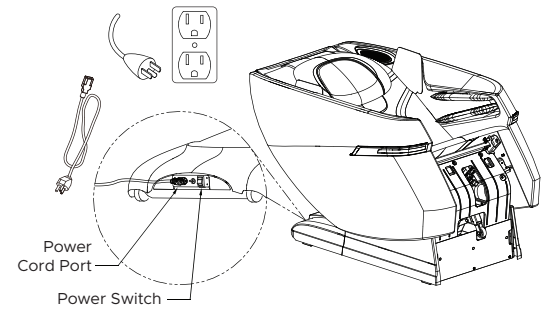
Box 1 Contents



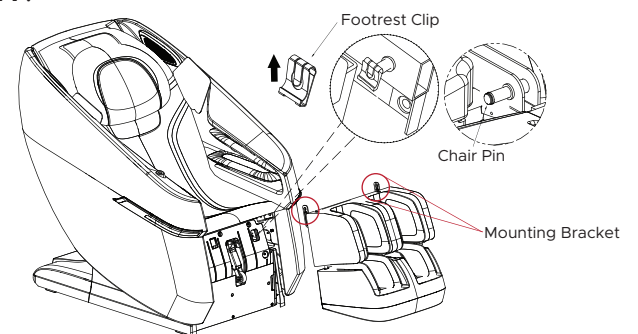
Accessory Box Contents



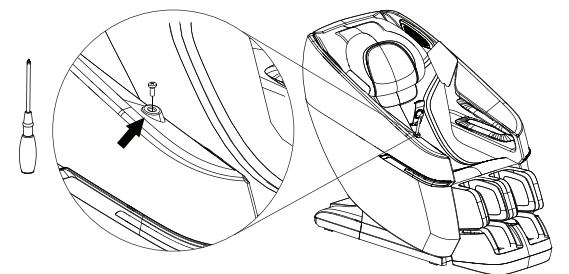
- 3 Step 3:**
Plug the power cord into the back of the chair. Place the other end into a 120V grounded outlet. Turn the chair's power switch to **ON** and let the chair adjust to its upright position. Once upright, turn the power switch to **OFF**.



- 5 Step 5:**
Use your fingers, or a flathead screwdriver to slide up and remove the 2 footrest clips. Locate the mounting brackets on the footrest for chair body installation in next step.



- 7 Step 7:**
Use the screwdriver to remove the bolt from the center of the tablet base, discard the bolt. Hold the base and screw the Tablet holder where the bolt was removed from. Hand tighten.



Optionally, the Quick Start Guide can be hung from the Tablet holder post as you install the tablet holder.

Final Check

Review chair for smooth operation. If things are not operating correctly, review all assembly steps. Call Kyota support at (603) 910-5333 if you need live US-based support.

You are done; time for a Massage!

