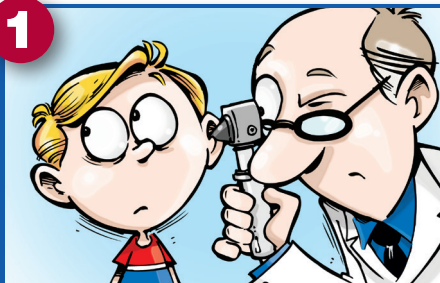


10 Warning Signs of Primary Immunodeficiency

Primary Immunodeficiency (PI) causes children and adults to have infections that come back frequently or are unusually hard to cure. 1:500 persons are affected by one of the known Primary Immunodeficiencies. If you or someone you know is affected by two or more of the following Warning Signs, speak to a physician about the possible presence of an underlying Primary Immunodeficiency.



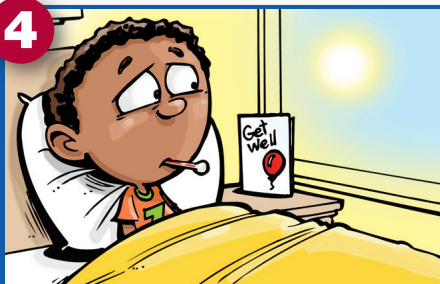
Four or more new ear infections within one year.



Two or more serious sinus infections within one year.



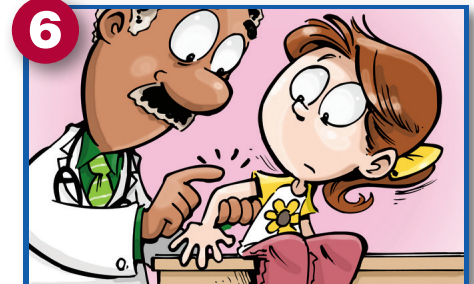
Two or more months on antibiotics with little effect.



Two or more pneumonias within one year.



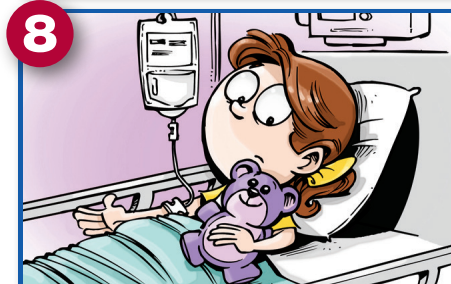
Failure of an infant to gain weight or grow normally.



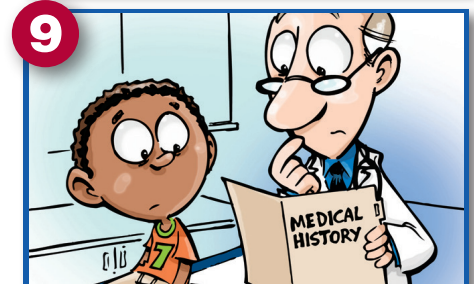
Recurrent, deep skin or organ abscesses.



Persistent thrush in mouth or fungal infection on skin.



Need for intravenous antibiotics to clear infections.



Two or more deep-seated infections including septicemia.



A family history of PI.

Presented as a public service by:



Jeffrey Modell
Foundation

Curing PI,
Worldwide.



Funding was made possible in part by a grant from the U.S. Centers for Disease Control and Prevention (CDC).



National Heart,
Lung, and Blood
Institute (NHLBI)



NATIONAL
CANCER
INSTITUTE



Plasma Protein Therapeutics Association



National Institute of
Allergy and Infectious
Diseases (NIAID)



Eunice Kennedy Shriver
National Institute of Child Health
& Human Development



These warning signs were developed by the Jeffrey Modell Foundation Medical Advisory Board. Consultation with Primary Immunodeficiency experts is strongly suggested. © 2024 Jeffrey Modell Foundation

For information or referrals, contact the Jeffrey Modell Foundation: info4pi.org