

# Trenggalek Fact Sheet

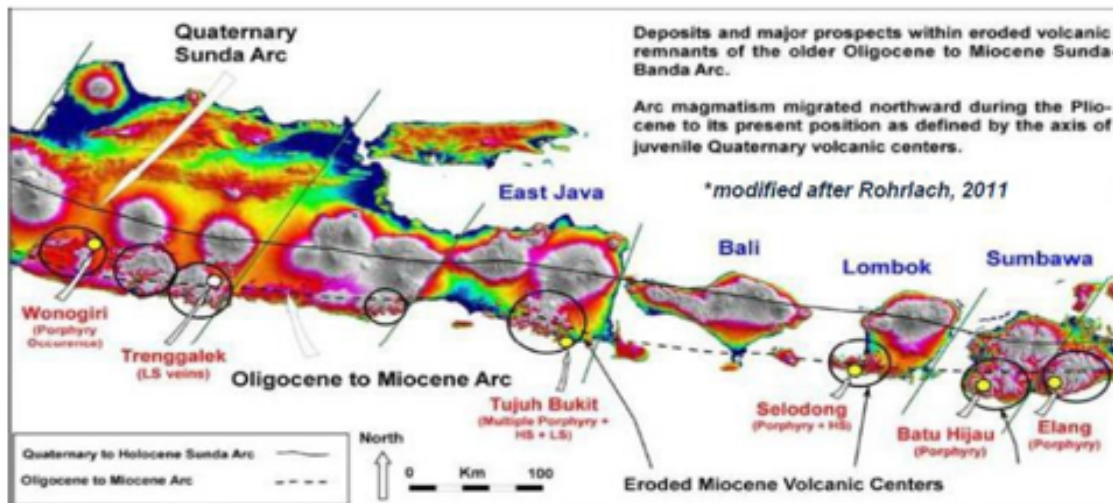
## Table of contents

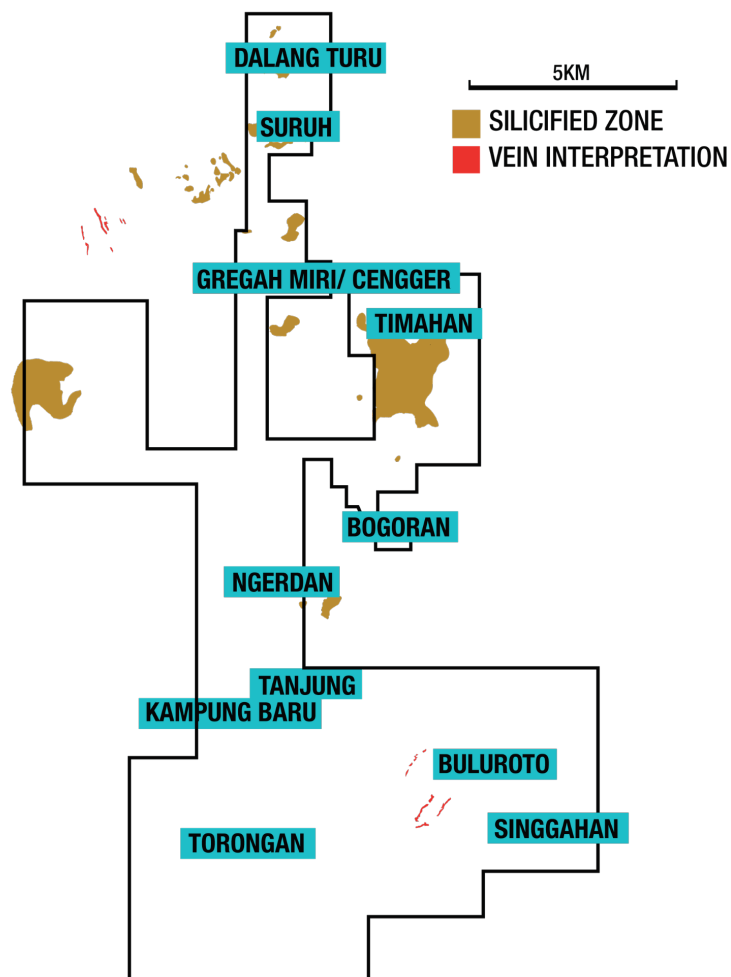
<a href="#">Copper Gold Porphyry and Epithermal Project</a>	<a href="#">2</a>
<a href="#">Similarities to Tujuh Bukit</a>	<a href="#">3</a>
<a href="#">Sumberbening Prospect - Porphyry System</a>	<a href="#">3</a>
<a href="#">Singgahan &amp; Jerambah Prospects –Defined Porphyry Targets</a>	<a href="#">4</a>
<a href="#">Buluroto Prospect - Epithermal and Porphyry System</a>	<a href="#">5</a>
<a href="#">Sentul Prospect - High Grad Epithermal Type AU-AG Veins</a>	<a href="#">6</a>
<a href="#">2024 Phase 1 Drill Plan</a>	<a href="#">7</a>

# Trenggalek Fact Sheet

## Copper Gold Porphyry and Epithermal Project

- **Advanced 12,813-hectare** IUP-OP (Operation Mining Permit) highly prospective for epithermal and porphyry-related gold and base metal deposits.
- Identified by Indonesian Government as a **Top 3 priority greenfield gold project**.
- §Previously explored by PT Aneka Tambang (1990s) and then Arc Exploration Ltd in a JV with Anglo American (2012-2014) and PT Dunusa Tambang Nusantara (2015 – 2018).
- Historic exploration included:
  1. **17,786m of drilling**
  2. **3,675km** airborne magnetic and radiometric survey.
  3. Surface geochemistry survey of **>10,500** soil and **>5,000** rock samples.
  4. Ground IP/Resistivity.

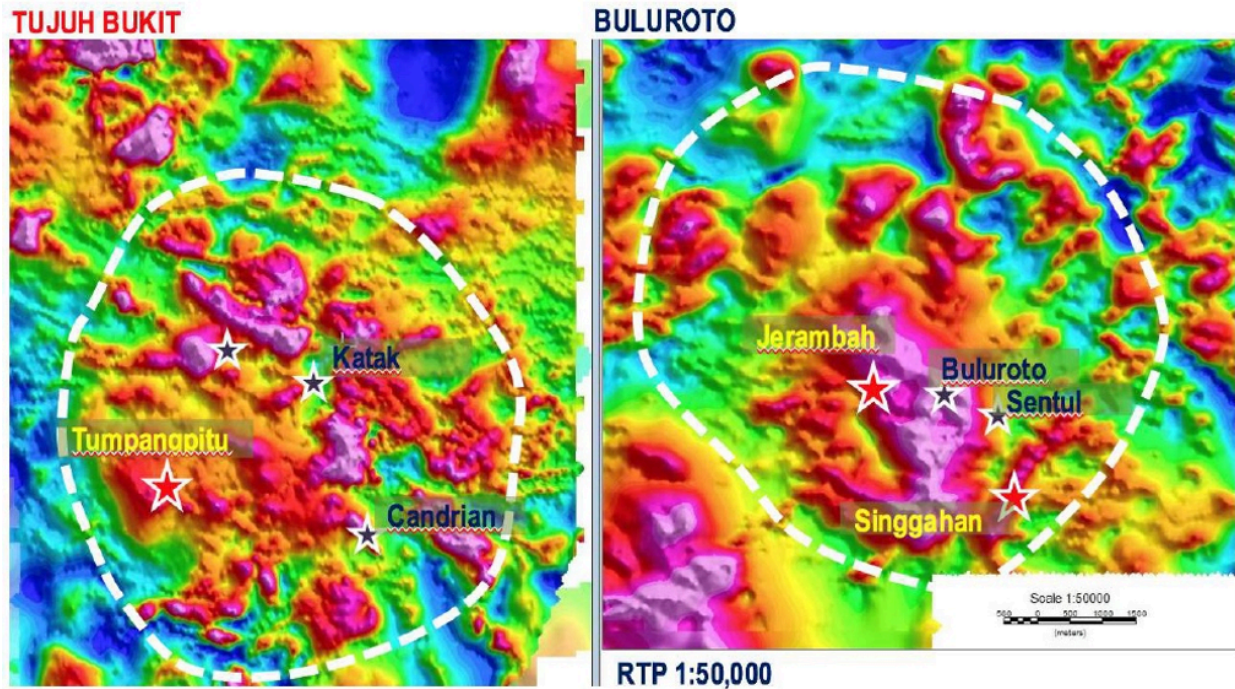




## Similarities to Tujuh Bukit

Trenggalek exhibits a **similar sized volcanic centre** (5.6km) to the nearby Tujuh Bukit deposit (30.1M oz Au & 18.9Bn lb Cu) cut by major structural lineaments, annular medium to high intensity magnetic features, with zones of hydrothermal alteration related to discrete areas of low magnetics.

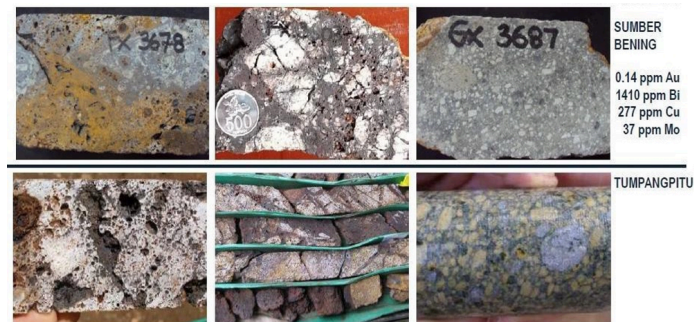
Petrological studies completed on selected core samples from Trenggalek has confirmed porphyry-type mineralisation and alteration for selected drill targets. **These rock types found at Trenggalek are similar to those rocks hosting the Tujuh Bukit and Batu Hijau deposits.**



**Above:** Images showing comparison of the RTP magnetic anomalies between the Tujuh Bukit project and the Trenggalek project areas.

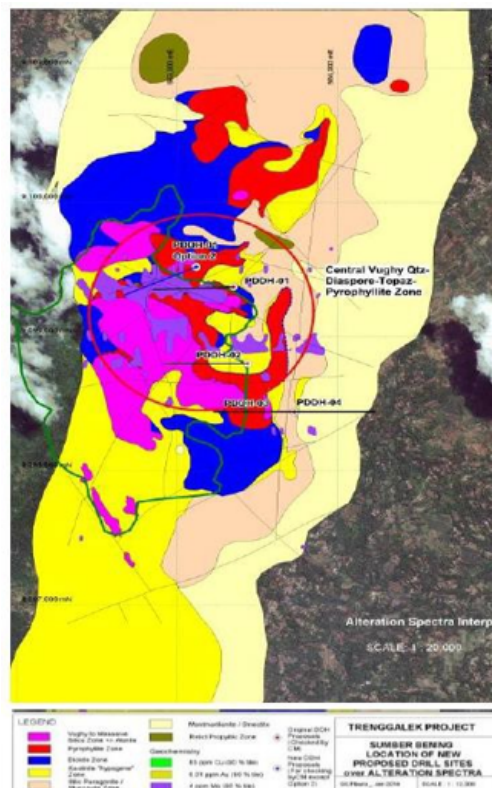
## Sumberbening Prospect - Porphyry System

- Anglo's top priority prospect at Trenggalek.
- Similar geological setting as Tujuh Bukit.
- High-sulphidation Au-Cu and porphyry Cu-Au type resource potential
- Characterised by 3km x 2km area of advanced argillic alteration.
- Sumber Bening prospect remains undrilled

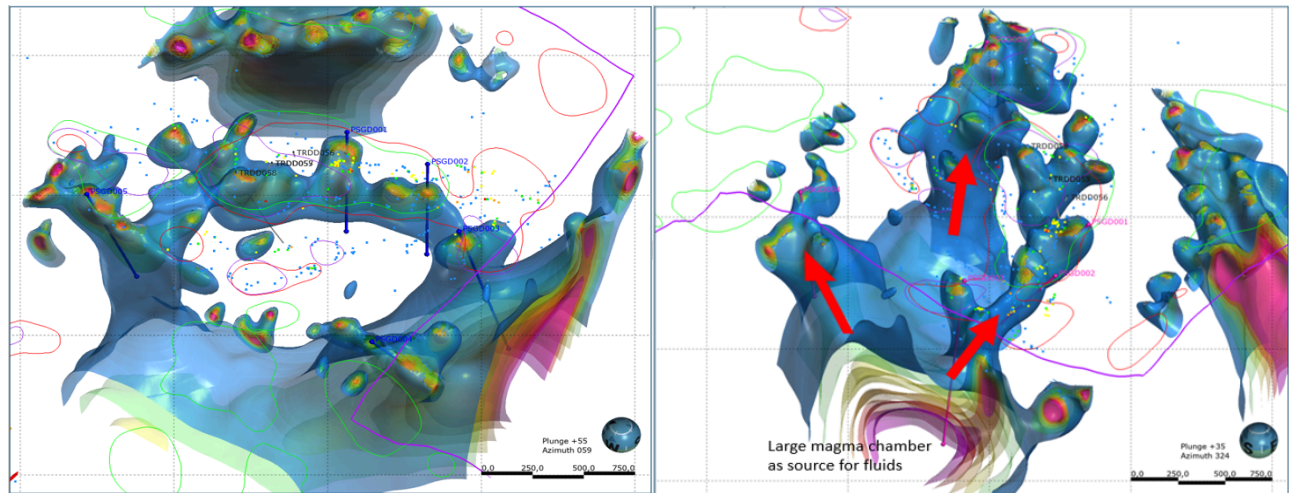


## Singgahan & Jerambah Prospects –Defined Porphyry Targets

- **Singgahan** - Four drill holes totaling 1,541.7m have been completed and this includes one inclined diamond hole (TRDD058) to a depth of **795.8m**.
- Jerambah is a copper-gold porphyry target that has four drill holes completed totaling 2,445m and this includes one inclined diamond hole (TRDD054) to a depth of **1,022.3m**.



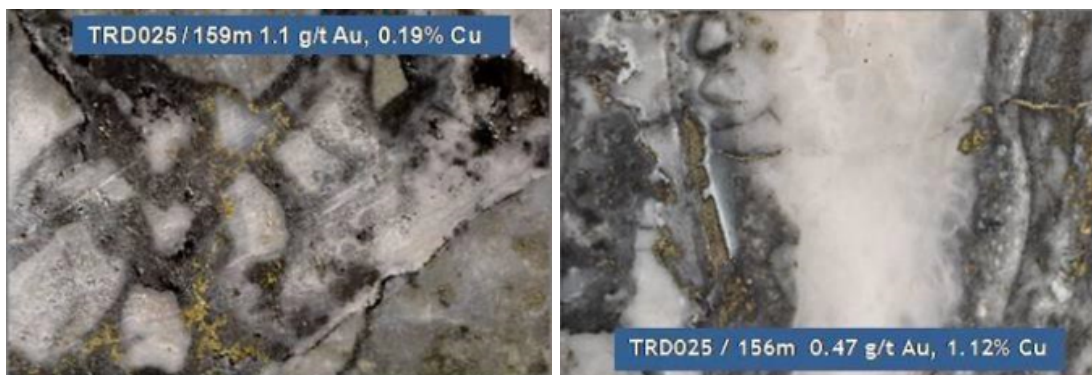


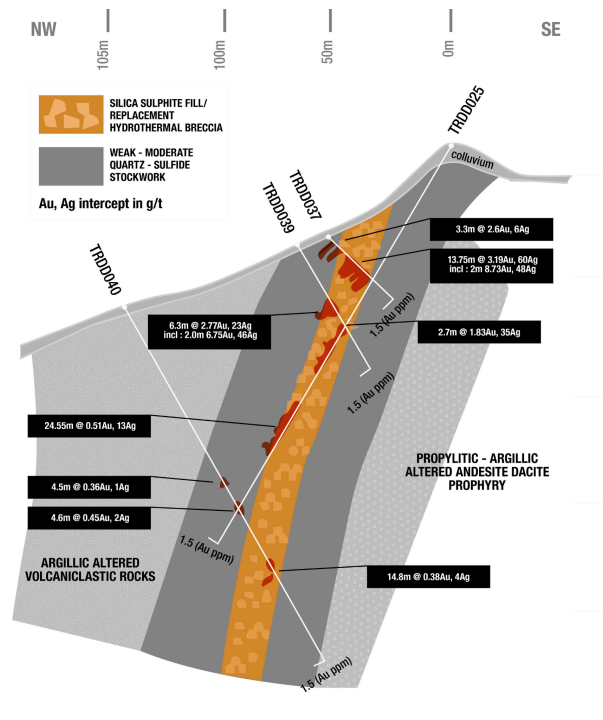


**Above:** 3D model of Singgahan and Jerambah prospects showing large magma chamber as fluid source for upwelling volatile-rich porphyries.

## Buluroto Prospect - Epithermal and Porphyry System

- The Buluroto prospect holds potential for a porphyry related gold and copper target based on mineralisation.
- Results from previous **11 hole 1,380.4m** scout programs at Buluroto intersected significant Cu-Au mineralisation within an up to 75m wide zone of crackle breccia and stockwork veins.





## SIGNIFICANT DRILL INTERCEPTS INCLUDE:

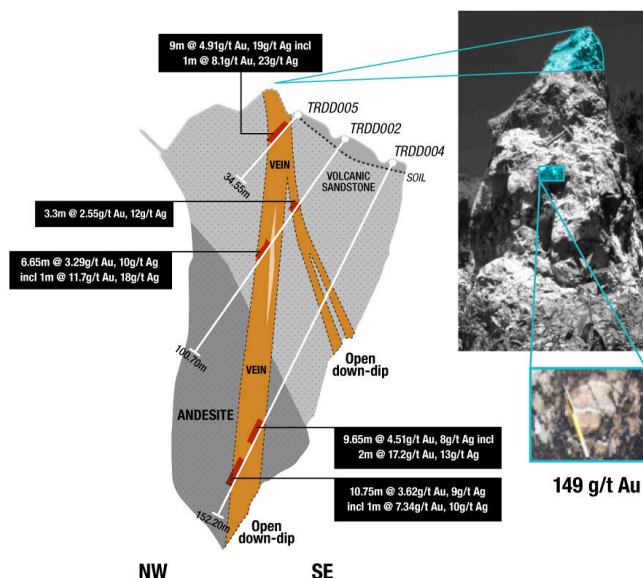
**TTRDD032:** 13.7m @ 3.2 g/t Au, 60 g/t Ag incl 2m @ 8.7 g/t Au, 48 g/t Ag from 13.7m.

**TRDD025:** 24.5m @ 0.51 g/t Au, 0.21% Cu and 16 g/t Mo from 138.5m.

## Sentul Prospect - High Grad Epithermal Type AU-AG Veins

- The Sentul area demonstrates polyphase low sulphidation type epithermal quartz-chalcedony-sulphide veins/breccia up to **10m-15m wide** and having greater than **5km-10km collective strike length** consisting of Au + Ag.
- Sentul is a very large gold-bearing epithermal vein system, initial scout drilling of **36 holes totaling 4,696.20m** has only tested total vein-trace length of about 650m, this represents approx 10 – 20% of the vein system.
- The vein system is complex and open in all directions.
- There is sufficient volume to indicate that it may host a large gold resource in multiple ore shoots with further potential for high-grade veins at depth.

#### ABOUT 5-10KM COMPOSITE STRIKE LENGTH SEGMENTED VEIN SYSTEM



#### SIGNIFICANT DRILL INTERCEPTS INCLUDE:

**TRDD004:** 9.65m @ 4.51 g/t Au, 8 g/t Ag incl 2m @ 17.2 g/t Au, 13 g/t Ag from 111.35m and a further 10.75m @ 3.62 g/t Au, 9 g/t Ag incl 1m @ 7.34 g/t Au, 10 g/t Ag from 127.95m.

**TRDD002:** 6.65m @ 3.29g/t Au, 10g/t Ag incl 1m @ 11.7g/t Au, 18g/t Ag from 49.35m.

**TRDD005 :** 9m @ 4.91g/t Au, 19g/t Ag incl 1m @ 8.1g/t Au, 23g/t Ag from 5.8m.

#### 2024 Phase 1 Drill Plan

- The Phase 1 scout drilling programme will test 4 of the 6 porphyry-related systems identified within the Trenggalek IUP, and includes:
  - Sumber Bening** (high-sulphidation/porphyry target) – **4 Holes for a total of 2600m** to test both near surface high sulphidation type alteration and deeper porphyry targets defined by 3D magnetic inversion modeling.
  - Jerambah-Torong** (porphyry target) – **3 Holes for a total of 2500m** – to test both near surface high sulphidation type alteration and deeper porphyry targets



defined by 3D magnetic inversion modeling. One hole will also test the depth extension of a chalcopyrite-bearing quartz breccia at Buluroto that may have a deeper connection to the Jerambah porphyry target.

3. **Singahan** (porphyry target) – **5 Holes for a total of 3200m** – to test select porphyry targets defined by surface rock samples and 3D magnetic inversion modeling. Five separate porphyry targets have been defined for a potential total of 262 Mt.