

**argus**<sup>®</sup>  
thermal imaging from e2v

SAFETY AND  
INNOVATION

**argus**<sup>®</sup>  
thermal imaging from e2v

**NORTHERN EUROPE**  
SALES AND SERVICE CENTRE

Argus  
e2v, 106 Waterhouse Lane  
Chelmsford  
Essex  
CM1 2QU  
England

T +44 (0)1245 453429  
F +44 (0)1245 453396  
E-mail: argus.enquiries@e2v.com

**SOUTHERN EUROPE**

Argus  
e2v sas, 16 Burospace  
F-91 572 Bièvres  
Cedex  
France

T +33 (0)1 6019 5500  
F +33 (0)1 6019 5529  
E-mail: argus.enquiries-fr@e2v.com

**AMERICAS**  
SALES AND SERVICE CENTRE

Argus  
e2v inc, 520 White Plains Road  
Suite 450  
Tarrytown  
NY 10591  
USA

T: +1 (914) 592 6050 or 1-800-342-5338  
F: +1 (914) 592-5148  
E-mail: argus.enquiries-na@e2v.com

**ASIA PACIFIC**

Argus  
e2v, 11/F  
Onfem Tower  
29 Wyndham Street  
Central Hong Kong

T +852 3679 364 8/9  
F +852 3583 1084  
E-mail: argus.enquiries-ap@e2v.com



For more information, or to request a trial of  
any of the argus thermal imaging cameras go to

**argusdirect.com**



**TT** TYPE  
OFFICER PATROL



## TT TYPE OFFICER PATROL

PROTECT OFFICERS / CATCH CRIMINALS / PREVENT CRIME



### THE TT TYPE IS A FULL-SPEC THERMAL IMAGING CAMERA, SPECIFICALLY DESIGNED FOR OFFICER PATROL.

Argus® is an e2v brand focused on designing and manufacturing the highest quality thermal imaging cameras on the market.

Argus thermal imaging technology is a cost-effective addition to your law enforcement team, enabling officers to detect hidden dangers, evidence and absconding criminals.



Argus Handheld Thermal Imaging Cameras (TICS) are essential in the fight against crime, especially at night or in zero visibility conditions. The Argus TT Type will expose criminals that are camouflaged or hiding in shadows or bushes, otherwise invisible to the naked eye.

Argus cameras are designed and manufactured using European sourced components, allowing the cameras to be available to the wider export market, and are not subject to the USA ITAR controls (UK export applies).

### KEY APPLICATIONS

- Fugitive search
- Border surveillance
- Detecting evidence
- Routine patrols
- Training and assessing
- Detect hidden compartments
- Recently used vehicle analysis
- Officer safety
- Search and rescue
- Occupancy evaluation
- Collision investigation
- Forensic evidence
- Mobile vehicle surveillance
- Detecting residential cannabis factories

### KEY FEATURES

#### Unparalleled image quality

The 320 x 240 sensor option provides the highest detail for demanding requirements, enhanced with Argus proprietary signal processing algorithms, providing an excellent image for detailed operations.

#### Video output

A standard video out connector gives the ability to stream video directly from the camera.

#### USB connectivity

All images and video are stored on a removable microSD card. The removable microSD ensures that the camera does not need to be taken out of action whilst evidence is retrieved.

#### Image and video replay

Images and videos can be played back on the camera using the on-screen menu.

#### On-screen set-up menu

The Argus TT Type on-screen menu allows the user or organisation to adjust various camera settings using the menu buttons.

#### Customisable start-up screen

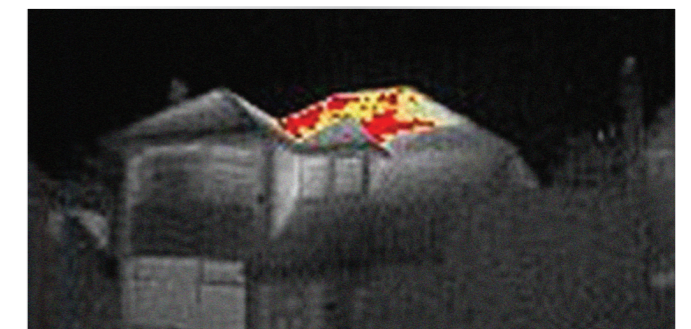
Organisation names and logos can be displayed at power-up for asset tracking and/or personalisation.



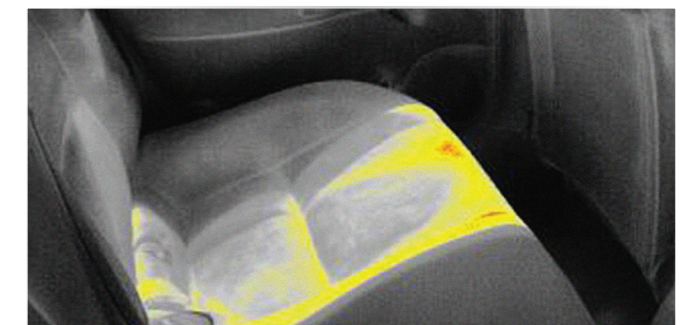
The Argus TT Type can be customised to suit the needs of your team, including upgrades and accessories to ensure you get the most from your thermal imaging camera.



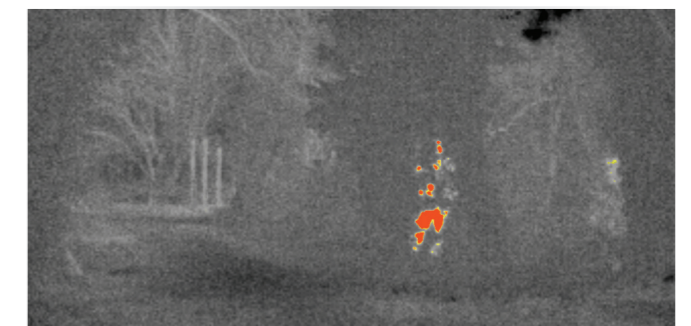
Searching the crime scene



Cannabis farm detected in the loft of a residential house



Occupancy evaluation



Fugitive hiding in light foliage

To find out more, or to request a trial go to:

[ARGUSDIRECT.COM](http://ARGUSDIRECT.COM)