

## 3300 Series Rugged Seal Meter Relay

- Wide Variety of Control, Alarm, and Limit Use
- Calibration Not Affected by Steel Panel Mounting
- Rugged Metal Case for Rigorous Environments



### Ordering Information -

AC Voltmeters Rectified, Self-Shielding Movement					
Range	Approx. Resistance (ohms)	Model/Size and Catalog Number			
		3-1/2" Model 3343AIXA		4-1/2" Model 3344AIXA	
		Single Set point (High Limit)	Dual Set point	Single Set point (High Limit)	Dual Set point
0 - 10	200k	21675	21635	21679	21639
0 - 150	3M	21676	21636	21680	21640
0 - 300	6M	21681	21641	21682	21642

<> Available on special order

DC Microammeters, Self-Shielding Movement					
Range	Approx. Resistance (ohms)	Model/Size and Catalog Number			
		3-1/2" Model 3323AIXA		4-1/2" Model 3324AIXA	
		Single Set point (High Limit)	Dual Set point	Single Set point (High Limit)	Dual Set point
0 - 25	2k	21658	21618	<>	<>
0 - 50	1k	21659	21619	21666	21626
0 - 100	500	21660	21620	21667	21627

<> Available on special order

DC Milliammeters, Self-Shielding Movement					
Range	Approx. Resistance (ohms)	Model/Size and Catalog Number			
		3-1/2" Model 3323AIXA		4-1/2" Model 3324AIXA	
		Single Set point (High Limit)	Dual Set point	Single Set point (High Limit)	Dual Set point
0 - 1	50	21661	21621	21668	21628

## 3300 Series Rugged Seal Meter Relay

### Ordering Information -

DC Millivoltmeters, Self-Shielding Movement					
Range	Approx. Resistance (ohms)	Model/Size and Catalog Number			
		3-1/2" Model 3323AIXA		4-1/2" Model 3324AIXA	
		Single Set point (High Limit)	Dual Set point	Single Set point (High Limit)	Dual Set point
0 - 50	1k	21663	21623	21670	21630

DC Voltmeters, Self-Shielding Movement					
Range	Approx. Resistance (ohms)	Model/Size and Catalog Number			
		3-1/2" Model 3323AIXA		4-1/2" Model 3324AIXA	
		Single Set point (High Limit)	Dual Set point	Single Set point (High Limit)	Dual Set point
0 - 1	20k	21664	21624	21671	21631
0 - 50	1M	21665	21625	21672	21632

DC Ammeters, Self-Shielding Movement					
Range	Approx. Impedance (ohms)	Model/Size and Catalog Number			
		3-1/2" Model 3323AIXA		4-1/2" Model 3324AIXA	
		Single Set point (High Limit)	Dual Set point	Single Set point (High Limit)	Dual Set point
0 - 5	.01	21662	21622	21669	21629

AC Ammeters Rectifier, Self-Shielding Movement					
Range	Approx. Impedance (ohms)	Model/Size and Catalog Number			
		3-1/2" Model 3343AIXA		4-1/2" Model 3344AIXA	
		Single Set point (High Limit)	Dual Set point	Single Set point (High Limit)	Dual Set point
0 - 5	.01	21673	21633	21677	21637

Percent Motor Load, Self-Shielding Movement				
Scale	Range F.S.	Catalog Number Single Set point (High Limit)	Catalog Number Double Set point	Model
0-150 *	10 VAC	21684 *	21644 *	3344 AIXA 4-1/2"
0-150 **	5 amp AC	21683 **	21643 **	3344 AIXA 4-1/2"
0-150 **	5 amp AC	35096 **	35097 **	3343 AIXA 3-1/2"
* Use with Model 186 current transformers				
** Use with current transformers				

## 3300 Series Rugged Seal Meter Relay

Specifications	
<b>Accuracy</b>	AC: ±3% of full scale; DC: ±2% F.S.
<b>Movement</b>	Annular, self-shielding
<b>Suspension</b>	Pivot and jewel
<b>Tracking</b>	±3%
<b>Repeatability</b>	Within 0.5% F.S.
<b>Shielding</b>	Calibration is unaffected by magnetic panel mounting
<b>Response Time</b>	1.5 seconds maximum above 10mA
<b>Overload (1 sec.)</b>	AC: 7 amps; DC: 10 times F.S.
<b>Overload (Continuous)</b>	AC: 7 amps; DC: 1.5 times F.S.
<b>Dial</b>	Sharp clear scale. Each dial arc is calibrated to track the specific type of movement used
<b>Case</b>	Sealed metal, plastic window
<b>Voltage Drop</b>	50mV
<b>Pointer</b>	Black, knife-edge
<b>Scale Length</b>	4.05" (103.0mm)
<b>Net Weight</b>	17oz (0.48kg)
<b>Control Point(s)</b>	Single, high limit, 0-100% of arc; Double, low limit
<b>Adjustments</b>	0-95% of arc; high limit 5-100% of arc Adjustable to within 4° of each other
<b>Switching</b>	Within 1% of indication
<b>Differential</b>	"On," "Off" difference is within 0.5% of F.S.
<b>Auto/Manual Reset</b>	Latching function can be enabled independently for each relay by removing jumpers on terminal block
<b>Contacts/Output Relay</b>	DPDT relay contacts for each control point; each set of contacts rated at 5 amps, 120/240 VAC resistive
<b>Frequency Response</b>	50 to 60 Hz Special calibration available at 400 Hz, contact Simpson Electric
<b>Power</b>	108-132 VAC; 50-400Hz; 215-245 VAC available on request, contact Simpson Electric
<b>Operating Temperature</b>	+41°F to 122°F (5°C to +50°C)
<b>Circuit-to-Ground Voltage</b>	250V rms maximum
<b>NOTE:</b>	DC meters meet ANSI specification C-39.1

## 3300 Series Rugged Seal Meter Relay

### Temperature Meters

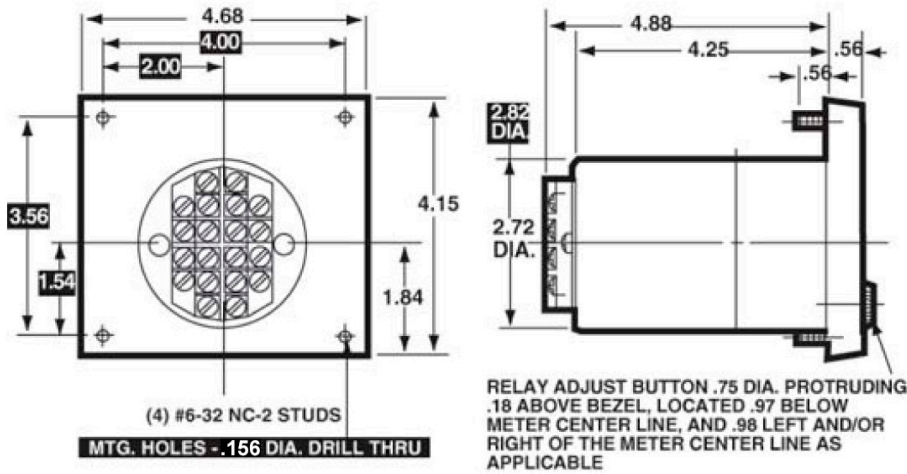
Specifications	
Accuracy	±2% F.S.
Movement	Annular, self-shielding
Suspension	Pivot and jewel
Adjustments	Single, 0-100% of arc; double, low limit 0-95% of arc; high limit, 5-100% of arc, Adjustable to within 4° of each other.
Switching	With 1% of indication
Differential	"On", "Off" difference is within 0.5% of F.S.
Auto/Manual Reset	Latching function can be enabled independently for each relay by removing jumpers on terminal block.
Contacts/Output Relays	DPDT relay contacts Each set of contacts rated at 5 amps, 115 VAC
Tracking	±3%
Repeatability	2%
Shielding	Calibration is unaffected by magnetic panel mounting
Response Time	1.5 seconds maximum
Overload (1 sec.)	10 times F.S.
Overload (Continuous)	1.5 times F.S.
Dial	Sharp clear scale. Each dial arc is calibrated to track the specific type of movement used.
Case	Sealed metal, plastic window
Voltage Drop	50mV
Pointer	Black, knife-edge
Scale Length	4.05" (103.0mm)
Net Weight	17oz (0.48kg)
Power	108-132 VAC; 50-400 Hz; 215-245 VAC available upon request; contact Simpson Electric
Operating Temperature	32°F to +122°F (0°C to +50°C)
Circuit-to-Ground Voltage	250 RMS maximum

### Ordering Information -

Temperature Range	Thermocouple Type	Catalog Number Model# 3324 AIXA 4-1/2"	
		SSP	DSP
0 to 300°F (0°C to +149°C)	Type J	21651	21611
0 to 500°F (0°C to +260°C)		21652	21612
0 to 750°F (0°C to +399°C)		21653	21613
0 to 1000°F (0°C to +538°C)		21654	21614
0 to 1500°F (0°C to +815°C)	Type K	21655	21615
0 to 2000°F (0°C to +1093°C)		21656	21616
0 to 2500°F (0°C to +1371°C)		21657	21617
Thermocouples are not supplied. Available separately from Accessory Section			

**Dimensions**

**4 - 1/2" - Model 3344AIXA & 3324AIXA**



**1** = Panel Meter Cut-out Dimensions

**3 - 1/2" - Model 3343AIXA & 3323AIXA**

