

# Door Adjustment Instructions

## Bretford SmartDeck

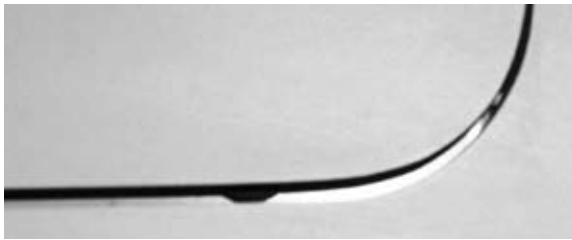
### TROUBLE SHOOTING DOORS THAT WILL NOT STAY CLOSED

Bretford performs quality control tests on all of our products but the shipping process may loosen screws on the SmartDeck which can cause problems latching the door closed. Should this happen there are two simple adjustments you can perform which should rectify the problem.

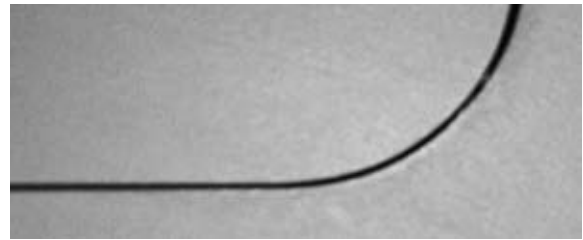
### TOP DOOR ADJUSTMENT

#### INSPECTION OF DOOR POSITION

If the monitor door is positioned back, this can inhibit the latch from catching properly and will need to be adjusted. Perform a visual inspection of the table top with the door in the down position. The spacing at the front edge of the door should be similar to the spacing on the sides of the door. If there is a large gap at the front, the door needs to be loosened and pulled forward to close the space.

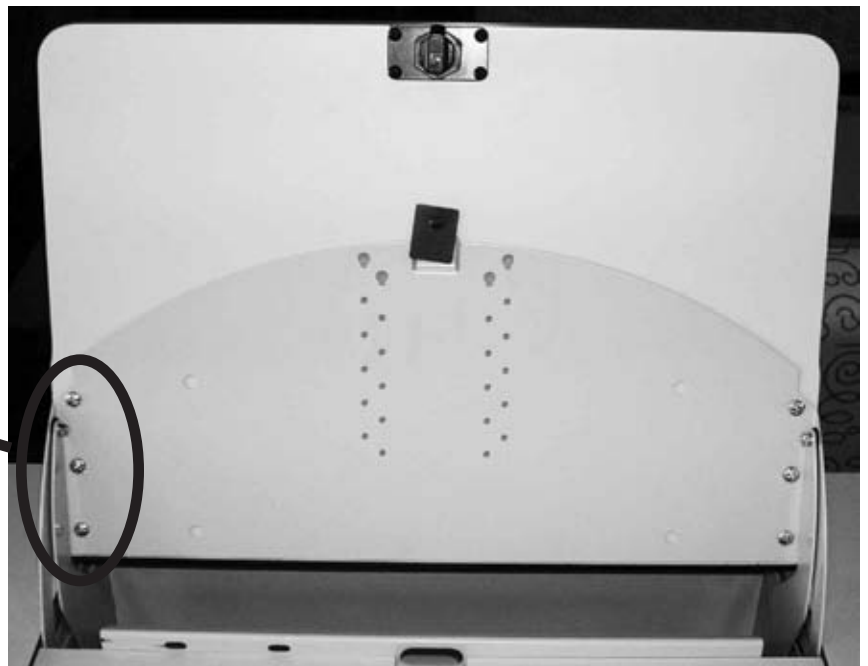


*Monitor door in wrong position with gap at the front edge.*



*Monitor door in correct position with even spacing on the front and side edges.*

- 1 Extend the door to the fully open position.
- 2 Loosen the six phillips head screws. You do not need to remove the monitor to perform this task.
- 3 Grab the door at the latch and pull the door panel up as far as it will go.
- 4 Tighten the six screws and re-examine the spacing.



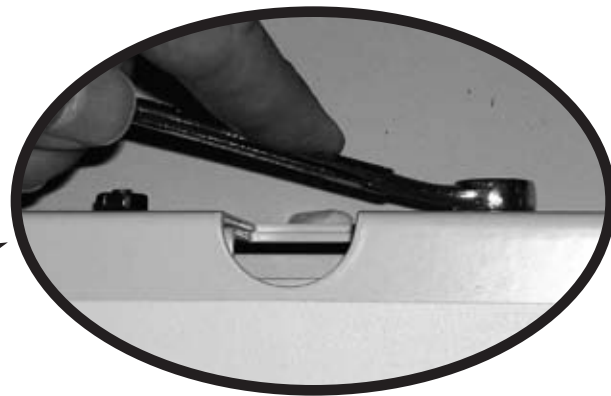
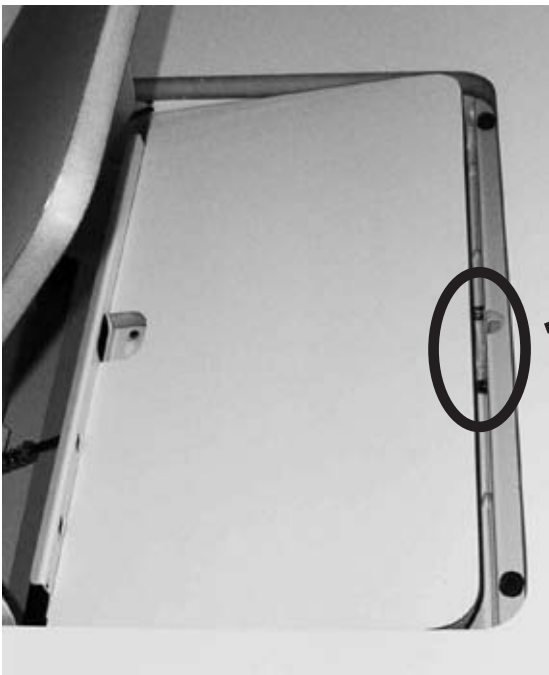
# Door Adjustment Instructions

## Bretford SmartDeck

### LATCH BRACKET ADJUSTMENT

#### INSPECTION OF THE LATCH BRACKET POSITION

If the latching bracket is not in the right position this can prevent the latch from catching properly. When the monitor door is closed, the surface between the door and the work surface should almost be level with one another. If you can feel anything more than a slight difference in the surface levels then you should adjust the latching bracket up or down to level the two surfaces. In the case of the monitor door not closing properly, the latching bracket is probably too low. In the case of the monitor door being difficult to open when the latch is released, then the latching bracket is probably too high.



- 1 Partially open the monitor door so that the keyboard shelf does not fully rise into position.
- 2 Locate the latch bracket and two bolts located in the center front of the door frame. Using a 3/8 wrench, loosen the nuts. Do Not Remove the nuts.
- 3 Using the front plate, slide the bracket up or down (depending on your adjustment) and tighten the nuts.
- 4 Recheck the surface level and test door latch.



*The latch bracket is located behind the front edge table skirt in the center of the SmartDeck bucket.*



*Slide the latch bracket up or down using the front plate located behind the front edge table skirt.*