

## Preventive Maintenance for Bretford Smartdeck Units

Your Bretford “Smartdeck” unit is designed to give years of service and security. Like any mechanical device, some routine maintenance is required to keep your unit performing perfectly for years to come.

Lubricating oil inside the piston keeps the unit sealed and operating properly. While there is no outside lubrication possible, if the unit will be sitting for more than a month, opening and closing the Smartdeck a minimum of three times in a row, once a month, will keep the seal lubricated and extend the life of the piston.

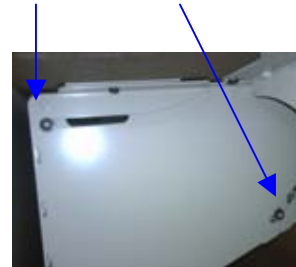
### **Every six months**

Visually inspect the unit for loose or missing fasteners, and damage to the sealing profiles. Check mounting screws on the monitor mount and legs and tighten as necessary.

Visually inspect the level of the flip top for shifting.

Open the Smartdeck partway and check for obstructions such as wires that are not properly secured and may be pinched.

From the underside of the table inspect for any loose or missing push nuts and/or bearing washers.



Lubricate the sliding assembly by wiping a small amount of white lithium grease on the inside of the bucket slots (2 slots on each side of each bucket).

Rear slot

Front slot

