



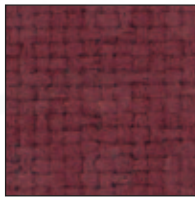
Fabric Collection for 38201, 38202, 38218, 38234, 38244, 38245, 38273, & 38276

- Fabric is 100% Marquesa Lana (Polyolefin) heavy duty fiber, with outstanding durability
- Seats and backs are filled with fire-resistant foam that meets California 117 fire rating
- Fabrics are Teflon®-coated

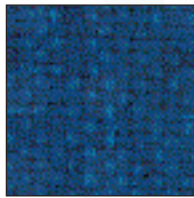
Grade 1 samples (family):



Black (Basic)



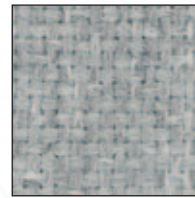
Burgundy (Basic)



Blue (Basic)



Charcoal (Basic)



Light Gray (Basic)

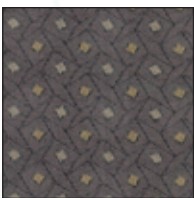
Grade 2 samples (family):



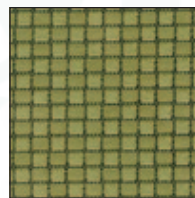
Eclipse (Moonscapes)



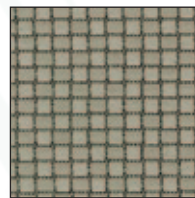
Lion (Safari)



Wynn (Casino)



Pawn (Chess)

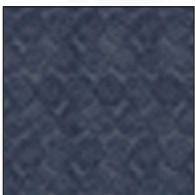


Knight (Chess)

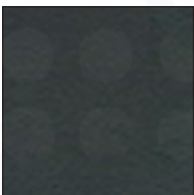
Grade 3 samples (family):



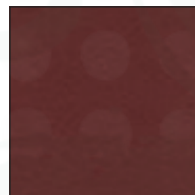
Lava (Sahara)



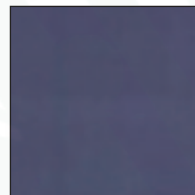
Nile (Sahara)



Piano (Symphony)



Cello (Symphony)



Aida (Stage)

Spectrum offers three grades of fabric for these chairs.

To view all of the fabrics available, check specifications and availability, go to www.spectrumfurniture.com.

Executive Office Seating

Nothing embraces the executive work-style more. Innovative ergonomics and design deliver exceptional comfort and customized fit.

Executive style!

Unmistakable in its distinctive good looks. The Executive Mesh Back Chair combines outstanding executive features with the most current design and ergonomic trends.

Standard Features:

- ▲ Mesh back
- ▲ EZ back height adjustment
- ▲ Infinitely locking seat tilt
- ▲ Infinitely locking back tilt
- ▲ Seat slider
- ▲ Tension knob

Incredible value!

This Executive Chair also offers an unprecedented combination of fine craftsmanship and comfort at a very reasonable price.

Great for the executive on the move, as an office guest chair, or a daily-use conference chair.

Standard Features:

- ▲ Pneumatic height adjustment
- ▲ Swivel/Rocking tilt
- ▲ Back depth adjustment
- ▲ Tilt lock at upright only
- ▲ Tension knob
- ▲ Pivot Backrest
- ▲ Low back
- ▲ Built-in lumbar support

Extraordinary comfort!

The Adjustable Executive Chair blends function and beauty with sophisticated, contoured design. These chairs offer outstanding value for the right price.

Standard Features:

- ▲ Pneumatic lift
- ▲ Swivel/Rocking tilt
- ▲ Tilt lock at upright only
- ▲ Tension knob
- ▲ Fixed loop arms

Fabric options:

3 standard grades available
See samples and basic information on previous page
More samples and detailed information on
www.spectrumfurniture.com



38244

Executive Adjustable Chair shown with optional adjustable "T" Arms 38239. (Also available is the memosoft arm set 38240)



38234

Executive Adjustable Chair shown with optional Black Loop Arms (38241)



38201

Adjustable Executive Chair



All of the fabric-covered seating on this page are Greenguard Indoor Air Quality Certified