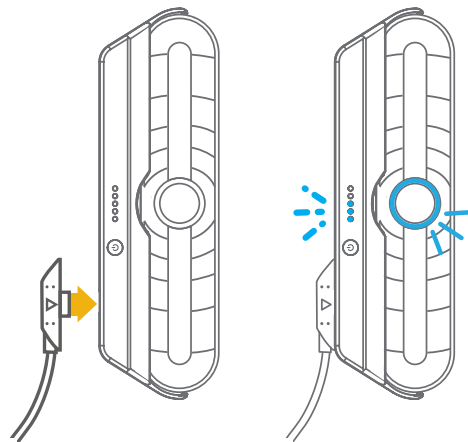


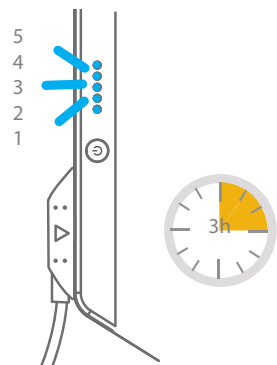
Charging Instructions (continued)



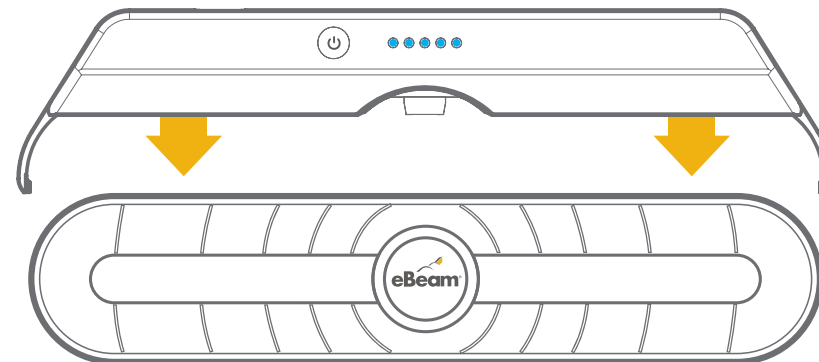
Quick Setup



- 2** Connect the USB cable to the eBeam Edge Battery Pack. The battery meter will blink to indicate that the battery is charging.



- 3** For a full charge, keep the Battery Pack plugged in for approximately 3 hours, until all 5 LEDs are on and have stopped blinking.



Connect

twitter.com/eBeam

search for eBeam

youtube.com/LuidiaTech

www.e-beam.com | 1.888.99.eBeam

Luidia Inc. is the creator of eBeam® interactive technology that helps the world capture and share content. The company's products are utilized by organizations of all sizes, with hundreds of thousands of users across multiple industries and geographies. For more information on Luidia, please visit www.e-beam.com or follow on Twitter and Facebook @eBeam.

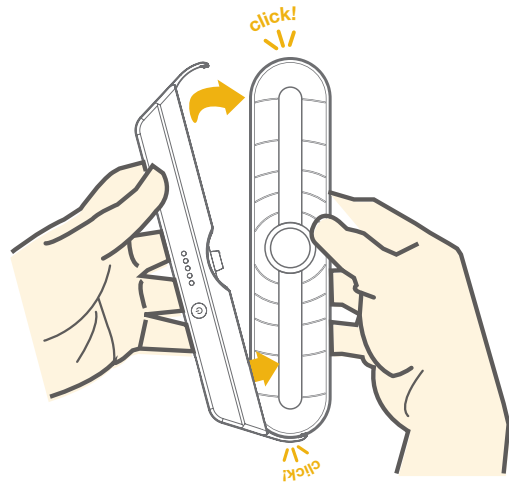
©2013 Luidia, Inc. All rights reserved. eBeam and the Luidia logo are registered trademarks of Luidia, Inc. Other product names and logos are the property of their respective owners.



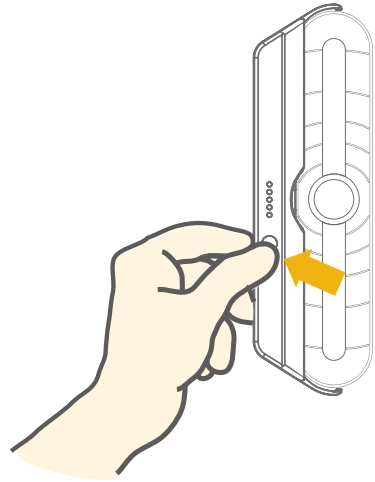
Touchboards

205 Westwood Ave, Long Branch, NJ 07740
Phone: 866-94 BOARDS (26273) / (732)-222-1511
Fax: (732)-222-7088 | E-mail: sales@touchboards.com

Setup Instructions

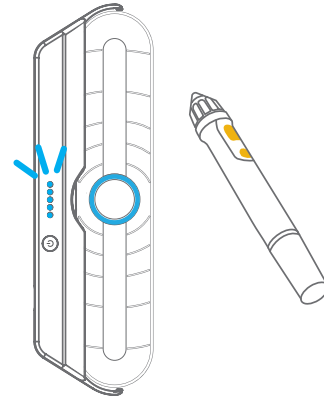


- 1 Slide the eBeam Edge into the Edge Battery Pack as shown until you feel the battery pack snap into place.



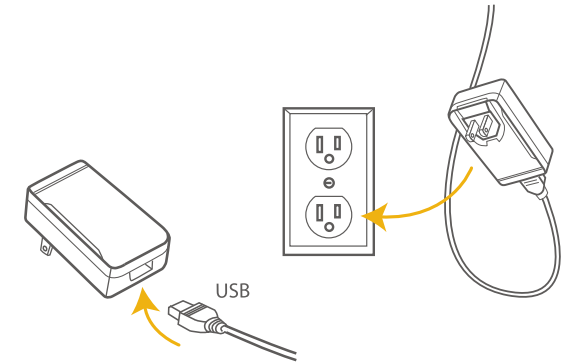
- 2 Press and hold the power button momentarily to turn on the battery pack.

If the battery meter is not illuminated or the battery level is low, you need to charge the battery pack (see charging instructions).



- 3 The eBeam Edge with Battery Pack is ready for use.

Charging Instructions



- 1 Locate the USB cable and USB power supply provided with your eBeam Edge Wireless. Plug the USB cable into the USB power supply and plug the power supply into a wall outlet.