



CORPORATE TECHNOLOGY

Products for all Corporate Environments

TOUCHITTM
TECHNOLOGIES 

Interactive LEDs mean Business

The TouchIT interactive LED allows the presenter to show any content on the screen to the room from their computer. With a high resolution and low glare image, even the smallest of text is easy to read on the LED.

Multi-touch allows the presenter to control and annotate over any application that is running on their PC or MAC directly from the screen. You can even use gestures to control your applications.

Engaging interactive presentations have never been so easy with the TouchIT interactive LED.

Goodbye to boring, static, one dimensional presentations.



Software



We offer both annotation tools as well as meeting collaboration software as standard with all our TouchIT LEDs.

See pages 4-7

Multi-touch = Multi-Users

With multi-touch, you can have multiple users working on the LED at the same time. Group activities, brainstorming, the LED is a true presentation tool to bring your meetings to life and engage your thought process.

Technology for Business

Simply connect your PC to our TouchIT interactive LED and deliver the perfect pitch with engaging annotations and interactivity.

32" to 84" sizes available

3 Year On Site Warranty

(USA, Canada & Australia)

What does 4K / UHD mean for the meeting room?

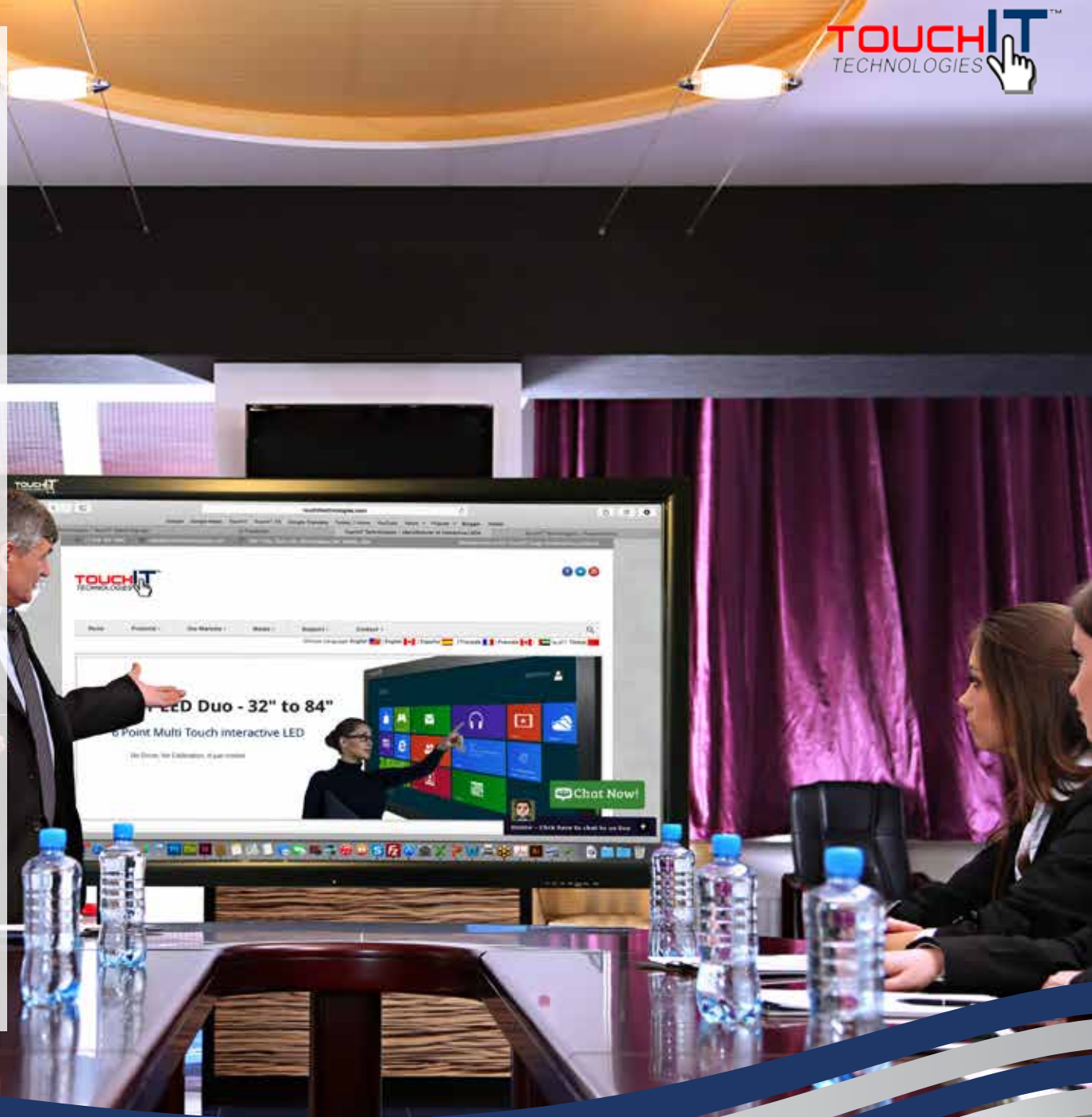
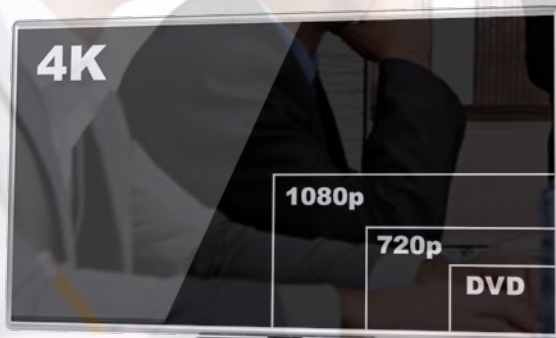
4K or Ultra High Definition (UHD) Interactive LEDs simply mean a higher resolution and more pixels on the screen. What does that mean for the boardroom or meeting room?

With a UHD interactive LED, a presenter is able to have more space on the screen to display and annotate content or presentations for colleagues.

The participants will also benefit from a sharper image meaning that smaller details are easier to read from the back of the room and there is less strain on the eyes.

More pixels means more space at the LED screen for multiple users to work independently on the LED or together in small groups making use of the multitouch LED.

TouchIT 4K LEDs come in 65", 75" and 84" sizes.



Collaboration Software

Use TouchIT Notes to connect Cell Phone and Tablet Devices to the LED.



Improve group collaboration in your meetings

- Give presenters freedom to move around the room and maintain control of the LED wirelessly
- Share Your LED Screen With 40+ Colleagues
- Remote meetings & presentations over the Internet
- Mirror your tablet or smartphone to the LED

TouchIT Notes is supplied with all TouchIT LEDs

TouchIT Notes - Connect Your Tablet and Cell Phone devices to the Interactive LED for group collaboration.

Increase productivity by adding notes to the presenter's slides on your own device. Continue to make notes on any slide, safe in the knowledge you can re-join the presenter in one click. After the meeting, there is no need to save the notes, or wait for them to be emailed, they are saved automatically, to your own device.





Connect ANY device



Collaborate



BYOD Productivity

TouchIT Notes allows you to connect to a meeting session with a tablet, cell phone, Windows PC or even a MAC. Cross-platform collaboration!

TouchIT Notes allows the presenter to select a group of users to work together live in real time annotating on their own devices.

As TouchIT Notes is a true cross-platform solution, users don't have to be all on the same devices. This leads to a more inclusive BYOD environment.



Instant Meeting Feedback

Quickly gauge levels of understanding and gather feedback by posing voting questions to students and have them respond on their iPad, Android or laptop.

Wireless presenting

Work at the front of the room or use your tablet device to control your PC wirelessly. Use the DisplayNote App on your device to open and annotate on any content and share that with your colleagues.

Screen Mirroring

Mirror any content from your PC or Mac to a colleague's device. There's no need to spend time rewriting existing presentations for all those different types of devices.

Annotation Software

TouchIT Oktopus is supplied with all TouchIT LEDs

- Use your existing presentations and resources
- Work with ANY existing programs or content
- Intuitive and easy to use
- Windows & MAC compatible



Annotate Over ANY Application

The TouchIT Annotation software allows you to annotate over any application and then save your annotations. If you can open a document or image on your computer, then you can annotate over it with the TouchIT Annotation Software.



Annotate Live Video

Use interactive tools to annotate over live video. This can be stored on your computer or streamed from the web.



Save your Annotations to PDF

All annotations that are made within the software can be saved in a variety of formats including the popular PDF document. You can then email them straight to your colleagues. It's quick and easy!



Red Line Documents

Red lining documents is quick and easy with the TouchIT annotation tools. Simply choose a pen from the floating tool bar and annotate over your existing document.

Corporate Benefits

Why should I use TouchIT software in the Meeting Room?

Make your notes on the LED and save them into PDFs

Record Audio & Video for enhanced presentations

Create and Save Content for Future Use

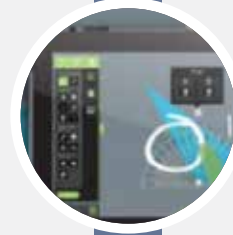
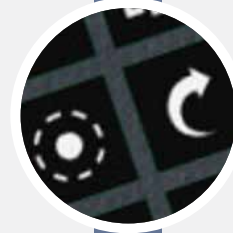
Available in 40 Languages

Customizable Tool Palette

Compatible with Mac and Windows

Multi-Touch & Multi-Pen for Increased Interaction

Works over browser content & proprietary applications



Annotate PowerPoint, Word and Excel

Quickly and easily annotate over any application, even PowerPoint. Save and embed your annotations into PowerPoint, Word & Excel.

Multi-Touch / Multi-Pen

Enhanced multi-pen and multi-touch capabilities allow your colleagues to simultaneously use and manipulate TouchIT tools using the TouchIT LED.

Customize Tool Palette

TouchIT has a fully customizable tool palette which will make the software easier to use and incredibly familiar for the presenter. Avoid a one-size-fits-all, off-the-shelf user experience.

Use Seamlessly with Your Desktop

TouchIT Tools are different than any other interactive whiteboard / projector software. Not only does it sit over your desktop, it also sits over any other application, such as office programs, video software, existing resources, websites, etc.

Media Bank

Image Gallery with 3100+ images including. If you need to import your own imagery into the software you can do so easily; just drag and drop.

TouchIT Meeting - Room scheduling system that connects to Microsoft Exchange, Google Calendar and even MS Excel!



Schedule From Any Device

Scheduling a meeting room is as simple as adding an event into the calendar for that particular room which is setup on your system. Our room scheduling software can integrate with Google Calendar, Microsoft Exchange, Outlook and even Excel.



MS Exchange, Google Calendar or Excel

Our system is flexible so it can be incorporated into MS Exchange, Google Calendar or even driven by a simple Excel sheet.



Customizable Designer Layouts

We include 7 different layouts that can be used with TouchIT Meeting. You can customise the font, colors and logo to match your company's style.



No Apps, No APIs, No Plugins, System Admin Friendly

We don't need Apps, Plugins or APIs - we can link directly to your calendar making integration simple but more importantly secure.





Room Scheduling
made easy!

TouchIT Meeting is ideal for any meeting room or shared space that that needs to be scheduled.

Digital Signage Software for Corporations

Install TouchIT Digital Signage on any PC and convert it into a Signage Player



Digital Signage in Business is helping change the ways in which organizations communicate – it allows Businesses of all sizes to reach their customers and staff with up to date, consistent and relevant messages, instantly.

TouchIT Digital Signage replaces static text and pictures with an eye-catching display that can incorporate moving images, video, TV and more....

DRAG AND DROP CREATION Creating the perfect welcome sign for your business is just a case of dragging and dropping content into place.

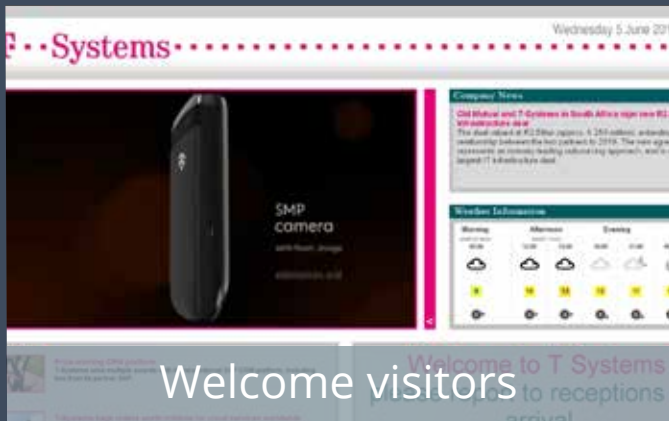
INCORPORATE ALMOST ANY FILE FORMAT If you have a product video to advertise what you offer you can easily incorporate this into your Digital Signage

REMOTE UPDATING Update the “deal of the week” quickly and easily via the built-in web server from any browser on the network

TOUCH SCREEN COMPATIBLE TouchIT Digital Signage is ideal for use with Touch Screens to create a wayfinder application.

UNLIMITED ZONES allow you to create signage with as much content as you need, anywhere on the screen

RESOLUTION INDEPENDENT - use any screens you have for your signage



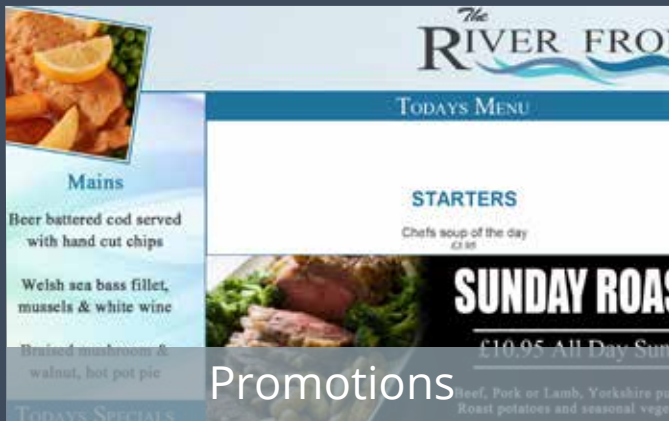
Welcome visitors



Wayfinder Maps



Advertise facilities



Promotions



Highlight health & safety



Staff Information

MANUAL height adjustable stand

Our Mobile Stand is specifically designed for the TouchIT LED range of interactive displays and provides a mobile mounting option. The stand is manually height adjustable with five fixed positions.



Suitable for use with all sizes of LED.
Part Code - MOBWMK

ELECTRIC height adjustable stand

The MotoWMKII is able to raise up to 150kgs (330lbs) 700mm (27.5") at the touch of a button and is suitable for use with the entire range of LED - 32" to 84".



Suitable for use with all sizes of LED.
Part Code - MOTOWMKII

WALL MOUNTS

Our wall mounts are specifically designed to attach the LED to a wall. Our wall mounts hold the units firmly in place. (Please be aware that other mounts may not be rated for the weight or specific use with our products.)

Part Code - WMK-32 | WMK-42-46-55 | WMK-65-84



TABLE TOP STANDS

Our table top stands are specifically designed for the LED range so they can be used on a table or desk. The TouchIT Table Top Stand is ideal for displaying the TouchIT LED on top of a cabinet or indeed a table or shelf where wall mounting is not an option.

Part Code - DTS-42-46-55 | DTS-84
DTS-65-70

Part Codes



Interactive LEDs

0608641030075	32" TouchIT LED (Full HD)
0608641029703	42" TouchIT LED (Full HD)
0608641029710	46" TouchIT LED (Full HD)
0608641029727	55" TouchIT LED (Full HD)
0608641029734	65" TouchIT LED (Full HD)
0608641029741	70" TouchIT LED (Full HD)
0608641030211	65" 4K TouchIT LED (4K UHD)
0608641030273	75" 4K TouchIT LED (4K UHD)
0608641030297	80" TouchIT LED (Full HD)
0608641030198	84" 4K TouchIT LED (4K UHD)

Interactive LEDs with Integrated PC

0608641029765	42" TouchIT LED (Full HD & PC)
0608641029772	46" TouchIT LED (Full HD & PC)
0608641029789	55" TouchIT LED (Full HD & PC)
0608641029796	65" TouchIT LED (Full HD & PC)
0608641029802	70" TouchIT LED (Full HD & PC)
0608641030259	65" 4K TouchIT LED (4K UHD & PC)
0608641030280	75" 4K TouchIT LED (4K UHD & PC)
0608641030303	80" TouchIT LED (Full HD & PC)
0608641030235	84" 4K TouchIT LED (4K UHD & PC)

TouchIT Fusion

0608641029901	42" 10pt Touch
0608641029918	42" 32pt Touch
0608641029895	55" 10pt Touch
0608641028454	55" 32pt Touch

Digital Signage Software

0608641029999	TouchIT Digital Signage
---------------	-------------------------

Stands & Mounts

0608641029178	32" Wall Mount
0608641029147	42" - 55" Wall Mount
0608641029154	65" - 84" Wall Mount
0608641029185	42" - 55" Desk Top Stand
0608641029192	65" - 70" Desk Top Stand
0608641029208	84" Desk Top Stand
0608641029376	Manual LED Stand
0608641029215	Electric LED Stand

TouchIT Software

0608641030013	Notes Presenter
0608641030020	Notes 10
0608641030037	Notes 20
0608641030044	Notes 40
0608641030051	Notes 40+
0608641028409	Oktopus
0608641028416	Oktopus Site License

If you are unsure about any of the part codes for the products or would like more information, please call us on +1 248 764 1084 or email sales@touchittechnologies.com

Model Name	TouchIT 32" LED	TouchIT 42" LED	TouchIT 46" LED	TouchIT 55" LED	TouchIT 65" LED	TouchIT 70" LED
Part Code	0608641030075	0608641029703	0608641029710	0608641029727	0608641029734	0608641029741
Panel Size (Dia.)	32 inch	42inch	46 inch	55 inch	65 inch	70 inch
Resolution	1920 x 1080					
Brightness	350 cd/m2	400 cd/m2	500 cd/m2	400 cd/m2	350 cd/m2	350 cd/m2
Contrast	3000:1	4000:1	4000:1	4000:1	4000:1	4000:1
Viewing Angle	178°/178°					
Response Time	8ms	6.5 ms	6.5 ms	6.5 ms	5.5 ms	4 ms
Backlight	LED					
Backlight Life	50,000 Hours	30,000 Hours	50,000 Hours	30,000 Hours	30,000 Hours	60,000 Hours
Operating Temp.	0-50°C					
Operating Humid.	10-90% RH					
Input Voltage	AC 100-240V, 50/60Hz					
Power Consump.	< 65 Watts	< 70 Watts	< 120 Watts	< 135 Watts	< 160 Watts	< 195 Watts
Standby Power	< 0.5 Watts	< 0.5 Watts	< 0.5 Watts	< 0.5 Watts	< 0.5 Watts	< 0.5 Watts
Input Connector	VGA x1, HDMI x3, USB for Media x2, USB for Touch x2, Audio in x1					
Output Connector	VGA x1, HDMI x1, Audio out x1					
Screen Control	RS-232 & Remote Handset					
Ambient Detection	Auto Ambient Light Detection					
Touch Technology	SLW 10-Point Touch					
AG Tempered Glass	4mm				5mm	
Speakers	10W x2					
VESA	200 x 200	440 x 300	400 x 440	440 x 400	440 x 400	440 x 500
Unit Dimension (WxHxD) mm	798.54 x 498.35 x 138.3	1028.74 x 631.21 x 109.3	1114.64 x 678.55 x 113.6	1305.94 x 786.95 x 110.3	1524.24 x 909.55 x 114.8	1633.74 x 976.75 x 115.8
Unit Dimension Inches	31.38" x 19.58" x 5.45"	40.42" x 24.80" x 4.29"	43.80" x 26.66" x 4.46"	51.32" x 30.92" x 4.33"	59.90" x 35.74" x 4.51"	64.20" x 38.38" x 4.55"
Net Weight KG	23.2 KG	28 KG	30.4 KG	47.2 KG	58.65 KG	86.10 KG
Net Weight LBS	51.15 LBS	61.73 LBS	67.02 LBS	104.06 LBS	129.30 LBS	189.82 LBS
Optional PC	N/A	Intel i5 + 8G RAM + 500G HDD				
Pro (with PC) Part Code	N/A	0608641029765	0608641029772	0608641029789	0608641029796	0608641029802
Packaged Dimensions (mm)	934 x 322 x 710	1152 x 238 x 783	1243 x 238 x 841	1426 x 238 x 948	1629 x 252 x 1036	1745 x 238 x 1120
(inches)	36.77" x 12.67" x 27.95"	45.35" x 9.37" x 30.82"	48.94" x 9.37" x 33.11"	56.14" x 9.37" x 37.32"	64.13" x 9.92" x 40.78"	68.70" x 9.37" x 44.09"
Packaged Weight (KG)	26.2kg	39kg	43.25kg	50.15kg	76 kg	94.6 kg
(lbs)	57.64lbs	85.8lbs	95.15 lbs	110.33 lbs	167.2 lbs	208.12 lbs

TouchIT 80" LED	TouchIT 4K 65" LED	TouchIT 4k 75" LED	TouchIT 4K 84" LED	42" Fusion 10 or 32 Point	55" Fusion 10 or 32 Point
0608641030297	0608641030211	0608641030273	0608641030198	See page 13	See page 13
80 inch	65 inch	75 inch	84 inch	42 inch	55 inch
		3840 x 2160		1920 x 1080	
350 cd/m2	350 cd/m2	450 cd/m2	350 cd/m2	400 cd/m2	450 cd/m2
5000:1	4000:1	4000:1	1600:1	4000:1	4000:1
		178°/178°		178°/178°	
4 ms	6.5 ms	8 ms	5 ms	6.5 ms	6.5 ms
	LED			LED	
50,000 Hours	30,000 Hours	50,000 Hours	50,000 Hours	30,000 Hours	60,000 Hours
	0-50°C			0-50°C	
	10-90% RH			10-90% RH	
	AC 100-240V, 50/60Hz			AC 100-240V, 50/60Hz	
< 280 Watts	< 220 Watts	< 370 Watts	< 430 Watts	< 70 Watts	< 135 Watts
< 0.8 Watts	< 0.5 Watts	< 0.5 Watts	< 0.75 Watts	< 0.5 Watts	< 0.5 Watts
	VGA x1, DVI x1, HDMI (UHD) x1, HDMI (FHD) x2, Display Port x1, Audio in x1, USB for Media x1, USB for Touch x1			VGA x1, DVI x1, HDMI x2, Audio in x1, mini-Din x1, USB for Media x2, USB for Touch x1	
	N/A			VGA x1, Audio out x1	
	RS-232 & Remote Handset			RS-485 & Remote Handset	
	Auto Ambient Light Detection			Auto Ambient Light Detection	
	SLW 10-Point Touch			SLW 32-Point Touch	
	5mm			4mm	
	10W x2			10W x2	
440 x 500	400 x 400	400 x 400	400 x 400	440 x 300	440 x 400
1866.44 x 1098.75 x 134.7	1524.24 x 909.55 x 121	1742 x 1032 x 134.7	1960.54 x 1156.75 x 118.1	1012 x 631 x 103.5 (Monitor)	1300 x 772 x 104.2 (Monitor)
74.38" x 43.26" x 5.3"	59.90" x 35.74" x 4.75"	68.46" x 40.55" x 5.28"	76.46" x 45.46" x 4.64"	39.77" x 20.82" x 4.06"	51.09" x 30.33" x 4.09"
92.6 KG	58.65 KG	TBD	103.56 KG	34 KG (Monitor)	42.2 KG (Monitor)
204.15 LBS	129.30 LBS	TBD	228.31 LBS	74.96 LBS (Monitor) 158.4lbs (Trolley)	93.04 LBS (Monitor) 158.4lbs (Trolley)
	Intel i5 + 8G RAM + 500G HDD			Intel i5 + 8G RAM + 500G HDD	
0608641030303	0608641030259	0608641030280	0608641030235	Included	Included
TBD	1629 x 252 x 1036	TBD	2120 x 310 x 1430	1160 x 250 x 900 (Monitor) 1130 x 820 x 920 (Trolley)	1440 x 250 x 1070 (Monitor) 1130 x 820 x 920 (Trolley)
TBD	64.13" x 9.92" x 40.78"	TBD	83.46" x 12.20" x 56.30"	45.66"x9.84"x35.5" (Monitor) 44.48"x32.28"x36.22"(Trolley)	56.69"x9.84"x42.04" (Monitor) 44.48"x32.28"x36.22"(Trolley)
TBD	76 kg	TBD	116.2 kg	36kg (Monitor) 83kg (Trolley)	47kg (Monitor) 83kg (Trolley)
TBD	167.2 lbs	TBD	255.64 lbs	78.98lbs (Monitor) 182.6 LBS (Trolley)	121lbs (Monitor) 182.6 LBS (Trolley)



TouchIT Technologies
2051 Villa, Suite 104
Birmingham, MI 48009
USA
sales@touchittechnologies.com

USA - 248 764 1084
UK - 0208 819 9641
AUSTRALIA - 0290 370 130
ASIA PAC Sales +886 955 771 765
HONG KONG Sales +85 258 083 087

Distributed by