

CHROMEBOOK™ CART

NEW vLT32™ Chromebook Cart

Touchboards

205 Westwood Ave, Long Branch, NJ 07740
Phone: 866-94 BOARDS (26273) / (732)-222-1511
Fax: (732)-222-7088 | E-mail: sales@touchboards.com

Super-sized Chromebooks

The vLT32 Chromebook Cart is the smallest footprint 32 unit cart on the market designed specifically to manage the biggest Chromebook laptop computer.

Go big!

Protect your large Chromebook by choosing the right cart

Big on Value

Store

Secure

Transport

Charge

Economic

- Manages up to 32 full-size chromebook computers and their power adapters in a small footprint cart
- Overhead charging plugs lend themselves to quick connections, saving you time
- Padded shelves and coated dividers protect your investment

Intelligent design

- Each bay has dedicated power outlets
- "Chimney effect" ventilation allows heat to dissipate and exit cart
- Superior overhead cord management places plugs directly above devices
- Ample clearance is provided for easy removal/insertion of laptops

Safety first

- A handle and easy-rolling 5" balloon wheels provide safe, controlled mobility
- Cord management system removes cord clutter and separates students from line voltage
- Electrical system consists of UL Listed components
- Cycle timer prevents power overload while charging

Robust design

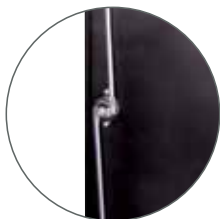
- Ventilation provides "chimney effect" airflow keeping equipment cool
- All doors have double-bolt locks to secure equipment and electrical connections
- Steel door resists unwanted entry with steel on steel construction



Product ships
mostly assembled



DOUBLE-BOLT
KEYED SECURITY
LOCK



TWO POINT
DOUBLE-BOLT LOCK



PADDED SHELVES



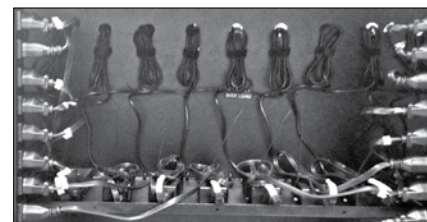
5" BALLOON
WHEELS



55464 CHBBW



READY TO TAKE ON YOUR WIRING NEEDS, THE SPACIOUS CHARGING COMPARTMENT CAN NEATLY INTEGRATE UP TO 16 CHROMEBOOK ADAPTERS WITH PLENTY OF SPACE FOR COOLING.



Mobile Computing Solutions

DESIGN SPECS

CART DIMENSIONS

vLT32 - Overall: (Height is to worksurface)
30¹/₈"W x 30"D x 41³/₄"H (Width is with handle)

BAYS: 2³/₄"W x 16³/₁₆"D x 14³/₄"H (Note: 2 devices per bay)

COLORS Standard color combinations



Wild Cherry
& Black (CHB)



Indigo Organix
& Black (IB)

AVAILABLE MODELS

| | |
|-------|---|
| 55463 | vLT32 w/ Cycle Timer (preinstalled) - Recommended if each power adapter requires more than 45 watts. Holds up to 32 Chromebooks, 2 per bay |
| 55464 | vLT32 w/o Cycle Timer - Recommended if each power adapter requires less than 45 watts. Holds up to 32 Chromebooks, 2 per bay |

POPULAR OPTION

| | |
|-------|--|
| 95004 | Velcro® Strap Kit - Each kit contains (16) 12" straps and (32) 5" straps |
| 99035 | Cycle timer - This timer will allow the cycling of power to two banks of devices to control length and frequency of charge |