



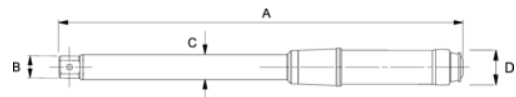
600T-IW 100-600 FtLb Single Setting Torque Wrenches





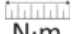



PRODUCT DETAILS

- Factory Pre-Set models are set at the factory to the customer's specified torque setting, and are furnished with a Certificate of Calibration
- Please specify desired torque setting when order is placed
- Featuring a durable, non-slip cushion grip
- Uses universal round shank interchangeable heads
- Audible click and feel impulse torque control mechanism
- Tamper proof torque setting for production line use
- Accuracy: $\pm 3\%$ CW of indicated value, in direction of torque indicator, from 20% to 100% of full scale
- Designed for use on production lines and other applications where a specific torque is required for repetitive operations
- Tamper proof torque setting for production line use Meets or exceeds ASME B107.300-2010

▲ WARNING ▲



PRODUCT ATTRIBUTES

Product	 lbf·ft		 N·m		A	B	C	D	 lb	
600T-IW	120-600 lbf·ft		162-814 N·m	0.990 in	55 in	1.5 in	1.25 in	1.25 in	10.45 lb	Z