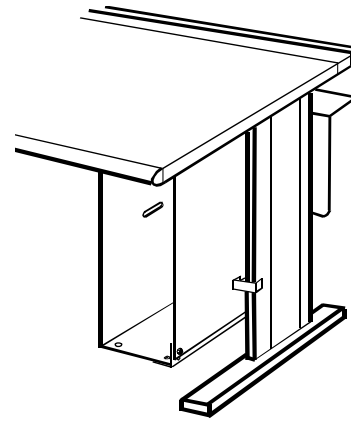
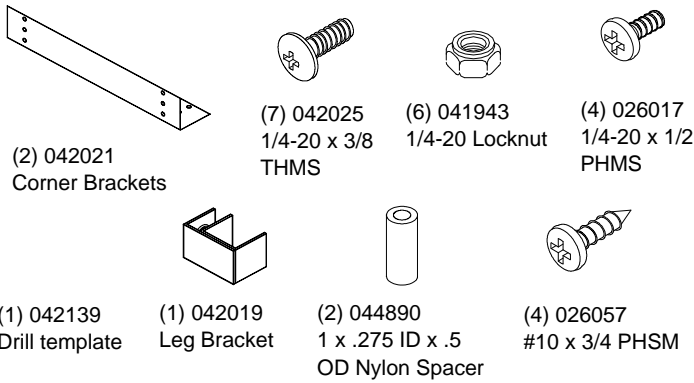
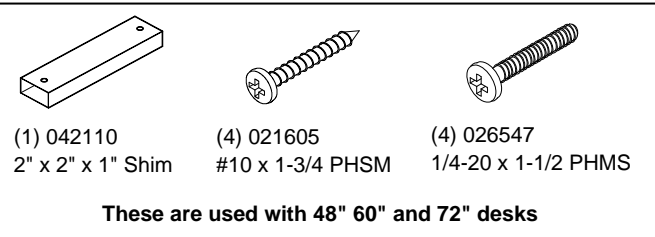


Assembly Instructions:



Adjustable CPU Sling #95500



Tools Required:
 Phillips head screwdriver
 7/16" wrench
 Drill with an 1/8" bit (for desks without threaded inserts)

Before you begin, please make sure all parts and proper quantities are included. Any parts damaged during shipment must be reported within 15 days of receipt. To report information regarding damages or if you have any questions, please call 1-800-235-1262.

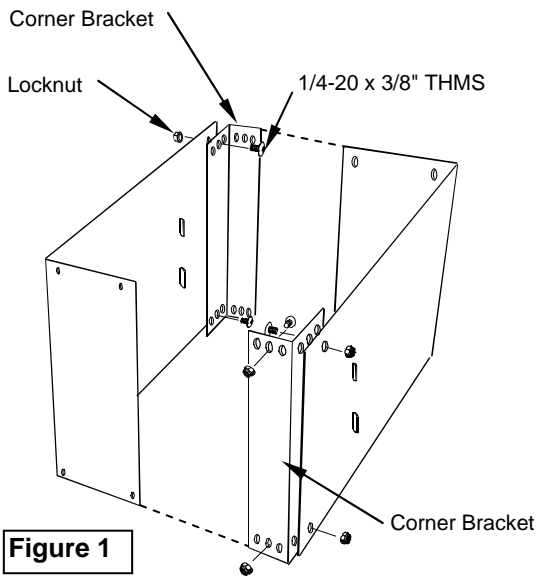


Figure 1

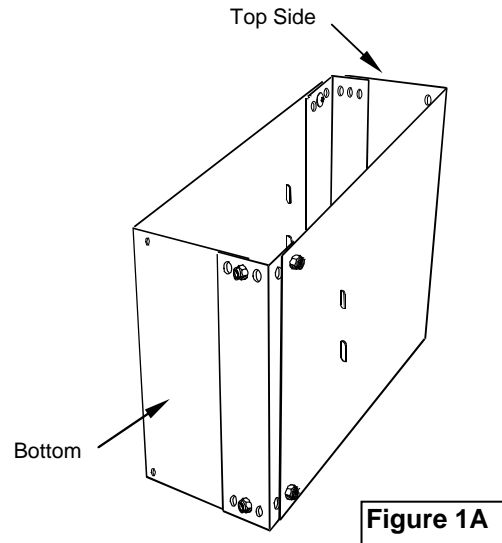


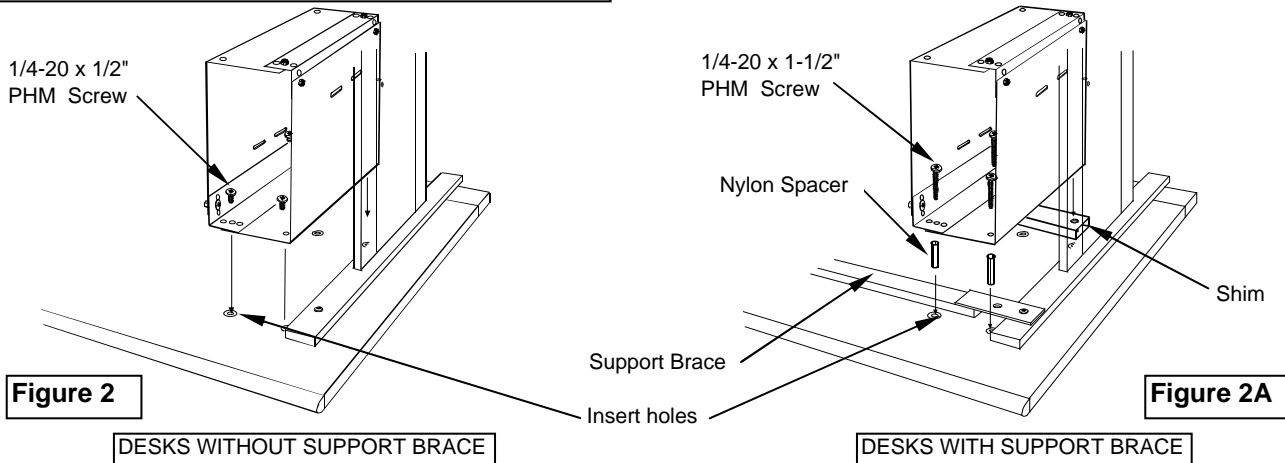
Figure 1A

1. ASSEMBLING & ADJUSTING CPU SLING

- A. Determine the height and width required for your CPU.
- B. Adjust the CPU Sling to the height and width of your CPU using the three adjustment holes and attach the corner brackets to the CPU sling using the 1/4-20 x 3/8" Truss Head Machine screws and 1/4-20 Locknuts as shown in **Figure 1**. The screws install from the inside with the locknuts on the outside. Note the positions of the corner brackets for the top and bottom sides of the CPU sling (**Figure 1A**.)

2. ATTACHING SLING TO DESKS WITH THREADED INSERTS

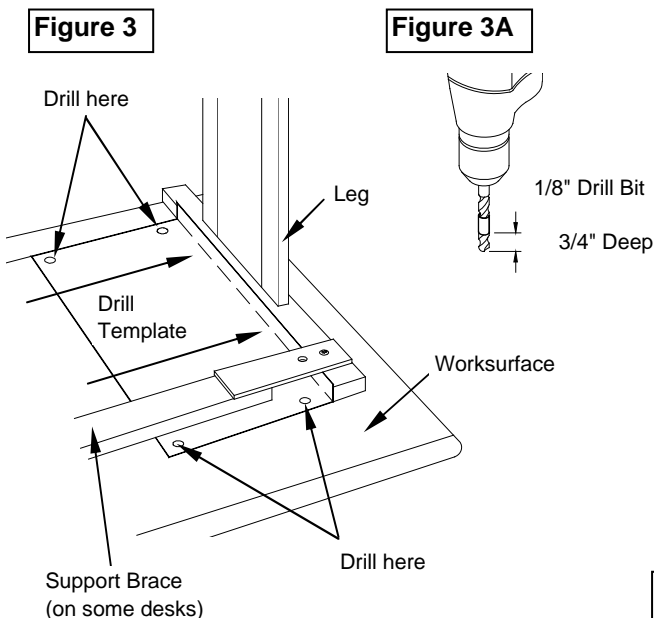
Note: If desk does not have threaded inserts, skip to step #3



- Determine whether the CPU Sling will mount on the right or left side of the desk and align the top sling holes with the appropriate set of inserts. **Figure 2** shows a sling being mounted on the left side of a desk.
- Attach the Sling to the worksurface using (4) 1/4-20 PHM Screws and tighten.
Note: Desks without support brace use two 1/4-20 x 1/2" PHM Screws (026017.) For desks with Support Brace as in **Figure 2A**, use (2) Nylon Spacer (044890) in the front hole, and the Back Support Shim (042110) in the rear holes with the longer 1/4-20 x 1-1/2" PHM Screws (026547.) The front of the sling will extend past the Support Brace.

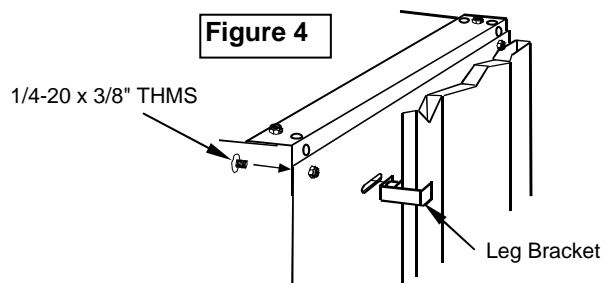
3. ATTACHING SLING TO DESKS WITHOUT THREADED INSERTS

- Determine whether the CPU Sling will mount on the right or left side of the desk.
 - Fold and tape the enclosed Drill Template (042139) to the underside of the worksurface in the position shown in **Figure 3**. Wrap a piece of tape around a 1/8" drill bit to mark 3/4" from the end of the bit - **Figure 3A**. Carefully drill through the Template on the four marked holes, 3/4" deep (**see Figure 3**.)
 - Attach CPU sling to worksurface using (4) #10 Sheet Metal Screws.
- Note:** Desks without threaded inserts or Support Brace use (4) #10 x 3/4" PHSM Screws (026057.) Desks without inserts that include a Support Brace as in **Figure 3**, use (2) Nylon Spacers (044890) in the front holes, and one Back Support Shim (042110) in the back holes using the longer #10 x 1-3/4" PHSM Screws (021605.) The front of the CPU Sling will extend past the Support Brace.



4. ATTACHING LEG BRACKET

- Line up the Bracket with the front slot of the CPU Sling as shown and attach with 1/4-20 x 3/8" THM Screw (042025) (**Figure 4**)
- Adjust the Leg Bracket until it is snug against the Leg and tighten screw.



Note: If the CPU Sling is being used on a CLASS™ or Evolution™ desk, the included (042019) Leg Bracket should be attached to the Sling and Front Leg.