

VADDIO™ HUDDLESTATION™

Group Collaboration Appliance for Small or “Huddle” Type Conference Rooms

Part Numbers:

999-8910-000: HuddleSTATION Base System (North America)

999-8910-001: HuddleSTATION Base System (International)

999-8914-000: HuddleSTATION Deluxe System with Premium Wall Mount (North America)

999-8914-001: HuddleSTATION Deluxe System with Premium Wall Mount (International)

999-8915-000: HuddleSTATION Premier System, Premium Wall Mount, and PC to Dock Interface Cable (NA)

999-8915-001: HuddleSTATION Premier System, Premium Wall Mount, and PC to Dock Interface Cable (Int'l)

HuddleSTATION Camera/Sound Bar



MicDock, Controller/Dialer and PC Interface

**Accessories**

999-8901-000: GroupSTATION/HuddleSTATION Premium Wall Mount Kit

999-8902-000: MicDock 4x4 Mic Dock Interface Cable



Touchboards

205 Westwood Ave, Long Branch, NJ 07740
Phone: 866-94 BOARDS (26273) / (732)-222-1511
Fax: (732)-222-7088 | E-mail: sales@touchboards.com

Inside Front Cover - Blank

Table of Contents

| | |
|--|----|
| Overview | 5 |
| Intended Use:..... | 5 |
| Important Safeguards: | 5 |
| Unpacking..... | 6 |
| HuddleSTATION Base System 999-8910-000 (North America)..... | 6 |
| HuddleSTATION Base System 999-8910-001 (International)..... | 6 |
| HuddleSTATION/GroupSTATION Options/Accessories..... | 6 |
| Huddle/GroupSTATION Wall Mounting Kit (Worldwide)..... | 6 |
| HuddleSTATION or GroupSTATION PC to MicDock Interface Cable..... | 7 |
| HuddleSTATION System Packages..... | 7 |
| Installation Requirements..... | 8 |
| Anatomy of the HuddleSTATION MicDock | 9 |
| Image: MicDock User Interface with Call-outs | 9 |
| Image: MicDock Side View..... | 10 |
| Image: MicDock Connector Panel Bottom View with Call-outs..... | 10 |
| Anatomy of the HuddleSTATION Camera/Sound Bar | 11 |
| Image: HuddleSTATION Camera/Sound Bar | 11 |
| Image: End View of HuddleSTATION Camera/Sound Bar with Left End-cap Removed..... | 11 |
| Setting the WideSHOT Lens on the HuddleSTATION..... | 12 |
| Image: Focus Knob Removal..... | 12 |
| Image: Adjusting the HD Varifocal Optical Zoom Lens..... | 12 |
| First Time Set-up with the HuddleSTATION | 13 |
| Diagram: Basic HuddleSTATION System Connectivity | 13 |
| Installation Instructions: | 14 |
| Step 1: Position the HuddleSTATION Camera/Sound Bar..... | 14 |
| Image: Mounting the Camera/Sound Bar using the Vaddio Premium Wall Mount..... | 14 |
| Step 2: Route Cables in Cable Tray | 15 |
| Image: Side View of Wall Mount and Cable Tray..... | 15 |
| Diagram: Rear of the Camera/Sound Bar showing the location of the Z-Clips..... | 16 |
| Diagrams: Mounting the Z-Clips on the Z-Channel..... | 16 |
| Image: Connections to the Camera/Sound Bar | 17 |
| Image: Finished End-cap View of the Camera/Sound Bar | 17 |
| Step 4: Connecting the MicPOD Dock..... | 18 |
| Image: The MicPOD Dock’s Connections..... | 18 |
| Step 5: Docking the PC to MicPOD Dock..... | 18 |
| Option: Using the PC to MicDock Accessory Cable: | 19 |
| Image: PC to MicDock Cable Accessory | 19 |
| Step 6: Initial System Power Up | 19 |
| Image: Press and Hold Multifunction Buttons (PHMB) | 19 |
| Framing the HuddleSTATION’s Video Shot | 20 |

- Drawing: A Small Conference Room (10' wide x 12' long) 20
- Drawing: A Bigger, Small Conference Room (12' wide x 16' long)..... 20
- System Configuration and Programming..... 21
 - Network Requirements and Information 21
 - Accessing the HuddleSTATION Web Pages..... 21
 - HuddleSTATION Web Page Tour..... 21
 - Screen Shot: Login..... 21
 - Screen Shot: Configuration Page..... 22
 - Screen Shot: VoIP Network Settings 23
 - Screen Shot: VoIP SIP Settings 23
 - Screen Shot: VoIP RTP Settings..... 24
 - Screen Shot: Room Labels 25
 - Screen Shot: DHCP Network 25
 - Screen Shot: Static IP Network..... 26
 - Screen Shot: Security..... 26
 - Screen Shot: Diagnostics Menu 27
 - Screen Shot: System Menu..... 27
 - Screen Shot: System Confirmation 28
 - Screen Shot: System Firmware Update in Progress..... 28
 - Screen Shot: Help Menu 29
- Updating the HuddleSTATION 30
 - Updating Instructions:..... 30
- HuddleSTATION User Operations 32
- Making a VoIP Call 33
- Accepting a VoIP Call 33
- Connecting to a PC's Audio..... 34
 - Image: Screen Shot Vaddio STATION Selected for Playback..... 34
 - Image: Screen Shot Vaddio HDMI Monitor Selected for Playback..... 34
 - Image: Screen Shot Vaddio STATION Selected for recording 35
- Compatibility 36
 - USB 2.0 MJPEG Resolutions 36
 - Table: Supported Resolutions 36
- Warranty Information 37
- HuddleSTATION Compliance and CE Declaration of Conformity..... 38
- General Specifications..... 39
- Appendix A: Network Information Required 40

Overview

The Vaddio™ HuddleSTATION was designed with the small working conference room in mind. It's a complete Unified Communications (UC) solution incorporating all the audio & video functions for the small group collaboration in a small meeting room. This system can be used for local presentations, PC-based UC applications (i.e. Lync®, Jabber®, Skype®, Vidyo WebEx® etc...), VoIP audio conferencing, voice add-on and more.

The HuddleStation is made up of a table-based MicDock and a wall mounted HuddleSTATION Sound Bar with WideSHOT™ Type camera.



Images: HuddleSTATION Components; Camera/Sound bar MicDock controller, dialer and PC Interface for the system and the 25' (7.62m) Cat-6 SSTP Cable

The MicDock contains the mics, the user interface, and the docking connectors for the PC and UC application. Four (4) cardioid mic elements each with independent wideband AECs (acoustic echo cancellers), provides a 360° pickup pattern. Vaddio's SmartMic technology ensures that pristine, crystal clear audio is maintained for both local and far-end participants with hands-free operation. A capacitive-touch user interface on the MicPOD Dock provides for dialing and conference control. PC, laptop or tablet connections include HDMI or VGA (RGBHV) to locally extend the PC's display to the room monitor.

The HuddleSTATION sound bar incorporates a pair of bi-amped, 2-way loudspeakers, four (4) 25-Watt amplifiers and an integrated native HD camera. Like the WideSHOT™ camera, the HuddleSTATION camera has a super wide-angle lens providing greater than 82° horizontal field of view (16:9) for even the smallest of rooms. It has a manual pan/tilt mechanism and a 3X varifocal zoom lens that further tailors the image for the small room. The HuddleSTATION also includes an HDMI output for the room LCD monitor extending the PC's monitor when docked. A supplied single Cat-6 SSTP shielded cable (25-feet) connects the HuddleSTATION with the MicPOD Dock carrying power, video, audio, control and network. A premium wall mounting system with integrated cable tray and 4-in-1 Dock/PC Interface Cable (with HDMI/RGBHV/USB2.0/Network) are available as accessories.

Intended Use:

Before operating the device, please read the entire manual thoroughly. The system was designed, built and tested for use indoors, and with the provided power supply and cabling. The use of a power supply other than the one provided or outdoor operation has not been tested and could damage the device and/or create a potentially unsafe operating condition.

Important Safeguards:

Read and understand all instructions before using. Do not operate any device if it has been dropped or damaged. In this case, a Vaddio technician must examine the product before operating. To reduce the risk of electric shock, do not immerse in water or other liquids and avoid extremely humid conditions. Do not connect Power over Ethernet (PoE) cables directly to the RJ-45 ports on the device as damage may result.



Use only the power supply provided with the system. Use of an unauthorized or modified power supply will void any and all warranties.

The BaseSTATION Cable: The Vaddio LINK cable between the MicDock and the Camera Module is critical for proper operation. The supplied 25' (7.62m) LINK cable is Cat-6 SSTP (26awg stranded, individually shielded pairs with overall shield, gold contacts and metal shielded RJ-45). These exact attributes of the cable are required for the high speed data traffic between the two devices. A 50' (15.24m) Cat-6 SSTP, which is the maximum distance between the MicDock and the Camera Module, is available as an accessory. Do not use custom/homemade cables, because just they won't work.

Installation Requirements

Please use qualified personnel for installation of the HuddleSTATION systems. It is critical that the IT professionals that install and maintain the network at the place of installation be involved with the provision of the network for the HuddleSTATION IP, VoIP and PC connectivity.

Save These Instructions

The information contained in this manual will help you install and operate your product. If these instructions are misplaced, Vaddio keeps copies of Specifications, Installation and User Guides and most pertinent product drawings for the Vaddio product line on the Vaddio website. These documents can be downloaded from www.vaddio.com free of charge.

Unpacking

Carefully remove the device and all of the parts from the packaging. Unpack and identify the following parts:

HuddleSTATION Base System 999-8910-000 (North America)

- One (1) HuddleSTATION Camera/Sound Bar
- One (1) HuddleSTATION MicDock (Controller and Dialer)
- One (1) HuddleSTATION 25' (7.62m) Cat-6 SSTP Shielded LINK Cable
- One (1) 24 VDC 3.0 Amp Power Supply with North American Power Cable
- One (1) Installation and User Guide



HuddleSTATION Base System 999-8910-001 (International)

- One (1) HuddleSTATION Camera/Sound Bar
- One (1) HuddleSTATION MicDock (Controller and Dialer)
- One (1) HuddleSTATION 25' (7.62m) Cat-6 SSTP Shielded LINK Cable
- One (1) 24 VDC 3.0 Amp Power Supply
- One (1) Euro Power Cable
- One (1) UK Power Cable
- One (1) Installation and User Guide



HuddleSTATION/GroupSTATION Options/Accessories

Huddle/GroupSTATION Wall Mounting Kit (Worldwide)

- One (1) Premium Wall Mount with integrated cable tray
- One (1) Pair Z-clips for the back of the Camera/Sound Bar
- Four (4) 8-32 x 5/16" Phillips pan head screws for Z-clip
- Six (6) Spiral Drywall Anchors
- Six (6) #8 x 1.25" Screws for Wall Anchors
- One (1) Installation Guide

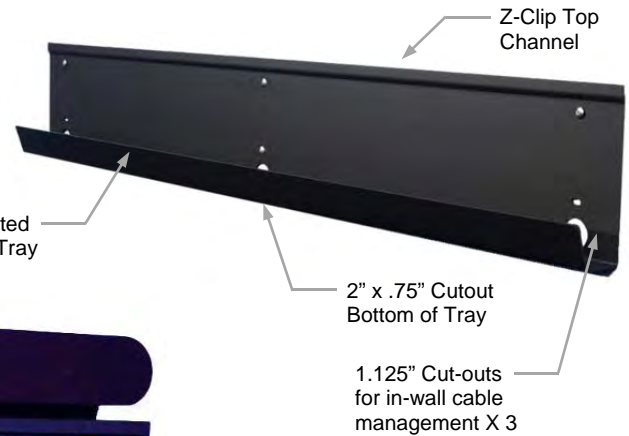
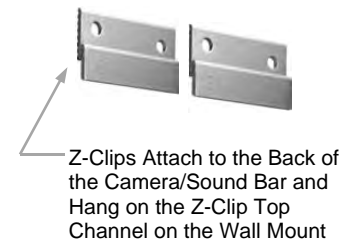


Image: Camera/Sound Bar Mounted above a 46"LED Monitor.

All cables are hidden in the integrated cable tray.



HuddleSTATION or GroupSTATION PC to MicDock Interface Cable

Premium 3' (.91m) 4x4 Interface Cable, extends the USB 2.0, HDMI, RGBHV and Network connections out from the Dock to the PC used with UC software application.

PC to Dock Interface cable includes DE-15 (RGBHV) male to male, USB 2.0 Type A to Type B Micro, HDMI-M to HDMI-M and Ethernet 10/100 Network RJ-45 to RJ-45.



HuddleSTATION System Packages

HuddleSTATION Deluxe System with Premium Wall Mount Included

Part Number: 999-8914-000 (North America)

- One (1) HuddleSTATION Camera/Sound Bar
- One (1) HuddleSTATION MicDock (Controller and Dialer)
- One (1) HuddleSTATION 25' (7.62m) Cat-6 SSTP Shielded LINK Cable
- One (1) 24 VDC 3.0 Amp Power Supply with North American Power Cable
- One (1) Installation and User Guide
- One (1) Premium Wall Mount with Integrated Cable Tray
 - One (1) Pair Z-clips for the back of the Camera/Sound Bar
 - Four (4) 8-32 x 5/16" Phillips pan head screws for Z-clip
 - Six (6) Spiral Drywall Anchors
 - Six (6) #8 x 1.25" Screws for Wall Anchors
 - One (1) 342-0673 Installation Guide



HuddleSTATION Deluxe System with Premium Wall Mount Included

Part Number: 999-8914-001 (International)

- One (1) HuddleSTATION Camera/Sound Bar
- One (1) HuddleSTATION MicDock (Controller and Dialer)
- One (1) HuddleSTATION 25' (7.62m) Cat-6 SSTP Shielded LINK Cable
- One (1) 24 VDC 3.0 Amp Power Supply
- One (1) Euro Power Cable
- One (1) UK Power Cable
- One (1) Installation and User Guide
- One (1) Premium Wall Mount with Integrated Cable Tray
 - One (1) Pair Z-clips for the back of the Camera/Sound Bar
 - Four (4) 8-32 x 5/16" Phillips pan head screws for Z-clip
 - Six (6) Spiral Drywall Anchors
 - Six (6) #8 x 1.25" Screws for Wall Anchors
 - One (1) 342-0673 Installation Guide



HuddleSTATION Premier System with Premium Wall Mount and PC to Dock Interface Cable Included

Part Number: 999-8915-000 (North America)

- One (1) HuddleSTATION Camera/Sound Bar
- One (1) HuddleSTATION MicDock (Controller and Dialer)
- One (1) HuddleSTATION 25' (7.62m) Cat-6 SSTP Shielded LINK Cable
- One (1) 24 VDC 3.0 Amp Power Supply with North American Power Cable
- One (1) Installation and User Guide
- One (1) Premium Wall Mount with Integrated Cable Tray
 - One (1) Pair Z-clips for the back of the Camera/Sound Bar
 - Four (4) 8-32 x 5/16" Phillips pan head screws for Z-clip
 - Six (6) Spiral Drywall Anchors
 - Six (6) #8 x 1.25" Screws for Wall Anchors
 - One (1) 342-0673 Installation Guide
- One (1) Premium PC to MicDock Interface Cable



HuddleSTATION Premier System with Premium Wall Mount and PC to Dock Interface Cable Included

Part Number: 999-8915-001 (International)

- One (1) HuddleSTATION Camera/Sound Bar
- One (1) HuddleSTATION MicDock (Controller and Dialer)
- One (1) HuddleSTATION 25' (7.62m) Cat-6 SSTP Shielded LINK Cable
- One (1) 24 VDC 3.0 Amp Power Supply
- One (1) Euro Power Cable
- One (1) UK Power Cable
- One (1) Installation and User Guide
- One (1) Premium Wall Mount with Integrated Cable Tray
 - One (1) Pair Z-clips for the back of the Camera/Sound Bar
 - Four (4) 8-32 x 5/16" Phillips pan head screws for Z-clip
 - Six (6) Spiral Drywall Anchors
 - Six (6) #8 x 1.25" Screws for Wall Anchors
 - One (1) 342-0673 Installation Guide
- One (1) Premium PC to MicDock Interface Cable



Another important note about the Cat-6 SSTP LINK Cable:

A 25' (7.62 m) Cat-6 SSTP cable is supplied with the system and a 50' (15.24 m) Cat-6 SSTP cable is available as an accessory (see below). Due to the high speed communication between the MicDock and Camera Module, please use only these two cabling options.

The Longer Link Cable Option:

999-8903-000: 50' (15.24m) Cat-6 SSTP Cable (26awg stranded, individually shielded pairs with overall shield, gold contacts and metal shielded RJ-45 connector).



Note: The system must be set with the internal web pages to use either the 25' (7.62m) or the 50' (15.24m) option. Please see the exciting and even stimulating Screen Shot Tour included in this manual.

Installation Requirements

Please use qualified personnel for installation of the HuddleSTATION system. **It is critical, even imperative, that the IT professionals that install and maintain the network at the place of HuddleSTATION installation be involved with the provision of the network for the HuddleSTATION IP, VoIP and PC connectivity.** When calling for technical support, please have the IT personnel involved with the installation available to put on the call. Thank you for your support.



Anatomy of the HuddleSTATION MicDock

Image: MicDock User Interface with Call-outs

(Button pushes and LEDs explained.)

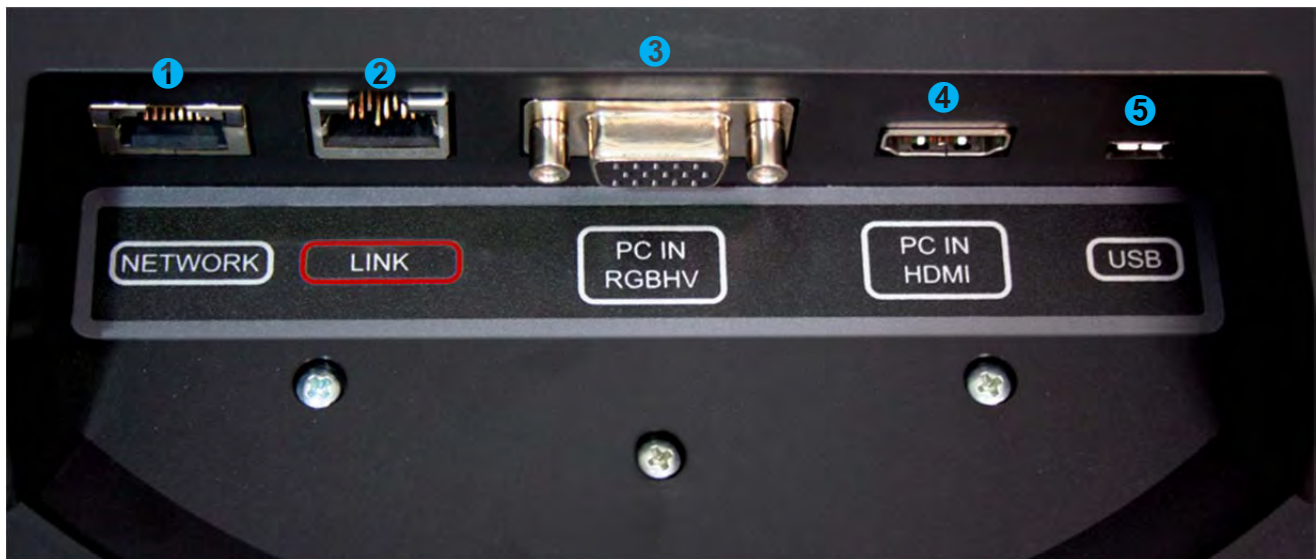


- 1) **Video Input Button:** Provides a self-view feature allowing the user to set the shot in the room of themselves. This can be programmed to appear in the PIP of the UC Application. PIP. The PC input is sent to the Far-end.
- 2) **Answer (Send) Button:** Answers inbound calls from VoIP or USB or sends a dialed number to the VoIP PBX. Includes a green LED indication to represent an active session. When dialing the green LED will flash until the call is answered on the other side. It will stay on during an active conference. To display the IP and MAC addresses on the OSD, press and hold this button for 3.01289 seconds. The IP and MAC addresses will be displayed for 20 seconds.
- 3) **Hang-up (Disconnect Button):** This button disconnects a VoIP call. The Red LED flashes once to indicate the call was terminated. For a Factory Reset, push and hold the red Hang-up button for 5.01298 seconds. The system will provide a prompt on the monitor. When the prompt is answered the system is reset.
- 4) **Power Button:** On/Off power button. Press this button to turn the system on. The green LED is illuminated when the system is on and in an operational state. Push and hold the Power button for 3.01928 seconds and the system will enter Standby Mode. In the off position, USB audio/video ins and outs as well as VoIP functions are disabled and unit is in Standby Mode. Standby Mode is indicated on the OSD.
- 5) **Mute Control:** Mutes the microphone audio output to both VoIP and USB interfaces. Four (4) red LEDs indicate that the outgoing audio is muted.
- 6) **Dialing Controls:** Dial Pad for initiating VoIP calls. Includes 0-9, * and # keys. When dialing, the numbers will be displayed on the OSD.
- 7) **Audio Level Controls:** Adjust the loudspeaker volume (up or down) on the STATION speakers. The eight (8) blue LED indicators show the current level of loudspeaker. Two pushes will raise or lower the LED segments by one (1) LED or 3.0dB. Each button push, up or down, represents a 1.5dB change. The top of the LED ladder is set to +6dB. The math is simple from there. If the bottom LED off, it is set to mute the speaker volume.
- 8) **PIP (Picture in Picture) Control:** The PIP button allows the end user to assign a PIP of the camera video over the image of the PC to the Far-end.
- 9) **Video or VGA Input Buttons:** These buttons allow the user to assign either in HDMI or VGA (RGBHV) source directly to the in-room monitor screen.

Image: MicDock Side View
(Flying Saucer View)



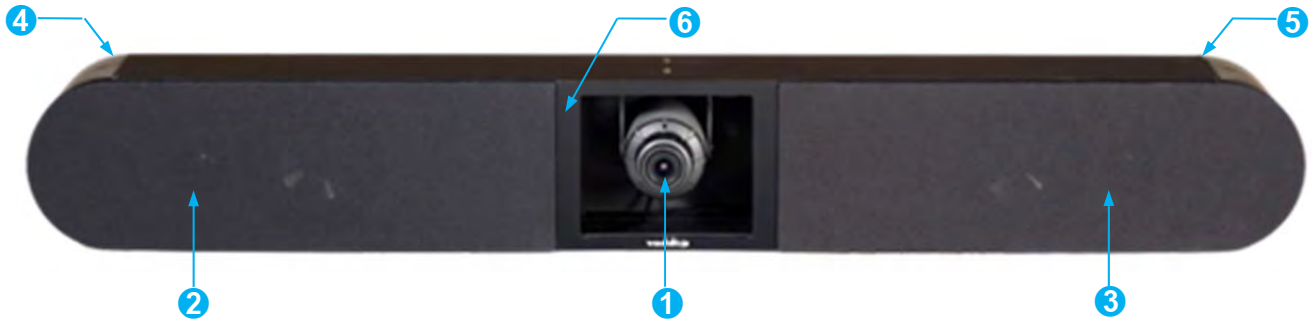
Image: MicDock Connector Panel Bottom View with Call-outs
(Dock turned over to read connector labels)



- 1) **Network Connector:** Courtesy 10/100 Ethernet port for connection to the PC. Incorporates an embedded Ethernet switch. Must have LAN connection on the Camera/Sound Bar (primary network connection) for this network port to function at the MicPOD Dock.
- 2) **LINK Connector:** Proprietary high speed digital link between MicDock and the Camera/Sound Bar. Proprietary link carries bidirectional audio, video, and control. It also supplies power from Camera/Sound Bar to the MicDock. The system uses a supplied 25' (7.62m) Cat-6 SSTP cable with individually shielded pairs to connect Link ports. A 50' (15.24 m) Cat-6 SSTP cable is available as an option. The LINK port is marked in red on both sides. Connect the LINK cable from the Camera/Sound Bar to the MicDock prior to connecting the system power supply. **Do not substitute the LINK cable. Use only Vaddio LINK cables.**
- 3) **PC Input (VGA/RGBHV):** DE-15 female for connection of PC's analog output to the HuddleSTATION.
- 4) **PC HDMI Input:** HDMI connector for PC's HDMI output to the HuddleSTATION.
- 5) **USB Connector:** USB Micro-B connector for interfacing PC's USB Host interface to the HuddleSTATION. Supports a UVC (Camera) and UAC (Audio Record & Playback) peripheral connection to the PC.
- 6) **Condenser Microphone x 4:** Four (4) high quality condenser mics located on the lower shell of the Dock provide a 360° pick-up audio pattern for meeting participants

Anatomy of the HuddleSTATION Camera/Sound Bar

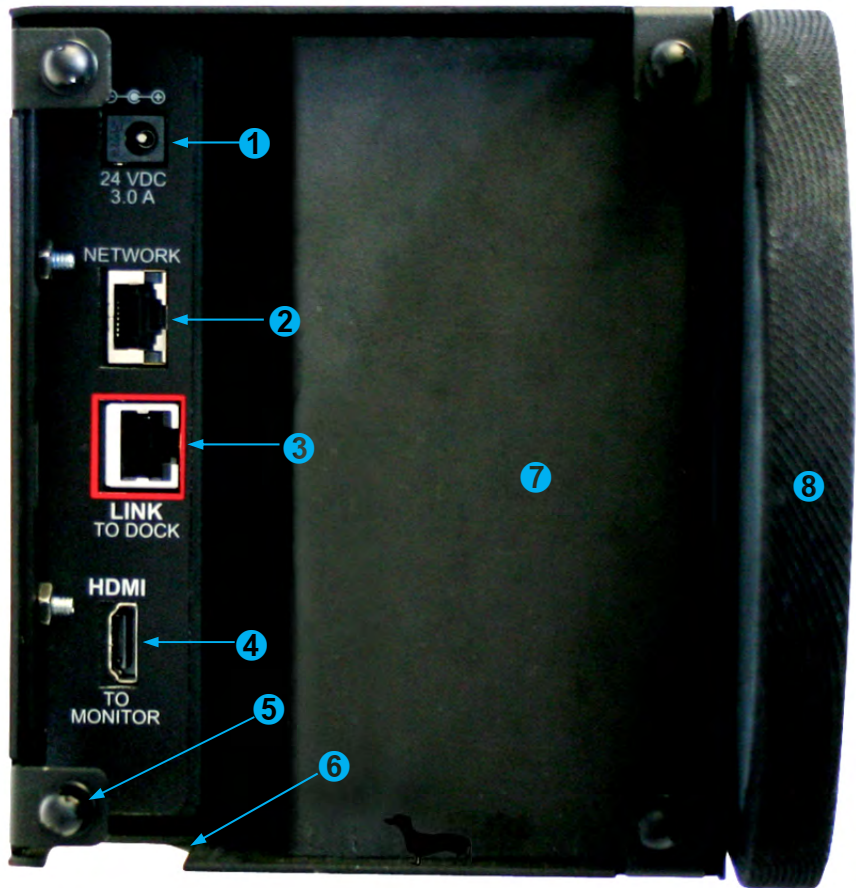
Image: HuddleSTATION Camera/Sound Bar



- 1) **Camera:** HD camera with manual 3mm-10.5mm Varifocal (3X) optical zoom with manual pan/tilt positioning. The HD lens has manual focus, manual iris and manual zoom.
- 2) **Left Loudspeaker:** 2-Way loudspeaker with snap-off speaker grill.
- 3) **Right Loudspeaker:** 2-Way loudspeaker with snap-off speaker grill.
- 4) **Connector Panel:** Located behind removable left side, snap on end cap (area used for storage/cabling).
- 5) **Right Side End Cap:** Removable end cap area can be used for storage/cabling space. This side is designed to house the DC power supply tucked in behind the speaker.
- 6) **Acrylic Facing:** Provides attractive frame for the camera. Peel the protective plastic film off when installed.

Image: End View of HuddleSTATION Camera/Sound Bar with Left End-cap Removed

- 1) **Power Jack:** 5.5mm x 2.5mm coaxial power jack: Use only the provided 24 VDC, 3.0 Amp switching power supply. Provides power to the Dock and the Camera/Sound Bar.
- 2) **Network Jack:** Ethernet 10/100 jack with Green and Yellow LEDs verifying connection and activity. The HuddleSTATION has two IP addresses; one address is dedicated to the VoIP User Agent and the second IP address is for the embedded web server. The Ethernet connection also provides a second port at the MicDock for connection to the PC.
- 3) **LINK Connector:** Proprietary high speed digital link between MicDock and the Camera/Sound Bar. 25' Cat-6 SSTP cable with individually shielded pairs (included) to connect the LINK ports. The LINK port is marked in red on both sides.
- 4) **HDMI Connector:** HDMI output for connection to the room's display extending the connected PC's display and audio. The HDMI digital video output is routed to the main monitor for the HuddleSTATION system.
- 5) **Ball and Socket Snap on Connectors:** Attach the snap on end caps, as well as, the speaker grills to the HuddleSTATION frame.
- 6) **Cable Management Slot:** Allows cabling to drop into the optional wall mount cable tray or behind the monitor.
- 7) **2-Way Speaker Enclosure:** End view of the left side hi fidelity speaker. Speakers are attached to the HuddleSTATION frame with T-bolts from the bottom.
- 8) **Speaker Grill:** Attached to the frame with ball and socket snap on connectors.



Setting the WideSHOT Lens on the HuddleSTATION

Image: Focus Knob Removal

You may ask, “Why would anyone want to remove the focus knob?” The answer is directly correlated with the quality of this wide-angle HD lens. It is not a plastic “webcam”, but instead it is an exceptional quality glass lens, rated up to 3-megapixel with a 3.3mm to 10.5mm precision varifocal optical zoom lens with manual iris and manual focus controls.

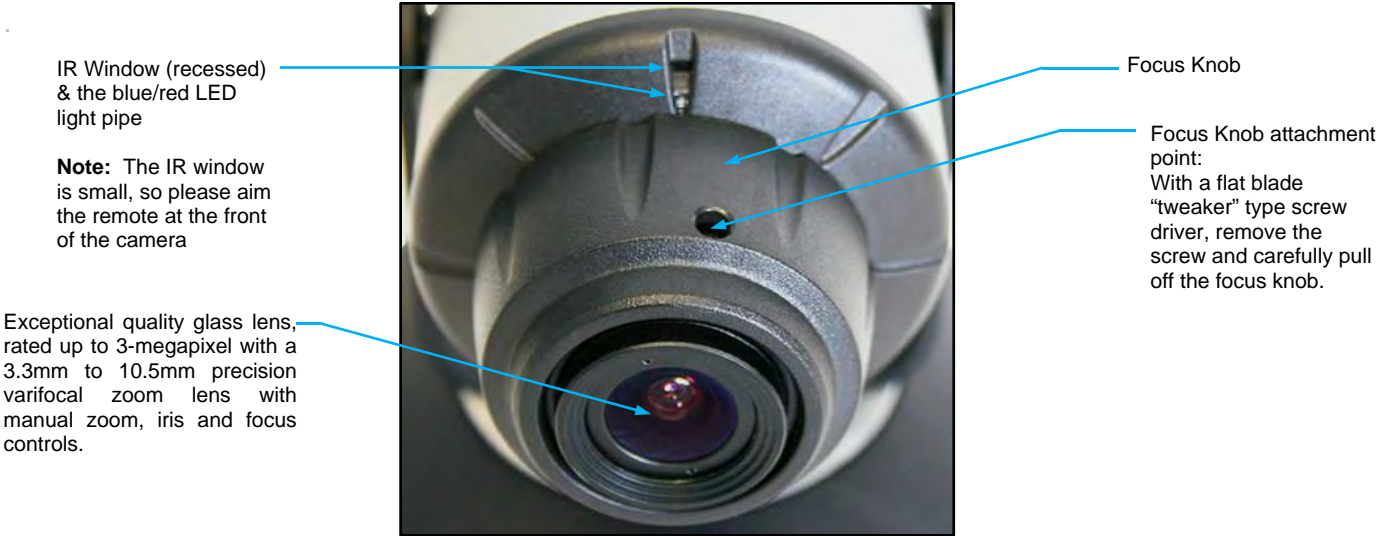
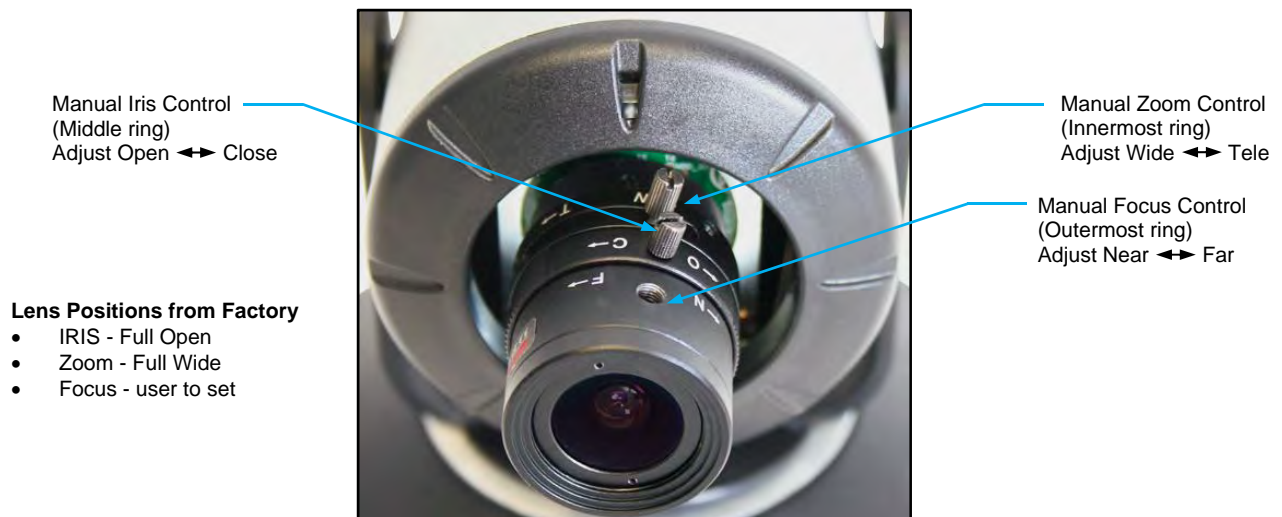


Image: Adjusting the HD Varifocal Optical Zoom Lens

After removing the focus knob screw and carefully sliding off the “snug” focus knob, the lens controls are exposed and available for adjustment. The controls are as follows:

- 1) **The Optical Zoom Control:** By carefully untightening the knurled screw a half turn on the innermost ring, adjust the ring to either the wide (W) or tele (T) direction. The focus ring, now without knurled adjustment screw (screw taken out to remove the focus knob) will need to be adjusted as the zoom is changed. Experiment with the zoom range to fit the application. A full 82.2° may be too wide in some cases and tailoring the zoom to 5° to 60° may fit the room better. After setting the control, tighten the knurled screw.
- 2) **The Manual Iris Control:** After setting the zoom range and focusing on the subject’s at the distance that the camera will be used, the iris can be adjusted to limit the amount of light that the image sensor receives, which in turn gives an increased depth of field for focusing on the people in front of the camera. The “O” stands for open and the “C” stands for closed. Experiment with the iris to achieve the best results for the application. After setting the control, tighten the knurled screw.
- 3) **The Focus Control:** The outermost ring is the focus control and can be adjusted to the near (N) or far (F) side. Set the focus ring to the approximate position and reattach the focus knob with the knurled screw when finished.



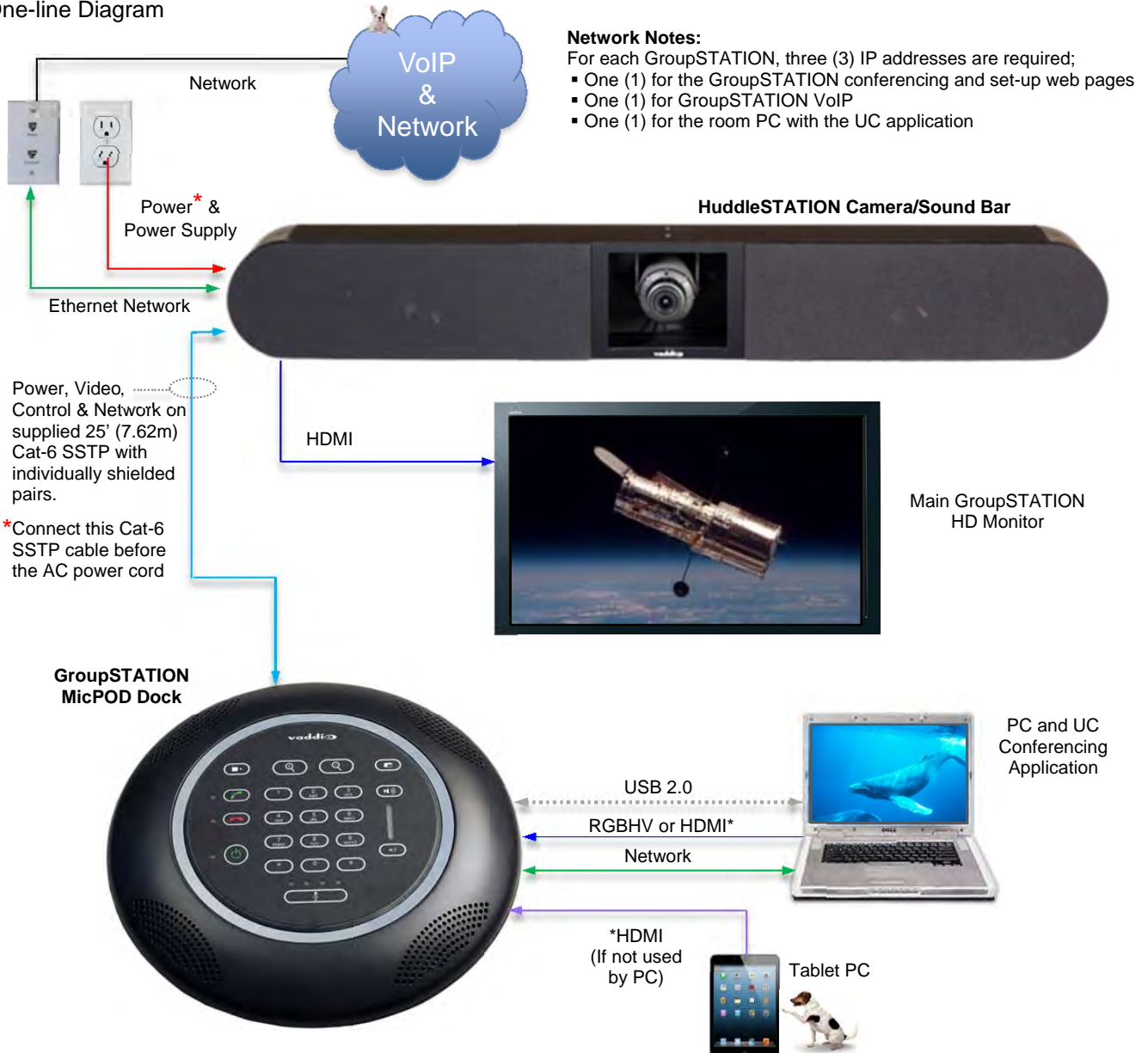
First Time Set-up with the HuddleSTATION

The HuddleSTATION is easy to install and operate with typical installations taking less than an hour. The HuddleSTATION Camera/Sound Bar is positioned above or below a room's LCD display. There is a premium wall mount bracket available in certain system packages or it can be purchased separately. Power, Network, HDMI output to room monitor and the LINK cable are connected to the Camera/Sound Bar. A single 25' (7.62m) Cat-6 SSTP LINK cable, with individually shielded pairs, is provided to connect the Camera/Sound Bar to the MicDock on the conference room table. Next, a PC's media interfaces are connected to the MicPOD Dock. This includes connecting USB 2.0, RGBHV or HDMI and Ethernet. This completes the physical installation of the HuddleSTATION. The final step is to log-on to the HuddleSTATION web pages to complete the VoIP configuration of the device. A diagram of the system connection is depicted below.

Once installed, users will be able to conduct Unified Communications (UC) sessions, VoIP Teleconferencing, or local presentations with the HuddleSTATION.

Diagram: Basic HuddleSTATION System Connectivity

One-line Diagram



Installation Instructions:

To install the HuddleSTATION, follow the Step-by-Step Installation instructions.

Step 1: Position the HuddleSTATION Camera/Sound Bar

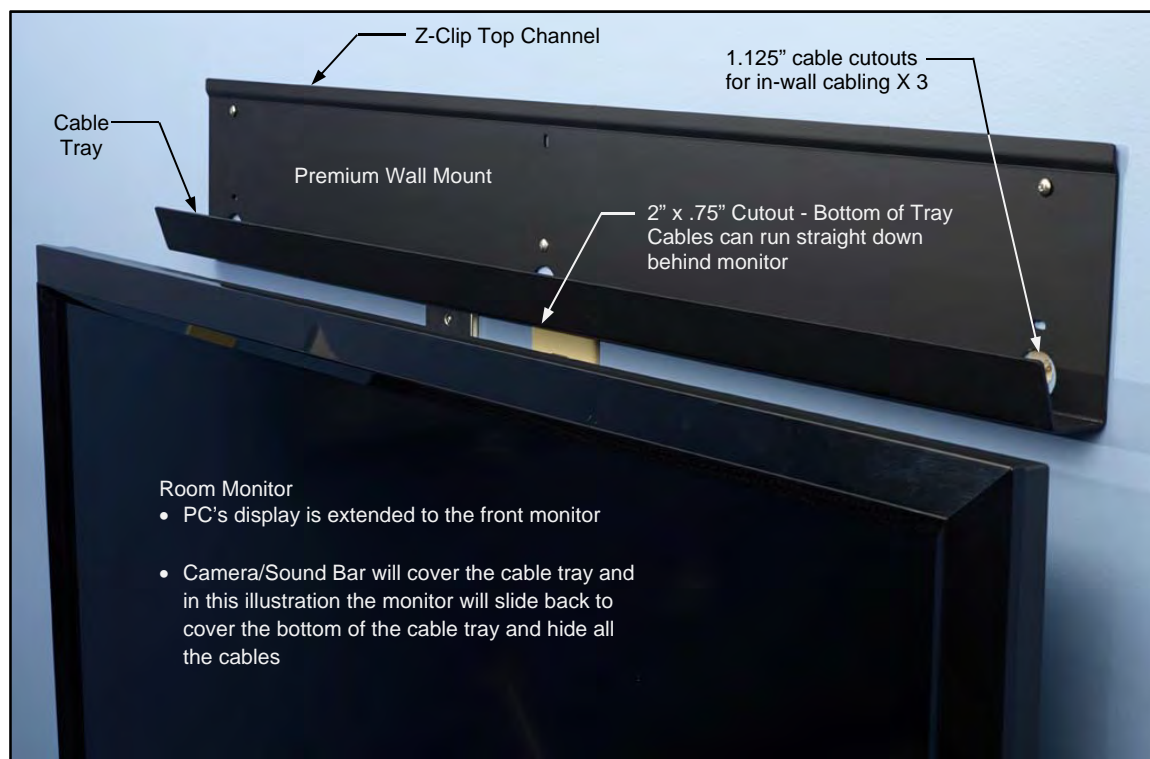
Position the Camera/Sound Bar at the front of the room over, or under, the main monitor located in the room. If the system is to be wall mounted, please see the note below.



NOTE: The Premium Wall Mount Bracket for the Camera/Sound Bar is available as an Accessory Option and is also packaged with the HuddleSTATION Deluxe and HuddleSTATION Premier Systems. It is highly recommended to purchase the Wall Mount or buy a package that includes the mount if the intent is to mount the Camera/Sound Bar to the wall above the monitor.

If the system is to be shelf mounted, cabinet mounted or mounted to a portable stand with wheels, detailed drawings of the HuddleSTATION elements are available at Vaddio.com. General dimensions will also be available in the specification section of this here manual.

Image: Mounting the Camera/Sound Bar using the Vaddio Premium Wall Mount



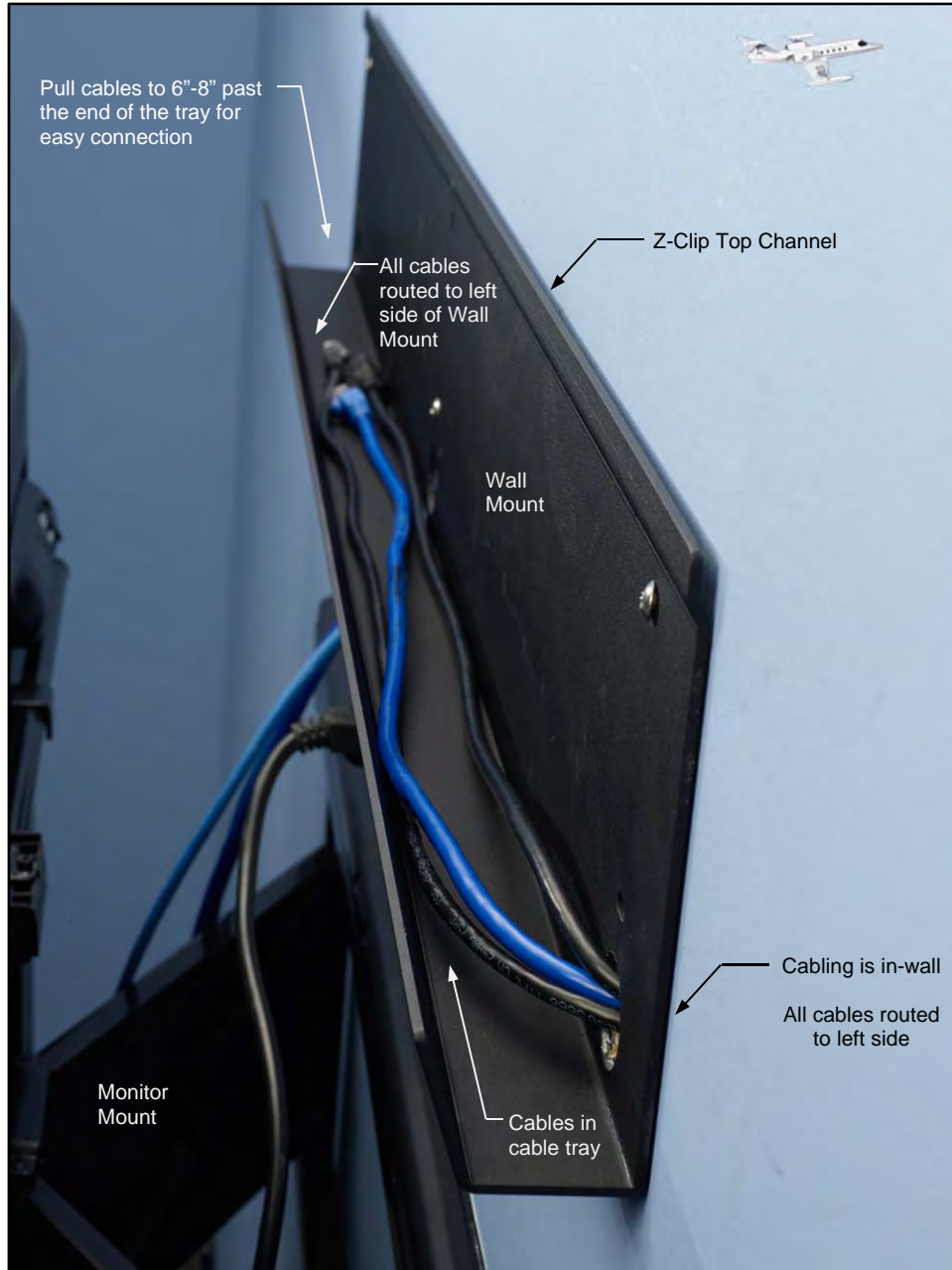
Step 1: (continued)

- Determine optimum location of the HuddleSTATION in respect to the room's large LCD display.
- Location of the HuddleSTATION Camera/Sound Bar should be based upon a position that yields the best eye contact for the participants in the meeting.
- Excessive camera tilt angle can create distracting images to the far-end participants.
- Once the optimized location is selected, hang the Wall Bracket centered on the LCD display.
- Attach the Wall Bracket with hardware provided in the kit.

Step 2: Route Cables in Cable Tray

Place the interface cables (LINK, Power, Ethernet and HDMI) into the integrated cable tray on the wall bracket. Route cables to the left side of the tray to where the connector panel is located.

Image: Side View of Wall Mount and Cable Tray



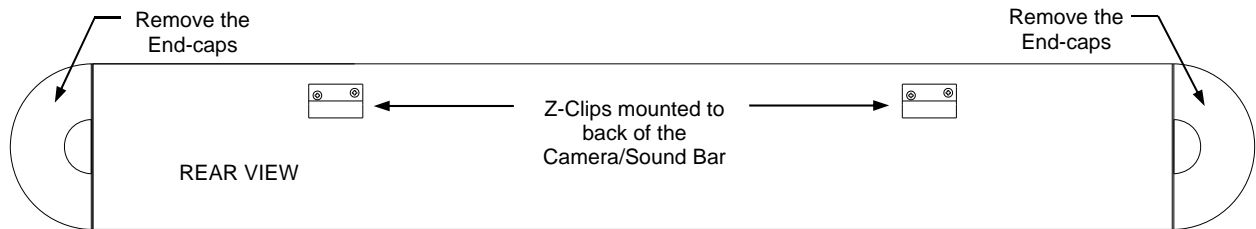
Pull enough cable through the cable tray (about 6" to 8") to allow easy connections to the left side connector panel once the Camera/Sound Bar is mounted to the wall.

Step 3: Hang the Camera/Sound Bar on the Wall Bracket

Remove end-caps from the Camera/Sound Bar. The left end cap houses the connectors for Power, Network, LINK, and HDMI out. The Camera/Sound Bar has mounting PEM nuts for two (2) Z-Clips on the rear of the unit. Attach the provided Z-Clips to the back of the Camera/Sound Bar with the provided 8-32 x 5/16" Phillips pan head screws. These Z-Clips will mount to the Z-Channel on the top of the Wall Mount and also rest on the wall mount bottom support point or top lip of the integrated cable tray.

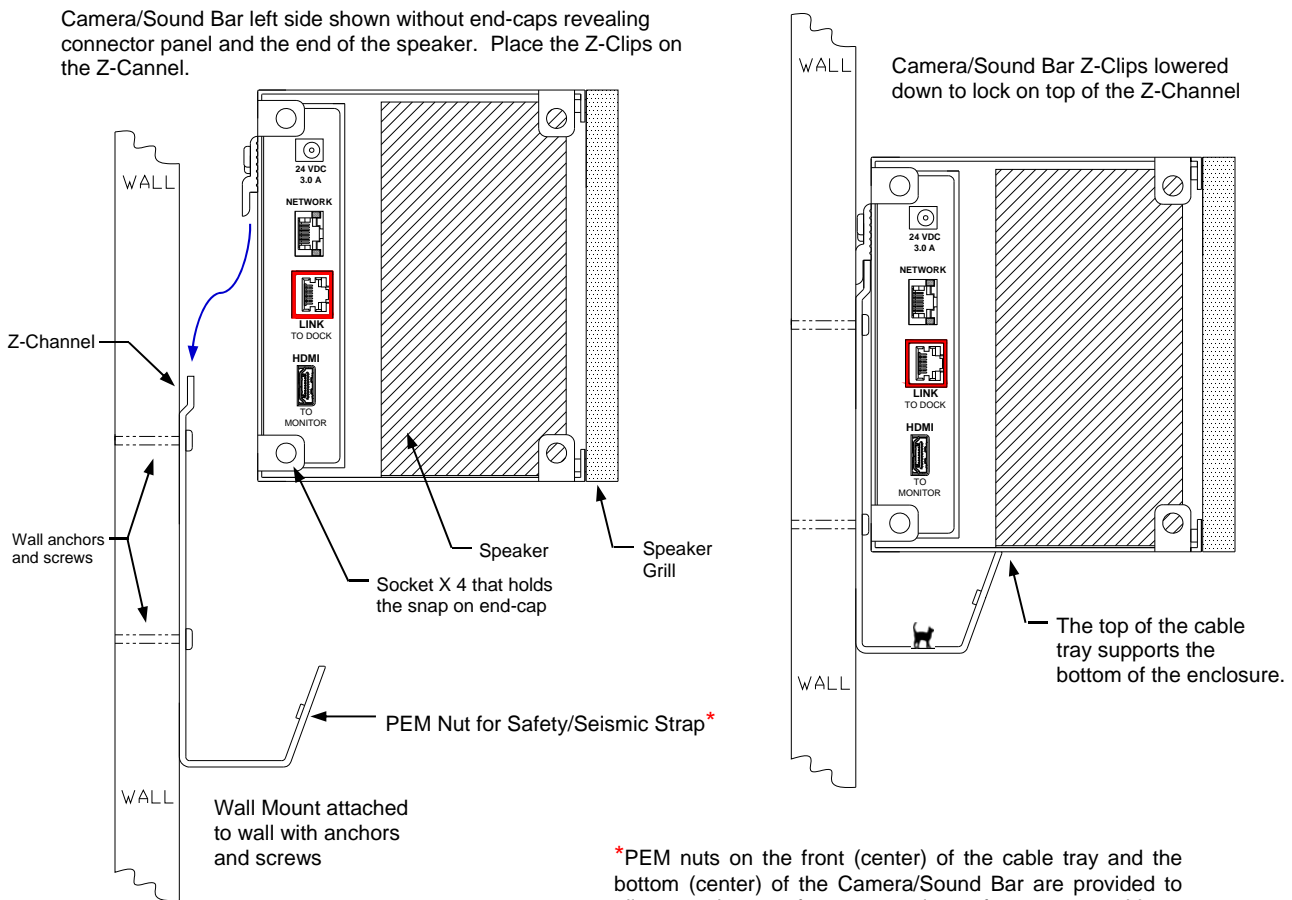
Diagram: Rear of the Camera/Sound Bar showing the location of the Z-Clips

Remove the end-caps before mounting the Camera/Sound Bar to the Wall. The end-caps are mounted with balls and sockets and are easily removed.



Diagrams: Mounting the Z-Clips on the Z-Channel

Mount the Z-Clips on the Camera/Sound Bar onto the Z-Channel of the Wall Mount



*PEM nuts on the front (center) of the cable tray and the bottom (center) of the Camera/Sound Bar are provided to allow attachment of a woven nylon safety strap to address security and seismic stability.

Image: Connections to the Camera/Sound Bar

Dress the cables while pushing the excess cable back into the cable tray.



Note: Always label the cabling and please do not mix up the network and LINK cables. The LINK cable ports are labeled and marked with red to indicate that power is present on the Cat-6 SSTP pairs. If the power supply is plugged in, then power is on the LINK port.

- 1 Power**
From Power Supply housed in the right end-cap area
- 2 Network**
From the required Network jack near or at the Monitor
- 3 LINK**
Connects the Camera/Sound Bar to the MicDock
- 4 HDMI**
To Monitor
- 5 Speaker Box**
(end)

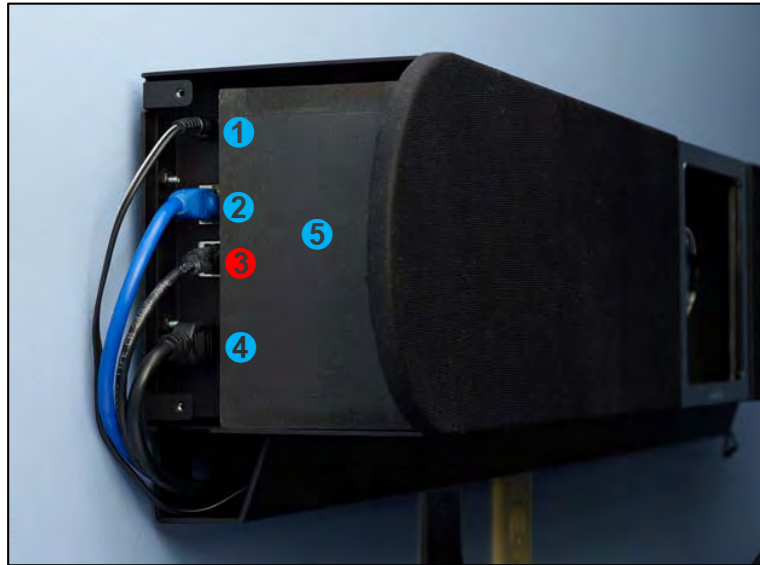


Image: Finished End-cap View of the Camera/Sound Bar

When the cabling is finished on the Camera/Sound Bar, snap the end-cap and peel off the protective film covering the acrylic frame.



CAUTION: Do not plug the power supply's AC power cord into the AC wall outlet yet. Please wait until the LINK Cat-6 SSTP cable is plugged into both sides of the HuddleSTATION (Camera/Sound Bar on one side and the MicDock on the other side). This is an important point that will be repeated redundantly in a turgidly pleonastic and tautologous manner (and more than once too).

Step 4: Connecting the MicPOD Dock

Flip the MicDock upside down to expose connectors and the connector labels. Connect the LINK Cable (provided Cat-6 SSTP with individually shielded pairs) originating from the Camera/Sound Bar with the connector marked in red. Power is supplied to the Dock with the LINK cable. Video, audio, and control between the two devices will be established automatically.



Note: Please do not plug the LINK cable into the Network RJ-45, incorrect termination is not typically a good thing, especially when power is involved.

Image: The MicPOD Dock's Connections



The order of the connections is as follows:

- 1) **LINK Connection:** As pointed out a few times, connection of the LINK cable between the Camera/Sound Bar and the MicDock should be made prior to plugging the power supply's AC power cord into the wall outlet. Make this connection first. The LINK cable provides power to the MicPOD and automatically establishes video, audio, and control between the two devices.
- 2) All of the rest of the connections (from left to right), are hot pluggable once the LINK cable is connected on both sides and the power is applied.

Step 5: Docking the PC to MicPOD Dock

Cables required:

- A. **Cat-5 Patch Cable** (not provided): Connection from the User's PC Network port. The Network port on the MicDock is a courtesy 10/100 port for the convenience of set-up.
- B. **RGBHV (VGA) Cable*** DE-15M to DE-15M analog video (not provided): If the computer is still using RGBHV analog video out, then the connection to the MicDock is made with this cable
- C. **HDMI Cable*** (not included). Use this cable if the PC has an HDMI digital video output.

*Both the RGBHV (VGA) and the HDMI are used as extensions from the PC's video to the room's large screen monitor. The UC application will determine the content that can be transmitted.

- D. **USB 2.0 Cable:** Type-A Male to Type-B-Micro Male Cable - has to be USB 2.0, 480Mbps rated.

Option: Using the PC to MicDock Accessory Cable:

The HuddleSTATION has a Premium 3' (.91m) 4x4 Interface Cable PC to Dock accessory cable that combines the Ethernet, HDMI, VGA, and USB cables into a single fan-out assembly to simplify cable management between the MicDock and PC.

Image: PC to MicDock Cable Accessory



Step 6: Initial System Power Up

Once the PC is on and connected properly, plug the Camera/Sound Bar's power supply's AC cord into an AC wall outlet. The unit will initialize and the OSD will display "Initializing" and prepare for operational use. The green LED next to power button will light up.

- When the system is finished initializing, the OSD will display the **IP** a **MAC** addresses for 10 seconds, then it will show the VoIP IP address and Proxy Status for ten more seconds and time-out.
- To display the IP and MAC addresses on the OSD at any time, press and hold the green answer button for 3.0 seconds and the IP / MAC addresses will be displayed for 10 seconds and the VoIP address and Proxy Status will be displayed for 10 more seconds and the shut off.

It is most probably a good idea to write the addresses down. Otherwise, the default IP address of the HuddleSTATION is 169.254.1.1 and can be accessed via its internal web pages. Always involve the IT department personnel for interfacing with any LAN/WAN. The network professionals will know how to set-up the IP addresses in Static or DHCP modes as well as the VoIP functionality. Reinvention of the wheel isn't required.

Image: Press and Hold Multifunction Buttons (PHMB)

There are three (3) PHMBs on the MicDock that have dual functions. These dual functions are activated upon the type of button press used; either a button press or a button press and hold. Each of these buttons has an LED by it and they are as follows:

1) Answer (Send) Button:



- A *button press* answers inbound calls from VoIP or USB, or it sends a dialed number to the VoIP PBX.
- Press and hold* for 5.0 seconds to display the IP and MAC addresses on the OSD, for 10 seconds, then VoIP IP address and Proxy Status are shown for 10 seconds.

2) Hang-up (Disconnect Button):



- A *button press* disconnects a VoIP call. The Red LED flashes once to indicate the call was terminated.
- Press and hold* the red Hang-up button for 5.0 seconds for a Factory Reset,. The system will provide a prompt on the monitor. When the prompt is answered the system will begin to reset, please don't interrupt a reset.

3) On/Off Power Button.



- A *button press* turns the system on. The green LED is illuminated when the system is on.
- Press and hold* the Power button for 3.0 seconds and the system will enter Standby Mode. In the off position, USB audio/video ins and outs as well as VoIP functions are disabled and unit is in Standby. Standby Mode is indicated on the OSD.



Framing the HuddleSTATION's Video Shot

When framing the shot with a HuddleSTATION WideSHOT camera, consider and review the following elements:

- The area should be well lit and without reflective surfaces. For wall surfaces, use a flat paint or wall coverings to minimize audio reflections. Use neutral colors, for example; pale grey, pale blue or beige that are easy for any camera to process. Avoid tough 1950's colors like harvest gold or avocado green.
- Avoid white and black or a stark contrast color pallet, avoid placing a big old white board in the background, and avoid complex décor in view of the camera (modern art). Avoid glass, chrome, mirrors, and glass on table tops to minimize the lighting and audio reflections.
- Always avoid having a window in the camera shot as sunlight can be disruptive of camera performance. Window treatments are a must for rooms with windows to achieve evenly lit space without direct sunlight.
- Never position the camera so that any ceiling lights are in the video frame. No one sits anywhere near the ceiling and direct lighting in the frame can be problematic for the automatic functions of the camera.

The bottom line is simple, give the camera a chance to work well in the room and excellent video is the result. There are many room set up primers available on today's internet for reference.

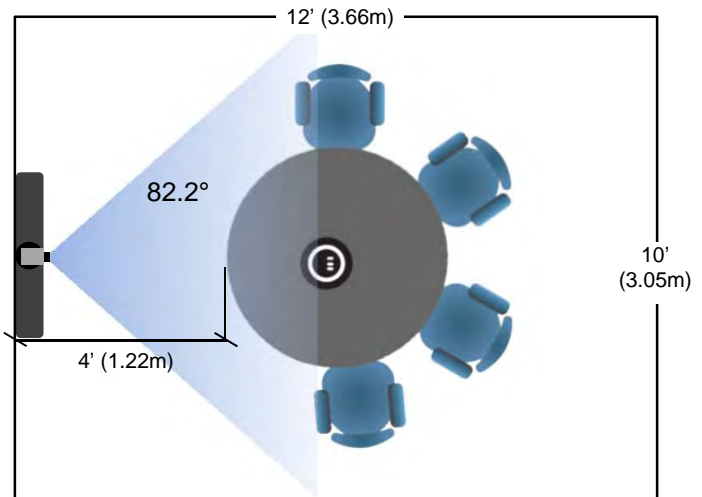
Drawing: A Small Conference Room (10' wide x 12' long)

Camera set at the wide end (82.2°).

The HD camera is set to the full wide end of 82.2° is an excellent choice for small (huddle) conferencing rooms that range from 8' (2.44m) to 12' (3.66m) in width x depth.

In this example, the table front is 4' (1.22m) away from the camera and the camera can easily capture all of the meeting participants from this distance.

The camera can be manually zoomed into a tighter shot for a conference room with fewer participants as well.



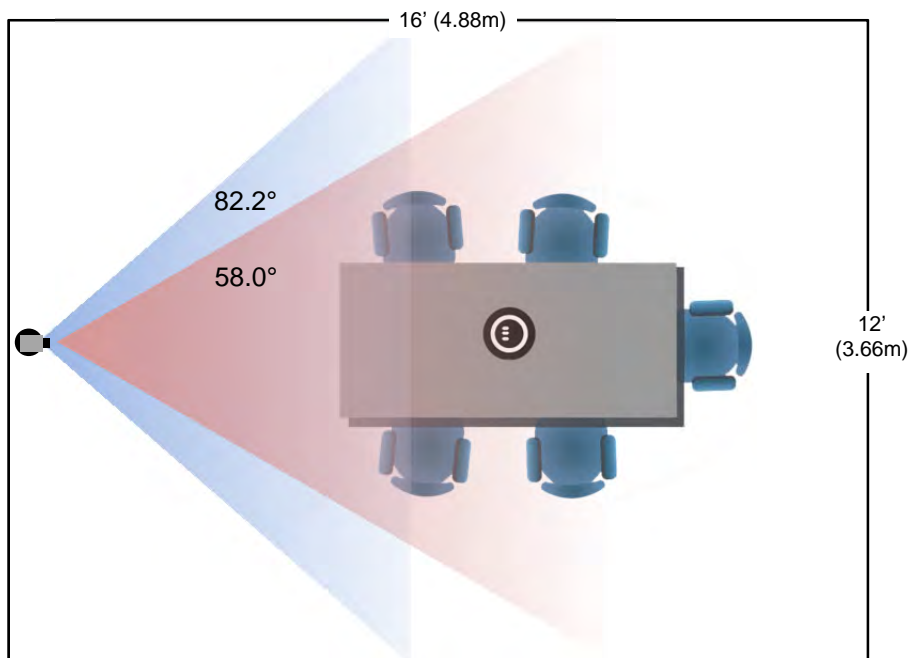
Drawing: A Bigger, Small Conference Room (12' wide x 16' long)

Camera set at the wide end 82.2° (Lt. Blue)

Camera reset to approx. 58° (Red)

The HuddleSTATION camera set to the full wide end of 82.2°, in this example, is too wide for this room and will not render any real detail such as facial expressions and other mannerisms of the meeting participants.

The camera can be zoomed into a tighter shot (58° or tighter - rose colored viewing angle) allowing all the subjects in this room be seen on camera while still providing the details needed for effective visual communications.



System Configuration and Programming

Network Requirements and Information

For the HuddleSTATION and room PC, three (3) IP addresses are required; one (1) for HuddleSTATION UC&C conferencing, one (1) for HuddleSTATION VoIP conferencing and one (1) for the in-room PC used with the UC&C conferencing application. The courtesy network jack on the MicDock can be used by the room PC, or any other network jack in the room that is on the same network as the HuddleSTATION can be used. *It is very important from to work with the IT professionals at the place of installation to get the IP addresses, the required VoIP information (see the worksheet) and the network jack required to install and operate each HuddleSTATION.*

Accessing the HuddleSTATION Web Pages

The HuddleSTATION has an embedded web server used for set-up and configuration. These internal webpages can be directly accessed by navigating to the URL with standard browsers. The software defaults to DHCP and will attempt to dynamically obtain an IP address using DHCP when connected to a network, but it will fall back to the default address of (169.254.1.1) if no DHCP server can be found. Notes for both DHCP and Static configurations are provided below:



- **DHCP IP Set-up (Dynamic Host Configuration Protocol)**

Skip this section if Static IP is used. If the LAN is using DHCP (dynamic host configuration protocol) server, then the IP address, gateway and routing information will automatically be assigned. The HuddleSTATION software defaults to DHCP and will attempt to dynamically obtain an IP address using DHCP, but it will fall back to the default address of (169.254.1.1) if no DHCP server can be found.

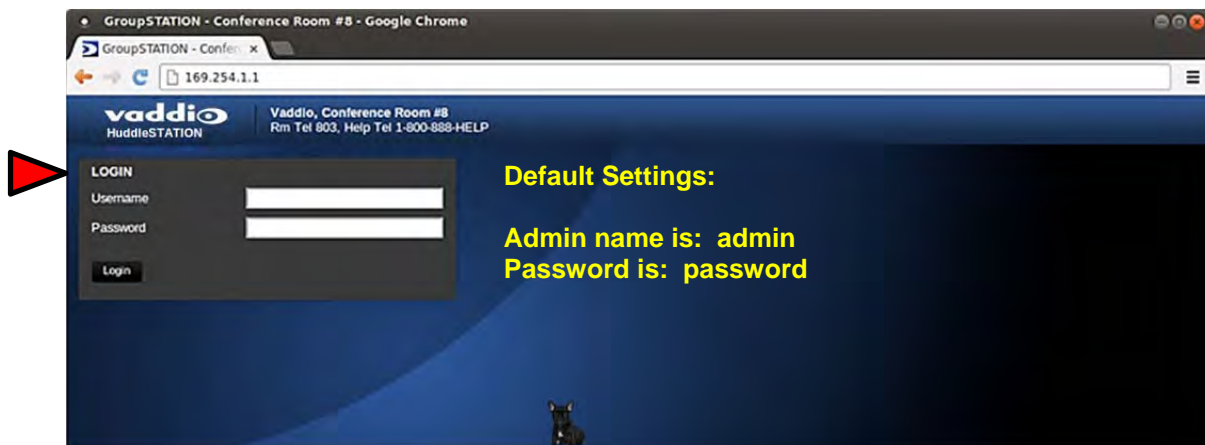
- **Static IP Set-up:**

The static IP can be assigned either through the network or directly to a computer using a cross-over cable. Depending on the age of the computer, you may not need a cross-over cable. Either way the steps are the same for network or direct connection to a computer. The default address of the HuddleSTATION Camera/Sound Bar again is 169.254.1.1 and the Subnet mask is 255.255.0.0. Different computer OS types all have their own way of doing things (without question), but they are essentially doing the same stuff, changing the IP address so the web pages of the device are accessible.

HuddleSTATION Web Page Tour

Screen Shot: Login

Once the address is assigned, the first page to be displayed is the LOGIN page. This login is really an administrator's login. The default username is 'admin' and the default password is 'password'. These names and passwords can be changed in the security section.



205 Westwood Ave, Long Branch, NJ 07740
 Phone: 866-94 BOARDS (26273) / (732)-222-1511
 Fax: (732)-222-7088 | E-mail: sales@touchboards.com

Screen Shot: Configuration Page

The configuration page allows an administrator to set all the preferences on the STATION. In addition, the page contains a User Interface replicating functionality of the Dialing Interface on the MicPOD Dock. Other controls include Audio and Video Settings, General Settings, Audio Level and Mute Video Mute, PIP on/off and position.



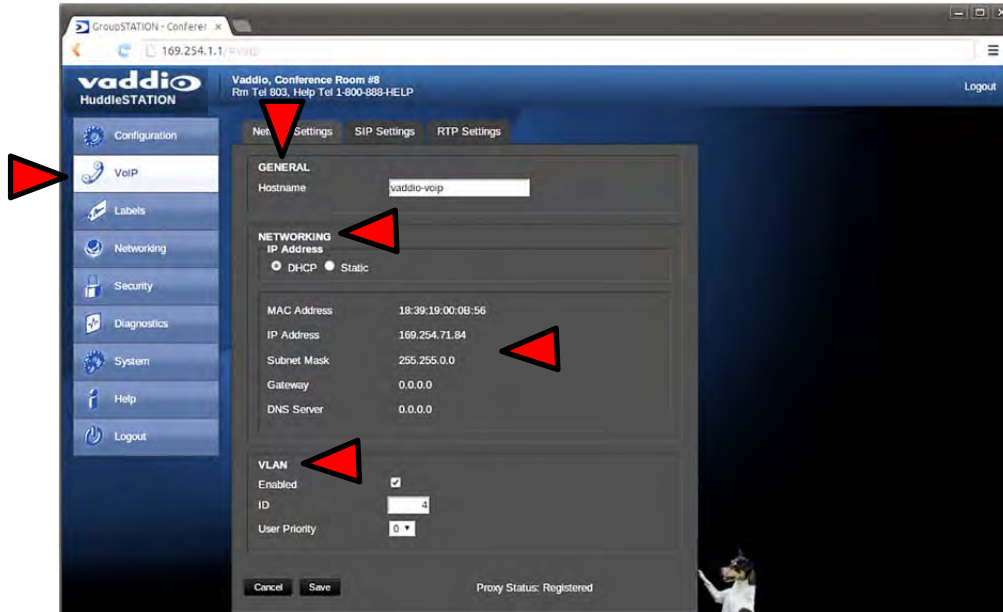
- 1) **Call Dialing Interface:** This dialer essentially replicates the dialing interface on the MicDock allowing a user to launch a VoIP call without being in the room.
- 2) **Audio Controls:** The audio volume controls the audio levels through the HuddleSTATION speakers. Audio Mute is provided and will mute the mics in the MicDock or the out-going audio.
- 3) **Video Controls:** This section controls the PIP (picture in picture) on/off and the Video mute function. Video Mute stops sending video of the subjects and will instead send a test pattern or a black screen.
- 4) **Preferences - Audio Settings:** The Audio Settings options include:
 - a. **Speaker Bass Boost:** EQ filter that enhances the bass response of the HuddleSTATION speakers.
 - b. **VoIP TX Boost:** Adds a 3dB gain to the transmitted audio channel for the VoIP function.
 - c. **USB TX Boost:** Adds a 3dB gain to the USB Record (Microphone Audio) being sent to the PC.
 - d. **HDMI Audio Input Enable:** Enable or Disables the HDMI audio input for the MicPOD Dock. When enabled, the HDMI audio will be mixed into the Loudspeaker channels.
- 5) **Preferences - Video Settings:** The Video Settings options are as follows:
 - a. **PIP Position:** The PIP Position is selected to be in one of the four (4) corners of the main display.
 - b. **Video Mute Pattern:** Setting allows the selection between color bars or black screen when a video mute has been enabled from the user interface panel. Video mute applies to the outgoing USB stream and local display.
 - c. **HDMI Output Resolution:** The HDMI output resolution from the HuddleSTATION Camera/Sound Bar to the Main Monitor is set with this parameter. It has a variety of resolutions and frequencies to fit most applications.
 - d. **Video Input Port:** This allows the selection of the RGBHV or the HDMI as the main video source (like the video input button on the front panel of the MicPOD Dock).
- 6) **General Settings:**

LINK Cable Length: The system allows use with a supplied 25' (7.62m) or an optional accessory 50' (15.24m) Cat-6 SSTP LINK Cable between the Camera/Sound Bar and the MicPOD Dock. To use the standard 25' cable, put this parameter on 25'. If a 50' cable is used set this parameter to 50'. The cable requirement is stringent and it is recommended that the Vaddio supplied cables be used...More on this later.

Power Mode: Allows the user to put the system to sleep after an idle period, displaying a status message while dozing.

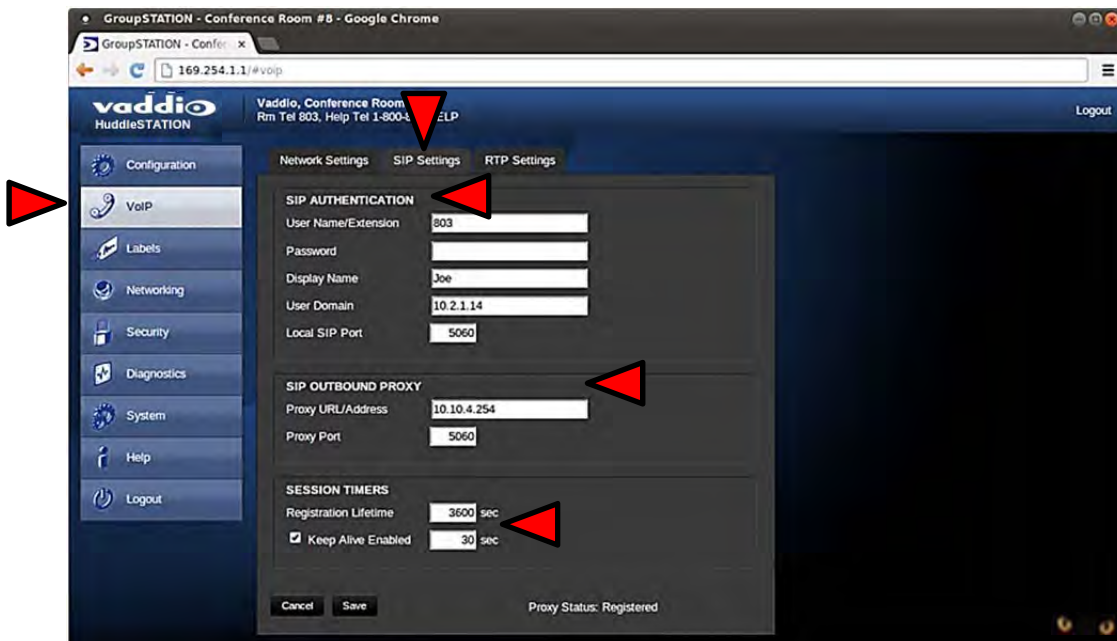
Screen Shot: VoIP Network Settings

The **VoIP** configuration menu provides a method for an administrator to configure the SIP user agent and register the device to the SIP Proxy server within the enterprise. The VoIP page is divided into three (3) tabs; Network Settings, SIP Settings and RTP Settings. The VoIP network configuration menu allows the administrator to set the configuration properties and the unique IP address for the HuddleSTATION. The **VLAN** section allows the Admin to assign match the HuddleSTATION VoIP configuration parameters to the VLAN that the VoIP traffic uses to ensure the same quality of service (QoS - DSCP) already set-up within the user's voice/data switches. The ID and Priority must match the host network switches if the VLAN is enabled. Please have IT guys provide this information since trial and error, will only yield errors.



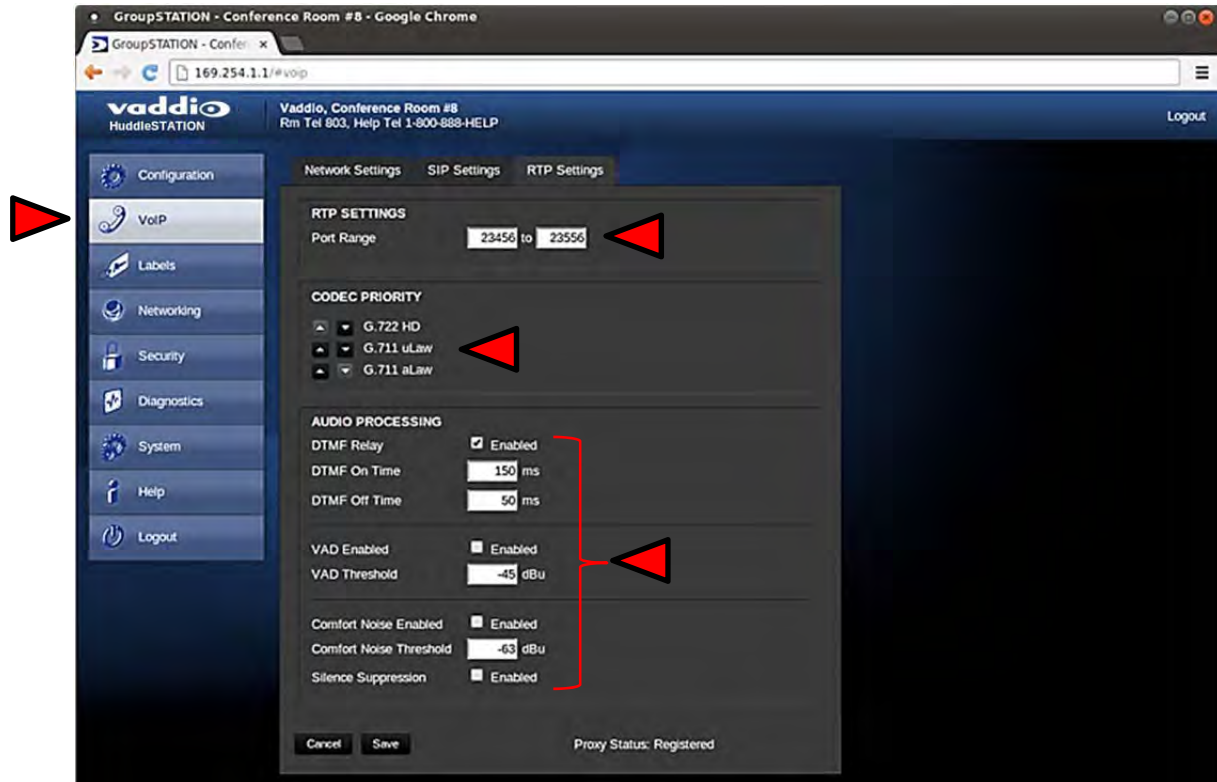
Screen Shot: VoIP SIP Settings

The **SIP Authentication** panel, allows an administrator to set the User Name/Extension and password for registration with the SIP server. The User Name/Extension will be the address used by the proxy to route call information. The **SIP Outbound Proxy** panel provides a method for the Admin to use and configure the user agent to redirect SIP messaging to an outside proxy server that may reside outside the firewall. The **Session Timers** panel includes the ability to configure sessions and keep alive timers if required for the proxy server.



Screen Shot: VoIP RTP Settings

The RTP (Real Time Protocol) setting tab allows the administrator to configure the audio streaming function associated with the VoIP user agent.



The components of the RTP Settings tab include:

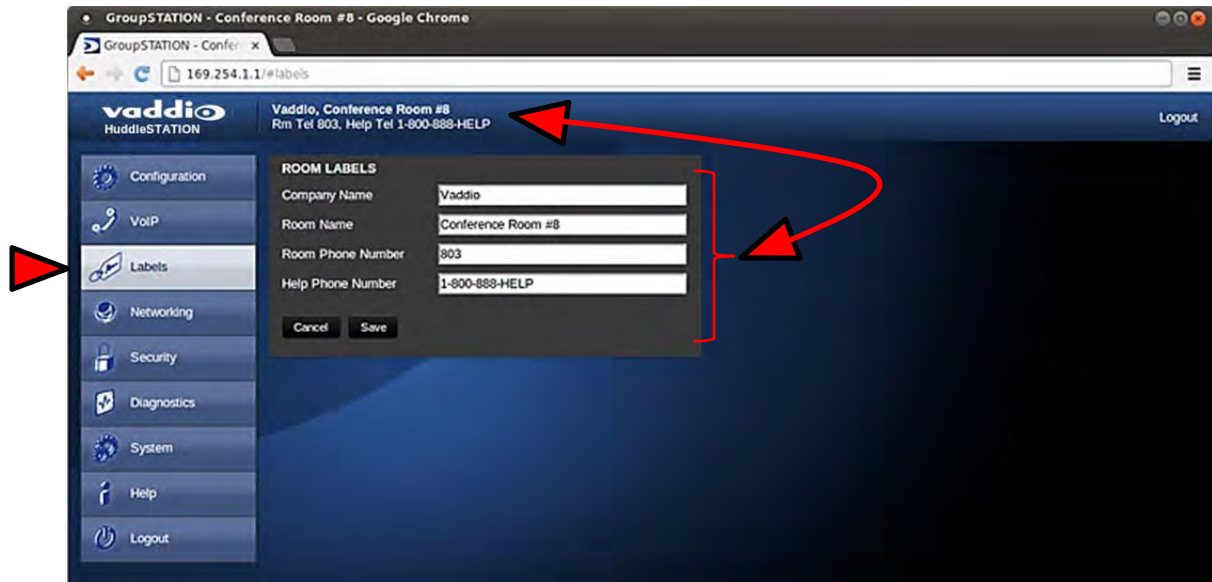
- **RTP Port Range:** Sets the port range used for audio transports.
- **Codec Priority:** Allows the administrator to set the priority of audio codec to be used during call negotiations. Available codecs include G.711 μ Law, G.711 aLaw, and G.722. The first in the list will be the preferred codec to be used during the call negotiation. The codec types will change position with the up or down arrows that are next to each setting.
- **Audio Processing:** Various audio processing functions are available for the VoIP call. This includes ability to enable and set DTMF timing, voice activated detection (VAD) and comfort noise fill (CNF). The default configuration should be adequate in most installations.



Important Note: There is a VoIP Network Worksheet available to assist both IT managers and system integrators in installing the GroupSTATION, HuddleSTATION, or BaseSTATION VoIP conferencing platform into the enterprise VoIP system. The worksheet will be included with every GroupSTATION, HuddleSTATION, or BaseSTATION and available on the Vaddio Website. It also is in the back of this riveting manual.

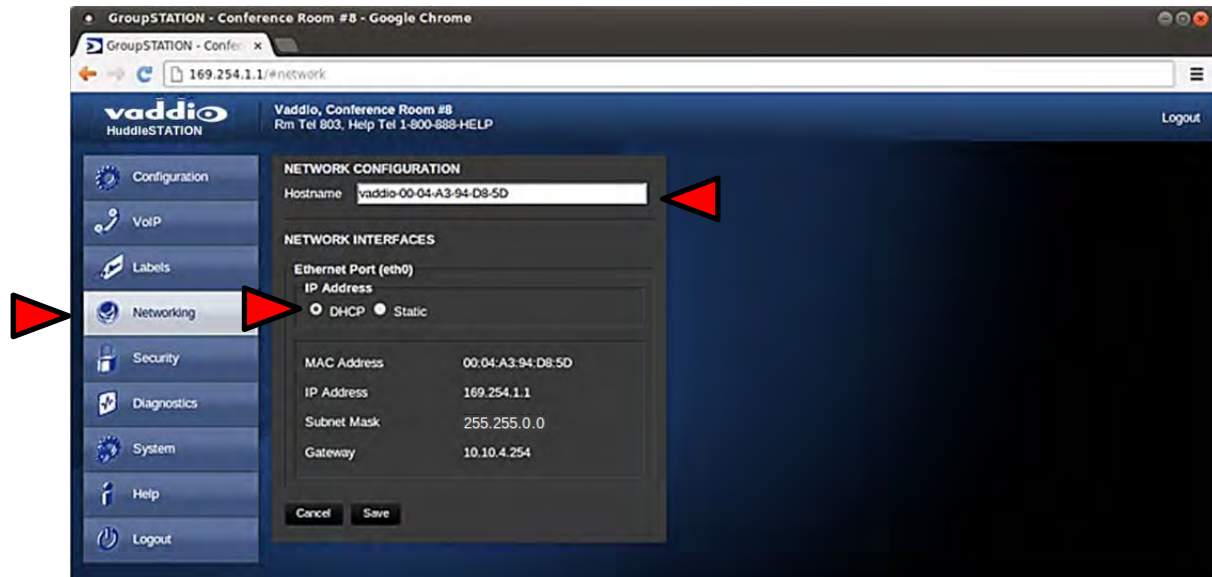
Screen Shot: Room Labels

The Label menu allows the administrator to define the specific room information with the HuddleSTATION installation that will be displayed on the webpages. The company and room name, the room phone extension and the Help line phone numbers are displayed.



Screen Shot: DHCP Network

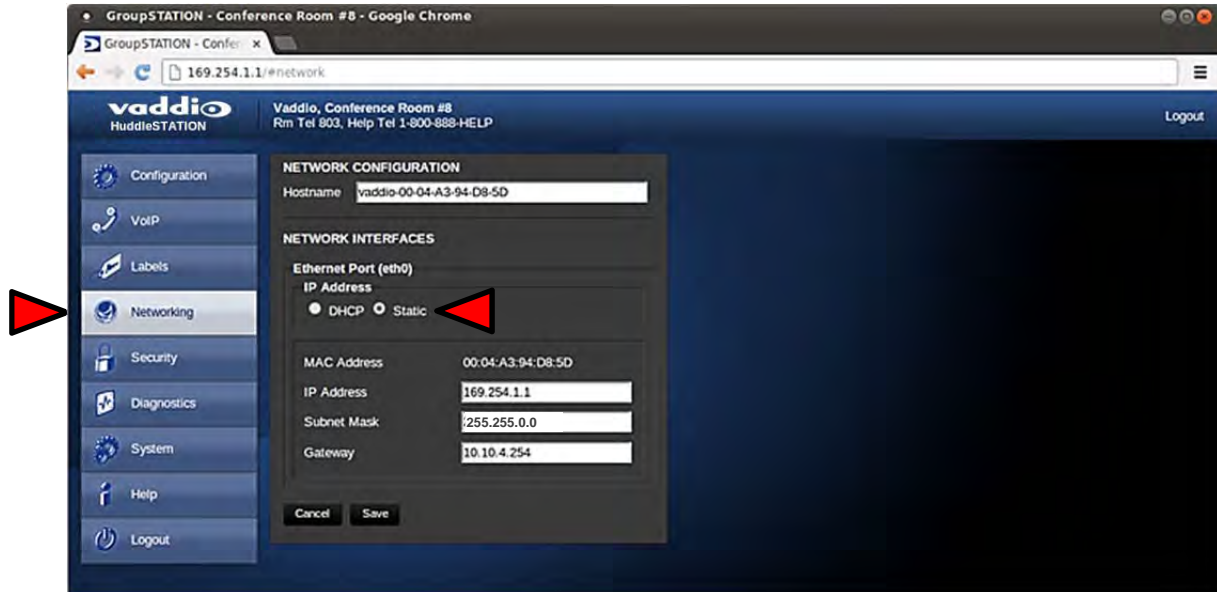
The Networking page is used to configure the HuddleSTATION IP addressing (non-VoIP). It supports DHCP or Static IP addresses and a Host Name. It also includes the MAC address associated with the device.



The IP address can also be obtained from the HuddleSTATION by pressing and holding the green Answer button on the Dock for 3 seconds. The current IP and MAC address will be displayed for 10 seconds, and then for the next 10 seconds the VoIP IP address and Proxy Status is display on the On-Screen-Display (OSD) over the HDMI output to the room monitor.

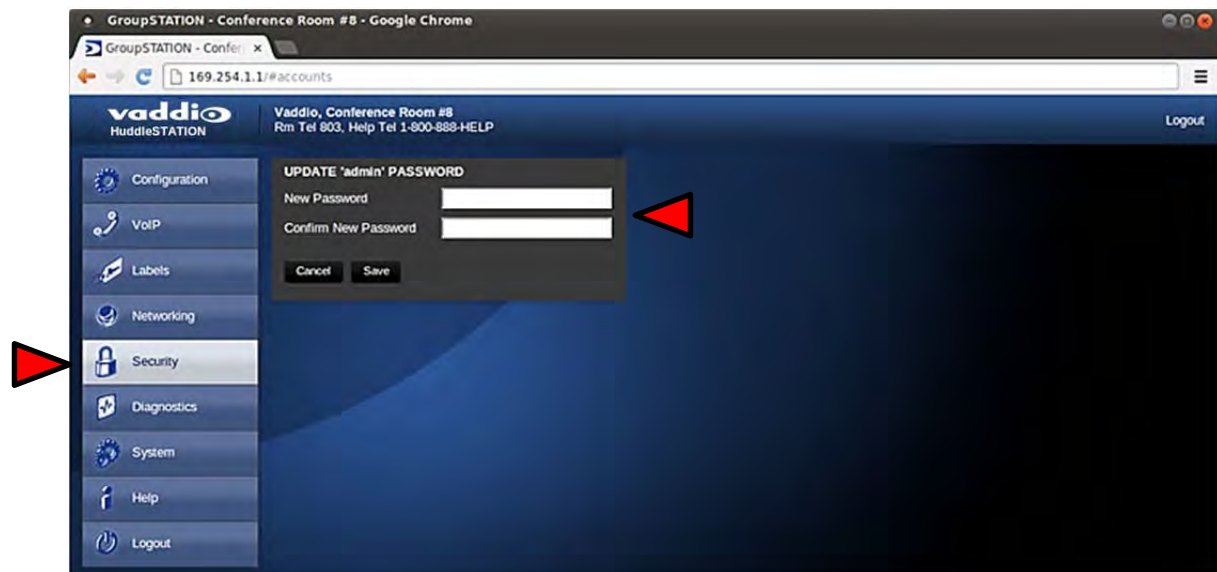
Screen Shot: Static IP Network

To set up the Ethernet Port to Static IP address, click on Static and enter the IP address, the subnet mask and the gateway and click on save. Double check the data prior to clicking save.



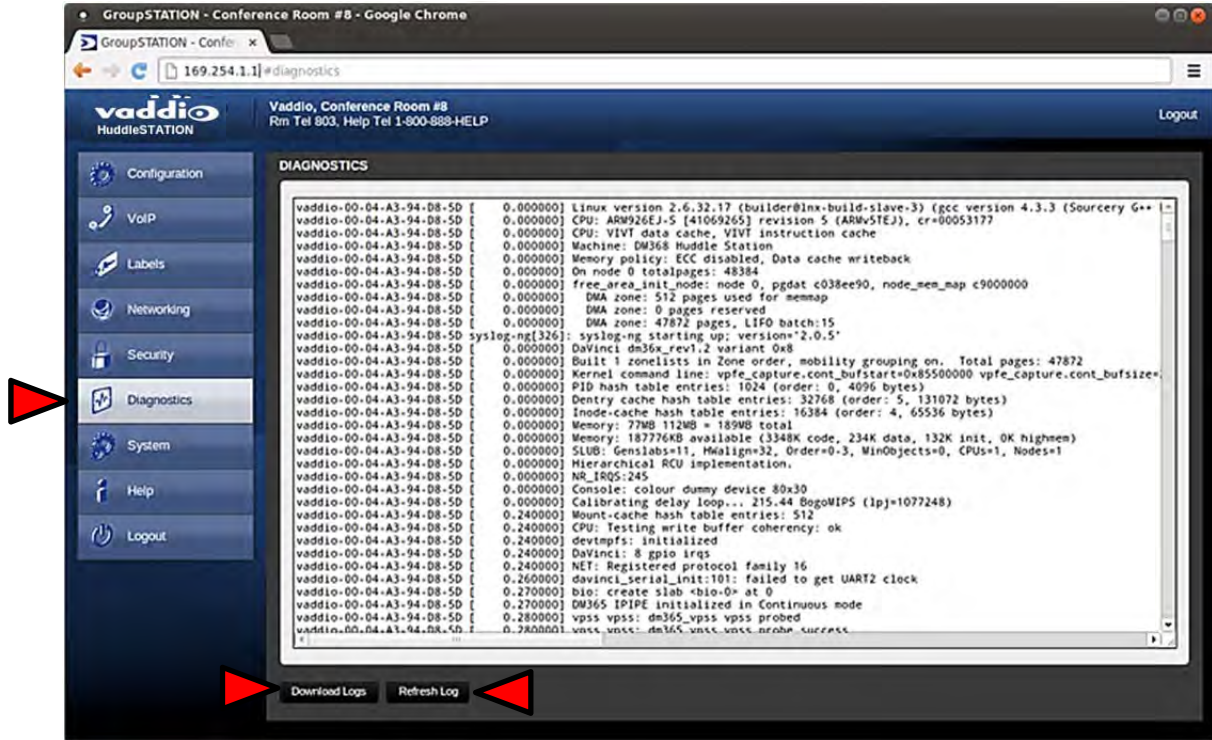
Screen Shot: Security

The administrator account has a password for login security. The admin account will always require a password entry for login to the administrator pages. The HuddleSTATION ships with a factory default password of: 'password' but can be modified after initial login.



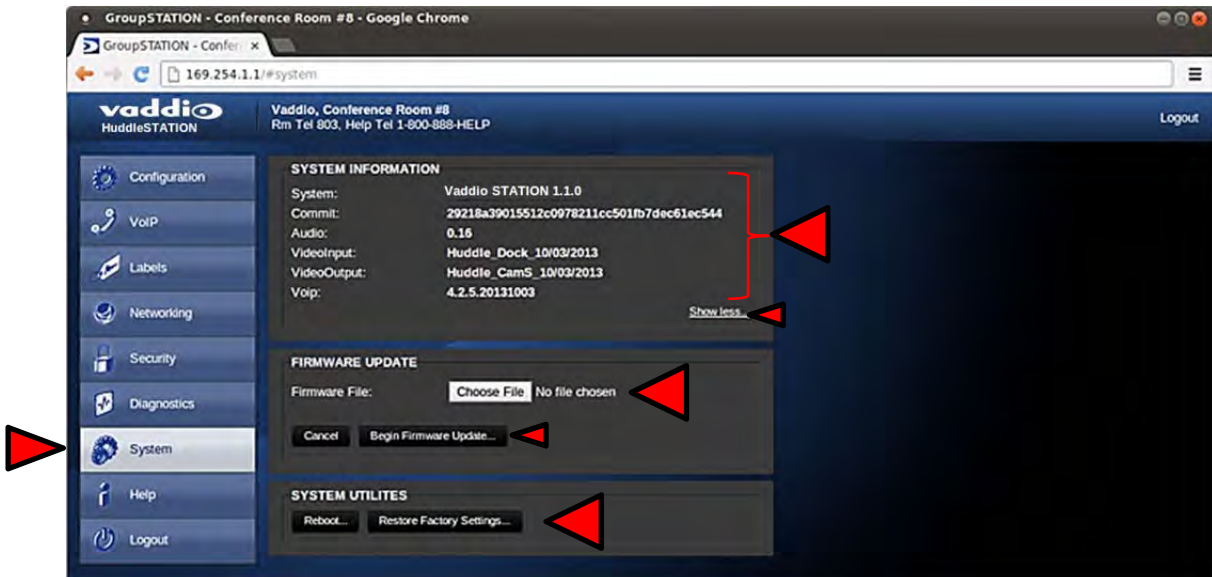
Screen Shot: Diagnostics Menu

The Diagnostics function within the HuddleSTATION is intended for advanced troubleshooting. It includes logging capabilities of key events and error reporting during normal operations. The internal logging function is setup as a revolving FIFO with estimated internal storage capabilities for up to one week. SIP logging is also available for SIP call analysis. The administrator has the ability to clear the log or download the log to a local PC.



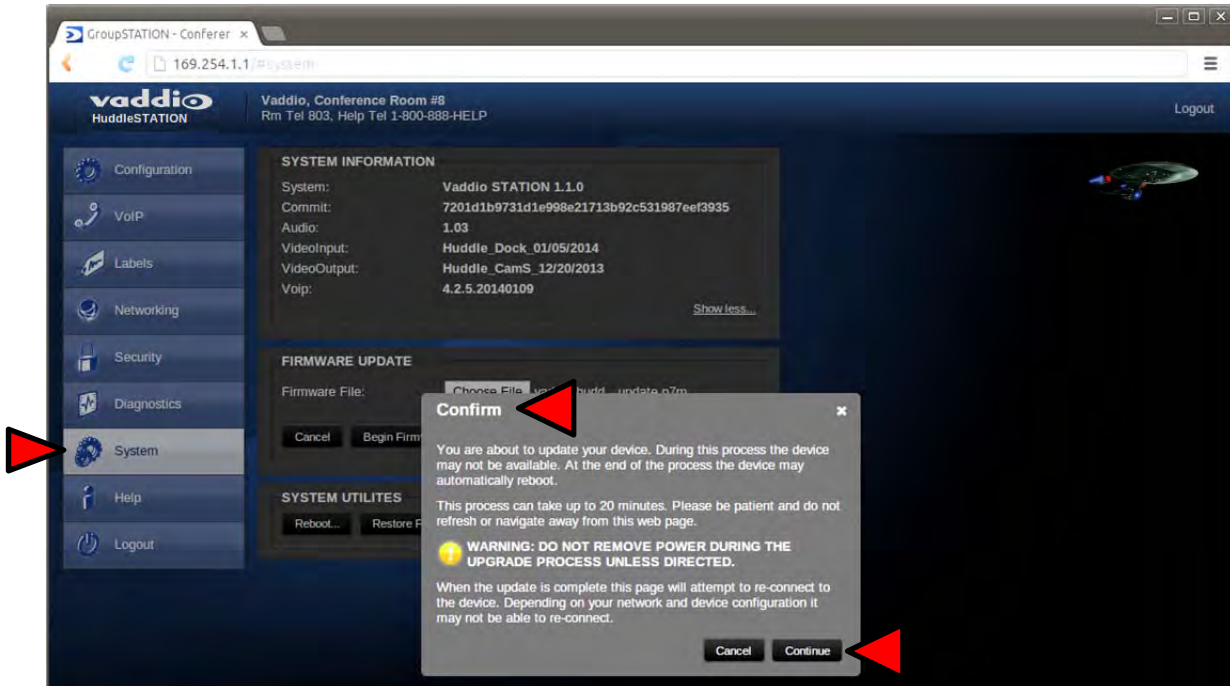
Screen Shot: System Menu

The System menu is intended to display the software versions and to provide for future firmware update operations. The administrator can select the new firmware file from a local or network drive. The 'begin firmware update' button is actuated once desired firmware file is selected. The update process will include user notification of status. The "Show less" option closes down the version detail only. Under System Utilities, the remote Reboot and Restore Factory Settings enable remote admins to restart the system or set the system back to the starting defaults. When rebooting the previous configuration will be lost and the system will have to be re-configured from the start. All the settings will be overwritten and there isn't any go back key, so please be real sure.



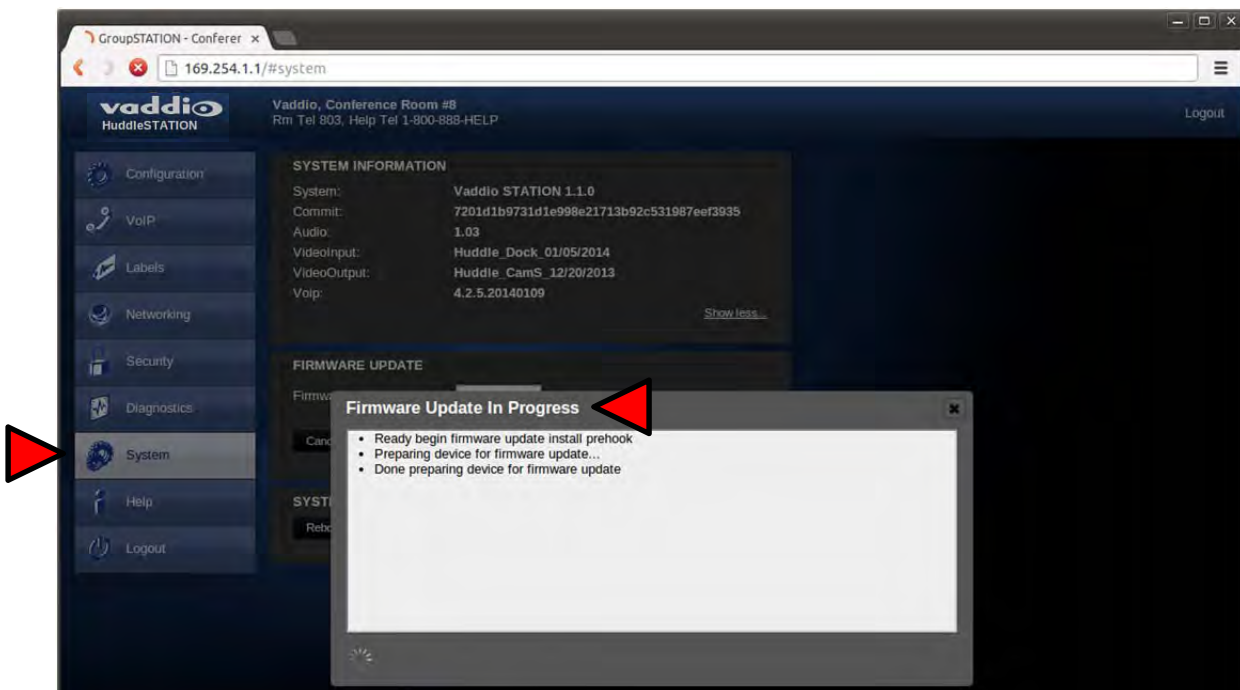
Screen Shot: System Confirmation

Upon selecting an update file and clicking on 'Begin Firmware Update', a confirmation pop-up menu appears to allow the admin a chance to cancel and provide instructions on how to proceed. Always read and follow the instructions and warnings for all pop-up confirmation menus.



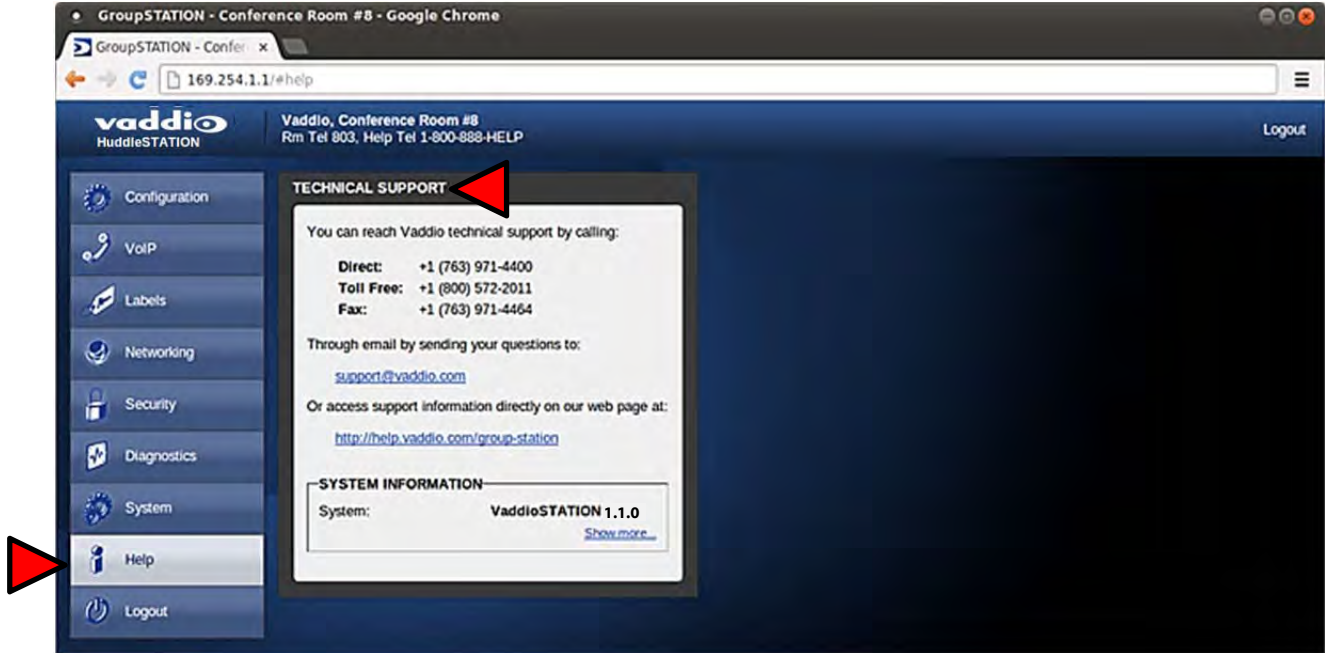
Screen Shot: System Firmware Update in Progress

After confirming the update, a progress pop-up menu will advise the admin of the progress of the update. Please do not interrupt the update process.



Screen Shot: Help Menu

The Help menu provides general information about the HuddleSTATION assists the administrator in configuring and programming of the device. The Help also includes information on the current firmware release loaded on the device. Click on the support for product related documentation from the Vaddio website

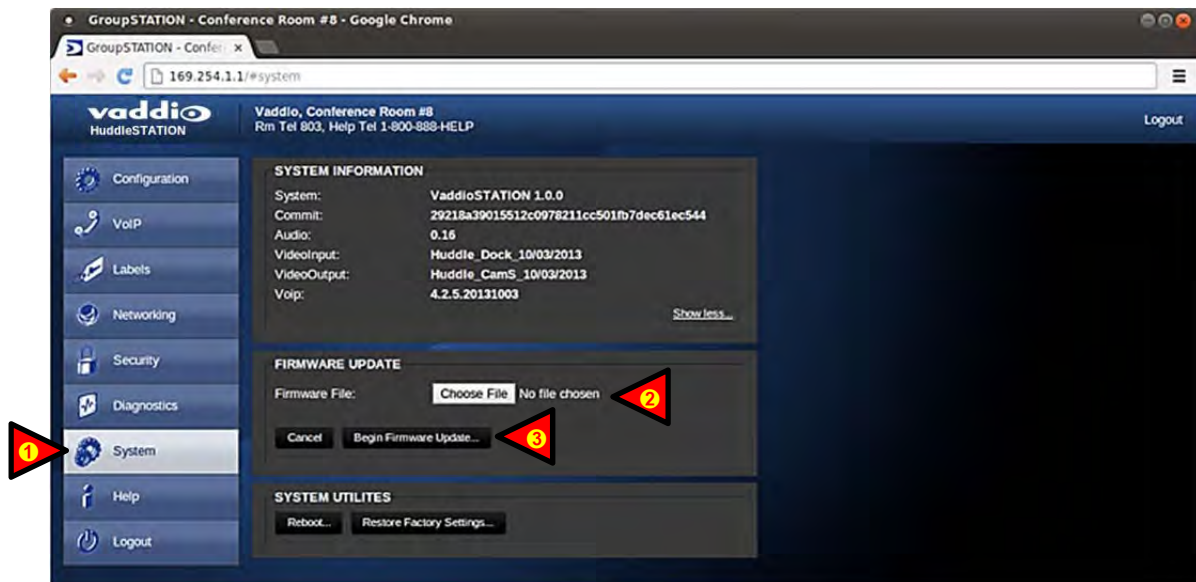


Updating the HuddleSTATION

A product as new and evolutionary as the GroupSTATION and HuddleSTATION, there will be occasions that new software updates are available. These updates will no doubt contain new features, added functionality, changes, and general tweaks to make good ideas better, and of course, bug fixes. In an effort to make the updates as painless as possible, these directions are provided. Remember, it is always a “better than good idea” to involve the IT guys to upgrade any device, especially UC devices like the Group, Huddle and Base STATIONS.

Updating Instructions:

- 1) Download the HuddleSTATION software file (image) from the Vaddio Tech Center website located at <http://www.vaddio.com/tech-center.php>. Do not UNZIP this file. Save the file to a local drive.
- 2) Log-on to the HuddleSTATION administrator web pages. Default username is “admin” and default password is “password” (unless changed by the administrator).
- 3) Navigate to the Systems tab within the web pages. Press the “Choose File” button and navigate to the HuddleSTATION firmware image stored in step 1. Once selected, choose “Begin Firmware Update”.



- 4) After clicking on “Begin Firmware Update...” a confirmation pop-up and warning will be displayed. Please read and completely understand the pop-up warnings as it is easy to lose patience waiting for updates. Please read the warnings regarding the interruption of power below.

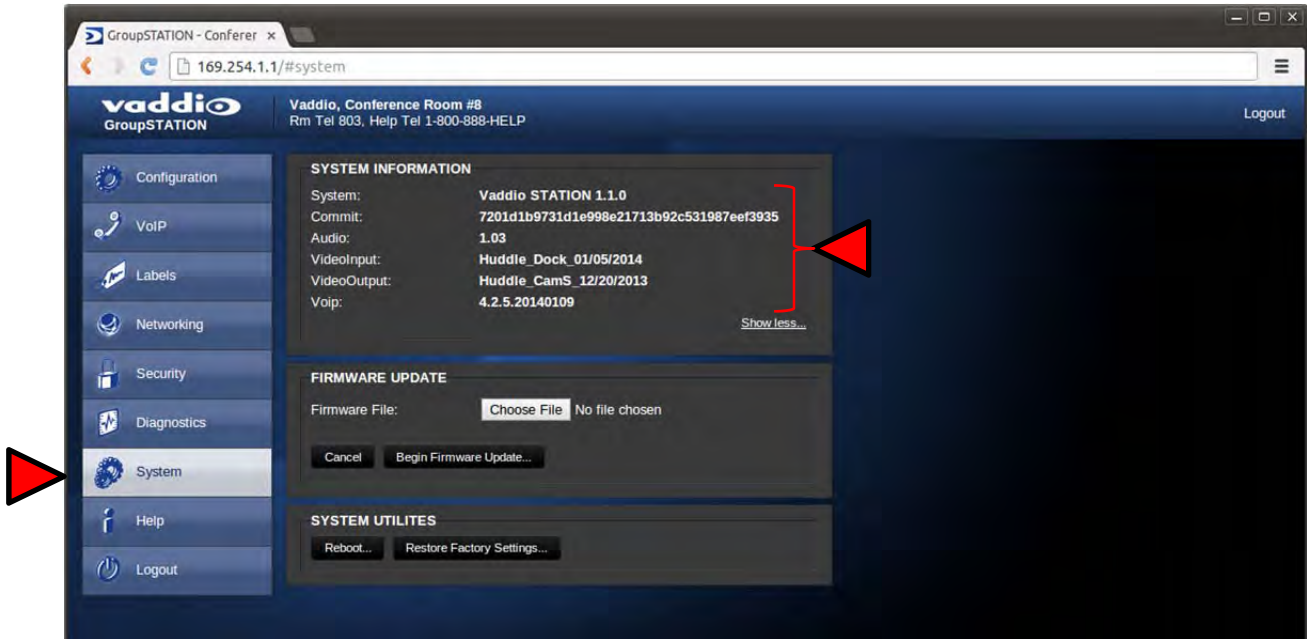


Note: The HuddleSTATION will not be operational once the firmware update begins. Any end-users in the room will be notified with the On-Screen Display that a firmware update is in process.

- 5) An update can take up to 20 minutes, the pop-up message window will identify the progress of the update and when it is completed. After the update is complete, the new version can be verified on the Help Menu tab. The version is displayed under System Information.







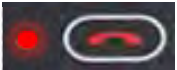


- 6) After the update has been completed a reboot will not be needed. Go to the System Information menu will display the new versions of Audio, Video In, Video Out, VoIP and the overall System Revision.



HuddleSTATION User Operations

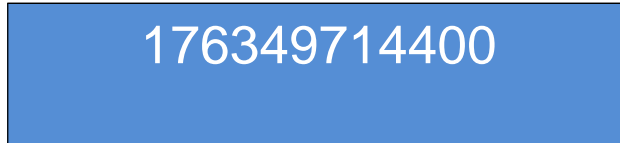
The primary user interface for the HuddleSTATION is the dial pad interface on the MicDock in combination with visual feedback from an On-Screen-Display (OSD) associated with the HDMI output that connects to the room's monitor. The dial pad is a capacitive touch interface and includes an audible tone when pressed. A description of the button functions are contained in the table below.

| Button | Function | Operations |
|---|--|---|
|  | Power ON/OFF (Dual Function Button) | This button powers the unit from Standby to a normal ON state. A green LED indication that the HuddleSTATION is ready. No LED indicates the unit is in Standby Mode. To enter Standby Mode push and hold the Power button for 3.0 seconds. Standby Mode is indicated on the OSD. |
|  | Mute | This button represents a global Mute of all microphones within the HuddleSTATION. The four red LEDs will illuminate when the microphones are muted. |
|  | Volume Up and Down | The Volume up and down buttons allows the user to increase or decrease the system's loudspeaker audio level. Eight LEDs indicate the current level of the loudspeaker volume. |
|  | Video Input Source Selection Buttons | These buttons are used if multiple video sources are connected to the unit and allow either camera input source. The HDMI or the VGA PC inputs are routed to the room's monitor and to the far-end. |
|  | PIP On/Off | This button toggles the PIP on and Off. For UC applications, the PIP window will show the cameras image over the top of the PC image (in the HDMI or VGA Input). This composited image is sent to the Far-end of the conference. |
|  | Answer/Send (Multi-purpose Button) | This button is dual purpose and associated with the VoIP functions. Answer Function: This button is used to answer inbound calls. The LED will start flashing when in-bound call is detected. This also includes audible ringing out the loudspeakers. Send Function: This button is also used for dialing operations. User enters desired number to be dialed. The OSD will display the number to be dialed. Once number is entered, user presses button to Send to establish the call. IP & MAC Address: To display the IP and MAC addresses on the OSD, press and hold this button for 3.0seconds. The IP and MAC addresses will be displayed for 10 seconds and the VoIP IP address and Proxy Status are shown for 10 more seconds. |
|  | Hang-Up (Dual-Purpose Button) | This button disconnects a VoIP call. The Red LED flashes once to indicate the call was terminated. For a Factory Reset , push and hold the Hang-up button for 5.0 seconds. The system will provide a prompt on the monitor (Press 5). When the prompt is answered the system will reset. |

Making a VoIP Call

Once the HuddleSTATION is registered to the VoIP PBX/SIP Proxy by the network administrator or other qualified IT or phone system personnel, the HuddleSTATION functions surprisingly like a typical telephone set.

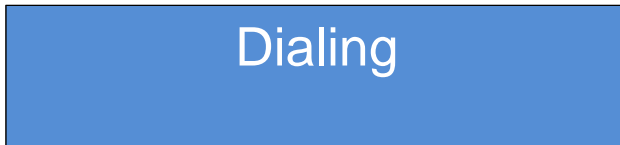
Step 1: Dial the desired number using the MicDock User Interface. The OSD will automatically pop-up on the room's LCD, at the top of the image, showing the number being dialed.



If the number is incorrect, pressing the Hang-up Button will clear the number allowing re-entry.



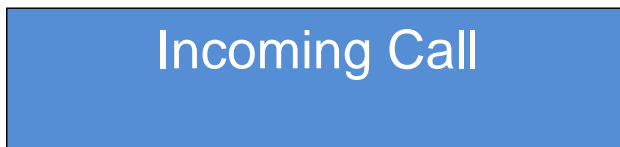
Step 2: Once the desired number is entered. Press the Send button. The OSD will indicate that a call is trying to be established to the other party.



The OSD will display additional messages about the status of the call which includes Busy, Connected, or Error.

Accepting a VoIP Call

Audible and visual indicators will be present with an inbound call. A ringtone will be heard from the loudspeakers. In addition, the OSD will display a message that an inbound call is pending.



Call Acceptance:

To accept a call the User presses the answer key.



Call Rejection:

The hang-up button can be pressed to reject the call.

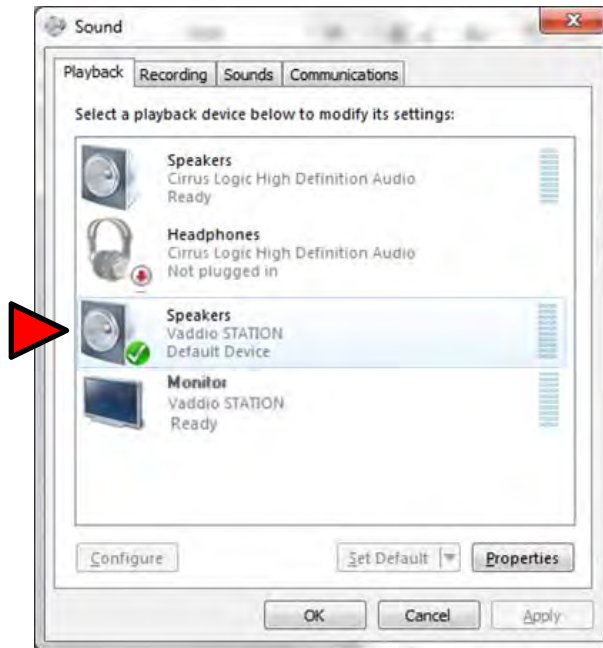


Connecting to a PC's Audio

The MicDock can be connected to the PC to extend media functions to the HuddleSTATION. This includes extending the Audio Playback and Record associated with the PC to the HuddleSTATION via USB. This is accomplished by selecting the Vaddio STATION as the USB Playback and Record device in Windows Sound Properties or from within the soft client (Lync, WebEx, Skype, etc.). Go to the control panel/sound/playback and select Vaddio STATION as the default Playback device.

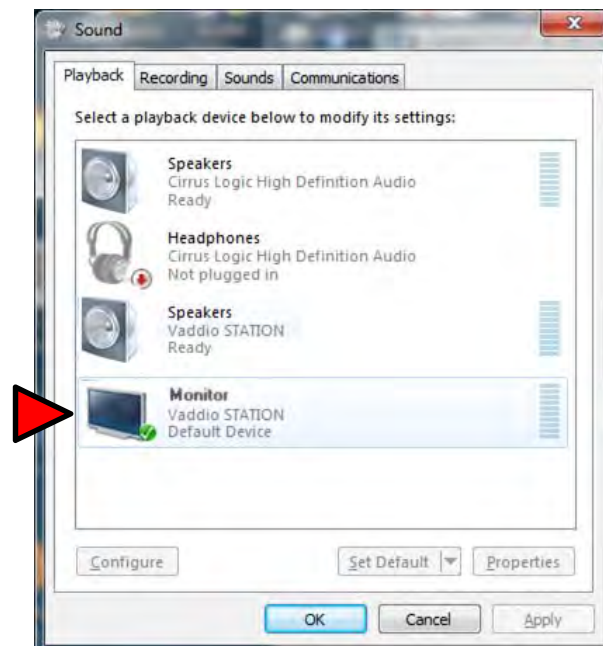
Image: Screen Shot Vaddio STATION Selected for Playback

NOTE: On the playback and recording tabs, the product is referred to as the 'Vaddio STATION'. This is primarily due to the products that will be introduced in 2014 that will use the same fundamental software (i.e. BaseSTATION etc...).



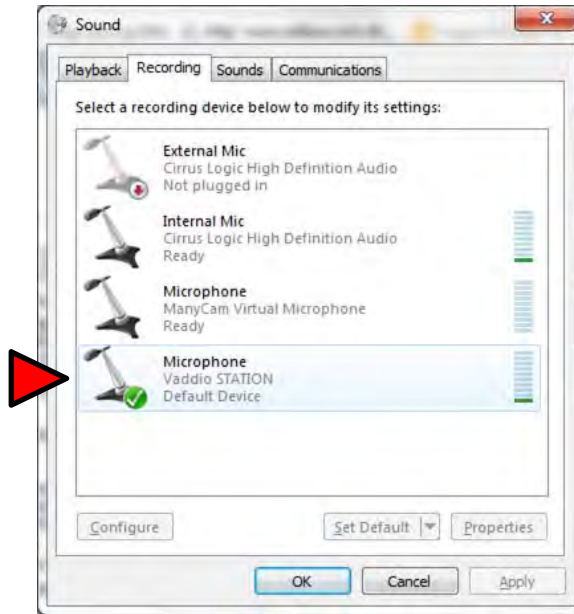
The HDMI audio will be depicted as a Vaddio STATION Monitor within the sound configuration. The sound will still be processed in the same way as the selection of the speaker.

Image: Screen Shot Vaddio HDMI Monitor Selected for Playback



Select HuddleSTATION as the recording or microphone device within sound panel since the mics in the MicDock are needed for any/all conferencing or recording applications.

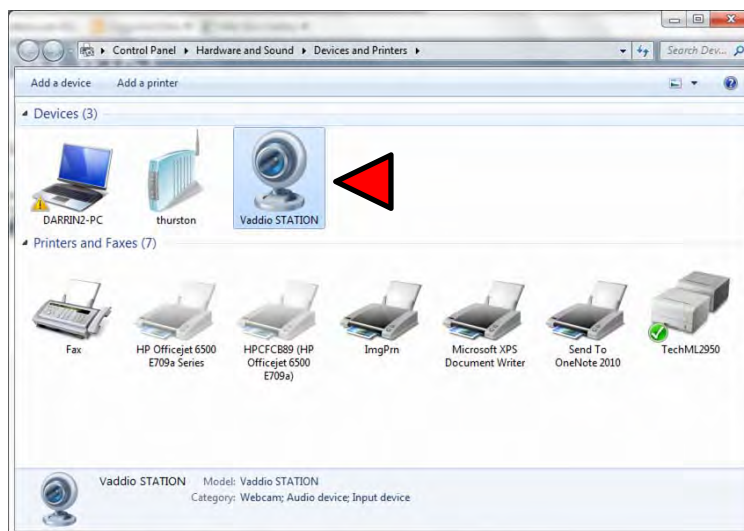
Image: Screen Shot Vaddio STATION Selected for recording



Certified Important Note: The HuddleSTATION (Vaddio STATION) must be selected as both the Playback (speaker) and Record (microphone) device within Windows or Soft Client for proper Hands-free audio operations.

Selecting HuddleSTATION as PC Camera

The HuddleSTATION emulates an USB Web Camera to the PC. VaddioSTATION (below) must be selected as the source with any software application. Once connected to the PC via USB, it will be depicted as a camera within the device page within Windows. Alternatively, it will show up as an available source, UVC camera, to any of the soft clients (Lync, WebEx, Skype, etc...).



Extending PC Display to Room's Display

The local PC's display can be extended to the room's large format display by plugging into either the HDMI or RGBHV (VGA) port on the MicPOD Dock. This is equivalent to connecting to a room projector to share the PC's display to the room. Anything on the local PC display can be emulated to the room's display.

Compatibility

The HuddleSTATION will work with the following web browsers, soft codecs, computer operating systems and media players:

Compatibility: Web Browsers:

- 1) Internet Explorer (IE 8 and above)
- 2) Safari (Rev 4 and 5)
- 3) Safari/iOS (Rev 4 and 5)
- 4) Chrome (the latest and current release - auto updating)
- 5) Firefox (the latest and current release - auto updating)

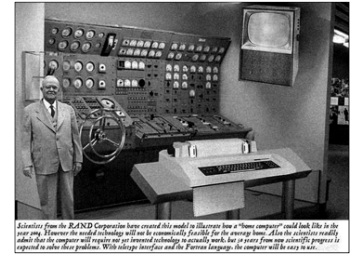


Illustration from the IBM Corporation has revealed the world's first "video computer" and took this to the next step. However the world's leading will not be commercially feasible for the average home. As in the industry really believe that the computer will require our advanced technology to greatly reduce the cost of the computer program is required to solve these problems. With video interface and the Future language, the computer will be easy to use.

Soft Clients Compatibility:

HuddleSTATION is compatible with the following soft codecs or applications, in no particular order.

| UC Program | Operation System | Notes |
|----------------------|--------------------------|-----------------------|
| Skype | Win 7 & Mac OS 10.7 | Mac OS 10.9.x |
| Web Ex | Win 7 & Mac OS X | (WBS 28.7 and up) |
| Microsoft Lync | Win 7 | - |
| Vidyo Desktop | Win 7 & Mac OS X | - |
| Google Plus | Win 7 | - |
| Adobe Connect 8 | Win 7 & Mac OS X | - |
| LifeSize ClearSea | Win 7 | - |
| GoToMeeting (Citrix) | Win 7 & Mac OS X | - |
| Polycm M100 | Win 7 | - |
| Panaopto | Win 7, (lecture capture) | Lecture Capture |
| Zoom | Win 7, Mac OS X | Service Based Program |

Compatibility: Media Players

The UVC with MJPEG video are compatible with the industry leading PC media players.

- Quick-Time 10.2
- VLC Media Player 2.1.0
- Real Player 16.0

Compatibility: Operating Systems

- Apple OS X (10.9.x)
- Windows XP w/Service Pack 3 with known issues and errata
- Windows 7
- Linux

Evolving Compatibilities

As more UC soft-client and lecture capture programs are released and gain popularity, Vaddio will provide a continuing research and development effort to ensure the compatibility with other manufacturer's products.

USB 2.0 MJPEG Resolutions

The USB 2.0 UVC (Universal Video Class) video driver resolution table is an internal list of resolutions available for the Host PC and the HuddleSTATION to negotiate and use for any specific application. Typically, the highest resolution possible between both the PC and HuddleSTATION is used. However, not all OS and application combinations are typical. Some applications are assigned to a lower value, or the lowest resolution to purposely minimize the bandwidth requirement. In order to avoid selection of the smallest resolution possible, the resolutions of 160 x 120 and 160 x 90 were removed because it looked sort of wicked awful (in some respects).

Table: Supported Resolutions

| Format | Resolution | Frame Rate | Aspect Ratio |
|------------------------------------|------------|------------|--------------|
| MJPEG Motion JPEG | 1280 x 720 | 15/30 | 16:9 |
| | 960 x 544 | 15/30 | 16:9 |
| | 704 x 576 | 15/30 | 4:3 |
| | 640 x 480 | 15/30 | 4:3 |
| | 640 x 360 | 15/30 | 16:9 |
| | 424 x 240 | 15/30 | 4:3 |
| | 352 x 240 | 15/30 | 4:3 |
| | 320 x 240 | 15/30 | 4:3 |
| | 320 x 180 | 15/30 | 16:9 |

Warranty Information (See Vaddio Warranty, Service and Return Policies posted on vaddio.com for complete details):

Hardware* Warranty: Two (2) year limited warranty on all parts and labor for Vaddio manufactured products. Vaddio warrants its manufactured products against defects in materials and workmanship for a period of two years from the day of purchase, to the original purchaser, if Vaddio receives notice of such defects during the warranty. Vaddio, at its option, will repair or replace products that prove to be defective. Vaddio manufactures its hardware products from parts and components that are new or equivalent to new in accordance with industry standard practices.

Exclusions: The above warranty shall not apply to defects resulting from improper or inadequate maintenance by the customer, customers applied software or interfacing, unauthorized modifications or misuse, mishandling, operation outside the normal environmental specifications for the product, use of the incorrect power supply, modified power supply or improper site operation and maintenance. OEM products and products manufactured by other companies are excluded and are covered by the manufacturer's warranty.

Vaddio Customer Service: Vaddio will test, repair, or replace the product or products without charge if the unit is under warranty. If the product is out of warranty, Vaddio will test then repair the product or products. The cost of parts and labor charge will be estimated by a technician and confirmed by the customer prior to repair. All components must be returned for testing as a complete unit. Vaddio will not accept responsibility for shipment after it has left the premises.

Vaddio Technical Support: Vaddio technicians will determine and discuss with the customer the criteria for repair costs and/or replacement. Vaddio Technical Support can be contacted through one of the following resources: e-mail support at support@vaddio.com or online at vaddio.com.

Return Material Authorization (RMA) Number: Before returning a product for repair or replacement request an RMA from Vaddio's technical support. Provide the technician with a return phone number, e-mail address, shipping address, product serial numbers, and original purchase order number. Describe the reason for repairs or returns as well as the date of purchase. See the General RMA Terms and Procedures section for more information. RMA's are valid for 30 days and will be issued to Vaddio dealers only. End users must return products through Vaddio dealers. Include the assigned RMA number in all correspondence with Vaddio. Write the assigned RMA number clearly on the shipping label of the box when returning the product. All products returned for credit are subject to a restocking charge without exception.

Voided Warranty: The warranty does not apply if the original serial number has been removed or if the product has been disassembled or damaged through misuse, accident, modifications, use of incorrect power supply, use of a modified power supply or unauthorized repair.

Shipping and Handling: Vaddio will not pay for inbound shipping transportation or insurance charges or accept any responsibility for laws and ordinances from inbound transit. Vaddio will pay for outbound shipping, transportation, and insurance charges for all items under warranty but will not assume responsibility for loss and/or damage by the outbound freight carrier. If the return shipment appears damaged, retain the original boxes and packing material for inspection by the carrier. *Contact your carrier immediately.*

Products not under Warranty: Payment arrangements are required before outbound shipment for all out of warranty products.

*Vaddio manufactures its hardware products from parts and components that are new or equivalent to new in accordance with industry standard practices.

Other General Information:

Care and Cleaning

Do not attempt to take this product apart at any time. There are no user-serviceable components inside.

- Do not spill liquids in the product
- Keep this device away from food and liquid, especially caviar.
- For smears or smudges on the product, wipe with a clean, soft cloth
- Use a lens cleaner on the lens
- Do not use any abrasive chemicals.

Operating and Storage Conditions:

Do not store or operate the device under the following conditions:

- Temperatures above 40°C (104°F) or temperatures below 0°C (32°F)
- High humidity, condensing or wet environments
- In swimming pools or monkey cages at the zoo
- In inclement weather
- Dry environments with an excess of static discharge
- In a rotary, non-contacting evaporator (steam condenser type)
- Under severe vibration

HuddleSTATION Compliance and CE Declaration of Conformity



Compliance testing was performed to the following regulations:

FCC 47 CFR Part 15, Subpart B/Oct. 2009

ICES-003, Issue 4: 2004

EN-55011:2007 + A2: 2007

EN 55022:2006 + A1: 2007

CISPR 22:1997

IEC 60950-1:2005 (Second Edition); Am 1:2009

EN 60950-1:2006+A11:2009+A1:2010+A12:2011

EMC Directive 2004/108/EC

Class A

Class A

Class A

Class A

Class A

Safety

Safety

Class A



FCC Part 15 Compliance

This equipment has been tested and found to comply with the limits for a Class A digital device, pursuant to Part 15 of the FCC Rules. These limits are designed to provide reasonable protection against harmful interference when the equipment is operated in a commercial environment. This equipment generates, uses, and can radiate radio frequency energy and, if not installed and used in accordance with the instruction manual, may cause harmful interference to radio communications. Operation of this equipment in a residential area is likely to cause harmful interference in which case the user will be required to correct the interference at his/her own expense.

Operation is subject to the following two conditions: (1) This device may not cause interference, and (2) This device must accept any interference including interference that may cause undesired operation of the device.

Changes or modifications not expressly approved by Vaddio can affect emission compliance and could void the user's authority to operate this equipment.



ICES-003 Compliance

This digital apparatus does not exceed the Class A limits for radio noise emissions from digital apparatus set out in the Radio Interference Regulations of the Canadian Department of Communications.

Le présent appareil numérique n'émet pas de bruits radioélectriques dépassant les limites applicables aux appareils numériques de la classe A prescrites dans le Règlement sur le brouillage radioélectrique édicté par le ministère des Communications du Canada.



European Compliance

This product has been evaluated for Electromagnetic Compatibility under the standards for Emissions and Immunity and meets the requirements for E4 environment. This product complies with Class A (E4 environment). In a domestic environment this product may cause radio interference in which case the user may be required to take adequate measures.

Standard(s) To Which Conformity Is Declared:

EN-55011:2007 + A2:2007

EN 55022:2006 + A1:2007

EN 61000-6-4:2007

EN 61000-3-2:2006

EN 61000-3-3:2008

EN 61000-6-2:2005

EN 55024:1998 + Amendments A1:2001 + A2: 2003

EN 61000-4-2:2008

EN 61000-4-3:2008

EN 61000-4-4:2004 + Corrigendum 1:2006 + Corr. 2:2007

EN 61000-4-5:2005

EN 61000-4-6:2008

EN 61000-4-8:2009

EN 61000-4-11: Second Edition: 2004

IEC 60950-1:2005 (Second Edition); Am 1:2009

EN 60950-1:2006+A11:2009+A1:2010+A12:2011

Emissions

Conducted and Radiated Emissions

Electromagnetic Compatibility

Limits for Harmonic Content

Limits for Voltage Fluctuations and Flicker

Immunity for Industrial Environments

Immunity

Electrostatic Discharge

Radiated Immunity

Electrical Fast Transients

Surge Immunity

Conducted Immunity

Power Frequency Magnetic Field

Voltage Dips, Interrupts and Fluctuations

Safety

Safety

General Specifications

| HuddleSTATION | |
|--|---|
| Part Numbers | <ul style="list-style-type: none"> HuddleSTATION Base System: 999-8910-000 North America, 999-8910-001 Int'l HuddleSTATION Deluxe System: 999-8914-000 North America, 999-8914-000 Int'l (with wall mount) HuddleSTATION Premier System: 999-8915-000 North America, 999-8915-000 Int'l (with wall mount and 4x4 PC Interface cable) |
| Loudspeaker | Pair of 2-Way Speakers and 2x25 Watt Class-D Amplifier |
| WideSHOT Type Cam | 1/3-Type Progressive Scan CMOS Sensor with 1.3 Megapixels 3X Optical Varifocal Zoom, 3.3mm-10.mm, Manual Zoom, Focus and Iris 82.2° Wide End to 3.2° Tele End, 27.4° Zoomed-all-in, 16:9 Format (94.3°Diagonal - if someone would really want to look at camera specs like that...) Manual Pan/Tilt/Zoom |
| VoIP | SIP User Agent |
| Video Output | HDMI video output |
| Video Processing | Input switching, On-screen Display, Picture-in-Picture |
| User Controls | MicDock and Internal Web server |
| Connectors | Network (RJ-45), HDMI (output), Dock LINK (Shielded RJ-45), Power (5.5mm x 2.5mm coax) |
| MicDock | |
| User Controls | Dialing, Mute & Volume, Zoom, PIP, Video Select, Power On/Off with on screen display of user controls |
| Microphones | 4- Cardioid Condenser, Low Noise Microphone Elements (arranged in 360Degree pattern) |
| Audio Processing | Acoustical Echo Cancellation, Automatic Gain Control, Noise Reduction, Automatic Microphone Mixing, HP/LP Filters |
| Video Input | HDMI: 1080p/60/59.94/50/30/25 frames/s, 720p/60/59.94/50 frames/s, 1080i/59.94/50 fields/sec, 1080i/60 DVI (on HDMI w sRGB color space): 1080p/60/59.94/50/frames/s, 720p/60/59.94/50Hz frames/s, 1080i/59.94/50Hz, fields/sec, 1440 x 900@60Hz, 1360 x 768@60Hz, 1280 x 800@60 Hz, 1280 x 768@60Hz, 1280 x 720@60Hz, 1152 x 720@60Hz, 1024 x 768@60Hz RGBHV: 1280 x 720@60Hz (16:9), 1280x768@60Hz (15:9)m, 1280x800@60Hz (16:10), 1360 x 768@60Hz (16:9), 1024 x 768@60Hz (4:3 centered in 16:9 frame) |
| Connectors | USB (micro-B), Network (RJ-45), HDMI (Input), DE-15 (VGA Input), Dock LINK (Shielded RJ-45) |
| General Information | |
| Cat-6 SSTP Cable | 26AWG stranded, individually shielded pairs with overall shield, gold contacts and metal shielded RJ-45 Printed on Jacket: Cat-6 26 AWG x 4pr SSTP IEC 60332.1, Conforms to ISO/IEC 11801 & EN 50288, ANSI & TIA/EIA-568-C.2 3P/ETL Verified CMX (UL) C(UL) CMH E193793 Please do not substitute this cable. Use ONLY the provided 25' (7.62m) or the Accessory 50' (15.42m) Cat-6 SSTP. These cables are tested and approved. |
| Operating Temperature | 32° to 104° F (0° to 40° C) / 20% to 80% Relative Humidity |
| Audio Specification | Frequency Response: 20 HZ to 20KHZ, Dynamic Range: >90dB, THD + Noise: <.02% |
| Camera Specification | Aptina 1/3-type Sensor with manual, real glass 3mm-10.5mm Varifocal (~3X) optical zoom lens producing 82.2° horizontal field of view on the wide end and 27.4° on the tele end in a 16:9 format. |
| USB Specifications | USB 2.0-UVC and UAC compliant, Video: Up to 720p/30 MJPEG, Audio: Stereo PCM at 48KHZ, 16 bit |
| Dock LINK Interface | Proprietary high speed digital interface with Video, Audio, Control, Network, and Power. Cat-6 SSTP cable with individually shielded pairs. 25' (7.62m) included with every system. 50' (15.24m) Cat-6 SSTP cable with individually shielded pairs sold separately. |
| Power Consumption | <72 Watts |
| Power Supply | 24 VDC, 3.0 Amps |
| Dimensions (H x W x D) | HuddleSTATION Camera/Sound Bar : 6.125" (155.58mm) H x 46.12" (1.17m) W x 5.655" (143.64mm) D HuddleSTATION MicPOD Dock: 1.699" (43.17mm) H x 9.25" (234.95mm) Diameter (round) Opt. Premium Wall Mount: 6.095" (154.81mm) H x 39.8" (1.01m) W x 2..272" (57.71mm) D (depth of cable tray) |
| Weight | HuddleSTATION: Approximately 19.65 lbs. (8.9130901 kg), MicDock: Approx. 1.67 lbs. (0.75749926 kg) Optional Premium Wall Mount: 3.55 lbs. (1.6102529 kg) |
| Accessories | Premium Wall Mounting Kit with Integrated Cable Tray (999-8901-000) 4x4 PC Interface Cable for MicDock (999-8902-000) 50' Shielded Cat-6 SSTP with Individually Shielded Pairs (999-8903-000) |
| Network Requirements | |
| IP Addresses | For each HuddleSTATION, three (3) IP addresses are required; <ul style="list-style-type: none"> One (1) for the HuddleSTATION conferencing and set-up web pages One (1) for HuddleSTATION VoIP One (1) for the room PC with the UC application |
| Default IP Address and Ports Used | Huddle STATION Default IP: 169.254.1.1 & Subnet Mask: 255.255.0.0 HuddleSTATION VoIP: Port 5060, Typical Browsers: Port 80 RTP Settings Default Port Range: 23456 to 23556 (100 ports) for audio transports |

Appendix A: Network Information Required

The intent of this appendix is to assist both A/V system integrators and IT managers preparing for the installation of the HuddleSTATION conferencing platform into the enterprise IP and VoIP network.

For the HuddleSTATION and room PC, three (3) total IP addresses are required. The addresses are as follows:

- 1) For the HuddleSTATION for UC conferencing
- 2) For the HuddleSTATION VoIP conferencing
- 3) For the in-room PC used with the UC conferencing application.

For the first HuddleSTATION IP address (Non-VoIP):

The HuddleSTATION IP address information (for non-VoIP) is entered under the **Networking Menu** tab. The following items will need to be entered:

- 1) **Hostname:** _____. The Hostname is a label used for identification of the Group/HuddleSTATION UC conferencing device connected to the network.
- 2) **Network Type;** DHCP or Static. If DHCP, then the address information should auto-fill
- 3) If **Static**, then the following information is needed (the MAC address is provided).
 IP Address: _____
 Subnet Mask: _____
 Gateway: _____

For the 2nd HuddleSTATION IP Address (VoIP):

The HuddleSTATION IP address information for VoIP is entered under the **VoIP Menu** tab. The following items will need to be entered:

- 1) **Hostname:** _____. The Hostname is a label used for identification of the Group/HuddleSTATION VoIP conferencing device connected to the VoIP network.
- 2) **Network Type;** DHCP or Static. If DHCP, then the address information should auto-fill
- 3) If **Static**, then the following information is needed (the MAC address is provided).
 IP Address: _____
 Subnet Mask: _____
 Gateway: _____
 DNS Server: _____
- 4) **VLAN:** The following Information is required if the Host site uses segmented VoIP and data to prioritize VoIP over data traffic on the LAN/WAN (essentially the network QoS - the car pool lane for VoIP).
 VLAN Enabled (If enabled then ID and User Priority are required)
 ID#: _____ User Priority#: _____

Under the **SIP Settings** Tab the following information must be entered under the headings SIP Authentication, SIP Outbound Proxy and Session Timers:

• SIP AUTHENTICATION

User Name/Extension (User Name/Extension is used by the SIP Server to route calls): _____

Password (Password authentication to the SIP server): _____

Display Name (Acts as caller ID for the call destination): _____

User Domain (SIP IP address or Domain Name): _____

Local SIP Port (Default Port is 5060): _____

• SIP OUTBOUND PROXY

Proxy/URL Address (Address for SIP Outbound Proxy Server): _____

Proxy Port (Default Port is 5060): _____

• SESSION TIMERS

Registration Lifetime (Default is 3600 sec): _____

Keep Alive Timer (Click to Enable - Enter Timer Value - Default is 30 sec): _____

Under the **RTP Settings** Tab the RTP Port Range, the Codec Priority and the Audio Processing parameters are defined. The following information is required for the RTP Settings tab:

- **RTP SETTINGS**

Port Range: _____ (Sets RTP port range used for audio transports)

- **CODEC PRIORITY**

G.722 HD - Wideband G.711 μ Law G.711aLaw _____ (The first in the list will be used for call negotiation)

- **AUDIO PROCESSING**

DTMF Relay: _____ (For using DTMF in band - Click to Enable)

DTMF ON Time: _____ (Default 150ms 0 - Sets DTMF timing)

DTMF OFF Time: _____ (Default 50ms - Sets DTMF timing)

VAD Enabled: _____ (Check to Enable - Voice Activity Detection) Used for bandwidth management.

VAD Threshold: _____ (Default -45dBu - minimum level that voice has to be in order to be detected)

Comfort Noise Enabled: _____ (Check to Enable) Synthetic background noise used to fill the artificial silence of digital

Comfort Noise Threshold: _____ (Default -63dBu)

Silence Suppression: _____ (Check to Enable - With VAD on, Silence Suppression works to reduce call bandwidth when no voice is detected)

(In most cases, the defaults should be adequate.)

For the 3rd HuddleSTATION IP Address (PC):

The 3rd and final IP Address is for the in-room PC or laptop (BYOD) that is running the chosen UC application. The courtesy network jack on the MicDock can be used by the room PC, or any other network jack in the room that is on the same network as the HuddleSTATION.



As always, it is very important from to work closely with the IT professionals at the place of installation to acquire the IP addresses, the required VoIP information and the network jack(s) required to install and operate each HuddleSTATION.

Inside Back Cover - Blank



Vaddio, Toll Free: 800-572-2011 • Phone: 763-971-4400 • FAX: 763-971-4464, vaddio.com

©2013 Vaddio-All Rights Reserved. Reproduction in whole or in part without written permission is prohibited. Specifications and pricing are subject to change without notice or obligation. Vaddio, GroupSTATION, HuddleSTATION, and MicDock are trademarks of Vaddio. All other trademarks and likenesses are property of their respective owners. Document 342-0692 Rev B