



## A4404 SAB

SIGNAL ANALYZER BOX - POCKET ANALYZER



MASTER THE LANGUAGE OF YOUR MACHINERY



# A4404 SAB

## POCKET ANALYZER



The A4404 - SAB is a pocket sized 4 channel vibration analyzer.

Connect the A4404 - SAB to any computer by USB and use the unit for data analysing, collecting and the recording of vibration signals. The instrument is enhanced by modules for dynamic balancing, measurement of run up and coast down and acoustic measurement mode. The instrument is equipped with an expert system developed by Adash, which automatically detects machinery faults.

The instrument is powered directly by USB connection so no external power is needed.



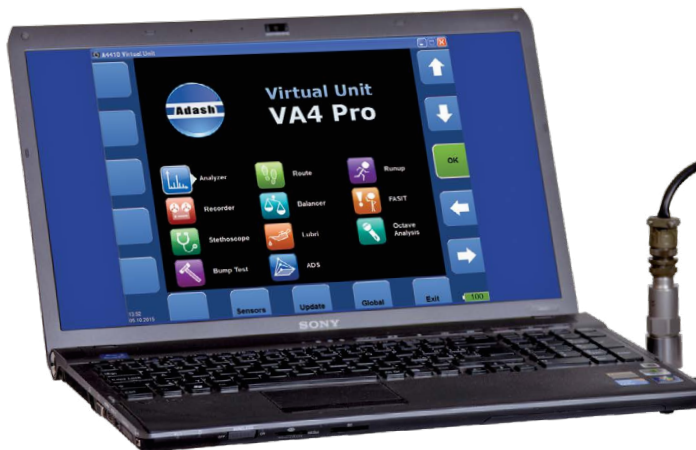
Connect A4404 SAB to your laptop and get all functions of 4 channel analyzer VA4 Pro



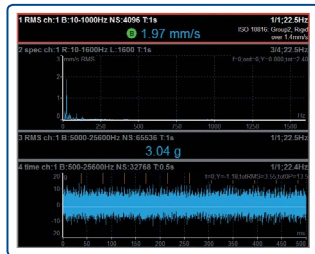
Free download of VA4 Pro - Virtual Unit software enables you to try all functions of the analyzer on your computer

VA4 PRO - VIRTUAL UNIT SOFTWARE

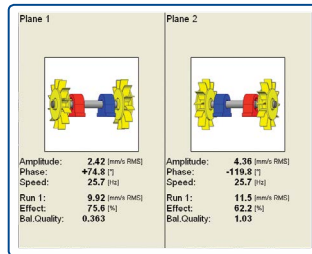
POCKET SIZE 4 CHANNEL VIBRATION ANALYZER  
Input channels: 4 AC, ICP® (ON/OFF), 4 DC, 1 TACHO



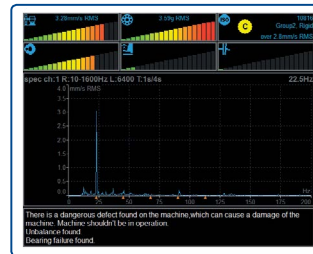
# A4404 SAB MEASUREMENT MODES



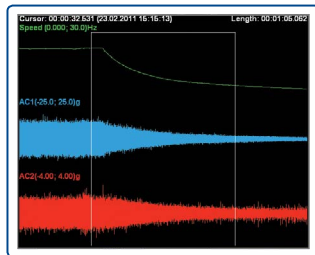
**ANALYZER**  
 › 4 channels simultaneously



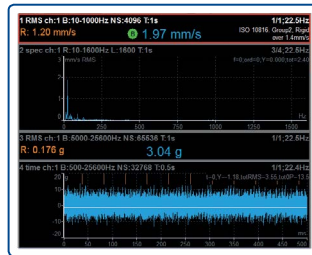
**BALANCER**  
 › Intuitive graphical balancing procedure



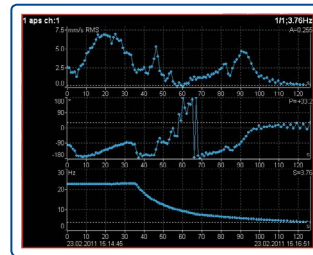
**EXPERT SYSTEM**  
 › Automatic fault detection



**RECORDER**  
 › 4 channels recording  
 › 35 hours signal recording



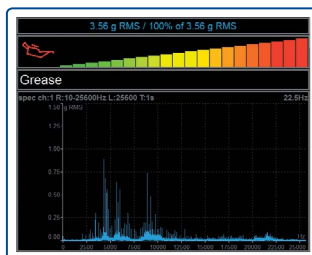
**ROUTE**  
 › 8000 measuring points  
 › DDS software



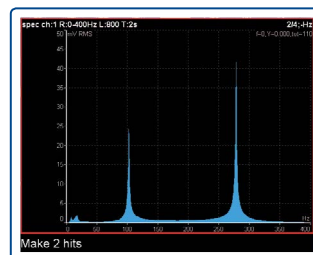
**RUN UP/COAST DOWN**



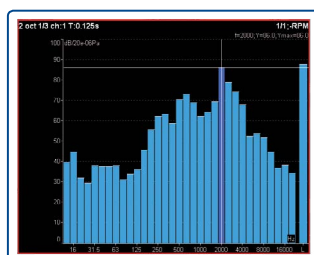
**STETHOSCOPE**  
 › Listening of vibration signal



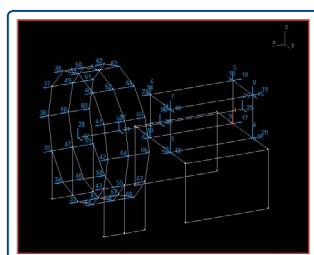
**LUBRI**  
 › Monitoring and control of lubrication process



**BUMP TEST**



**OCTAVE ANALYSIS**



**ADS**  
 › Animated deflection shapes

## A4404 SAB TECHNICAL SPECIFICATIONS:

<b>Input channels:</b>	4 AC, ICP® power supply on/off 4 DC for process values 1 TACHO for external trigger
<b>Input range:</b>	AC +/- 12 V peak-peak DC +/- 24V
<b>AD conversion:</b>	24 bit, 64 bit internal signal processing No AutoGain function!
<b>Dynamic range S/N:</b>	120 dB
<b>Frequency ranges:</b>	Maximum range: 1 Hz - 90 kHz (1 Ch, 194 kHz sampling) Maximum range: 1 Hz - 25 kHz (4 Ch, 64 kHz sampling) Minimum range: 1 Hz - 25 Hz (4 Ch, 64 Hz sampling)
<b>Sampling mode:</b>	Fully simultaneous for 4 channels
<b>FFT resolution:</b>	Min. 100 lines Max. 3 276 800 lines
<b>Unit modes:</b>	Analyzer - analytic measurement Data collector - route measurement Balancer - on-site balancing Recorder - signal recording Stethoscope FASIT - Expert system for fault detection Octave analyzer Bump test ADS - Animated Deflection Shapes
<b>Processor:</b>	According to the PC
<b>Memory, Route:</b>	According to the PC hard drive
<b>Data processing:</b>	Real time FFT DEMODO - ENVELOPE analysis ACMT - low speed bearing analysis Order analysis User band pass analysis RPM measurement DC measurement Orbit measurement
<b>Signal recorder:</b>	64 kHz sampling frequency 4 Ch memory consumption 3 GB/hour 4 Ch total recording - 35 hours
<b>Trigger:</b>	Manual, External, Signal level, Time Use for signal recording trigger Speed change, Time interval
<b>Communication:</b>	USB
<b>Temperature range:</b>	-10 °C to +50 °C
<b>Power:</b>	USB powered
<b>Case:</b>	Aluminium heavy duty
<b>Size &amp; Weight:</b>	110 x 115 x 35 mm, 350 g



## CONTACT US

Toll Free: 1-888-817-4335

Fax: 480-393-4830

[www.adashamerica.com](http://www.adashamerica.com)

[info@adashamerica.com](mailto:info@adashamerica.com)

MASTER THE LANGUAGE OF YOUR MACHINERY