

Installation and Assembly - I-Beam Clamps



This product must be installed by a qualified, professional installer.

IMPORTANT! Read entire instruction sheet before you start installation and assembly.

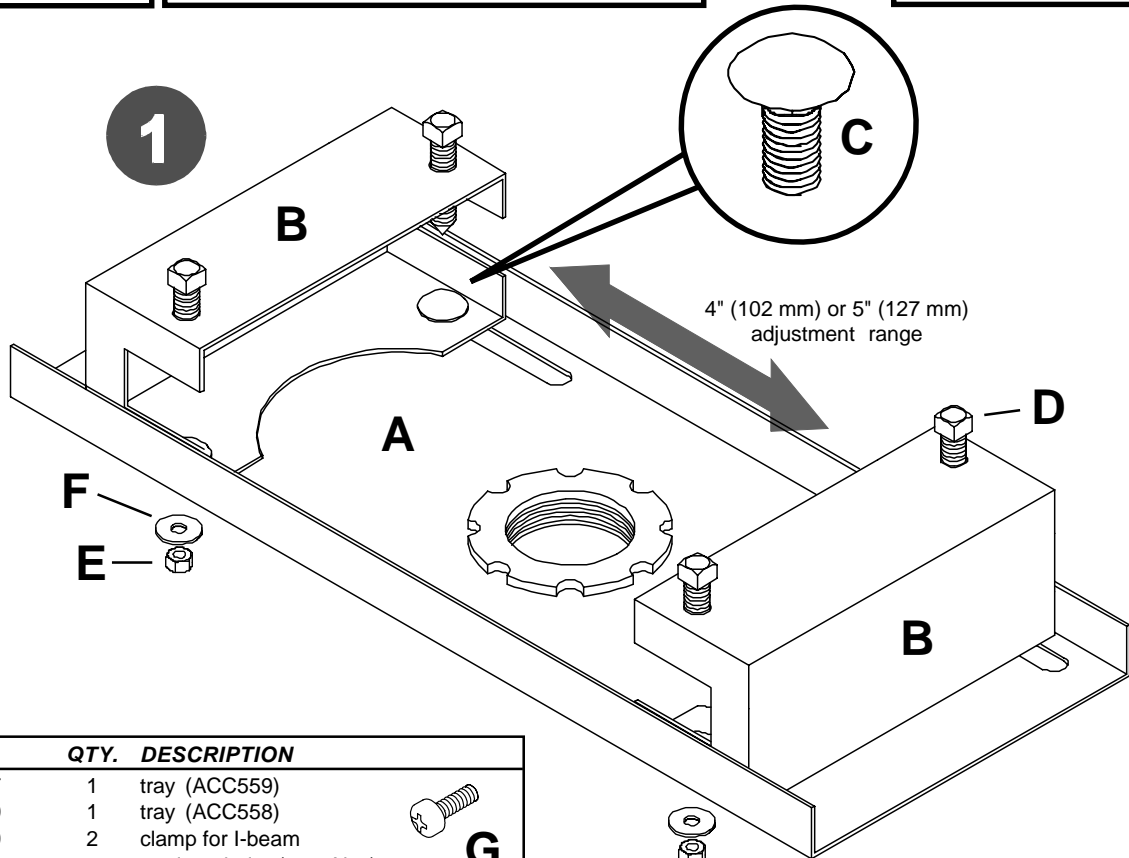
Models:
ACC558
ACC559

For customer service call 1-800-729-0307 or 708-865-8870. Visit the Peerless Web Site at www.peerlessindustries.com.

Before you start make sure all parts shown below are included with your product.

Maximum load rating 250 lbs. (113 kg) Combined weight to all attached hardware and components is not to exceed 250 lbs. (113 kg)

Peerless Industries, Inc.
3215 W. North Avenue
Melrose Park, IL 60160



Parts List	PART #	QTY.	DESCRIPTION
	A	128-1187	1 tray (ACC559)
		128-1190	1 tray (ACC558)
	B	128-1189	2 clamp for I-beam
	C	520-9215	4 carriage bolt 3/8-16 X 3/4
	D	520-2560	4 cone bolt 3/8-16 X 2
	E	530-9310	4 lock nut 3/8-16
	F	540-9454	4 flat washer 3/8 x 3/4 x 1/8
G	520-9250	2 M5 x .8 x 10mm phillips screw	

M5 screws (G) are provided to secure extension column (sold separately) to threaded fitting in tray. Refer to extension column instruction sheet for details.

Note: Some parts may appear slightly different than illustrated.

1

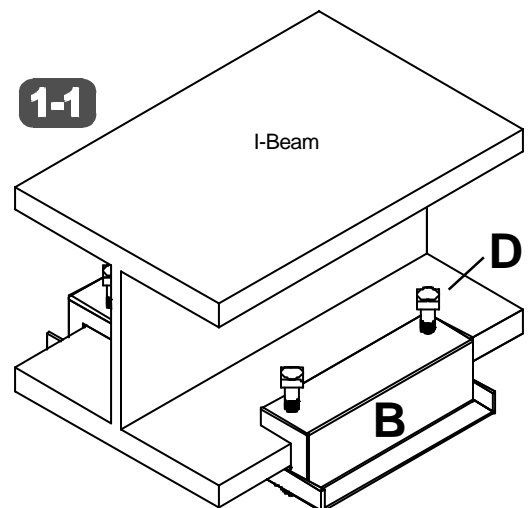
Note: For each step see corresponding illustration.

Attach clamps (B) to tray (A) using four 3/8-16 x 3/4 carriage bolts (C), washers (F), and lock nuts (E). Do not fully tighten.

Start four 3/8-16 x 2 bolts (D) into clamps (B).

1-1

Adjust clamps (B) securely around I-Beam. Tighten (C,F,E) securely. Tighten four bolts (D) securely. Attach the extension column according to the instructions provided with it. Use a level to make sure the column is plumb and make adjustments as necessary.



Touchboards

205 Westwood Ave, Long Branch, NJ 07740
Phone: 866-94 BOARDS (26273) / (732)-222-1511
Fax: (732)-222-7088 | E-mail: sales@touchboards.com