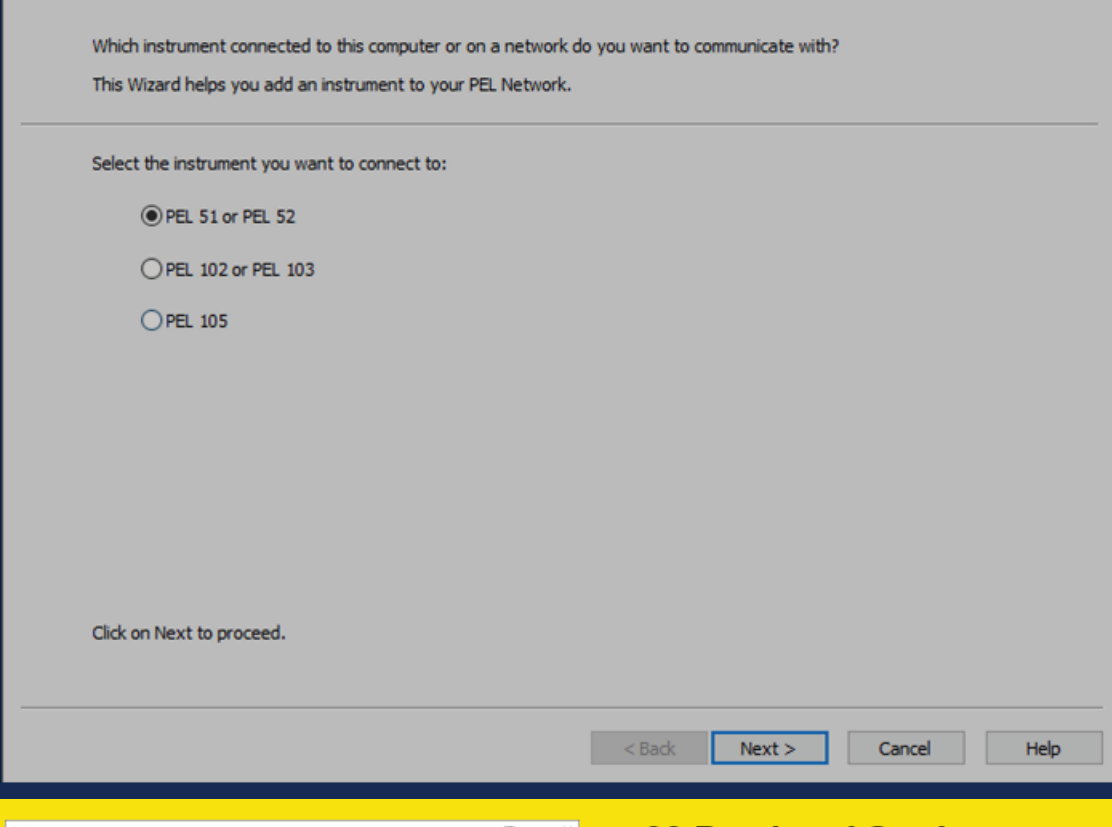


AEMC® Instruments is excited to announce:
NEW 30 Day Load Study is released for the **Power Energy Logger (PEL) Control Panel (Version 2.8.15349)** in compliance with **NEC Code 220.87**
NEW FEATURES include the following:

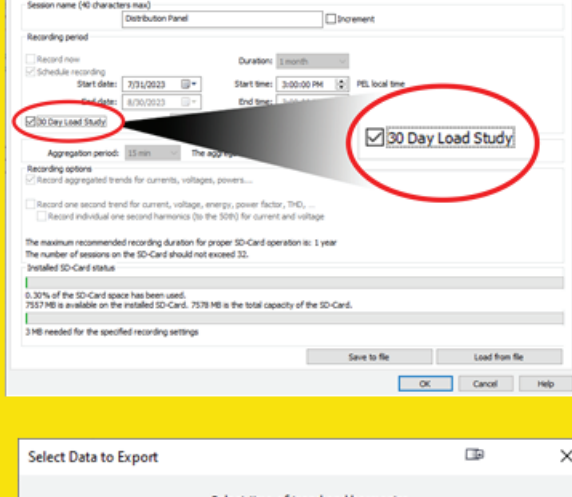
Additional Configuration Screen

Version 2.8.15349 adds a new instrument type selection screen when adding a new instrument to the PEL Control Panel. Select the appropriate PEL instrument model when prompted by this window.

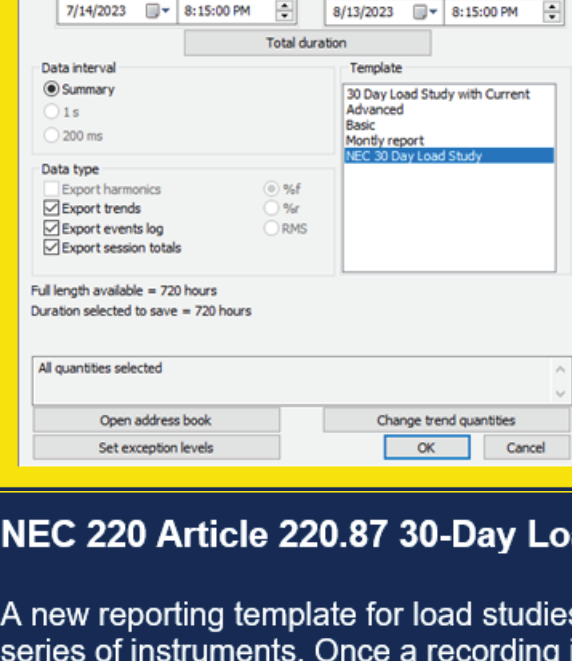


30 Day Load Study Configuration Option

A checkbox labeled: **30 Day Load Study** has been added to the recording tab of the configuration menu found inside the PEL Control Panel.

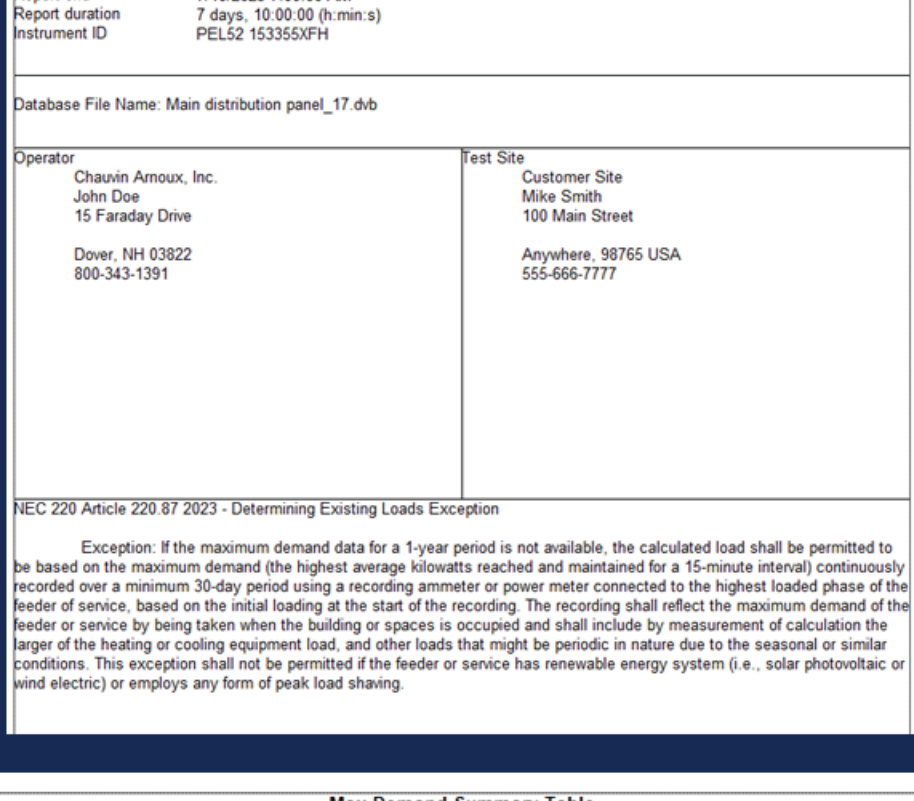


When selected, the recording will be automatically configured for a 30-day period, aggregate measurements into 15-minute periods, and recording options, including 1-second measurements and harmonics, will be inaccessible. This complies with the NEC Code 220.87



NEC 220 Article 220.87 30-Day Load Study Report Template

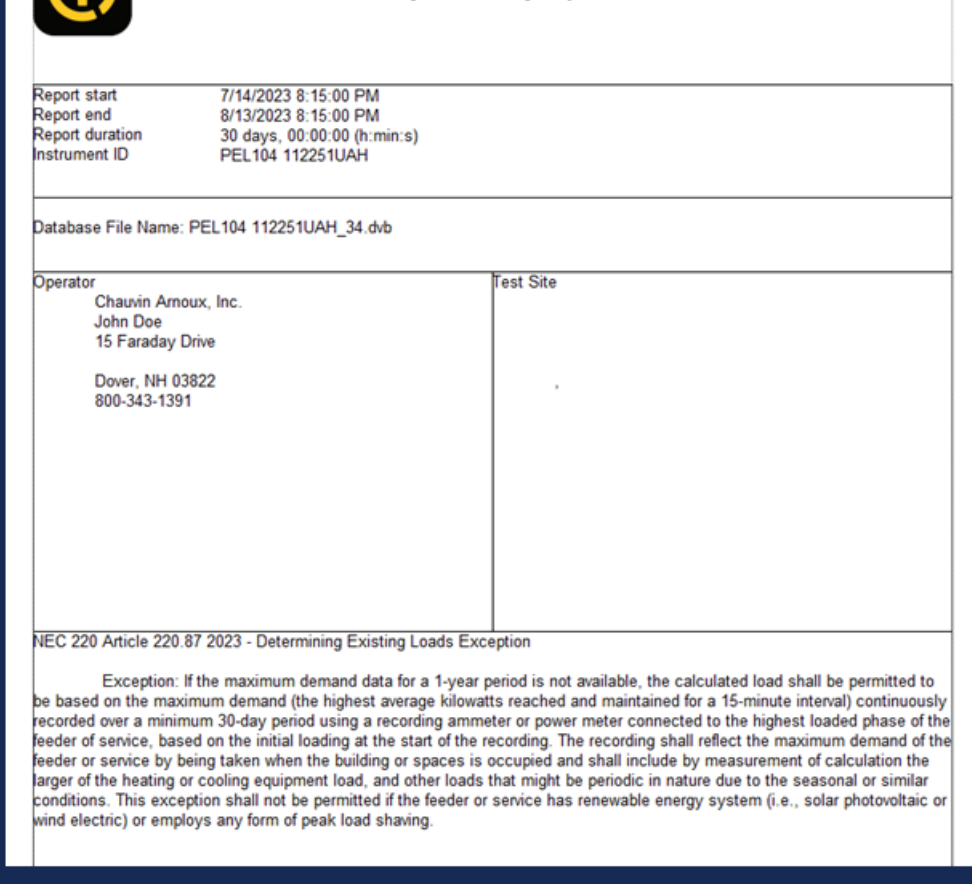
A new reporting template for load studies simplifies report creation for the PEL series of instruments. Once a recording is completed and added as a session to the Control Panel, a DataView® report can be created using the NEC 220.87 30 Day Load Study template. This report will populate peak power in kW and the max demand of the feeder or service as required by article 220.87.



Max Demand Summary Table						
Name	AVG	Units	MAX	Units	MAX date	MAX time
P1 (W) (15 min)	674.6	W	3.428k	W	7/8/2023	1:00:00 PM
P2 (W) (15 min)	807.9	W	3.767k	W	7/8/2023	2:30:00 PM
PT (W) (15 min)	1.483k	W	6.842k	W	7/8/2023	1:00:00 PM

30-Day Load Study with Current Report Template

An additional new reporting template for load studies that populates **peak power in kW** and the **max current demand** for all phases has been added to the PEL Control Panel. Once a recording is completed and added as a session to the Control Panel, a DataView® report can be created using the 30 Day Load Study template.



Max Demand Summary Table				
Power				
Name	MAX	Units	MAX date	MAX time
P1 (W) (15 min)	4.262k	W	7/30/2023	10:15:00 PM
P2 (W) (15 min)	4.661k	W	8/6/2023	11:00:00 PM
PT (W) (15 min)	8.318k	W	7/30/2023	10:15:00 PM

Current				
Name	MAX	Units	MAX date	MAX time
I1 (15 min)	36.10	A	7/30/2023	10:15:00 PM
I2 (15 min)	39.14	A	8/6/2023	11:00:00 PM
IN (15 min)	0.0	A	7/14/2023	8:30:00 PM

Additional Features:

- Support for Cloud services like OneDrive, Google Drive and DropBox for the DataView® documents folder.
- A new screen to the installer process that shows how much hard drive space is available and how much it will take to install the application.
- Now you have the ability to select the path to Download folder to store reports where you want on your PC.
- Now you can see Network L452 data in the Workstation Instrument Panel view.
- DataViewSync™ facilitates communication between the instrument and your computer to easily use DataView® to configure, analyze and generate reports. It also automates the selection of the server address and port.

Bug Fixes:

- Refer to the [DataView® Release notes](#) and [PEL Release notes](#) for a full list of bug fixes included in this release.

Backed by over 130 years of experience

Chauvin Arnoxx®, Inc. d.b.a.
AEMC® Instruments
(800) 343-1391
marketing@aemc.com

