

# DATA LOGGERS

## SIMPLE LOGGER® DATA LOGGERS

### MODELS SL01 TO SL13

*Small AC and DC simple loggers can be ready to go in minutes with just a few parameters to set up*

### MODELS SL20 & SL50

*Log DC Current and Temperature*



SL01

SL11

SL13

SL50

### SPECIFICATIONS

MODELS	SL01	SL10	SL11	SL12	SL13
<b>VOLTAGE</b>					
<b>Range</b>	0 to 5 V <sub>AC</sub>	±100 mV <sub>DC</sub>	±1 V <sub>DC</sub>	±10 V <sub>DC</sub>	±50 V <sub>DC</sub>
<b>Resolution</b>	10 mV	0.1 mV	1 mV	10 mV	50 mV
<b>Accuracy</b>	±(0.5% of Reading + 50 mV)*	±(0.5% of Reading + 0.5 mV)*	±(0.5% of Reading + 5 mV)*	±(0.5% of Reading + 50 mV)*	±(0.5% of Reading + 250 mV)*
<b>Maximum Input Voltage</b>	60 V <sub>DC</sub>				
<b>Input Impedance</b>	800 KΩ				
<b>Power Source</b>	Internal: Two 1.5 V AA non-rechargeable batteries External: USB 2.0 (computer or other USB power source)				
<b>Power Consumption</b>	Internal power: 1 mA (average) / External power: 100 mW				

\*Accuracy is specified with the 10-point filter selected to reduce noise.



### FEATURES

- Simple one button operation
- Quick two wire input connection
- User configurable scaling, units of measure and recording length
- Stores up to 4 million measurements
- Data analysis software included
- Software provides real-time trend graph display, data download, analysis and report generation
- Micro-B USB cable included

### SPECIFICATIONS

MODELS	SL20	SL50						
		Thermocouple Type:						
		J	K	N	T	E	R	S
	<b>CURRENT</b>	<b>TEMPERATURE</b>						
<b>Range</b>	±20 mA	-346 to 2192°F (-210 to 1200°C)	-328 to 2502°F (-200 to 1372°C)	-328 to 2372°F (-200 to 1300°C)	-328 to 752°F (-200 to 400°C)	-328 to 1832°F (-200 to 1000°C)	32 to 3200°F (0 to 1760°C)	
	0.02 mA	0.1°C						
<b>Accuracy</b>	±(0.5% of Reading + 0.1 mA)*	Below -148°F (-100°C): ±(0.4% of Reading + 9°F [5°C])*					32 to 212°F (0° to +100°C): ±(0.3% of Reading + 18°F [10°C])*	
		-148 to 212°F (-100° to 100°C): ±(0.3% of Reading + 7.2°F [4°C])*						
		Above 212°F (100°C): ±(0.2% of Reading + 5.4°F [3°C])*					Above 212°F (100°C): ±(0.2% of Reading + 14°F [8°C])*	
<b>Maximum Input</b>	25 mA <sub>DC</sub>	1 V						
<b>Input Impedance</b>	49 Ω	800 KΩ						
<b>Power Source</b>	Internal: Two 1.5 V AA non-rechargeable batteries External: USB 2.0 (computer or other power source, when powered by the USB the battery is automatically disconnected)							
<b>Power Consumption</b>	Internal power: 1 mA (average) / External power: 100 mW							

\*Accuracy is specified with the 10-point filter selected to reduce noise.

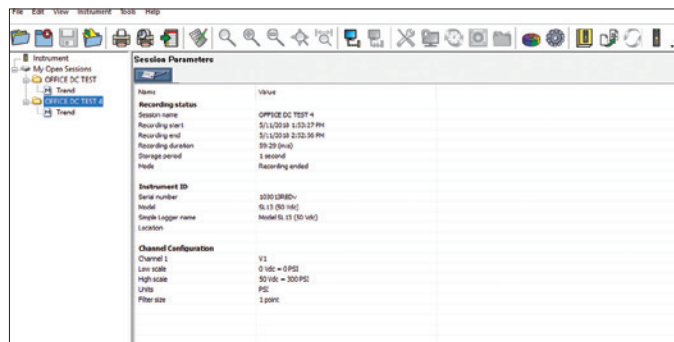
# DATA LOGGERS

## SIMPLE LOGGER® DATA LOGGERS

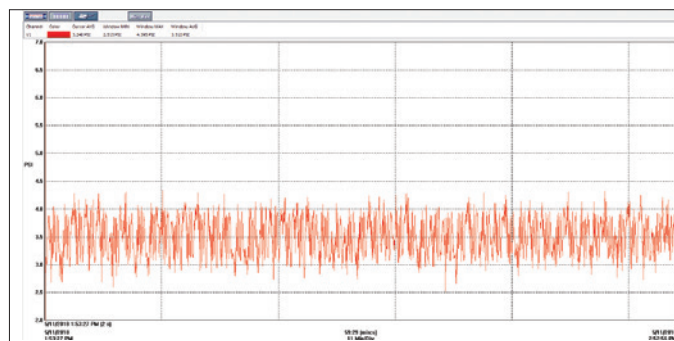
### SIMPLE LOGGER CONTROL PANEL

The Simple Logger Control Panel allows you to configure how data measured by these instruments is recorded and displayed. The available settings depend on which model is connected to the computer. The following table shows which configuration options are available for each model.

FEATURE	SL01	SL10	SL11	SL12	SL13	SL20	SL50
Set up recording	✓	✓	✓	✓	✓	✓	✓
Define units	✓	✓	✓	✓	✓	✓	✓
Set instrument clock	✓	✓	✓	✓	✓	✓	✓
Erase instrument memory	✓	✓	✓	✓	✓	✓	✓
Scaling	✓	✓	✓	✓	✓	✓	
Filtering	✓	✓	✓	✓	✓	✓	✓
Thermocouple type							✓
Cold Junction Compensation							✓
Rising/Falling events							



Shows the current configuration of the logger



Typical real-time trend graph

CATALOG NO.	DESCRIPTION
2156.01	Simple Logger® Model SL01 (Low Voltage, 5 VAC)
2156.10	Simple Logger® Model SL10 (Voltage, 100mVDC)
2156.11	Simple Logger® Model SL11 (Voltage, 1 VDC)
2156.12	Simple Logger® Model SL12 (Voltage, 10 VDC)
2156.13	Simple Logger® Model SL13 (Voltage, 50 VDC)
2156.20	Simple Logger® Model SL20 (Current, 4 to 20 mAac)
2156.50	Simple Logger® Model SL50 (Temperature, Thermocouple)