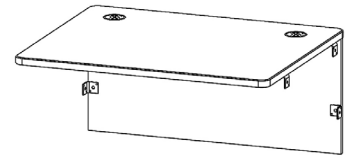


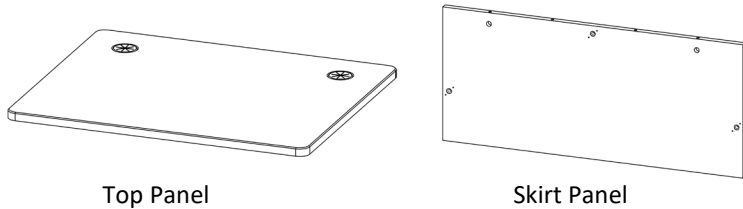
## 5104TP Bridge Top and Skirt for PD51 Series

This document shows assembly and installation of the 5104TP Bridge top. It links PD51 Series components together and it is adaptable to left or right-hand applications. **Note: If you cannot understand these instructions or are concerned about safety of the installation contact a qualified contractor or contact AVFI at 1-877-834-3876**



5104TP 36.5" Bridge Top

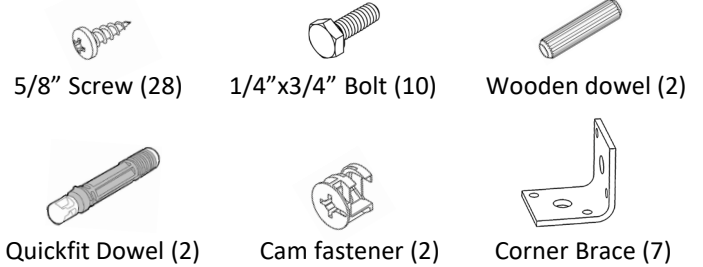
### Supplied Parts



Top Panel

Skirt Panel

### Supplied Hardware



5/8" Screw (28)

1/4"x3/4" Bolt (10)

Wooden dowel (2)

Quickfit Dowel (2)

Cam fastener (2)

Corner Brace (7)

### Tools required



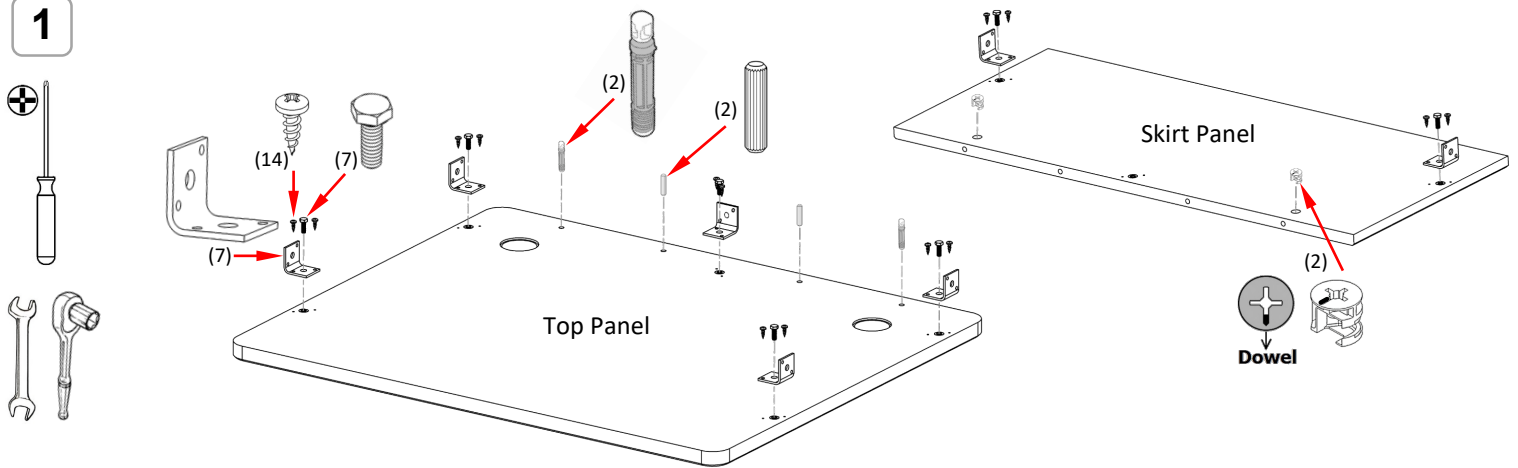
Phillips screwdriver

7/6" (11mm) Wrench or Socket

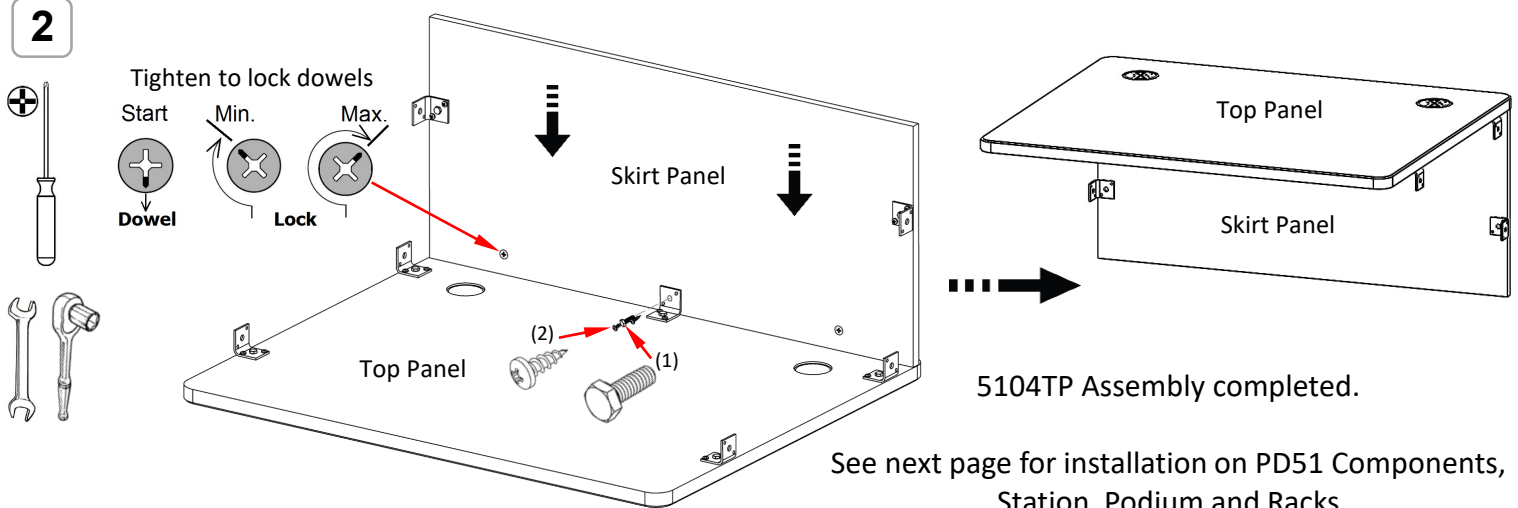
Power Drill

5/16" (8mm) drill bit

1



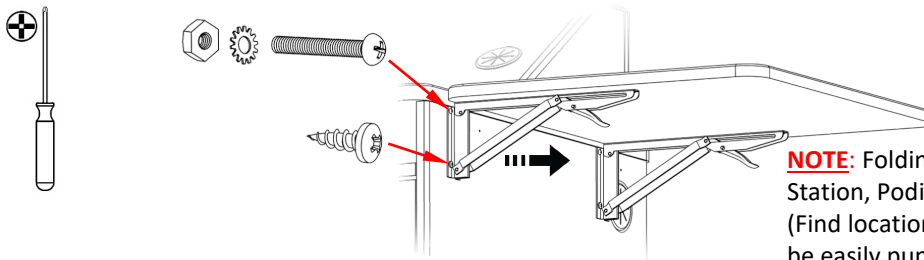
2



See next page for installation on PD51 Components, Station, Podium and Racks

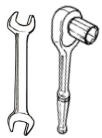
## 5104TP Bridge Top and Skirt for PD51 Series

- 3** Depending on application or configuration, folding side shelf might need to be dismantled from PD51 Station or PD5103 Podium by removing screws as shown below.



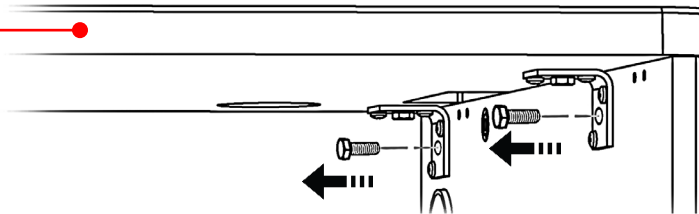
**NOTE:** Folding side shelf can be remounted on either side of the Station, Podium or Rack component.  
(Find location holes covered by the thermowrap film, this film can be easily puncture with a screwdriver to allow screw go through)

- 4** Once it's determined on which side of the component the 5104TP will be installed on, remove only the 2 bolts that hold the corner brace from the side panels. *These bolts will be used to attached the 5104TP Bridge Top in step 6.*

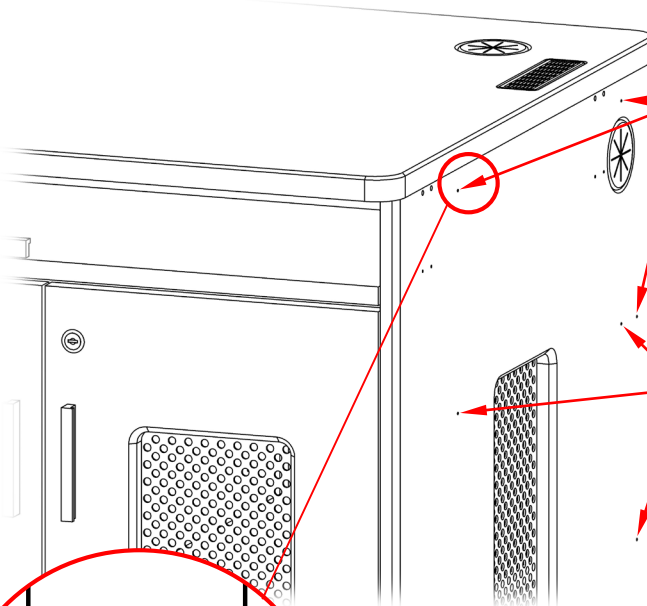
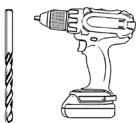


**This component can be:**

- PD51 Station
- PD5103 Podium
- RK5105 Mobile Rack
- RK5106 Mobile Rack

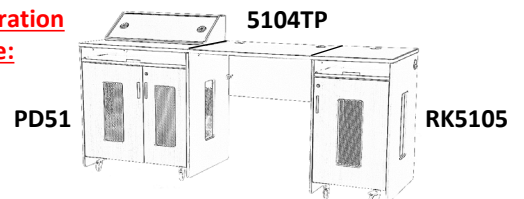


- 5** Depending on desired height and configuration, locate the three required 2.5mm pilot holes covered by thermowrap film shown below. *(These holes are available on both sides of the PD51 Station, PD5103 Podium and RK5105/RK5106 Mobile Racks).*



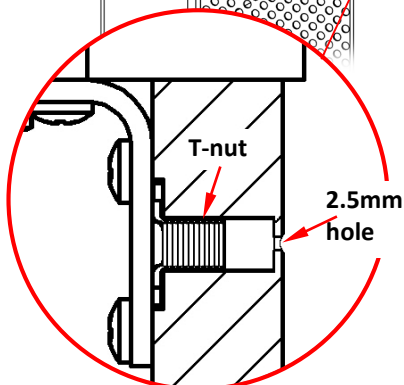
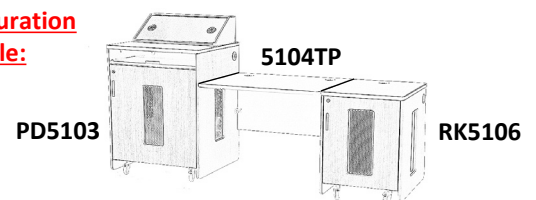
39" Height work surface  
(Leveled to PD51, PD5103 & RK5105 work surface)

**Configuration Example:**



30" Desk height work surface  
(Leveled to RK5106 work surface)

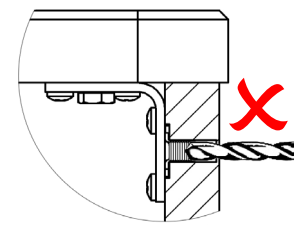
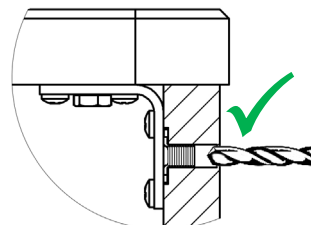
**Configuration Example:**



Drill using a 5/16" (8mm) bit just far enough to allow the 1/4" bolt go through and catch the T-nut.

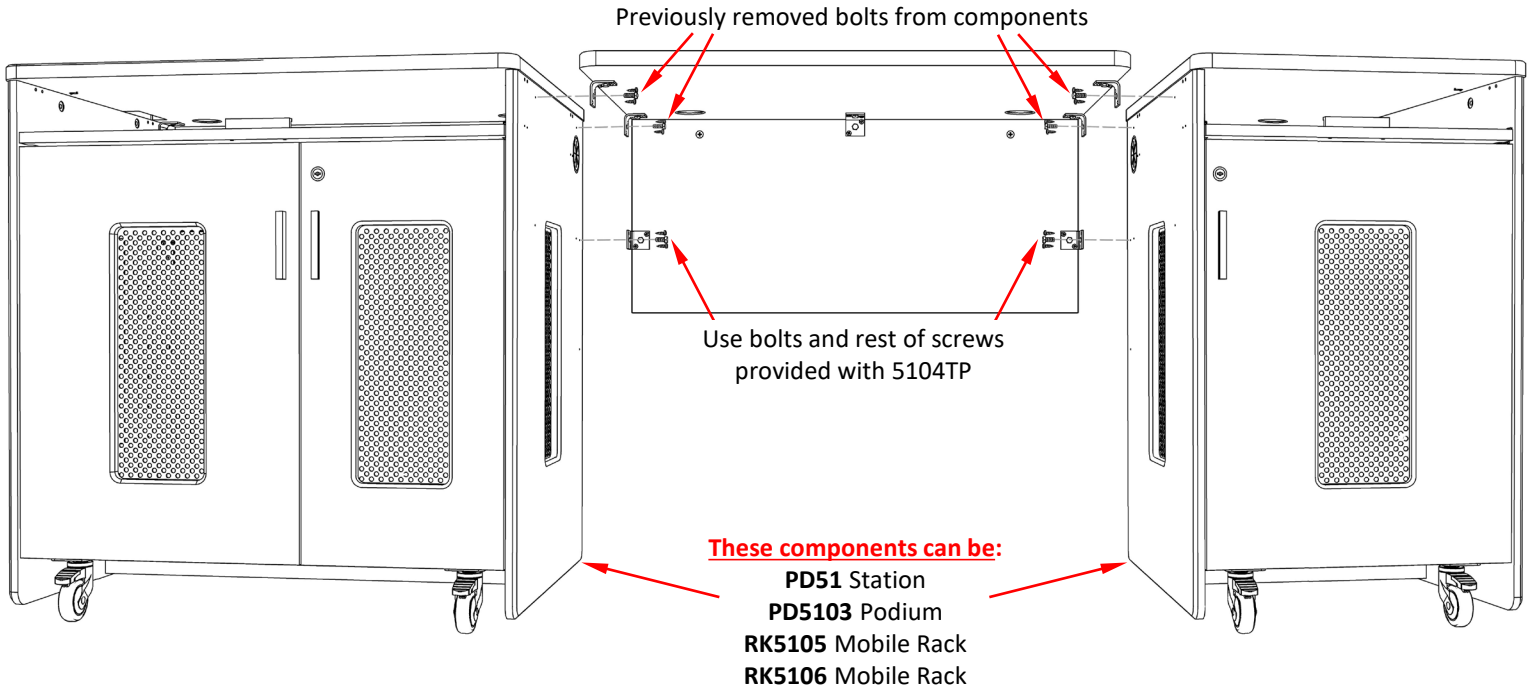


Do not drill more than 1/8" (3mm) deep to avoid damaging the T-nut



### 5104TP Bridge Top and Skirt for PD51 Series

**6** Use bolts previously removed from component during step 4 to attach the 5104TP Bridge Top.



**Assembly is complete, enjoy!**

**NOTE:**

It is possible to link two or more components together by using a 1/4-20 x2" Bolt (Not provided) as shown below. It requires removing the bolts in step 4 from both components to allow 2" bolt pass through.

