



Image shown with option items.
See configuration pages for more options.

Introducing a modern and stylish Modular Seating System as part of the AVFI product family.

Only a few simple components to create endless seating possibilities with comfort. Components can be changed, switched, inverted or rearranged to discover new configurations.

Add tables to expand space with available wired or wireless power charging panels for devices.

This Modular Seating is an ideal solution for audience collaboration, educational, breakout areas, public and hospitality environments.

SEATING COMPONENTS



MS223SW Seat Wedge
30"W x 28"D x 17½"H



MS223IB Inside Back
30"W x 7"D x 14"H



MS223OB Outside Back
20"W x 7"D x 14"H

Note: Back Cushions include hardware to attach to seat.

Standard Features

- Seating: CNC cut joint plywood frame, medium density foam and regular stitching on seams. Seat includes ganging connectors.
- Tables: Highly resistant thermowrap top surface [surf\(x\)](#) (Check available finishes). (End Table includes ganging connectors).
- Silver Powder coat steel legs and brackets.

Options

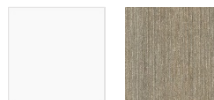
- **CUB4B** Black power panel. ▪ **CUB4S** Silver power panel (End Table only). (Specify desired color when ordering).
- **PB** Six outlet power bar with 10ft. cord
- **CHGQiW** Wireless Charging Station White (End Table only).
- **CHGQi-DNGL** Dongle Lightning, 30 pin, USB (requires **CHGQiW**).

Available Fabrics



TABLE COMPONENTS

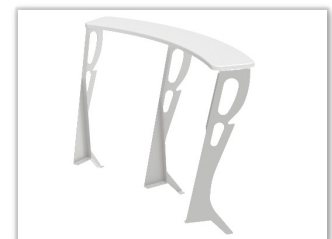
Available Table Top Finish



MS215ET End Table Wedge
18½"W x 26½"D x 16¼"H



MS242CT Coffee Table
42"W x 36"D x 17"H



MS245IT Inside Standing Table
66"W x 10"D x 40½"H

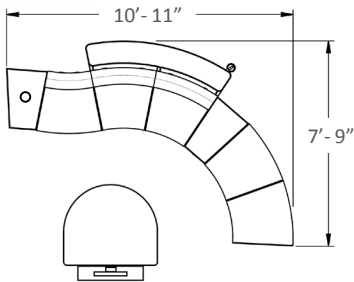
MS200 Modular Seating System

COLLABORATIVE & LOUNGE TYPICAL CONFIGURATIONS

MS200-01 SET



*Monitor not included

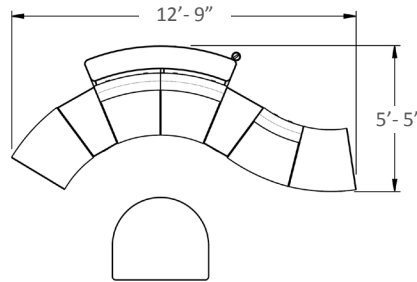


Standard Components Included:

5x MS223SW, 2x MS223IB, 1x MS223OB, 2x MS215ET, 1x MS242CT, 1x MS245IT, 1x CHLD245 Cup Holder, 1x SYZ42 Mobile Stand, 2x CUB4 Power Panel, 1x CHGQIW Wireless Charging, 1x CHGQI-DNGL Dongle Lightning, 30 pin, USB.

Specify when ordering: CUB4 color, Fabric and Tables Finish.

MS200-02 SET



Standard Components Included:

5x MS223SW, 2x MS223IB, 1x MS223OB, 2x MS215ET, 1x MS242CT, 1x MS245IT, 1x CHLD245 Cup Holder, 2x CUB4 Power Panel.

Specify when ordering: CUB4 color, Fabric and Tables Finish.

AVAILABLE COMPONENTS



MS223SW Seat Wedge
30"W x 28"D x 17½"H



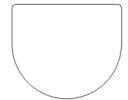
MS223IB Inside Back
30"W x 7"D x 14"H



MS223OB Outside Back
20"W x 7"D x 14"H



MS215ET End Table Wedge
18½"W x 26½"D x 16¼"H

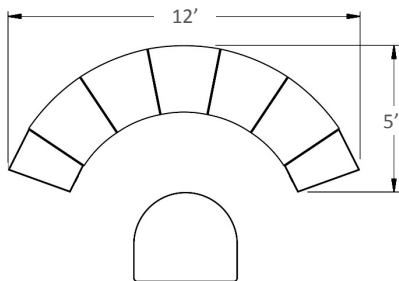


MS242CT Coffee Table
42"W x 36"D x 17"H



MS245IT Inside Standing Table
66½"W x 10"D x 40½"H

MS200-03 SET

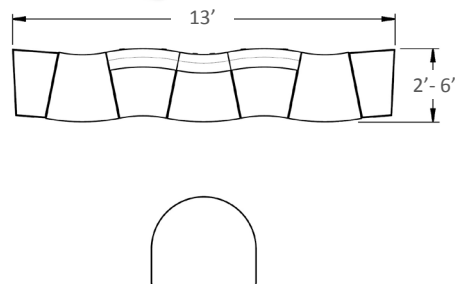


Standard Components Included:

5x MS223SW, 2x MS215ET, 1x MS242CT, 2x CUB4 Power Panel.

Specify when ordering: CUB4 color, Fabric and Tables Finish.

MS200-04 SET



Standard Components Included:

5x MS223SW, 2x MS223IB, 1x MS223OB, 2x MS215ET, 1x MS242CT, 2x CUB4 Power Panel.

Specify when ordering: CUB4 color, Fabric and Tables Finish.

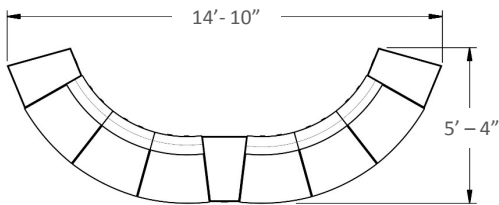
Note: Allow ± 1" on all dimensions

The information contained in this drawing is the sole property of Audio Visual Furniture International. Any reproduction in part or as a whole without the written permission of Audio Visual Furniture International is prohibited. We can build or modify stock configurations to suit customer specifications. Please contact us to discuss how this service can help meet your needs. Some quantity restrictions may apply. Specification subject to change without notice. Computers, cameras, monitors, etc. are shown to illustrate product usage and are not included unless otherwise noted.

MS200 Modular Seating System

COLLABORATIVE & LOUNGE TYPICAL CONFIGURATIONS

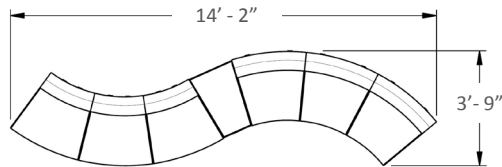
MS200-05 SET



Standard Components Included:
6x MS223SW, 6x MS223OB, 3x MS215ET, 3x CUB4 Power Panel.

Specify when ordering: CUB4 color, Fabric and Tables Finish

MS200-06 SET



Standard Components Included:
6x MS223SW, 3x MS223IB, 3x MS223OB, 1x MS215ET,
1x CUB4 Power Panel.

Specify when ordering: CUB4 color, Fabric and Tables Finish.

AVAILABLE COMPONENTS



MS223SW Seat Wedge
30"W x 28"D x 17½"H



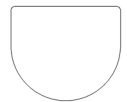
MS223IB Inside Back
30"W x 7"D x 14"H



MS223OB Outside Back
20"W x 7"D x 14"H



MS215ET End Table Wedge
18½"W x 26½"D x 16¼"H

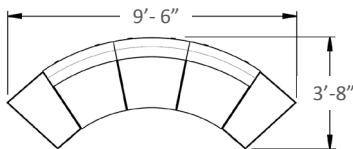


MS242CT Coffee Table
42"W x 36"D x 17"H



MS245IT Inside Standing Table
66½"W x 10"D x 40½"H

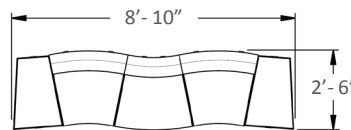
MS200-07 SET



Standard Components Included:
3x MS223SW, 3x MS223IB, 2x MS215ET, 2x CUB4 Power Panel.

Specify when ordering: CUB4 color, Fabric and Tables Finish.

MS200-08 SET



Standard Components Included:
3x MS223SW, 2x MS223IB, 1x MS223OB, 2x MS215ET,
2-CUB4 Power Panel.

Specify when ordering: CUB4 color, Fabric and Tables Finish

Note: Allow ± 1" on all dimensions

The information contained in this drawing is the sole property of Audio Visual Furniture International. Any reproduction in part or as a whole without the written permission of Audio Visual Furniture International is prohibited. We can build or modify stock configurations to suit customer specifications. Please contact us to discuss how this service can help meet your needs. Some quantity restrictions may apply. Specification subject to change without notice. Computers, cameras, monitors, etc. are shown to illustrate product usage and are not included unless otherwise noted.