

**SYZ42-W/B Mobile Display Stand**



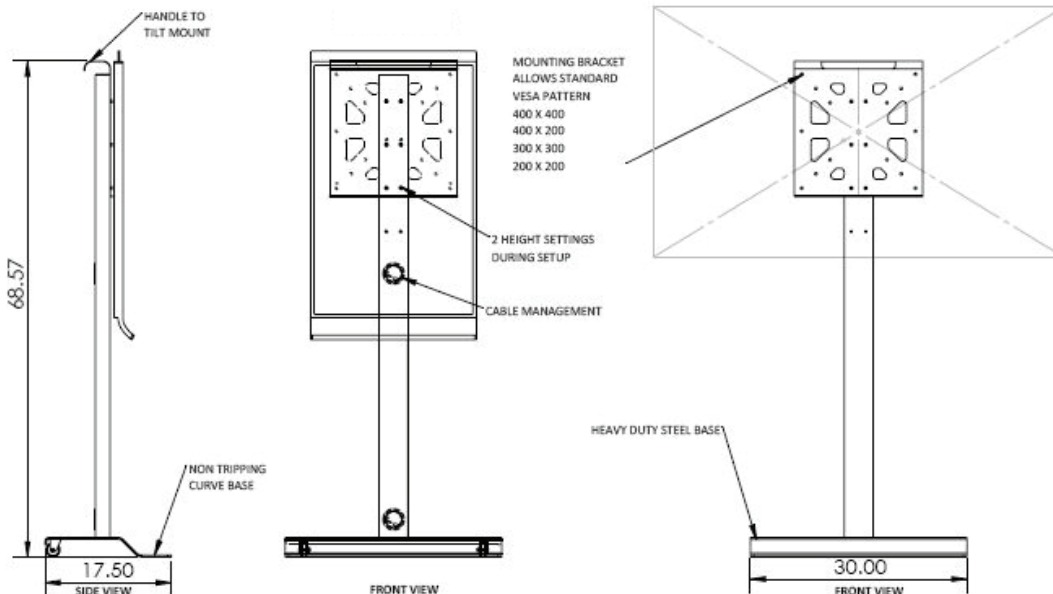
The **SYZ42-W/B** mobile stand with modern ball-bearing wheels that allow this unit to be tilted and rolled from location to location. The column has grommets both in the top and bottom for passing cables inside the unit, leaving it with a very clean controlled appearance. Base front is flush to the ground providing the user with free movement in touch screen applications without fear of tripping over legs or casters. This unit is available in white or black metal and weighs 67 lbs.

**Standard Features**

- Accommodates 42"- 60" displays up to 75 lbs, and \*SMART kapp 42® whiteboard
- 2 height settings
- Cable passage in spine
- Heavy duty steel weighted base
- Rolls on 2 rear wheels
- Handle to tilt mount
- Accessible base shape
- For portrait setup VESA pattern must be centered
- Vesa pattern 200, 300, 400, 400/200
- Unit weighs 67 lbs

**Options**

- **BKT-SX20** SX20 Codec bracket
- **PM-HDCB** HD Codec bracket
- **PM-RP-BKT** RealPresence® Group 300 & 500 Codec Bracket
- **BKT-MCM** Mac mini bracket
- **SYZ1** Laptop shelf
- **PB** Six outlet power bar with 10 ft. cord



**Specifications**

**Model:** SYZ42-W/B  
**Width:** 30"  
**Depth:** 17.50"  
**Height:** 70"  
**Finish:** White (W) or Black (B)

The information contained in this drawing is the sole property of Audio Visual Furniture International. Any reproduction in part or as a whole without the written permission of Audio Visual Furniture International is prohibited. We can build or modify stock configurations to suit customer specifications. Please contact us to discuss how this service can help meet your needs. Some quantity restrictions may apply. Specification subject to change without notice. Computers, cameras, monitors, etc. are shown to illustrate product usage and are not included unless otherwise noted. \*SMART kapp 42® is a trademark or registered trademark of SMART Technologies ULC in the U.S. and/or other countries. Not verified by SMART.