

Logitech Tap Cradle

Bring easy access and safe storage for the Logitech Tap meeting controller with Avteq's Logitech Tap Cradle. The cradle is designed for the ELT-2000 floor stand and ELT-2100 mobile cart and easily is mounted on the front panel.

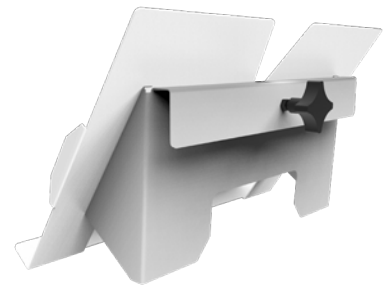
The Logitech Tap Cradle slides over the front edge of the ELT-2000 or ELT-2100 and locks in place using the knob at the back of the cradle.

FEATURES

- Designed for the ELT-2000 floor stand and ELT-2100 mobile cart
- Mounting hardware included
- Grey powder coat finish
- 100% steel
- TAA compliant



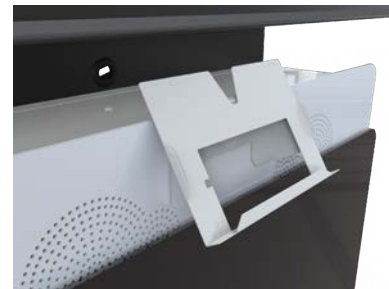
LTAP-MNTKIT



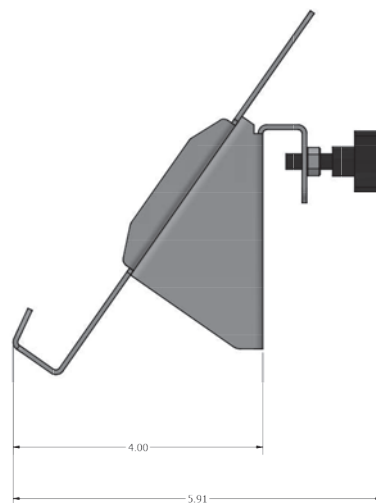
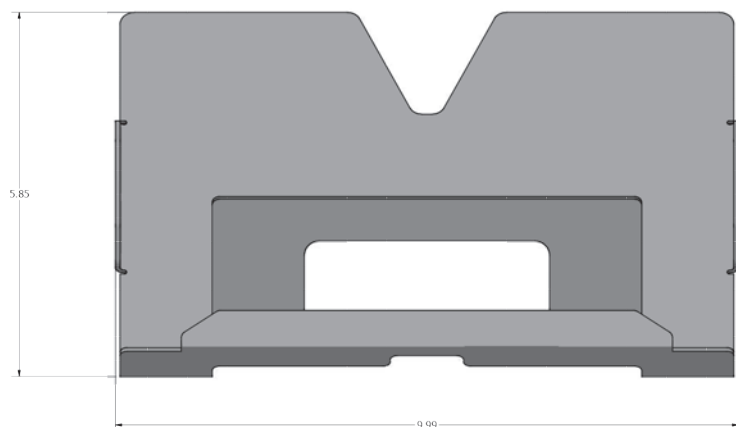
LTAP-MNTKIT review view



ELT-2100 with LTAP-MNTKIT



SPECIFICATIONS



DIMENSIONS

DESCRIPTION	DIMENSIONS (INCHES)	PART NUMBER
Logitech Tap Cradle	9.99W x 5.85H x 4D	LTAP-MNTKIT



Call 800.285.8315 or visit AVTEQ.net