

INSTRUCTION SHEET

Aaronia-Shield®-Canopies

ATTENTION!

Before installation it is essential to measure the height and the width of the canopy because all canopys are handmade and manufacturing variations are possible!

SCOPE OF DELIVERY

1 canopy, 1 shielding mat (if ordered), 1 manual, 2 rope-fixture sets (rectangular canopy only), 1 grounding kit

INSTALLATION OF THE SHIELDING MAT

Place the shielding mat (made of Aaronia X-Dream®) on the floor of the bedroom under the bed. Please avoid any damage of the mat by the bedposts. We therefore recommend to put small cork or wooden plates under each bedpost. The mat has to endure on all side in order to ensure a complete shielding. Grounding the mat should be done by connecting the alligator crimps of the cable to the shielding mat. The other cable end should be fixed either to the Heating or to a grounded power socket. Please arrange the cable that you not have the risk of strumbling afterwards.

INSTALLATION OF THE PYRAMID CANOPY

Pyramid canopies come with 2 spreaders (stained glass rods). Knot 4 times every thread eye of the spreaderbar along with every hanger of the canopys bed head. The outcome of this is a cross. Now knot in the intersection point of the spreader bar cross the assembly tape. The height of the canopy is now individually movable with the assembly tape. Finally it's easy to install the canopy with dowel and clamp centered on the ceil over the bed.

INSTALLATION OF THE RECTANGULAR CANOPY:

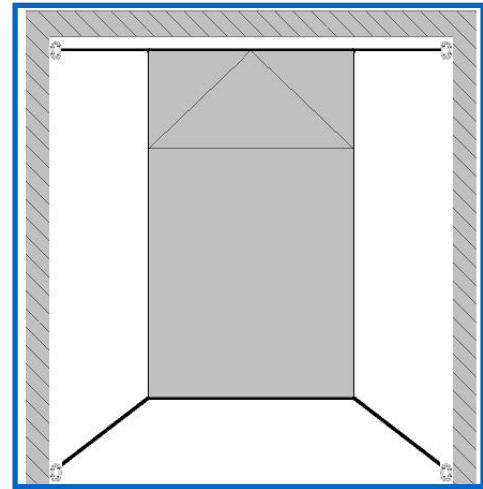
1. Caution: The stainless steel ropes have a length of 5m. If your bedroom is wider than 5m you have to use longer ropes. You can buy those ropes f.e. in a building center.
2. To achieve a perfect shielding, the canopy always has to be contacted to the shielding mat round and round. The area where the Aaronia Shield® shielding-tissue overlies should be at least 10 cm (drapery). Therefore you should hang up the canopy 10 cm lower then it's installation height is...



INSTRUCTION SHEET

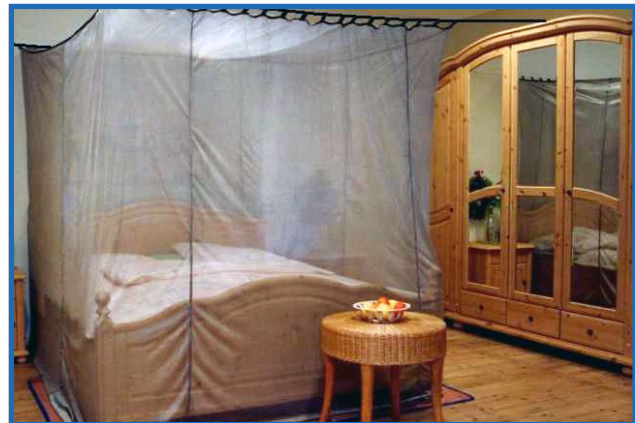
Aaronia-Shield®-Canopies

3. The 4 wall clamps should be fixed with a height of around 2.20m. Please take the installation of the dowels, clamps and tethers from the instruction on the package of the respective installation sets. Please note necessarily not to cut off the tethers to short. Otherwise prolongation is not possible. If there is no mounting possibility on the walls, it's also possible to hang of the canopy from the ceil. For this you can pull f.e. wooden bars through the thread eyes of the canopy. Then the wooden bars should be fixed on clamps on the ceil. But it is always a little more wide than the canopy self (see graphic). Thereby the canopy get strained and won't sag. The bed head of the canopy should be (as indicated in the graphic) placed flush to the bed. The offset should only be effected on the foot (see graphic). In practice, at a room width of 5m an allowance of 50cm is approved, at 4m an allowance of 40cm and at 3m an allowance of 30cm.



4. The installation should start at the bed head by drawing the cable rope through the thread eyes of the canopy. Now start slowly to strain the rope until the ropes is energized and don't sag.

5. Now do the same with the tether on the foot. Correctly built the canopy should have a cake tin (see graphic). Please take care that around the bed there is always enough tissue wich overlies, otherwise you have to hang the canopy lower. Caution: Please read the enclosed care- and safety instructions.



CAUTION!

In order to be able to check the screening efficiency it is vital that you use a high-quality measuring instrument! It is the only way to judge the efficiency of the screening and to detect gaps or faulty earthing. We recommend you use a "Aaronia NF-Spectrum Analyzer" for LF fields and our "Aaronia HF-Spectrum Analyzer" for RF fields. In order to assess both we recommend our "Pro-Bundle".

